

# MNWR<sup>TM</sup>

MORBIDITY AND MORTALITY WEEKLY REPORT

- 81 Surveillance for Injuries and Illnesses and Rapid Health-Needs Assessment Following Hurricanes Marilyn and Opal, September–October 1995
- 85 Occupational Blood Lead Survey — Armenia, 1991 and 1993
- 89 Progress Toward Elimination of Neonatal Tetanus — Egypt, 1988–1994
- 92 Notices to Readers
- 99 Monthly Immunization Table

## **Surveillance for Injuries and Illnesses and Rapid Health-Needs Assessment Following Hurricanes Marilyn and Opal, September–October 1995**

Hurricanes rated a category three or greater (on a scale of one to five) strike the United States or its territories approximately once every 1.5 years (1). In 1995, both a category two and category three hurricane struck the United States within 18 days, causing approximately 40 deaths (2). This report summarizes the surveillance for injuries and illnesses and a rapid health-needs assessment conducted after the storms.

### **MORBIDITY SURVEILLANCE**

#### **Hurricane Marilyn, September 1995**

During September 15–16, Hurricane Marilyn struck the U.S. Virgin Islands (USVI), passing over St. Croix (1990 population: 50,139) on September 15, with sustained winds of 80 mph, and over St. Thomas (1990 population: 48,166) on September 15–16, with sustained winds of 100 mph and gusts of 125 mph. On St. Thomas, 92% of houses were damaged (habitable) or destroyed (uninhabitable); on St. Croix and St. John (1990 population: 3504), 71% and 76%, respectively, of housing units were affected.

On September 16, the USVI Department of Social and Health Services, in collaboration with CDC and the Preventive Medicine Task Force of the Public Health Service National Disaster Medical System, initiated public health surveillance to 1) maintain daily contact with primary health-care facilities, including deployed Disaster Medical Assistance Teams (DMATs); 2) characterize adverse health events during the early post-hurricane phase; 3) coordinate disease outbreak investigations; 4) provide reliable information to health planners for determining priorities; and 5) recommend public health interventions.

Because of the disruption of health-care systems, active posthurricane surveillance was initiated on St. Thomas. Independent surveillance systems were established on each of the three islands. Daily patient summaries were obtained from the Governor Juan F. Luis Hospital and Medical Center, three outpatient treatment clinics, two smaller clinic sites that provided summary information only, and DMATs deployed to provide supplemental health care. Patient logs were abstracted into 20 diagnostic surveillance categories.

*Hurricanes Marilyn and Opal — Continued*

During September 16–30, a total of 3265 patient visits were recorded at the four primary medical treatment sites (i.e., the hospital and three DMAT sites). Of the 3265 visits, 1084 (33%) were storm-associated injuries involving minor wounds (i.e., abrasions, lacerations, punctures, and foreign-body removal) or trauma to the musculoskeletal system (i.e., fractures, sprains, strains, and dislocations). In addition, eight persons sustained burns while operating or refueling portable power generators. Other problems reported included upper and lower respiratory tract illnesses (383 [12%]) (e.g., sore throat, cough, pneumonia, and asthma) and dermatologic disorders (199 [6%]) (e.g., rashes, sores, and infections). Of the 167 visits for gastrointestinal disorders, 77 were for diarrheal illness (2.4% of total patient visits). The second largest category of visits (23.5%) was grouped as miscellaneous and was for problems unrelated to the storm (e.g., blood pressure and blood glucose screening, prescription refills, vaccinations, and other health-care services).

**Hurricane Opal, October 1995**

On October 4, Hurricane Opal made landfall at Navarre, Florida, approximately 20 miles east of Pensacola, with sustained winds of 115 mph. The storm caused extensive damage along the 100 miles of coastline from Navarre east to Mexico Beach. Efforts to evaluate the impact of the hurricane on the health of residents in the affected area included review of records of emergency department (ED) visits to the two hospitals serving one of the most severely affected counties. The frequencies of 20 conditions were determined for the 6 days after the hurricane (i.e., posthurricane) (October 4–9) and were compared with those observed for the 6 days before the storm (i.e., prehurricane) (September 27–October 3) (Table 1).

EDs treated 996 patients during the prehurricane period and 1135 during the posthurricane period. For both periods, the proportion of ED visits were similar for lacerations, puncture wounds, musculoskeletal injuries, rashes, and gastrointestinal or respiratory illnesses. During the posthurricane period, the proportion of visits for in-

**TABLE 1. Number and percentage of persons reporting injuries or illnesses before and after Hurricane Opal, by condition and phase of hurricane — Bay County, Florida, October 1995**

| Condition                    | Prehurricane*<br>(n=996) |       | Posthurricane†<br>(n=1135) |       |
|------------------------------|--------------------------|-------|----------------------------|-------|
|                              | No.                      | (%)   | No.                        | (%)   |
| <b>Injury</b>                |                          |       |                            |       |
| Laceration/wound             | 80                       | (8.0) | 70                         | (6.2) |
| Sprain/strain/fracture       | 79                       | (7.9) | 77                         | (6.8) |
| Motor-vehicle-related injury | 37                       | (3.7) | 18                         | (1.6) |
| Insect bite                  | 2                        | (0.2) | 19                         | (1.7) |
| Other                        | 38                       | (3.8) | 23                         | (2.0) |
| <b>Illness</b>               |                          |       |                            |       |
| Gastrointestinal             | 44                       | (4.4) | 45                         | (4.0) |
| Respiratory                  | 3                        | (0.3) | 11                         | (1.0) |
| Skin rash                    | 19                       | (1.9) | 14                         | (1.2) |
| Psychiatric symptoms         | 18                       | (1.8) | 5                          | (0.4) |

\*During the 6 days before the hurricane struck land.

†During the 6 days after the hurricane struck land.

*Hurricanes Marilyn and Opal — Continued*

sect bites increased from 0.2% to 1.7% ( $p<0.05$ ). These findings were shared with local health officials and emergency management officials coordinating disaster relief.

**HEALTH NEEDS ASSESSMENT**

Population-based surveys were conducted on St. Thomas on September 23, 1 week after Hurricane Marilyn. Based on maps and population data, the island was divided into four population zones, which then were subdivided into clusters. In each of the 30 clusters, a survey team interviewed an adult member of selected households. Respondents were asked about the number and age of residents, number of sick and injured persons, supply of food and water, water purification and access to sanitary toilets, extent of damage to housing, access to telephone and electricity, availability of transportation, and monitoring of local radio broadcasts. One week after the initial survey, the process was repeated. A similar clustering technique was used on St. Croix and St. John and on the Florida panhandle following Hurricane Opal.

For Hurricane Marilyn, most (93%–99%) respondents reported having drinking water that had been purified, access to a motor vehicle (77%–89%), and having listened to a local radio station (79%–99%) (Table 2). For Hurricane Opal, most persons reported having access to electricity (89%), running water (96%), medical care (91%), and transportation (99%).

*Reported by: N George-McDowell, MD, AB Hendry, LB SewerBridges-Williams, MSW, K Nickel, St. Thomas; J Heyliger, N Michael, PhD, St. Croix; A Wade, St. John, US Virgin Islands. J Stringer, C Reedy, Winston-Salem, North Carolina; L McDaniel, Pensacola, Florida; C Budd, Toledo, Ohio; A Wallace, MD, T Walton, Tulsa, Oklahoma; D McClure, C Perry, Ft. Thomas, Kentucky; L Patton, Fort Wayne, Indiana; S Briggs, MD, Boston, Massachusetts; K Yeskey, MD, Rockville/Bethesda, Maryland; L Stringer, MD, Disaster Medical Assistance Teams, Emergency Support Function No. 8. M Moore, Bay Medical Center, D Abbot, HCA Gulf Coast Medical Center,*

**TABLE 2. Percentage of persons reporting selected conditions following Hurricane Marilyn, by condition and island\* — U.S. Virgin Islands, September 1995<sup>†</sup>**

| Condition                                      | St. Thomas<br>(Sept. 23) | St. Thomas<br>(Sept. 30) | St. Croix       | St. John |
|--|--------------------------|--------------------------|-----------------|----------|
| Housing unit completely destroyed              | 11%                      | 14%                      | 2%              | 11%      |
| Housing unit damaged but inhabitable           | 67%                      | 78%                      | 69%             | 65%      |
| Ill person in household                        | 5%                       | 10%                      | 14%             | 19%      |
| Injured person in household                    | 2%                       | 4%                       | 3%              | 9%       |
| Person lacking prescription drugs in household | 3%                       | 6%                       | 3%              | 27%      |
| Purifying drinking water                       | 99%                      | 99%                      | 99%             | 93%      |
| Symptoms of psychologic stress                 | 12%                      | 60%                      | 25%             | 42%      |
| Access to a flushing toilet                    | 99%                      | 99%                      | 98%             | 99%      |
| Listening to a local radio station             | 98%                      | 99%                      | 79%             | 79%      |
| Working telephone (including cellular)         | 12%                      | 9%                       | 54%             | 24%      |
| Access to electrical power                     | 52%                      | 65%                      | NA <sup>§</sup> | 45%      |
| Working motor vehicle                          | 86%                      | 89%                      | 77%             | 79%      |

\*Surveys were conducted on St. Thomas on September 23 and 30, on St. Croix on September 28, and on St. John during September 26–28.

<sup>†</sup>Because of the hurricane, modification of the sampling frame precluded usual variance estimates.

<sup>§</sup>Not available.

*Hurricanes Marilyn and Opal — Continued*

*M Pettis, District 2, P Sylvester, MD, Bay County Health Dept, Panama City, Florida; G Hlady, MD, R Hopkins, MD, State Epidemiologist, Florida Dept of Health and Rehabilitative Svcs. S Bright, K Lawton, Office of Disaster Medical Svc, Dept of Veterans Affairs. F Young, MD, National Disaster Medical System, Office of Emergency Preparedness, Public Health Svc. Special Pathogens Br, Div of Viral and Rickettsial Diseases, National Center for Infectious Diseases; Program Operations Br, National Immunization Program; Div of Reproductive Health, National Center for Chronic Disease Prevention and Health Promotion; Div of Birth Defects and Developmental Disabilities, and Emergency Response Coordination Group, Disaster Assessment and Epidemiology Section, Health Studies Br, Div of Environmental Hazards and Health Effects, National Center for Environmental Health; Div of Field Epidemiology, Epidemiology Program Office, CDC.*

**Editorial Note:** Rapid assessment of health needs in populations affected by disasters is an important first step in guiding relief efforts (3). The cluster sampling survey method used for hurricanes Marilyn and Opal were based on methods used after Hurricane Andrew in 1992 (4) and provided some of the earliest objective data describing the status of affected populations after the storm. Similarly, after hurricanes Marilyn and Opal, the rapid collection of morbidity data from permanent and temporary facilities provided timely and reliable data for assessing the health impact of the disasters.

Increased frequencies of injuries such as those observed after Hurricane Marilyn and illnesses such as skin rashes and heat stress have been documented after recent storms (5–7). Most of the injuries reported after Hurricane Marilyn were associated with clean-up and restoration activities, including several burns associated with the use of portable gasoline generators. These findings underscore the need for public awareness campaigns that address the risks related to specific activities, including the use and maintenance of emergency power sources and general safety precautions in the immediate recovery phase.

The objective estimates from the surveys of health needs and from morbidity surveillance enabled conservation of medical and monetary resources. For example, based on survey findings, officials in the USVI decided not to provide door-to-door community outreach health care because a high proportion of the affected population had access to relief information through radio reports and transportation to a central relief location. In addition, following both storms, expensive interventions (e.g., mass aerial spraying for disease vectors and nuisance insects) were determined to be unnecessary.

Scientifically valid information is critical to enable decision making and resource prioritization by health-care providers and emergency management officials during the immediate response phase following disasters. To enhance surveillance in disaster settings, relief officials should 1) refine the statistical methods for estimating the size of affected populations; 2) ensure the availability of trained surveillance workers; 3) establish standardized assessment instruments—including computerized interviewing instruments—and use wireless communications technologies; and 4) modify surveillance data collection to indicate whether an illness or injury was “disaster related.”

*References*

1. Herbert P, Taylor G, Case R. Hurricane experience levels of coastal county population—Texas to Maine. Miami: US Department of Commerce, National Oceanographic and Atmospheric Administration, 1984. (Technical memorandum no. NWS NHC 25).
2. CDC. Deaths associated with hurricanes Marilyn and Opal—United States, September–October 1995. *MMWR* 1996;45:32–8.

*Hurricanes Marilyn and Opal — Continued*

3. Lillibridge S, Noji E, Burkle F. Disaster assessment: the emergency health evaluation of a population affected by a disaster. *Ann Emerg Med* 1993;22:1715–20.
4. CDC. Rapid health needs assessment following Hurricane Andrew—Florida and Louisiana, 1992. *MMWR* 1992;41:685–8.
5. CDC. Injuries and illnesses related to Hurricane Andrew—Louisiana, 1992. *MMWR* 1993;42:242–3,249–51.
6. CDC. Work-related electrocutions associated with Hurricane Hugo—Puerto Rico. *MMWR* 1989;38:718–25.
7. Longmire AW, Ten Eyck RP. Morbidity of Hurricane Frederic. *Ann Emerg Med* 1984;13:334–8.

**Occupational Blood Lead Survey — Armenia, 1991 and 1993**

The risk for lead exposure and lead poisoning is a persistent problem for some workers (1) and is an important issue in both industrialized and developing countries (2). In Armenia, where lead is used widely in industry (3), the Armenian Engineers and Scientists of America, Inc. (AESA), and the United Armenian Fund (UAF)\* initiated a program in 1991 to use blood lead determinations to investigate lead exposures, identify industries and circumstances associated with lead hazards, and define specific jobs characterized by excessive exposures that increase the risk for lead poisoning of workers. In 1991, team investigators surveyed four factories that use lead; in 1993, one of the factories was resurveyed. Because the capacity of laboratories in Armenia to reliably determine blood lead levels (BLLs) is limited, blood specimens were transported to the United States for lead testing. This report presents the findings of both surveys and establishes the feasibility of sample collection at remote sites for transport to laboratories equipped and certified to process lead specimens.

The Armenian Institute of General Hygiene and Occupational Diseases in Yerevan selected four worksites for the initial survey in November 1991 based on factors including accessibility and operation.<sup>†</sup> Two sites were printing plants that used cast lead type ("printing plant A" in Yerevan and "printing plant B" in Hoktemberian); one was a research laboratory that periodically used lead compounds in toxicologic experiments ("research institute" in Yerevan); and the fourth was a lead crystal factory that used red lead oxide in the manufacture of decorative glassware ("crystal factory" in Arzni). Participation in the survey was offered to all workers in jobs believed to be at high risk for lead exposure and to some administrators considered not to have substantial exposure. Of the workers who were present on the respective survey days, approximately 75% volunteered and permitted whole blood samples to be obtained. Because extremely high exposures were identified in the crystal factory in 1991, the factory was resurveyed in September 1993. For the 1991 survey, 34 workers at printing plant A participated; 17 at printing plant B; 10 at the research institute; and 38 at the crystal factory. For the 1993 follow-up survey at the crystal factory, 19 workers participated, including 10 from the 1991 survey.

\*AESA is a nonprofit professional organization and UAF is a nonprofit service organization; both are headquartered in Glendale, California.

<sup>†</sup>The selection of survey sites was primarily dictated by time and external economic constraints; access to energy and raw materials for industry in Armenia had been restricted because of regional political circumstances, which resulted in frequent, unpredictable shutdowns of many factories. Study sites were factories in operation at times that coincided with the investigators' availability.

*Occupational Blood Lead Survey — Continued*

Blood specimens from workers were collected by venipuncture into lead-free, evacuated tubes containing sodium heparin anticoagulant, stored at cool room temperature, and transported within 7 days to an Occupational Safety and Health Administration (OSHA)-approved laboratory in the United States for lead determination by atomic absorption spectrophotometry (4). Analyses were completed within 7 days of sample collection. Wipe samples of surface dust were collected onto lead-free castile soap wipes from 1-sq-ft areas of floors and machinery surfaces (at breathing-zone heights) and from the hands of workers, then were transported to the United States for lead determination by atomic absorption spectrophotometry (5). Routine external and internal quality-control measures were applied for blood and environmental analyses.

In 1991, of the 51 workers surveyed at the two printing plants, 50 had BLLs <25 µg/dL; none exceeded 40 µg/dL (Table 1).<sup>§</sup> Among the 10 workers surveyed at the research institute, BLLs ranged from 2 µg/dL to 5 µg/dL. In both the 1991 and 1993 surveys at the glassworks, however, a substantial proportion of the 39 total specimens obtained from the production workers surveyed had elevated BLLs, and some were markedly elevated: 31 (79%) were ≥25 µg/dL, 19 (49%) were >40 µg/dL, and eight (21%) were >65 µg/dL; among administrative and office workers, BLLs as high as 22 µg/dL were recorded.

<sup>§</sup>The cutoff level of ≥25 µg/dL corresponds to the reporting level in many U.S. states (6), and 40 µg/dL corresponds to the return-to-work (following medical removal for elevated BLL) criterion in the OSHA general industry lead standard (7). An additional cutoff of 65 µg/dL was selected to exceed current permissible levels in the United States and as a level at which overt or clinically observable toxic effects of lead would be expected in adults with chronic occupational exposure.

**TABLE 1. Blood lead levels (BLLs)\* in workers, by facility — Armenia, 1991 and 1993**

| Survey/Facility          | No. workers | BLL (μg/dL) |         |       | Distribution of samples |       |       |
|--------------------------|-------------|-------------|---------|-------|-------------------------|-------|-------|
|                          |             | Mean        | (SD)    | Range | ≥25                     | >40   | >65   |
|                          |             |             |         |       | μg/dL                   | μg/dL | μg/dL |
| 1991 Survey              |             |             |         |       |                         |       |       |
| Printing plant A         | 34          | 14.5        | (± 6.2) | 4–31  | 1                       | 0     | 0     |
| Printing plant B         | 17          | 8.9         | (± 4.3) | 3–19  | 0                       | 0     | 0     |
| Research institute       | 10          | 3.4         | (± 1.2) | 2– 5  | 0                       | 0     | 0     |
| Crystal factory          |             |             |         |       |                         |       |       |
| Administration           | 13          | 11.1        | (± 4.7) | 4–22  | 0                       | 0     | 0     |
| Production               | 25          | 41.2        | (±19.7) | 15–89 | 20                      | 12    | 3     |
| 1993 Survey <sup>†</sup> |             |             |         |       |                         |       |       |
| Crystal factory          |             |             |         |       |                         |       |       |
| Administration           | 5           | 6.8         | (± 1.3) | 5– 8  | 0                       | 0     | 0     |
| Production               | 14          | 45.8        | (±23.2) | 8–82  | 11                      | 7     | 5     |

\*A BLL ≤9 µg/dL reflects low exposure in adults and is considered "normal." The cutoff level of ≥25 µg/dL corresponds to the reporting level in many states in the United States (6); >40 µg/dL corresponds to the return-to-work (following medical removal for elevated BLL) criterion in the Occupational Safety and Health Administration lead standard (29 CFR § 1910.1025) (7); and >65 µg/dL substantially exceeds current permissible levels in the United States.

<sup>†</sup>Because extremely high exposures were identified in 1991, the crystal factory was resurveyed in 1993.

*Occupational Blood Lead Survey — Continued*

A walk-through inspection of the crystal factory in 1993 identified sites characterized by poor housekeeping practices and conditions suggesting substantial airborne exposures.<sup>¶</sup> A total of 24 wipe samples were obtained to assay dust: 19 samples were from floors and machinery surfaces in working areas, two from an office hallway, and three from workers' hands (Table 2). All dust samples from processing areas were highly contaminated with lead (levels ranged from 3800 to 415,000 µg/sq ft); in comparison, guidelines for surface lead levels after residential lead abatement in the United States specify levels of 100 µg/sq ft for floors, 500 µg/sq ft for window sills, and 800 µg/sq ft for window wells (8). The highest values were detected in the lead oxide mixing area, where spillage of raw material was visible. Remedial measures were recommended to factory management.

*Reported by: LA Saryan, PhD, Industrial Toxicology Laboratory, West Allis Memorial Hospital, Wisconsin. EA Babayan, MD, Institute of General Hygiene and Occupational Diseases, Republic of Armenia, Yerevan. L Amirian, Palo Alto, California. Div of Surveillance, Hazard Evaluations, and Field Studies, National Institute for Occupational Safety and Health, CDC.*

**Editorial Note:** Controlling workplace lead exposure is essential in reducing the incidence of occupational disease caused by lead; monitoring of BLLs among workers is a necessary component of a comprehensive control strategy. In the United States, occupational lead exposure is regulated according to the provisions of the OSHA inorganic lead standard, which mandates periodic exposure assessment and blood lead monitoring for workers exposed above the action level (30 µg/m<sup>3</sup>) (7). Results of blood lead monitoring of workers are gathered by state agencies and compiled by CDC's National Institute for Occupational Safety and Health (NIOSH) (6).

Accurate blood lead analysis requires complex instrumentation and careful adherence to protocol; in many countries, the capacity of laboratories to reliably determine BLLs is limited. The findings in this report are the first to document reliable blood lead data reflecting occupational lead exposures in Armenia and establish the technical feasibility of sample collection at remote sites for transport to a laboratory appropriately equipped and certified to process the specimens. Although similar approaches

<sup>¶</sup>Airborne lead exposures, which are generally the major source of occupational exposure, were not measured in this survey because of technical limitations.

**TABLE 2. Dust wipe lead levels at the crystal factory, by site — Armenia, 1993**

| Site                          | No. samples | Range of lead levels<br>(µg/sq ft)* |
|-------------------------------|-------------|-------------------------------------|
| Lead oxide mixing area        | 4           | 66,000–415,000                      |
| Quartz sand mixing area       | 4           | 5,200– 19,800                       |
| Potassium nitrate mixing area | 2           | 11,000– 15,500                      |
| Glass casting area            | 2           | 7,000– 13,700                       |
| Artistic engraving            | 3           | 10,800– 18,200                      |
| Regular engraving             | 4           | 3,800– 51,400                       |
| Office hallway floor          | 2           | 606– 879                            |
| Hands of casting workers      | 3           | 288– 852 <sup>†</sup>               |

\*No Occupational Safety and Health Administration standard regulates the amount of lead in surface dust. For comparison, recommended clearance levels for lead on surfaces after residential lead abatement in the United States are 100 µg/sq ft for floors, 500 µg/sq ft for window sills, and 800 µg/sq ft for window wells (8).

<sup>†</sup>µg per hand.

*Occupational Blood Lead Survey — Continued*

may be applicable to the study of occupational lead exposures (and similar occupational health problems) in developing countries, economic constraints and other factors may limit the use of such approaches for routine surveillance.

Because of the small numbers of facilities and workers studied, voluntary participation, and the methods used for selection, the findings in this report are unlikely to be representative of working conditions in Armenia. However, they document conditions in the worksites studied.

Although these findings suggest that some lead-using worksites in Armenia are not associated with excessive risks for exposure, evidence of high risk was detected in one factory. Specifically, the BLLs in workers and environmental monitoring data from the lead crystal manufacturer indicate the need for improvement of conditions (including engineering controls, housekeeping, work practices, and environmental and employee monitoring) at this factory. The high BLLs measured in workers at this factory probably resulted from a combination of high lead levels in dust and presumed high airborne lead concentrations. Such exposures most likely occur in other lead-using industries in Armenia, particularly as a result of ongoing economic and social change. For example, the current severe electricity shortage and other factors reportedly have prompted the establishment of small, unregulated battery shops, in which environmental controls and worker protections probably are inadequate.

Systematic surveys of lead-using facilities—especially in industries associated with high risks for excessive lead exposures—are necessary to characterize lead hazards and to identify workers at risk for lead toxicity. In Armenia and in some other countries, such efforts can be facilitated by establishing local capacity to conduct more complete exposure assessments (including air monitoring) and accurate laboratory analyses of routine blood lead and environmental lead samples.

*References*

1. Saryan LA, Zenz C. Lead and its compounds. In: Zenz C, ed. Occupational medicine. 3rd ed. St. Louis, Missouri: Mosby, 1994:506–41.
2. CDC. Occupational lead surveillance—Taiwan, July–December 1993. MMWR 1995;44:181,187–9.
3. Saryan LA. Monitoring for human exposure to asbestos and toxic metals. Proceedings of the First World Congress of Armenian Engineers, Scientists, and Industrialists. Glendale, California: Armenian Engineers and Scientists of America, Inc., 1989:27–40.
4. Saryan LA. Surreptitious lead exposure from an Asian Indian medication. J Anal Toxicol 1991;15:336–8.
5. NIOSH. NIOSH manual of analytical methods [Method 7082]. 3rd ed. Cincinnati, Ohio: US Department of Health and Human Services, Public Health Service, CDC, 1984; DHHS publication no. (NIOSH)84-100.
6. CDC. Adult blood lead epidemiology and surveillance—United States, fourth quarter 1994. MMWR 1995;44:286–7.
7. Office of the Federal Register. Code of federal regulations: occupational safety and health standards. Subpart Z: toxic and hazardous substances—lead. Washington, DC: Office of the Federal Register, National Archives and Records Administration, 1985. (29 CFR § 1910.1025).
8. Department of Housing and Urban Development. Guidelines for the evaluation and control of lead-based paint hazards in housing. Washington, DC: US Department of Housing and Urban Development, June 1995.

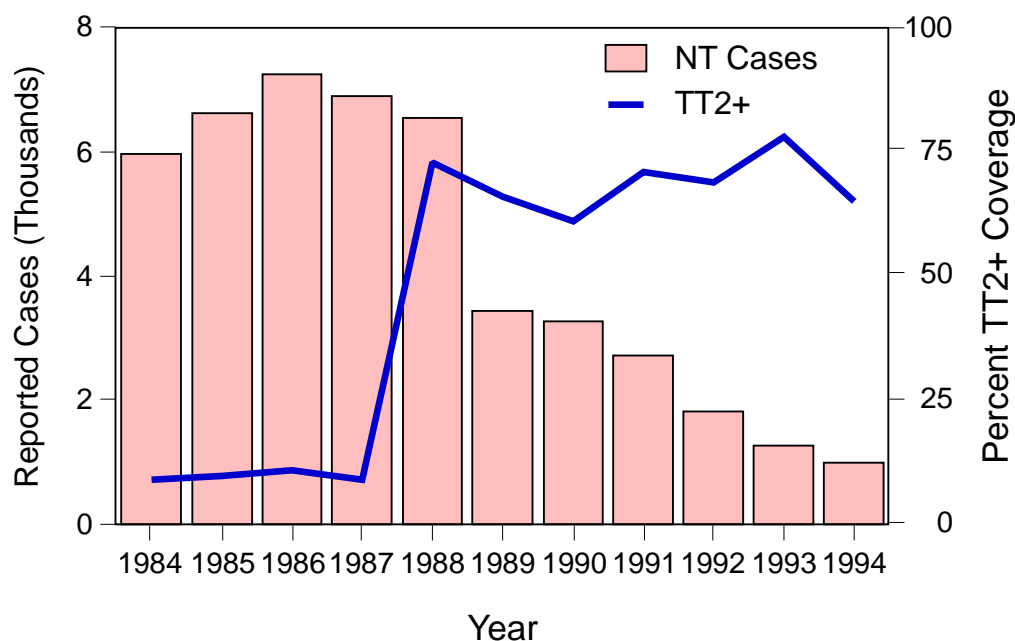


### Progress Toward Elimination of Neonatal Tetanus — Egypt, 1988–1994

Neonatal tetanus (NT) is a leading cause of neonatal mortality in many parts of the world and, of vaccine-preventable diseases, is second only to measles worldwide as a cause of childhood mortality (1). In Egypt, although tetanus toxoid (TT) vaccination for pregnant women was introduced in 1973, a nationwide survey in 1986 estimated that the NT mortality risk was seven per 1000 live births (2); in 1987, only 9% of pregnant women received at least two doses of TT (TT2+) through the routine vaccination program. Consequently, in 1988, the Ministry of Health initiated an aggressive NT elimination program; this program included 1) annual nationwide TT vaccination campaigns during 1988–1993 targeting pregnant women, and 2) supplementary campaigns during 1992–1994 targeting all women of childbearing age in districts where NT rates were highest. This report describes efforts to eliminate NT in Egypt that resulted in an 85% decline in reported cases during 1988–1994.

The annual nationwide TT vaccination campaigns from 1988 through 1993 targeted pregnant women in two rounds 1 month apart during November and December of each year. During each week-long campaign, mass media, community contacts, and mosque announcements were used in all 26 governorates of Egypt to increase public awareness of the need for TT vaccination during pregnancy. During these campaigns, nationwide TT2+ coverage increased from 9% in 1987 (before the vaccination campaigns began) to 73% in 1988 (the first year of the vaccination campaigns) (Figure 1). The increase in TT vaccination activity was sustained by the routine TT vaccination program throughout the year; the mean number of TT doses administered during noncampaign months increased from approximately 30,000 per month during 1987 and 1988 to 78,000 per month during 1989 and 1990.

**FIGURE 1. Number of reported cases of neonatal tetanus (NT) and percentage of pregnant women receiving at least two doses of tetanus toxoid (TT2+), by year — Egypt, 1984–1994**



*Neonatal Tetanus — Continued*

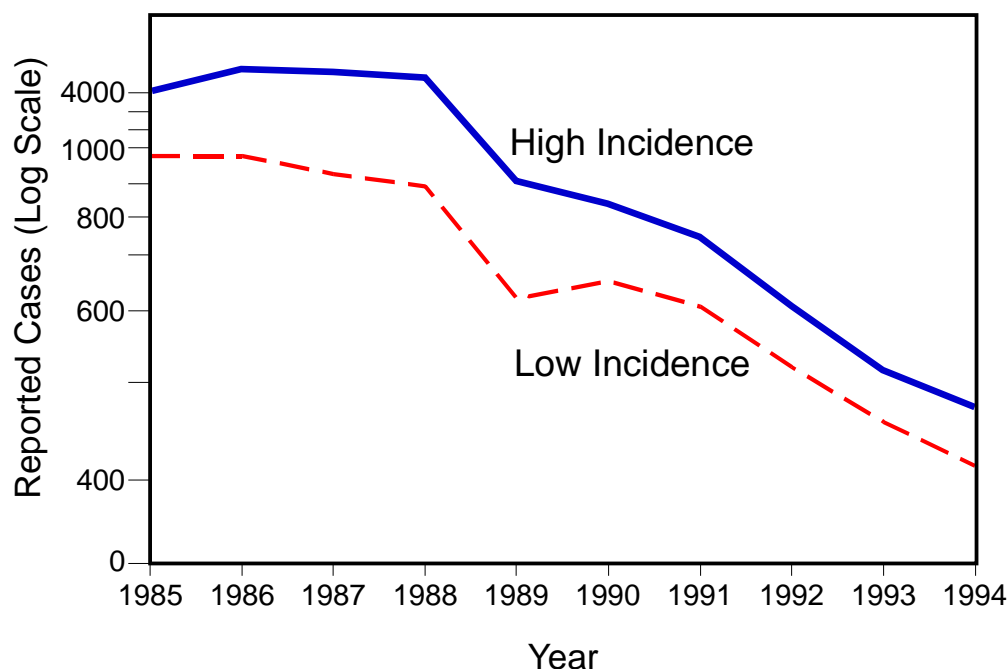
Reported NT cases declined from 6554 cases in 1988 to 3448 cases in 1989. Despite a sustained reduction in the national reported NT incidence from 3.7 cases per 1000 live births (LB) in 1987 to 1.6 cases per 1000 LB in 1991, the governorates with the highest reported NT incidence before the campaigns ( $>4$  NT cases per 1000 LB) accounted for a disproportionate percentage of cases during 1988–1991 (Figure 2). For example, in 1991, 66% of NT cases were reported from eight governorates that contained only 32% of the total population.

To improve coverage in these high-incidence governorates, the target population for both routine vaccination and the annual TT vaccination campaigns during 1992–1993 was expanded from pregnant women to include all married women of childbearing age in these governorates. Subsequently, the number of TT doses administered per campaign increased from an average of 485,000 doses in 1990 and 1991 (before the target group was expanded) to 873,000 doses in 1992 and 1993. Although the eight governorates reported 58% of the total NT cases in 1994, the reported incidence of NT was  $<1.5$  cases per 1000 LB in all eight governorates and  $<1$  case per 1000 LB in six governorates.

Because of the difficulty in reaching the highest incidence populations with both routine TT vaccination services and vaccination campaigns, in 1992 a “high-risk” NT elimination strategy was introduced. High-risk districts in the 26 governorates\* were those with an annual reported NT rate of  $\geq 1$  case per 1000 LB; these districts were targeted for supplementary vaccination activities in addition to the annual TT vaccination campaigns. During 1992–1994, two rounds of TT vaccination were conducted

\*The total number of districts in Egypt were 214 in 1992, 218 in 1993, and 223 in 1994.

**FIGURE 2. Number of reported cases of neonatal tetanus (NT), by incidence rate in the reporting governorate\* and year — Egypt, 1985–1994**



\*Governorates with reported NT rates of  $>4$  cases per 1000 live births in 1988 were classified as high incidence ( $n=8$  of the 26 governorates).

*Neonatal Tetanus — Continued*

1 month apart using mobile teams, supplementary vaccination sites, and intensive news media promotion of vaccination to reach all women of childbearing age. The number of supplementary vaccination activities increased from 12 in 1992 to 24 in 1993 and to 40 in 1994.

To improve assessment of the impact of the NT elimination program, ongoing efforts have been made to strengthen NT surveillance. In 1992, standardized NT case investigation forms and procedures were instituted nationwide, a daily telephonic notification system was introduced, and surveillance and vaccination data were analyzed at the national level by district. Even though surveillance was enhanced, the reported number of NT cases in Egypt decreased 63% from 2728 cases in 1991 (before the enhanced surveillance was established) (1.6 cases per 1000 LB) to 993 cases in 1994 (0.6 cases per 1000 LB). Similarly, the number of districts reporting  $\geq 1$  NT cases per 1000 LB declined from 80 in 1992 (the first year for which district-level data were available) to 38 in 1994.

*Reported by: Child Survival Project, Ministry of Health, Cairo, Egypt. Regional Office for the Eastern Mediterranean Region, World Health Organization, Alexandria, Egypt. Expanded Program on Immunization, Global Program for Vaccines and Immunization, World Health Organization, Geneva, Switzerland. National Immunization Program, CDC.*

**Editorial Note:** In 1994, an estimated 490,000 neonatal deaths worldwide were caused by NT<sup>†</sup>; however, 730,000 neonatal deaths were prevented in developing countries through vaccination of mothers with TT2+ or through clean delivery and cord-care practices (3). In 1989, the World Health Organization (WHO) adopted a resolution to eliminate NT worldwide (4), and in 1993—when the estimated global NT death rate was 6.5 cases per 1000 LB and global TT2+ coverage among pregnant women was 45%—WHO defined the elimination of NT as a reduction in incidence to  $<1$  case per 1000 LB in each health district of every country (1,5). To achieve and maintain NT elimination,  $\geq 80\%$  of infants need to be protected at birth through vaccination of their mothers with TT2+ or through clean delivery and cord-care practices (4). In addition, effective surveillance is necessary to enable detection and timely investigation of cases.

Efforts to eliminate NT in Egypt reflect the experiences of other countries with a high incidence of NT and illustrate options for improving these efforts (6). For example, the annual nationwide TT vaccination campaigns resulted in rapid increases in national TT2+ coverage, while improvements in surveillance indicated that NT cases were clustered in areas with limited access to clean childbirth and vaccination services. This persistent clustering of cases required targeted vaccination activities in high-risk districts to reach persons who consistently were missed by both routine vaccination services and the national TT campaigns. Efforts to provide supplementary TT vaccination at the district level have been implemented successfully in other countries (e.g., Indonesia and Thailand) (7,8). Because of the mortality caused by NT in developing countries and the difficulty in reaching “high risk” areas that are consistently missed by the routine TT vaccination program, specific strategies guided by surveillance data should be designed and implemented to reach those populations and geographic areas associated with the highest risks for NT.

<sup>†</sup>Estimates of NT deaths are derived 1) from national mortality data, 2) from NT death rates from NT surveys, or 3) in the absence of surveys, by assuming that rates are similar for countries with similar socioeconomic conditions, then adjusting for TT coverage levels.

*Neonatal Tetanus — Continued**References*

1. CDC. Progress toward the global elimination of neonatal tetanus, 1989–1993. *MMWR* 1994;43:885–7,893–4.
2. Expanded Program on Immunization. Neonatal tetanus mortality surveys—Egypt. *Wkly Epidemiol Rec* 1987;62:332–5.
3. Expanded Program on Immunization. WHO/EPI Information System. Geneva, Switzerland: World Health Organization, September 1995. (WHO document no. WHO/EPI/CEIS/95.2 AM).
4. World Health Assembly. Expanded Program on Immunization. Geneva, Switzerland: World Health Organization, 1989. (Resolution no. 42.32).
5. Global Advisory Group, Expanded Program on Immunization, World Health Organization. Achieving the major disease control goals. *Wkly Epidemiol Rec* 1994;69:29–31,34–5.
6. Mansour E, Baron AR. The Expanded Program on Immunization in Egypt, 1984–1994. Cairo, Egypt: Egypt Ministry of Health, Child Survival Project, July 1995.
7. Yusuf B, Solter S, Bertsch D, Arnold RB. Impact of a tetanus toxoid immunization mass campaign on neonatal tetanus mortality in Aceh Province, Indonesia. *Southeast Asian J Trop Med Public Health* 1991;22:351–6.
8. Chongsuvivatwong V, Bujakorn L, Kanpoy V, Treetrong R. Control of neonatal tetanus in Southern Thailand. *Int J Epidemiol* 1993;22:931–5.

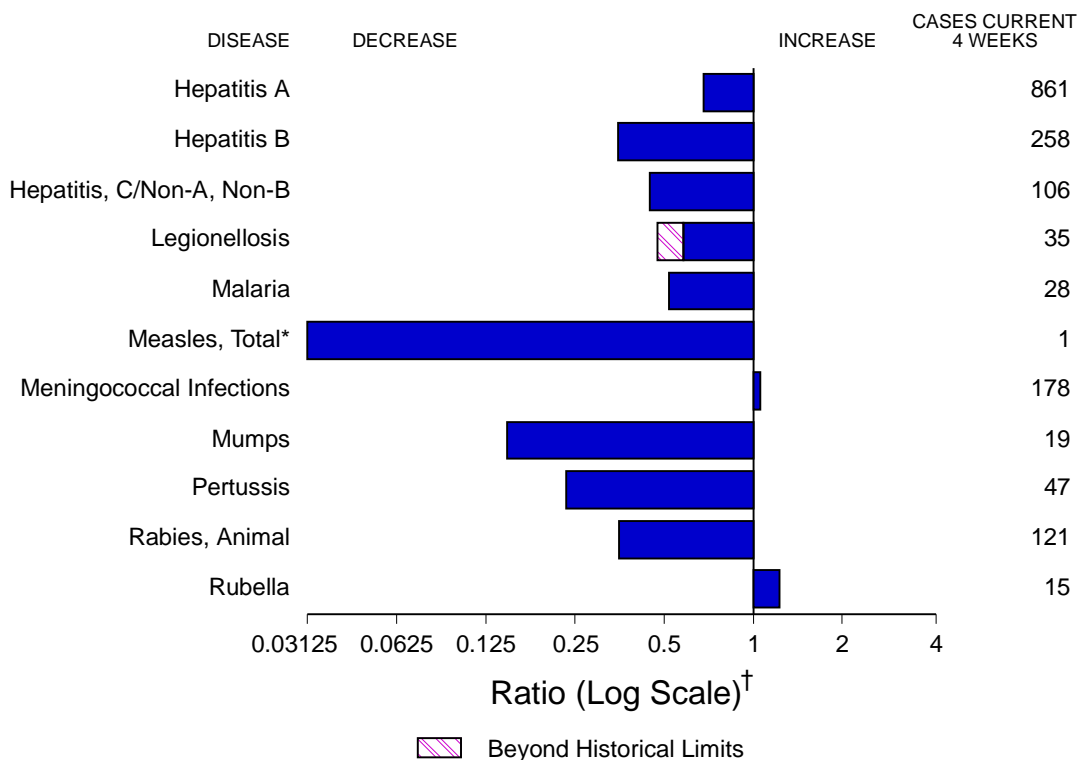
*Notice to Readers****Vaccines for International Travel Satellite Videoconference***

*Vaccines for International Travel*, a satellite videoconference, will be broadcast live to sites nationwide over the Public Health Training Network from CDC in Atlanta on March 8, 1996, from 12 noon until 3:30 p.m. eastern standard time. Toll-free telephone lines will be available for participants to ask questions about travel vaccination. The course is aimed at persons who are responsible for providing health care to international travelers. Additional information is available from state immunization coordinators or from Pam Reese, University of North Carolina School of Public Health, telephone (919) 966-1104; e-mail pam\_reese@unc.edu.

*Notice to Readers****Course in Hospital Epidemiology***

CDC, the Society for Healthcare Epidemiology of America (SHEA), and the American Hospital Association will cosponsor a hospital epidemiology training course May 18–21, 1996, in New York City. The course, designed for infectious disease fellows, new hospital epidemiologists, and infection-control practitioners, provides hands-on exercises to improve skills in detection, investigation, and control of epidemiologic problems encountered in the hospital setting and lectures and seminars on fundamental aspects of hospital epidemiology.

Additional information is available from SHEA Meetings Department, 875 Kings Highway, Suite 200, Woodbury, NJ 08095-3172; telephone (609) 845-1720; fax (609) 853-0411.

**FIGURE I. Selected notifiable disease reports, comparison of 4-week totals ending January 27, 1996, with historical data — United States**

\* The large apparent decrease in the number of reported cases of measles (total) reflects dramatic fluctuations in the historical baseline. (Ratio [log scale] for week 4 measles [total] is .0077922.)

<sup>†</sup> Ratio of current 4-week total to mean of 15 4-week totals (from previous, comparable, and subsequent 4-week periods for the past 5 years). The point where the hatched area begins is based on the mean and two standard deviations of these 4-week totals.

**TABLE I. Summary — cases of selected notifiable diseases, United States, cumulative, week ending January 27, 1996 (4th Week)**

|   | Cum. 1996 |  | Cum. 1996 |
|---|-----------|--|-----------|
| Anthrax                                     | -         | HIV infection, pediatric* <sup>§</sup> | -         |
| Brucellosis                                 | 3         | Plague                                 | -         |
| Cholera                                     | -         | Poliomyelitis, paralytic <sup>¶</sup>  | -         |
| Congenital rubella syndrome                 | -         | Psittacosis                            | 1         |
| Cryptosporidiosis*                          | 44        | Rabies, human                          | -         |
| Diphtheria                                  | -         | Rocky Mountain spotted fever (RMSF)    | 1         |
| Encephalitis: California*                   | -         | Streptococcal toxic-shock syndrome*    | -         |
| eastern equine*                             | -         | Syphilis, congenital**                 | -         |
| St. Louis*                                  | -         | Tetanus                                | -         |
| western equine*                             | -         | Toxic-shock syndrome                   | 7         |
| Hansen Disease                              | 3         | Trichinosis                            | 2         |
| Hantavirus pulmonary syndrome* <sup>†</sup> | -         | Typhoid fever                          | 6         |

\* Not notifiable in all states.

<sup>†</sup> Updated weekly from reports to the Division of Viral and Rickettsial Diseases, National Center for Infectious Diseases (NCID).

<sup>§</sup> Updated monthly to the Division of HIV/AIDS Prevention, National Center for Prevention Services (NCPS).

<sup>¶</sup> No suspected cases of polio reported for 1996.

\*\* Updated quarterly from reports to the Division of STD Prevention, NCPS. First quarter 1996 is not yet available.

-: no reported cases

**TABLE II. Cases of selected notifiable diseases, United States, weeks ending January 27, 1996, and January 28, 1995 (4th Week)**

| Reporting Area | AIDS*     |           | Chlamydia | Escherichia coli O157:H7 |           | Gonorrhea |           | Hepatitis C/NA,NB |           | Legionellosis |           |
|----------------|-----------|-----------|-----------|--------------------------|-----------|-----------|-----------|-------------------|-----------|---------------|-----------|
|                | Cum. 1996 | Cum. 1995 |           | NETSS†                   | PHLIS‡    | Cum. 1996 | Cum. 1995 | Cum. 1996         | Cum. 1995 | Cum. 1996     | Cum. 1995 |
|                |           |           |           | Cum. 1996                | Cum. 1996 |           |           |                   |           |               |           |
| UNITED STATES  | -         | 5,082     | 6,900     | 37                       | 7         | 18,922    | 28,428    | 158               | 145       | 46            | 78        |
| NEW ENGLAND    | -         | 290       | 670       | 8                        | 1         | 452       | 349       | -                 | -         | 2             | -         |
| Maine          | -         | -         | -         | 1                        | -         | 3         | 3         | -                 | -         | -             | -         |
| N.H.           | -         | 5         | 45        | 1                        | 1         | 7         | 7         | -                 | -         | -             | -         |
| Vt.            | -         | -         | -         | -                        | -         | 11        | 2         | -                 | -         | -             | -         |
| Mass.          | -         | 191       | 483       | 4                        | -         | 192       | 279       | -                 | -         | 2             | -         |
| R.I.           | -         | 9         | 142       | 1                        | -         | 44        | 38        | -                 | -         | -             | -         |
| Conn.          | -         | 85        | -         | 1                        | -         | 195       | 20        | -                 | -         | N             | N         |
| MID. ATLANTIC  | -         | 1,511     | 836       | 1                        | -         | 701       | 2,956     | 11                | 18        | 3             | 10        |
| Upstate N.Y.   | -         | 39        | N         | -                        | -         | -         | 173       | 9                 | 5         | -             | 1         |
| N.Y. City      | -         | 909       | -         | -                        | -         | -         | 1,054     | 1                 | -         | -             | 1         |
| N.J.           | -         | 334       | 836       | -                        | -         | 245       | 373       | -                 | 8         | -             | 4         |
| Pa.            | -         | 229       | -         | N                        | -         | 456       | 1,356     | 1                 | 5         | 3             | 4         |
| E.N. CENTRAL   | -         | 451       | 1,747     | 5                        | 1         | 3,813     | 6,515     | 22                | 24        | 21            | 34        |
| Ohio           | -         | 31        | -         | 3                        | -         | 394       | 2,205     | 1                 | 1         | 11            | 14        |
| Ind.           | -         | 37        | -         | 1                        | -         | 621       | 590       | -                 | -         | 4             | 7         |
| Ill.           | -         | 243       | -         | 1                        | -         | 1,517     | 1,316     | -                 | 9         | -             | 6         |
| Mich.          | -         | 134       | 1,667     | -                        | -         | 1,210     | 1,812     | 21                | 14        | 6             | 1         |
| Wis.           | -         | 6         | 80        | N                        | 1         | 71        | 592       | -                 | -         | -             | 6         |
| W.N. CENTRAL   | -         | 100       | 677       | 6                        | 1         | 811       | 1,694     | 15                | 6         | 1             | 8         |
| Minn.          | -         | 25        | -         | 2                        | 1         | -         | 248       | -                 | -         | -             | -         |
| Iowa           | -         | 4         | -         | 1                        | -         | -         | 85        | 15                | 1         | 1             | 2         |
| Mo.            | -         | 50        | 623       | -                        | -         | 592       | 1,027     | -                 | 2         | -             | 6         |
| N. Dak.        | -         | -         | -         | -                        | -         | -         | -         | -                 | -         | -             | -         |
| S. Dak.        | -         | -         | 54        | -                        | -         | 6         | 12        | -                 | 1         | -             | -         |
| Nebr.          | -         | 12        | -         | -                        | -         | -         | 59        | -                 | 1         | -             | -         |
| Kans.          | -         | 9         | -         | 3                        | -         | 213       | 263       | -                 | 1         | -             | -         |
| S. ATLANTIC    | -         | 1,201     | 1,654     | 5                        | -         | 9,357     | 9,227     | 5                 | 14        | 7             | 15        |
| Del.           | -         | 30        | -         | -                        | -         | 124       | 175       | -                 | -         | -             | -         |
| Md.            | -         | 172       | 215       | N                        | -         | 926       | 1,344     | -                 | -         | 2             | 4         |
| D.C.           | -         | 36        | N         | -                        | -         | 278       | 528       | -                 | -         | -             | -         |
| Va.            | -         | 130       | 832       | N                        | -         | 604       | 793       | -                 | -         | 1             | 1         |
| W. Va.         | -         | 4         | -         | N                        | -         | 45        | 73        | 3                 | 5         | 1             | 1         |
| N.C.           | -         | 4         | -         | 2                        | -         | 1,210     | 2,036     | 1                 | 6         | 3             | 5         |
| S.C.           | -         | 73        | -         | 1                        | -         | 3,695     | 885       | 1                 | 1         | -             | -         |
| Ga.            | -         | 234       | -         | -                        | -         | 2,012     | 1,868     | -                 | -         | -             | 4         |
| Fla.           | -         | 518       | 607       | -                        | -         | 463       | 1,525     | -                 | 2         | -             | -         |
| E.S. CENTRAL   | -         | 93        | 354       | 2                        | -         | 1,931     | 3,523     | -                 | 27        | 6             | 3         |
| Ky.            | -         | 7         | -         | -                        | -         | 328       | 435       | -                 | 1         | 2             | 1         |
| Tenn.          | -         | 34        | 349       | N                        | -         | 440       | 507       | -                 | 26        | 2             | 1         |
| Ala.           | -         | 34        | -         | 1                        | -         | 1,107     | 1,899     | -                 | -         | -             | -         |
| Miss.          | -         | 18        | 5         | 1                        | -         | 56        | 682       | -                 | -         | 2             | 1         |
| W.S. CENTRAL   | -         | 368       | -         | 2                        | 3         | 358       | 1,558     | 44                | 3         | -             | -         |
| Ark.           | -         | 20        | -         | 1                        | -         | 14        | 238       | -                 | -         | -             | -         |
| La.            | -         | 90        | -         | N                        | 3         | 344       | 1,062     | 1                 | -         | -             | -         |
| Okla.          | -         | 35        | -         | 1                        | -         | -         | 44        | 41                | 3         | -             | -         |
| Tex.           | -         | 223       | -         | -                        | -         | -         | 214       | 2                 | -         | -             | -         |
| MOUNTAIN       | -         | 162       | 206       | 4                        | -         | 404       | 639       | 39                | 12        | 2             | 4         |
| Mont.          | -         | -         | -         | -                        | -         | 2         | 8         | 2                 | 2         | -             | 1         |
| Idaho          | -         | 5         | 87        | 1                        | -         | 5         | 5         | 8                 | 1         | -             | -         |
| Wyo.           | -         | 1         | 51        | -                        | -         | 5         | 4         | 10                | 4         | -             | -         |
| Colo.          | -         | 74        | -         | 2                        | -         | 164       | 231       | 3                 | 3         | 2             | -         |
| N. Mex.        | -         | 7         | -         | -                        | -         | 81        | 80        | 10                | -         | -             | -         |
| Ariz.          | -         | 36        | -         | N                        | -         | 121       | 188       | 3                 | 2         | -             | 1         |
| Utah           | -         | 5         | 68        | -                        | -         | 26        | 11        | 3                 | -         | -             | -         |
| Nev.           | -         | 34        | -         | 1                        | -         | -         | 112       | -                 | -         | -             | 2         |
| PACIFIC        | -         | 906       | 756       | 4                        | 1         | 1,095     | 1,967     | 22                | 41        | 4             | 4         |
| Wash.          | -         | 90        | 695       | -                        | 1         | 219       | 168       | -                 | 2         | -             | -         |
| Oreg.          | -         | 52        | -         | 3                        | -         | 9         | 29        | 2                 | 3         | -             | -         |
| Calif.         | -         | 706       | -         | -                        | -         | 809       | 1,647     | 19                | 29        | 4             | 2         |
| Alaska         | -         | 18        | N         | -                        | -         | 40        | 84        | 1                 | -         | -             | -         |
| Hawaii         | -         | 40        | 61        | N                        | -         | 18        | 39        | -                 | 7         | -             | 2         |
| Guam           | -         | -         | -         | N                        | -         | -         | 6         | -                 | -         | -             | -         |
| P.R.           | -         | 62        | N         | N                        | U         | 5         | 47        | 2                 | 1         | -             | -         |
| V.I.           | -         | -         | N         | N                        | U         | -         | -         | -                 | -         | -             | -         |
| Amer. Samoa    | -         | -         | -         | N                        | U         | -         | 3         | -                 | -         | -             | -         |
| C.N.M.I.       | -         | -         | N         | N                        | U         | -         | -         | -                 | -         | -             | -         |

N: Not notifiable U: Unavailable -: no reported cases C.N.M.I.: Commonwealth of Northern Mariana Islands

\*Updated monthly to the Division of HIV/AIDS Prevention, National Center for Prevention Services, last update December 15, 1995.

†National Electronic Telecommunications System for Surveillance.

§Public Health Laboratory Information System.

**TABLE II. (Cont'd.) Cases of selected notifiable diseases, United States, weeks ending January 27, 1996, and January 28, 1995 (4th Week)**

| Reporting Area | Lyme Disease |           | Malaria   |           | Meningococcal Disease |           | Syphilis (Primary & Secondary) |           | Tuberculosis |           | Rabies, Animal |           |
|----------------|--------------|-----------|-----------|-----------|-----------------------|-----------|--------------------------------|-----------|--------------|-----------|----------------|-----------|
|                | Cum. 1996    | Cum. 1995 | Cum. 1996 | Cum. 1995 | Cum. 1996             | Cum. 1995 | Cum. 1996                      | Cum. 1995 | Cum. 1996    | Cum. 1995 | Cum. 1996      | Cum. 1995 |
| UNITED STATES  | 97           | 215       | 40        | 56        | 250                   | 226       | 578                            | 1,165     | 455          | 737       | 164            | 409       |
| NEW ENGLAND    | 7            | -         | 2         | 2         | 13                    | 13        | 11                             | 12        | 16           | 8         | 28             | 117       |
| Maine          | -            | -         | -         | -         | 3                     | 2         | -                              | -         | 4            | -         | -              | -         |
| N.H.           | -            | -         | -         | -         | 1                     | 6         | -                              | -         | -            | -         | 1              | 17        |
| Vt.            | -            | -         | -         | -         | 1                     | -         | -                              | -         | -            | -         | 1              | 15        |
| Mass.          | 4            | -         | 2         | -         | 2                     | 3         | 6                              | 6         | 3            | 1         | 10             | 61        |
| R.I.           | 3            | -         | -         | 2         | -                     | -         | -                              | -         | 4            | 2         | 5              | -         |
| Conn.          | -            | -         | -         | -         | 6                     | 2         | 5                              | 6         | 5            | 5         | 11             | 24        |
| MID. ATLANTIC  | 78           | 164       | 1         | 13        | 5                     | 26        | 13                             | 104       | 30           | 54        | 25             | 110       |
| Upstate N.Y.   | 1            | 12        | -         | 2         | 2                     | 10        | -                              | 5         | -            | 5         | 17             | 67        |
| N.Y. City      | 53           | 27        | 1         | 5         | 1                     | 4         | 5                              | 80        | 7            | 11        | -              | -         |
| N.J.           | -            | 34        | -         | 5         | -                     | 8         | 4                              | 9         | 10           | 9         | 6              | 19        |
| Pa.            | 24           | 91        | -         | 1         | 2                     | 4         | 4                              | 10        | 13           | 29        | 2              | 24        |
| E.N. CENTRAL   | 1            | 5         | 3         | 13        | 37                    | 41        | 141                            | 194       | 150          | 97        | 2              | 1         |
| Ohio           | 1            | 3         | -         | -         | 25                    | 10        | 63                             | 64        | 15           | 24        | 1              | 1         |
| Ind.           | -            | 1         | -         | -         | 3                     | 9         | 25                             | 11        | 2            | 3         | -              | -         |
| Ill.           | -            | 1         | -         | 10        | 7                     | 14        | 44                             | 68        | 122          | 50        | -              | -         |
| Mich.          | -            | -         | 3         | 1         | 2                     | 4         | 5                              | 26        | 11           | 19        | -              | -         |
| Wis.           | -            | -         | -         | 2         | -                     | 4         | 4                              | 25        | -            | 1         | 1              | -         |
| W.N. CENTRAL   | 4            | 4         | -         | 1         | 22                    | 9         | 16                             | 61        | 11           | 21        | 13             | 23        |
| Minn.          | -            | -         | -         | -         | -                     | -         | -                              | 3         | 2            | -         | 1              | -         |
| Iowa           | 4            | -         | -         | -         | 10                    | 3         | -                              | 4         | 3            | 6         | 12             | 7         |
| Mo.            | -            | 2         | -         | 1         | 4                     | 4         | 16                             | 54        | 3            | 7         | -              | 4         |
| N. Dak.        | -            | -         | -         | -         | -                     | -         | -                              | -         | -            | -         | -              | 2         |
| S. Dak.        | -            | -         | -         | -         | 2                     | -         | -                              | -         | -            | -         | -              | 7         |
| Nebr.          | -            | -         | -         | -         | 3                     | 1         | -                              | -         | -            | -         | -              | -         |
| Kans.          | -            | 2         | -         | -         | 3                     | 1         | -                              | -         | 3            | 8         | -              | 3         |
| S. ATLANTIC    | 5            | 37        | 11        | 10        | 39                    | 38        | 169                            | 292       | 23           | 94        | 84             | 114       |
| Del.           | -            | 4         | 2         | -         | 1                     | -         | 4                              | 1         | -            | 2         | 1              | 7         |
| Md.            | 5            | 25        | 2         | 3         | 6                     | -         | 22                             | 28        | 3            | 42        | 32             | 29        |
| D.C.           | -            | -         | 1         | -         | 2                     | 1         | 7                              | 13        | -            | 9         | -              | -         |
| Va.            | -            | -         | 3         | 3         | 3                     | 4         | 31                             | 37        | -            | -         | 24             | 19        |
| W. Va.         | -            | 4         | -         | -         | -                     | -         | -                              | -         | 4            | 8         | 1              | 4         |
| N.C.           | -            | 3         | 2         | 1         | 6                     | 6         | 48                             | 86        | 11           | 6         | 11             | 26        |
| S.C.           | -            | 1         | -         | -         | 9                     | 2         | 33                             | 55        | 5            | 10        | 4              | 10        |
| Ga.            | -            | -         | 1         | 1         | 8                     | 13        | 14                             | 42        | -            | 17        | 11             | 14        |
| Fla.           | -            | -         | -         | 2         | 4                     | 12        | 10                             | 30        | -            | -         | -              | 5         |
| E.S. CENTRAL   | -            | 1         | -         | 1         | 18                    | 7         | 180                            | 292       | 52           | 50        | 3              | 14        |
| Ky.            | -            | -         | -         | -         | 6                     | 1         | 19                             | 18        | 5            | 5         | -              | 2         |
| Tenn.          | -            | -         | -         | -         | -                     | -         | 38                             | 45        | -            | 18        | -              | 6         |
| Ala.           | -            | -         | -         | 1         | 10                    | 4         | 44                             | 54        | 19           | 27        | 3              | 6         |
| Miss.          | -            | 1         | -         | -         | 2                     | 2         | 79                             | 175       | 28           | -         | -              | -         |
| W.S. CENTRAL   | -            | -         | -         | -         | 28                    | 10        | 41                             | 145       | 9            | 7         | 1              | 11        |
| Ark.           | -            | -         | -         | -         | 4                     | -         | 20                             | 43        | -            | -         | -              | 8         |
| La.            | -            | -         | -         | -         | 6                     | 1         | 21                             | 82        | -            | -         | -              | 1         |
| Okla.          | -            | -         | -         | -         | 2                     | 1         | -                              | 6         | 9            | 7         | 1              | 2         |
| Tex.           | -            | -         | -         | -         | 16                    | 8         | -                              | 14        | -            | -         | -              | -         |
| MOUNTAIN       | 1            | 1         | 5         | 4         | 23                    | 19        | 6                              | 17        | 9            | 16        | 2              | 5         |
| Mont.          | -            | -         | -         | 1         | -                     | -         | -                              | -         | -            | -         | -              | 3         |
| Idaho          | -            | -         | -         | -         | 3                     | 2         | -                              | -         | 1            | 1         | -              | -         |
| Wyo.           | 1            | -         | -         | -         | -                     | -         | -                              | -         | -            | -         | 2              | -         |
| Colo.          | -            | -         | 3         | 1         | 3                     | 7         | 5                              | 7         | -            | -         | -              | -         |
| N. Mex.        | -            | -         | 1         | 2         | 7                     | 4         | -                              | 4         | 1            | 4         | -              | -         |
| Ariz.          | -            | -         | -         | -         | 8                     | 6         | 1                              | 2         | 7            | 11        | -              | 2         |
| Utah           | -            | -         | 1         | -         | 2                     | -         | -                              | 1         | -            | -         | -              | -         |
| Nev.           | -            | 1         | -         | -         | -                     | -         | -                              | 3         | -            | -         | -              | -         |
| PACIFIC        | 1            | 3         | 18        | 12        | 65                    | 63        | 1                              | 48        | 155          | 390       | 6              | 14        |
| Wash.          | -            | -         | -         | -         | 3                     | 2         | -                              | 1         | 14           | 22        | -              | -         |
| Oreg.          | 1            | -         | 2         | 1         | 16                    | 9         | 1                              | 1         | 5            | 2         | -              | -         |
| Calif.         | -            | 3         | 16        | 10        | 44                    | 51        | -                              | 46        | 124          | 346       | 4              | 14        |
| Alaska         | -            | -         | -         | 1         | 1                     | -         | -                              | -         | 6            | 7         | 2              | -         |
| Hawaii         | -            | -         | -         | -         | 1                     | 1         | -                              | -         | 6            | 13        | -              | -         |
| Guam           | -            | -         | -         | -         | -                     | -         | -                              | -         | -            | 4         | -              | -         |
| P.R.           | -            | -         | -         | -         | -                     | 1         | 10                             | 17        | -            | -         | 1              | 6         |
| V.I.           | -            | -         | -         | -         | -                     | -         | -                              | -         | -            | -         | -              | -         |
| Amer. Samoa    | -            | -         | -         | -         | -                     | -         | -                              | -         | -            | 1         | -              | -         |
| C.N.M.I.       | -            | -         | -         | -         | -                     | -         | -                              | -         | -            | -         | -              | -         |

N: Not notifiable

U: Unavailable

-: no reported cases

**TABLE III. Cases of selected notifiable diseases preventable by vaccination, United States, weeks ending January 27, 1996, and January 28, 1995 (4th Week)**

| Reporting Area | <i>H. influenzae</i> ,<br>invasive |              | Hepatitis (viral), by type |              |              |              | Measles (Rubeola) |              |                       |              |
|----------------|------------------------------------|--------------|----------------------------|--------------|--------------|--------------|-------------------|--------------|-----------------------|--------------|
|                | Cum.<br>1996*                      | Cum.<br>1995 | A                          |              | B            |              | Indigenous        |              | Imported <sup>†</sup> |              |
|                |                                    |              | Cum.<br>1996               | Cum.<br>1995 | Cum.<br>1996 | Cum.<br>1995 | 1996              | Cum.<br>1996 | 1996                  | Cum.<br>1996 |
| UNITED STATES  | 80                                 | 105          | 1,221                      | 1,436        | 345          | 479          | -                 | -            | -                     | 1            |
| NEW ENGLAND    | 5                                  | 1            | 19                         | 10           | 2            | 16           | -                 | -            | -                     | -            |
| Maine          | -                                  | -            | 2                          | 3            | -            | 1            | -                 | -            | -                     | -            |
| N.H.           | 4                                  | -            | 1                          | -            | -            | -            | -                 | -            | -                     | -            |
| Vt.            | -                                  | 1            | -                          | -            | -            | -            | -                 | -            | -                     | -            |
| Mass.          | 1                                  | -            | 9                          | 2            | 1            | 2            | -                 | -            | -                     | -            |
| R.I.           | -                                  | -            | 2                          | 2            | 1            | 2            | -                 | -            | -                     | -            |
| Conn.          | -                                  | -            | 5                          | 3            | -            | 11           | -                 | -            | -                     | -            |
| MID. ATLANTIC  | 6                                  | 11           | 66                         | 56           | 44           | 36           | -                 | -            | -                     | -            |
| Upstate N.Y.   | 3                                  | 2            | 2                          | 6            | 6            | 6            | -                 | -            | -                     | -            |
| N.Y. City      | 1                                  | 1            | 56                         | 16           | 32           | 7            | -                 | -            | -                     | -            |
| N.J.           | -                                  | 3            | -                          | 17           | -            | 14           | -                 | -            | -                     | -            |
| Pa.            | 2                                  | 5            | 8                          | 17           | 6            | 9            | -                 | -            | -                     | -            |
| E.N. CENTRAL   | 13                                 | 30           | 98                         | 286          | 39           | 72           | -                 | -            | -                     | -            |
| Ohio           | 13                                 | 18           | 66                         | 146          | 9            | 5            | -                 | -            | -                     | -            |
| Ind.           | -                                  | 2            | 9                          | 20           | 1            | 12           | -                 | -            | -                     | -            |
| Ill.           | -                                  | 9            | -                          | 68           | 2            | 24           | -                 | -            | -                     | -            |
| Mich.          | -                                  | 1            | 23                         | 33           | 27           | 28           | -                 | -            | -                     | -            |
| Wis.           | -                                  | -            | -                          | 19           | -            | 3            | -                 | -            | -                     | -            |
| W.N. CENTRAL   | 6                                  | 3            | 75                         | 57           | 24           | 47           | -                 | -            | -                     | -            |
| Minn.          | -                                  | -            | -                          | 3            | -            | -            | -                 | -            | -                     | -            |
| Iowa           | 5                                  | 1            | 32                         | 4            | 20           | 5            | -                 | -            | -                     | -            |
| Mo.            | 1                                  | 2            | 22                         | 44           | 1            | 40           | -                 | -            | -                     | -            |
| N. Dak.        | -                                  | -            | 1                          | -            | -            | -            | -                 | -            | -                     | -            |
| S. Dak.        | -                                  | -            | 6                          | -            | -            | -            | -                 | -            | -                     | -            |
| Nebr.          | -                                  | -            | 4                          | 2            | -            | 2            | -                 | -            | -                     | -            |
| Kans.          | -                                  | -            | 10                         | 4            | 3            | -            | -                 | -            | -                     | -            |
| S. ATLANTIC    | 11                                 | 20           | 50                         | 57           | 68           | 73           | -                 | -            | -                     | -            |
| Del.           | -                                  | -            | 1                          | 1            | -            | 1            | -                 | -            | -                     | -            |
| Md.            | 1                                  | 4            | 17                         | 14           | 19           | 14           | -                 | -            | -                     | -            |
| D.C.           | -                                  | -            | -                          | 1            | 1            | 6            | -                 | -            | -                     | -            |
| Va.            | -                                  | 3            | 2                          | 19           | 4            | 12           | -                 | -            | -                     | -            |
| W. Va.         | -                                  | -            | 2                          | 2            | 3            | 5            | -                 | -            | -                     | -            |
| N.C.           | 2                                  | 9            | 11                         | 7            | 36           | 26           | -                 | -            | -                     | -            |
| S.C.           | -                                  | -            | 6                          | 1            | 4            | 1            | -                 | -            | -                     | -            |
| Ga.            | 8                                  | 4            | -                          | -            | -            | -            | -                 | -            | -                     | -            |
| Fla.           | -                                  | -            | 11                         | 12           | 1            | 8            | -                 | -            | -                     | -            |
| E.S. CENTRAL   | 1                                  | 1            | 42                         | 24           | 4            | 39           | -                 | -            | -                     | -            |
| Ky.            | -                                  | -            | 4                          | 7            | -            | 10           | -                 | -            | -                     | -            |
| Tenn.          | -                                  | -            | -                          | 6            | -            | 23           | -                 | -            | -                     | -            |
| Ala.           | 1                                  | 1            | 7                          | 9            | 4            | 6            | -                 | -            | -                     | -            |
| Miss.          | -                                  | -            | 31                         | 2            | -            | -            | -                 | -            | -                     | -            |
| W.S. CENTRAL   | 4                                  | -            | 110                        | 40           | 9            | 9            | -                 | -            | -                     | -            |
| Ark.           | -                                  | -            | 33                         | -            | 2            | -            | -                 | -            | -                     | -            |
| La.            | -                                  | -            | 3                          | -            | 1            | 1            | -                 | -            | -                     | -            |
| Okla.          | 4                                  | -            | 60                         | 29           | 6            | 7            | -                 | -            | -                     | -            |
| Tex.           | -                                  | -            | 14                         | 11           | -            | 1            | -                 | -            | -                     | -            |
| MOUNTAIN       | 7                                  | 9            | 211                        | 222          | 64           | 34           | -                 | -            | -                     | -            |
| Mont.          | -                                  | -            | 6                          | 4            | -            | 2            | -                 | -            | -                     | -            |
| Idaho          | 1                                  | -            | 37                         | 21           | 10           | 2            | -                 | -            | -                     | -            |
| Wyo.           | -                                  | -            | 1                          | 3            | -            | -            | -                 | -            | -                     | -            |
| Colo.          | 1                                  | -            | 14                         | 55           | 9            | 9            | -                 | -            | -                     | -            |
| N. Mex.        | 2                                  | 2            | 45                         | 75           | 25           | 12           | -                 | -            | -                     | -            |
| Ariz.          | 1                                  | 6            | 28                         | 32           | 6            | 5            | -                 | -            | -                     | -            |
| Utah           | 1                                  | -            | 63                         | 21           | 8            | -            | -                 | -            | -                     | -            |
| Nev.           | 1                                  | 1            | 17                         | 11           | 6            | 4            | U                 | -            | U                     | -            |
| PACIFIC        | 27                                 | 30           | 550                        | 684          | 91           | 153          | -                 | -            | -                     | 1            |
| Wash.          | -                                  | -            | 11                         | 11           | 3            | 2            | -                 | -            | -                     | -            |
| Oreg.          | 2                                  | 4            | 113                        | 142          | 1            | 10           | -                 | -            | -                     | -            |
| Calif.         | 24                                 | 25           | 419                        | 519          | 87           | 139          | -                 | -            | -                     | -            |
| Alaska         | -                                  | -            | -                          | 9            | -            | 1            | -                 | -            | -                     | -            |
| Hawaii         | 1                                  | 1            | 7                          | 3            | -            | 1            | -                 | -            | -                     | 1            |
| Guam           | -                                  | -            | -                          | -            | -            | -            | U                 | -            | U                     | -            |
| P.R.           | -                                  | -            | 11                         | -            | 8            | 3            | -                 | -            | -                     | -            |
| V.I.           | -                                  | -            | -                          | -            | -            | -            | U                 | -            | U                     | -            |
| Amer. Samoa    | -                                  | -            | -                          | 1            | -            | -            | U                 | -            | U                     | -            |
| C.N.M.I.       | -                                  | -            | -                          | -            | -            | -            | U                 | -            | U                     | -            |

\*Of 17 cases among children aged <5 years, serotype was reported for 5 and of those, 1 was type B.

†For imported measles, cases include only those resulting from importation from other countries.

N: Not notifiable      U: Unavailable      -: no reported cases



**TABLE III. (Cont'd.) Cases of selected notifiable diseases preventable by vaccination, United States, weeks ending January 27, 1996, and January 28, 1995 (4th Week)**

| Reporting Area | Measles (Rubeola), cont'd. |           | Mumps |           |           | Pertussis |           |           | Rubella |           |           |
|----------------|----------------------------|-----------|-------|-----------|-----------|-----------|-----------|-----------|---------|-----------|-----------|
|                | Total                      |           |       |           |           |           |           |           |         |           |           |
|                | Cum. 1996                  | Cum. 1995 | 1996  | Cum. 1996 | Cum. 1995 | 1996      | Cum. 1996 | Cum. 1995 | 1996    | Cum. 1996 | Cum. 1995 |
| UNITED STATES  | 1                          | 20        | 5     | 29        | 53        | 17        | 45        | 188       | 2       | 11        | 6         |
| NEW ENGLAND    | -                          | 2         | -     | -         | -         | 4         | 7         | 10        | 2       | 2         | -         |
| Maine          | -                          | -         | -     | -         | -         | 1         | 1         | 5         | -       | -         | -         |
| N.H.           | -                          | -         | -     | -         | -         | 1         | 1         | -         | -       | -         | -         |
| Vt.            | -                          | -         | -     | -         | -         | -         | 1         | 2         | -       | -         | -         |
| Mass.          | -                          | -         | -     | -         | -         | 2         | 4         | 3         | -       | -         | -         |
| R.I.           | -                          | 2         | -     | -         | -         | -         | -         | -         | -       | -         | -         |
| Conn.          | -                          | -         | -     | -         | -         | -         | -         | -         | 2       | 2         | -         |
| MID. ATLANTIC  | -                          | -         | 1     | 1         | 2         | 3         | 3         | 8         | -       | -         | -         |
| Upstate N.Y.   | -                          | -         | 1     | 1         | 2         | 3         | 3         | 3         | -       | -         | -         |
| N.Y. City      | -                          | -         | -     | -         | -         | -         | -         | 3         | -       | -         | -         |
| N.J.           | -                          | -         | -     | -         | -         | -         | -         | 2         | -       | -         | -         |
| Pa.            | -                          | -         | -     | -         | -         | -         | -         | -         | -       | -         | -         |
| E.N. CENTRAL   | -                          | -         | 2     | 11        | 12        | -         | 4         | 17        | -       | -         | -         |
| Ohio           | -                          | -         | -     | 5         | 7         | -         | -         | 14        | -       | -         | -         |
| Ind.           | -                          | -         | -     | -         | -         | -         | -         | -         | -       | -         | -         |
| Ill.           | -                          | -         | -     | -         | -         | -         | -         | -         | -       | -         | -         |
| Mich.          | -                          | -         | 2     | 6         | 5         | -         | 4         | 2         | -       | -         | -         |
| Wis.           | -                          | -         | -     | -         | -         | -         | -         | 1         | -       | -         | -         |
| W.N. CENTRAL   | -                          | -         | 2     | 2         | 7         | -         | -         | 9         | -       | -         | -         |
| Minn.          | -                          | -         | -     | -         | -         | -         | -         | -         | -       | -         | -         |
| Iowa           | -                          | -         | -     | -         | 1         | -         | -         | 1         | -       | -         | -         |
| Mo.            | -                          | -         | -     | -         | 6         | -         | -         | 3         | -       | -         | -         |
| N. Dak.        | -                          | -         | 2     | 2         | -         | -         | -         | -         | -       | -         | -         |
| S. Dak.        | -                          | -         | -     | -         | -         | -         | -         | -         | -       | -         | -         |
| Nebr.          | -                          | -         | -     | -         | -         | -         | -         | -         | -       | -         | -         |
| Kans.          | -                          | -         | -     | -         | -         | -         | -         | 5         | -       | -         | -         |
| S. ATLANTIC    | -                          | -         | -     | 1         | 6         | 4         | 6         | 32        | -       | -         | -         |
| Del.           | -                          | -         | -     | -         | -         | -         | -         | 1         | -       | -         | -         |
| Md.            | -                          | -         | -     | -         | 1         | 4         | 4         | -         | -       | -         | -         |
| D.C.           | -                          | -         | -     | -         | -         | -         | -         | 1         | -       | -         | -         |
| Va.            | -                          | -         | -     | -         | 2         | -         | -         | -         | -       | -         | -         |
| W. Va.         | -                          | -         | -     | -         | -         | -         | -         | -         | -       | -         | -         |
| N.C.           | -                          | -         | -     | -         | 3         | -         | -         | 30        | -       | -         | -         |
| S.C.           | -                          | -         | -     | 1         | -         | -         | 1         | -         | -       | -         | -         |
| Ga.            | -                          | -         | -     | -         | -         | -         | 1         | -         | -       | -         | -         |
| Fla.           | -                          | -         | -     | -         | -         | -         | -         | -         | -       | -         | -         |
| E.S. CENTRAL   | -                          | -         | -     | 1         | 3         | -         | 1         | 1         | -       | -         | -         |
| Ky.            | -                          | -         | -     | -         | -         | -         | -         | -         | -       | -         | -         |
| Tenn.          | -                          | -         | -     | -         | -         | -         | -         | -         | -       | -         | -         |
| Ala.           | -                          | -         | -     | 1         | 2         | -         | 1         | 1         | -       | -         | -         |
| Miss.          | -                          | -         | -     | -         | 1         | -         | -         | -         | N       | N         | N         |
| W.S. CENTRAL   | -                          | -         | -     | 1         | 1         | -         | 1         | -         | -       | -         | -         |
| Ark.           | -                          | -         | -     | -         | 1         | -         | 1         | -         | -       | -         | -         |
| La.            | -                          | -         | -     | 1         | -         | -         | -         | -         | -       | -         | -         |
| Okla.          | -                          | -         | -     | -         | -         | -         | -         | -         | -       | -         | -         |
| Tex.           | -                          | -         | -     | -         | -         | -         | -         | -         | -       | -         | -         |
| MOUNTAIN       | -                          | 18        | -     | 6         | 2         | 3         | 10        | 92        | -       | -         | -         |
| Mont.          | -                          | -         | -     | -         | -         | -         | -         | 1         | -       | -         | -         |
| Idaho          | -                          | -         | -     | -         | -         | -         | -         | 32        | -       | -         | -         |
| Wyo.           | -                          | -         | -     | -         | -         | -         | -         | -         | -       | -         | -         |
| Colo.          | -                          | 15        | -     | -         | -         | -         | -         | 14        | -       | -         | -         |
| N. Mex.        | -                          | 3         | N     | N         | N         | 3         | 7         | 3         | -       | -         | -         |
| Ariz.          | -                          | -         | -     | -         | -         | -         | -         | 42        | -       | -         | -         |
| Utah           | -                          | -         | -     | -         | 1         | -         | -         | -         | -       | -         | -         |
| Nev.           | -                          | -         | U     | 6         | 1         | U         | 3         | -         | U       | -         | -         |
| PACIFIC        | 1                          | -         | -     | 6         | 20        | 3         | 13        | 19        | -       | 9         | 6         |
| Wash.          | -                          | -         | -     | -         | 1         | 1         | 1         | -         | -       | -         | -         |
| Oreg.          | -                          | -         | N     | N         | N         | 2         | 12        | -         | -       | -         | -         |
| Calif.         | -                          | -         | -     | 4         | 19        | -         | -         | 17        | -       | 9         | 6         |
| Alaska         | -                          | -         | -     | -         | -         | -         | -         | -         | -       | -         | -         |
| Hawaii         | 1                          | -         | -     | 2         | -         | -         | -         | 2         | -       | -         | -         |
| Guam           | -                          | -         | U     | -         | -         | U         | -         | -         | U       | -         | -         |
| P.R.           | -                          | -         | -     | -         | -         | -         | -         | -         | -       | -         | -         |
| V.I.           | -                          | -         | U     | -         | -         | U         | -         | -         | U       | -         | -         |
| Amer. Samoa    | -                          | -         | U     | -         | -         | U         | -         | -         | U       | -         | -         |
| C.N.M.I.       | -                          | -         | U     | -         | -         | U         | -         | -         | U       | -         | -         |

N: Not notifiable      U: Unavailable      -: no reported cases

**TABLE IV. Deaths in 121 U.S. cities,\* week ending  
January 27, 1996 (4th Week)**

| Reporting Area      | All Causes, By Age (Years) |       |       |       |      |     | P&I†  | Total | Reporting Area        | All Causes, By Age (Years) |       |       |       |      |    | P&I† | Total |
|---------------------|----------------------------|-------|-------|-------|------|-----|-------|-------|-----------------------|----------------------------|-------|-------|-------|------|----|------|-------|
|                     | All Ages                   | ≥65   | 45-64 | 25-44 | 1-24 | <1  |       |       |                       | All Ages                   | ≥65   | 45-64 | 25-44 | 1-24 | <1 |      |       |
| NEW ENGLAND         | 661                        | 481   | 114   | 43    | 14   | 9   | 33    |       | S. ATLANTIC           | 1,275                      | 824   | 249   | 151   | 31   | 20 | 82   |       |
| Boston, Mass.       | 190                        | 128   | 41    | 7     | 8    | 6   | 2     |       | Atlanta, Ga.          | 220                        | 139   | 44    | 29    | 3    | 5  | 7    |       |
| Bridgeport, Conn.   | 52                         | 37    | 13    | 1     | 1    | -   | -     |       | Baltimore, Md.        | 147                        | 84    | 38    | 17    | 5    | 3  | 19   |       |
| Cambridge, Mass.    | 23                         | 20    | 2     | 1     | -    | -   | 2     |       | Charlotte, N.C.       | 54                         | 41    | 5     | 6     | 2    | -  | 2    |       |
| Fall River, Mass.   | 21                         | 16    | 4     | 1     | -    | -   | 1     |       | Jacksonville, Fla.    | 175                        | 118   | 35    | 15    | 4    | 3  | 12   |       |
| Hartford, Conn.     | 53                         | 34    | 12    | 5     | 1    | 1   | 1     |       | Miami, Fla.           | 115                        | 68    | 25    | 20    | 2    | -  | -    |       |
| Lowell, Mass.       | 32                         | 19    | 9     | 4     | -    | -   | 4     |       | Norfolk, Va.          | 72                         | 40    | 19    | 8     | 4    | 1  | 5    |       |
| Lynn, Mass.         | 13                         | 11    | 2     | -     | -    | -   | 1     |       | Richmond, Va.         | U                          | U     | U     | U     | U    | U  | U    |       |
| New Bedford, Mass.  | 25                         | 21    | 1     | 2     | 1    | -   | 3     |       | Savannah, Ga.         | 84                         | 61    | 12    | 9     | 2    | -  | 8    |       |
| New Haven, Conn.    | 34                         | 22    | 6     | 5     | 1    | -   | -     |       | St. Petersburg, Fla.  | 73                         | 56    | 12    | 3     | -    | 2  | 1    |       |
| Providence, R.I.    | 50                         | 41    | 6     | 3     | -    | -   | 3     |       | Tampa, Fla.           | 174                        | 123   | 29    | 16    | 3    | 3  | 23   |       |
| Somerville, Mass.   | 8                          | 6     | 1     | 1     | -    | -   | -     |       | Washington, D.C.      | 149                        | 86    | 26    | 28    | 6    | 3  | 5    |       |
| Springfield, Mass.  | 39                         | 31    | 1     | 6     | -    | 1   | 4     |       | Wilmington, Del.      | 12                         | 8     | 4     | -     | -    | -  | -    |       |
| Waterbury, Conn.    | 52                         | 43    | 7     | 2     | -    | -   | 7     |       |                       |                            |       |       |       |      |    |      |       |
| Worcester, Mass.    | 69                         | 52    | 9     | 5     | 2    | 1   | 5     |       | E.S. CENTRAL          | 1,085                      | 735   | 212   | 94    | 26   | 16 | 72   |       |
| MID. ATLANTIC       | 2,772                      | 1,834 | 521   | 312   | 44   | 61  | 186   |       | Birmingham, Ala.      | 168                        | 98    | 43    | 15    | 5    | 5  | 9    |       |
| Albany, N.Y.        | 56                         | 43    | 4     | 4     | -    | 5   | 6     |       | Chattanooga, Tenn.    | 111                        | 76    | 22    | 9     | 2    | 2  | 8    |       |
| Allentown, Pa.      | 17                         | 17    | -     | -     | -    | -   | -     |       | Knoxville, Tenn.      | 103                        | 67    | 19    | 11    | 2    | 4  | 12   |       |
| Buffalo, N.Y.       | 79                         | 63    | 9     | 4     | 2    | 1   | 2     |       | Lexington, Ky.        | 64                         | 45    | 14    | 5     | -    | -  | 6    |       |
| Camden, N.J.        | 32                         | 21    | 7     | 2     | 1    | 1   | 2     |       | Memphis, Tenn.        | 255                        | 176   | 46    | 27    | 6    | -  | -    |       |
| Elizabeth, N.J.     | 25                         | 17    | 7     | 1     | -    | -   | 1     |       | Mobile, Ala.          | 118                        | 93    | 12    | 8     | 3    | 2  | 15   |       |
| Erie, Pa.‡          | 48                         | 32    | 10    | 5     | 1    | -   | 6     |       | Montgomery, Ala.      | 82                         | 60    | 16    | 4     | 1    | 1  | 6    |       |
| Jersey City, N.J.   | 45                         | 34    | 8     | 3     | -    | -   | 3     |       | Nashville, Tenn.      | 184                        | 120   | 40    | 15    | 7    | 2  | 16   |       |
| New York City, N.Y. | 1,458                      | 924   | 293   | 182   | 24   | 35  | 73    |       | W.S. CENTRAL          | 1,863                      | 1,271 | 308   | 187   | 53   | 43 | 142  |       |
| Newark, N.J.        | 80                         | 36    | 14    | 21    | 3    | 6   | 7     |       | Austin, Tex.          | 110                        | 68    | 22    | 16    | 2    | 2  | 13   |       |
| Paterson, N.J.      | 36                         | 17    | 12    | 6     | 1    | -   | -     |       | Baton Rouge, La.      | 58                         | 34    | 11    | 8     | 5    | -  | 1    |       |
| Philadelphia, Pa.   | 400                        | 256   | 81    | 47    | 9    | 7   | 23    |       | Corpus Christi, Tex.  | 97                         | 76    | 13    | 4     | -    | 4  | 5    |       |
| Pittsburgh, Pa.§    | 77                         | 52    | 12    | 9     | 2    | 2   | 8     |       | Dallas, Tex.          | 245                        | 153   | 46    | 29    | 14   | 3  | 6    |       |
| Reading, Pa.        | 21                         | 15    | 2     | 3     | -    | 1   | 6     |       | El Paso, Tex.         | 114                        | 93    | 12    | 6     | 1    | 2  | 8    |       |
| Rochester, N.Y.     | 123                        | 90    | 23    | 8     | 1    | 1   | 17    |       | Ft. Worth, Tex.       | 171                        | 108   | 34    | 16    | 8    | 5  | 24   |       |
| Schenectady, N.Y.   | 30                         | 23    | 4     | 3     | -    | -   | 3     |       | Houston, Tex.         | 483                        | 306   | 87    | 64    | 11   | 14 | 49   |       |
| Scranton, Pa.§      | 39                         | 30    | 6     | 3     | -    | -   | 4     |       | Little Rock, Ark.     | 86                         | 62    | 11    | 8     | 2    | 3  | 2    |       |
| Syracuse, N.Y.      | 108                        | 86    | 19    | 2     | -    | 1   | 13    |       | New Orleans, La.      | U                          | U     | U     | U     | U    | U  | U    |       |
| Trenton, N.J.       | 55                         | 41    | 6     | 7     | -    | 1   | 7     |       | San Antonio, Tex.     | 282                        | 213   | 38    | 23    | 3    | 5  | 15   |       |
| Utica, N.Y.         | 21                         | 18    | 2     | 1     | -    | -   | 1     |       | Shreveport, La.       | 70                         | 48    | 14    | 3     | 4    | 1  | 6    |       |
| Yonkers, N.Y.       | 22                         | 19    | 2     | 1     | -    | -   | 4     |       | Tulsa, Okla.          | 147                        | 110   | 20    | 10    | 3    | 4  | 13   |       |
| E.N. CENTRAL        | 2,124                      | 1,417 | 392   | 184   | 61   | 69  | 151   |       | MOUNTAIN              | 1,006                      | 684   | 167   | 99    | 33   | 23 | 99   |       |
| Akron, Ohio         | 71                         | 55    | 13    | 2     | 1    | -   | -     |       | Albuquerque, N.M.     | 125                        | 79    | 23    | 19    | 3    | 1  | 3    |       |
| Canton, Ohio        | 43                         | 38    | 2     | -     | 2    | 1   | 4     |       | Colo. Springs, Colo.  | 59                         | 39    | 11    | 4     | 3    | 2  | 5    |       |
| Chicago, Ill.       | 529                        | 295   | 109   | 73    | 15   | 36  | 48    |       | Denver, Colo.         | 116                        | 70    | 23    | 19    | 1    | 3  | 12   |       |
| Cincinnati, Ohio    | 61                         | 43    | 12    | 2     | 2    | 2   | 6     |       | Las Vegas, Nev.       | 169                        | 112   | 36    | 16    | 4    | 1  | 16   |       |
| Cleveland, Ohio     | 166                        | 103   | 32    | 19    | 6    | 6   | 5     |       | Ogden, Utah           | 24                         | 18    | 3     | -     | 2    | 1  | 3    |       |
| Columbus, Ohio      | 175                        | 130   | 22    | 13    | 3    | 7   | 15    |       | Phoenix, Ariz.        | 234                        | 168   | 26    | 23    | 11   | 6  | 31   |       |
| Dayton, Ohio        | 152                        | 112   | 28    | 11    | 1    | -   | 4     |       | Pueblo, Colo.         | 29                         | 24    | 3     | -     | 1    | 1  | 2    |       |
| Detroit, Mich.      | 258                        | 157   | 54    | 30    | 11   | 6   | 6     |       | Salt Lake City, Utah  | 96                         | 56    | 20    | 12    | 2    | 6  | 9    |       |
| Evansville, Ind.    | 56                         | 43    | 11    | 1     | -    | 1   | 3     |       | Tucson, Ariz.         | 154                        | 118   | 22    | 6     | 6    | 2  | 18   |       |
| Fort Wayne, Ind.    | 58                         | 46    | 9     | 2     | 1    | -   | 4     |       | PACIFIC               | 1,576                      | 1,123 | 259   | 120   | 38   | 34 | 196  |       |
| Gary, Ind.          | 8                          | 4     | 3     | -     | 1    | -   | 1     |       | Berkeley, Calif.      | 20                         | 13    | 4     | 2     | -    | 1  | 4    |       |
| Grand Rapids, Mich. | 64                         | 42    | 9     | 5     | 2    | 6   | 11    |       | Fresno, Calif.        | 107                        | 68    | 17    | 8     | 7    | 6  | 16   |       |
| Indianapolis, Ind.  | U                          | U     | U     | U     | U    | U   | U     |       | Glendale, Calif.      | U                          | U     | U     | U     | U    | U  | U    |       |
| Madison, Wis.       | 52                         | 33    | 11    | 6     | -    | 2   | 4     |       | Honolulu, Hawaii      | 93                         | 72    | 16    | 3     | -    | 1  | 11   |       |
| Milwaukee, Wis.     | 167                        | 122   | 36    | 8     | 1    | -   | 15    |       | Long Beach, Calif.    | 91                         | 73    | 8     | 5     | 4    | 1  | 10   |       |
| Peoria, Ill.        | 38                         | 26    | 6     | -     | 5    | 1   | 5     |       | Los Angeles, Calif.   | U                          | U     | U     | U     | U    | U  | U    |       |
| Rockford, Ill.      | 53                         | 40    | 8     | 4     | 1    | -   | 5     |       | Pasadena, Calif.      | U                          | U     | U     | U     | U    | U  | U    |       |
| South Bend, Ind.    | 37                         | 27    | 4     | -     | 5    | 1   | 4     |       | Portland, Ore.        | 151                        | 101   | 24    | 17    | 7    | 2  | 17   |       |
| Toledo, Ohio        | 136                        | 101   | 23    | 8     | 4    | -   | 11    |       | Sacramento, Calif.    | 183                        | 132   | 37    | 7     | 3    | 4  | 36   |       |
| Youngstown, Ohio    | U                          | U     | U     | U     | U    | U   | U     |       | San Diego, Calif.     | 219                        | 162   | 24    | 25    | 3    | 5  | 44   |       |
| W.N. CENTRAL        | 799                        | 588   | 133   | 38    | 17   | 23  | 65    |       | San Francisco, Calif. | 146                        | 88    | 33    | 21    | 1    | 3  | 14   |       |
| Des Moines, Iowa    | U                          | U     | U     | U     | U    | U   | U     |       | San Jose, Calif.      | 209                        | 158   | 29    | 12    | 7    | 3  | 24   |       |
| Duluth, Minn.       | 39                         | 31    | 7     | 1     | -    | -   | 6     |       | Santa Cruz, Calif.    | 32                         | 28    | 2     | 1     | 1    | -  | 6    |       |
| Kansas City, Kans.  | 52                         | 35    | 14    | 2     | -    | 1   | 4     |       | Seattle, Wash.        | 162                        | 114   | 31    | 12    | 4    | 1  | 4    |       |
| Kansas City, Mo.    | U                          | U     | U     | U     | U    | U   | U     |       | Spokane, Wash.        | 67                         | 45    | 15    | 4     | 1    | 2  | 4    |       |
| Lincoln, Nebr.      | 32                         | 21    | 7     | 1     | 1    | 2   | 1     |       | Tacoma, Wash.         | 96                         | 69    | 19    | 3     | -    | 5  | 6    |       |
| Minneapolis, Minn.  | 296                        | 225   | 48    | 12    | 5    | 6   | 28    |       |                       |                            |       |       |       |      |    |      |       |
| Omaha, Nebr.        | 104                        | 77    | 16    | 1     | 4    | 6   | 9     |       |                       |                            |       |       |       |      |    |      |       |
| St. Louis, Mo.      | 118                        | 83    | 14    | 13    | 3    | 5   | 14    |       |                       |                            |       |       |       |      |    |      |       |
| St. Paul, Minn.     | 69                         | 53    | 11    | 3     | 2    | -   | 2     |       |                       |                            |       |       |       |      |    |      |       |
| Wichita, Kans.      | 89                         | 63    | 16    | 5     | 2    | 3   | 1     |       |                       |                            |       |       |       |      |    |      |       |
| TOTAL               | 13,161¶                    | 8,957 | 2,355 | 1,228 | 317  | 298 | 1,026 |       |                       |                            |       |       |       |      |    |      |       |

\*Mortality data in this table are voluntarily reported from 121 cities in the United States, most of which have populations of 100,000 or more. A death is reported by the place of its occurrence and by the week that the death certificate was filed. Fetal deaths are not included.

†Pneumonia and influenza.

§Because of changes in reporting methods in these 3 Pennsylvania cities, these numbers are partial counts for the current week. Complete counts will be available in 4 to 6 weeks.

¶Total includes unknown ages.

U: Unavailable - : no reported cases

## Monthly Immunization Table

To track progress toward achieving the goals of the Childhood Immunization Initiative (CII), CDC publishes monthly a tabular summary of the number of cases of all diseases preventable by routine childhood vaccination reported during the previous month and year-to-date (provisional data). In addition, the table compares provisional data with final data for the previous year and highlights the number of reported cases among children aged <5 years, who are the primary focus of CII. Data in the table are reported through the National Electronic Telecommunications System for Surveillance (NETSS).

### Number of reported cases of diseases preventable by routine childhood vaccination — United States, December 1994 and 1994–1995\*

| Disease                         | No. cases,<br>December<br>1995 | Total cases<br>January–December |        | No. cases among<br>children aged <5 years† |       |
|---------------------------------|--------------------------------|---------------------------------|--------|--|-------|
|                                 |                                | 1994                            | 1995   | 1994                                       | 1995  |
| Congenital rubella syndrome     | 1                              | 7                               | 7      | 7  | 6     |
| Diphtheria                      | 0                              | 2                               | 0      | 1  | 0     |
| <i>Haemophilus influenzae</i> § | 99                             | 1,174                           | 1,176  | 329  | 271   |
| Hepatitis B¶                    | 1196                           | 12,517                          | 10,176 | 128  | 81    |
| Measles                         | 8                              | 963                             | 294    | 246  | 107   |
| Mumps                           | 85                             | 1,537                           | 850    | 250  | 153   |
| Pertussis                       | 611                            | 4,617                           | 4,509  | 2,477                                      | 2,445 |
| Poliomyelitis, paralytic**      | 0                              | 1                               | 0      | 1  | 0     |
| Rubella                         | 7                              | 227                             | 149    | 28   | 19    |
| Tetanus                         | 6                              | 51                              | 37     | 0  | 2     |

\* Data for 1994 are final, and for 1995 are provisional.

† For 1994 and 1995, age data were available for ≥93% cases.

§ Invasive disease; *H. influenzae* serotype is not routinely reported to the National Notifiable Diseases Surveillance System. Of 271 cases among children aged <5 years, serotype was reported for 63 cases, and of those, 38 were type b, the only serotype of *H. influenzae* preventable by vaccination.

¶ Because most hepatitis B virus infections among infants and children aged <5 years are asymptomatic (although likely to become chronic), acute disease surveillance does not reflect the incidence of this problem in this age group or the effectiveness of hepatitis B vaccination in infants.

\*\* One case with onset in July 1994 has been confirmed; this case was vaccine-associated. An additional six suspected cases are under investigation. In 1993, three of 10 suspected cases were confirmed; two of the confirmed cases were vaccine-associated, and one was imported. The imported case occurred in a 2-year-old Nigerian child brought to the United States for care of his paralytic illness; no poliovirus was isolated from the child.

The *Morbidity and Mortality Weekly Report (MMWR)* Series is prepared by the Centers for Disease Control and Prevention (CDC) and is available free of charge in electronic format and on a paid subscription basis for paper copy. To receive an electronic copy on Friday of each week, send an e-mail message to [lists@list.cdc.gov](mailto:lists@list.cdc.gov). The body content should read *subscribe mmwr-toc*. Electronic copy also is available from CDC's World-Wide Web server at <http://www.cdc.gov/> or from CDC's file transfer protocol server at <ftp.cdc.gov>. To subscribe for paper copy, contact Superintendent of Documents, U.S. Government Printing Office, Washington, DC 20402; telephone (202) 512-1800.

Data in the weekly *MMWR* are provisional, based on weekly reports to CDC by state health departments. The reporting week concludes at close of business on Friday; compiled data on a national basis are officially released to the public on the following Friday. Address inquiries about the *MMWR* Series, including material to be considered for publication, to: Editor, *MMWR* Series, Mailstop C-08, CDC, 1600 Clifton Rd., N.E., Atlanta, GA 30333; telephone (404) 332-4555.

All material in the *MMWR* Series is in the public domain and may be used and reprinted without permission; citation as to source, however, is appreciated.

Director, Centers for Disease Control  
and Prevention  
David Satcher, M.D., Ph.D.  
Deputy Director, Centers for Disease Control  
and Prevention  
Claire V. Broome, M.D.  
Director, Epidemiology Program Office  
Stephen B. Thacker, M.D., M.Sc.

Editor, *MMWR* Series  
Richard A. Goodman, M.D., M.P.H.  
Managing Editor, *MMWR* (weekly)  
Karen L. Foster, M.A.  
Writers-Editors, *MMWR* (weekly)  
David C. Johnson  
Darlene D. Rumph-Person  
Caran R. Wilbanks

☆ U.S. Government Printing Office: 1996-733-175/27037 Region IV