



---

# MMWR<sup>TM</sup>

## Morbidity and Mortality Weekly Report

---

Surveillance Summaries

November 25, 2005 / Vol. 54 / No. SS-7

---

### Abortion Surveillance — United States, 2002

The *MMWR* series of publications is published by the Coordinating Center for Health Information and Service, Centers for Disease Control and Prevention (CDC), U.S. Department of Health and Human Services, Atlanta, GA 30333.

**SUGGESTED CITATION**

General: Centers for Disease Control and Prevention. Abortion surveillance — United States, 2002. In: Surveillance Summaries, November 25, 2005. *MMWR* 2005; 54(No. SS-7).

Specific: [Author(s)]. [Title of particular article]. In: Surveillance Summaries, November 25, 2005. *MMWR* 2005; 54(No. SS-7):[inclusive page numbers].

**Centers for Disease Control and Prevention**

Julie L. Gerberding, MD, MPH  
*Director*

Dixie E. Snider, MD, MPH  
*Chief Science Officer*

Tanja Popovic, MD, PhD  
*Associate Director for Science*

**Coordinating Center for Health Information and Service**

Steven L. Solomon, MD  
*Director*

**National Center for Health Marketing**

Jay M. Bernhardt, PhD, MPH  
*Director*

**Division of Scientific Communications**

Maria S. Parker  
*(Acting) Director*

Mary Lou Lindegren, MD  
*Editor, MMWR Series*

Suzanne M. Hewitt, MPA  
*Managing Editor, MMWR Series*

Teresa F. Rutledge  
*(Acting) Lead Technical Writer-Editor*

Patricia A. McGee  
*Project Editor*

Beverly J. Holland  
*Lead Visual Information Specialist*

Lynda G. Cupell  
Malbea A. LaPete  
*Visual Information Specialists*

Quang M. Doan, MBA  
Erica R. Shaver  
*Information Technology Specialists*

**CONTENTS**

Introduction ..... 1

Methods ..... 2

Results ..... 3

Discussion ..... 5

Limitations ..... 7

Public Health Actions ..... 8

Acknowledgments ..... 8

References ..... 8

## Abortion Surveillance — United States, 2002

Lilo T. Strauss, MA, Joy Herndon, MS, Jeani Chang, MPH, Wilda Y. Parker  
Sonya V. Bowens, MS, Cynthia J. Berg, MD  
*Division of Reproductive Health*  
*National Center for Chronic Disease Prevention and Health Promotion*

### Abstract

**Problem/Condition:** CDC began abortion surveillance in 1969 to document the number and characteristics of women obtaining legal induced abortions.

**Reporting Period Covered:** This report summarizes and describes data voluntarily reported to CDC regarding legal induced abortions obtained in the United States in 2002.

**Description of System:** For each year since 1969, CDC has compiled abortion data by state or area of occurrence. During 1973–1997, data were received from or estimated for 52 reporting areas in the United States: 50 states, the District of Columbia, and New York City. In 1998 and 1999, CDC compiled abortion data from 48 reporting areas. Alaska, California, New Hampshire, and Oklahoma did not report, and data for these states were not estimated. For 2000–2002, Oklahoma again reported these data, increasing the number of reporting areas to 49.

**Results:** A total of 854,122 legal induced abortions were reported to CDC for 2002 from 49 reporting areas, representing a 0.1% increase from the 853,485 legal induced abortions reported by the same 49 reporting areas for 2001. The abortion ratio, defined as the number of abortions per 1,000 live births, was 246 in 2002, the same as reported for 2001. The abortion rate was 16 per 1,000 women aged 15–44 years for 2002, the same as for 2001. For the same 48 reporting areas, the abortion rate remained relatively constant during 1997–2002.

The highest percentages of reported abortions were for women who were unmarried (82%), white (55%), and aged <25 years (51%). Of all abortions for which gestational age was reported, 60% were performed at ≤8 weeks' gestation and 88% at <13 weeks. From 1992 (when detailed data regarding early abortions were first collected) through 2002, steady increases have occurred in the percentage of abortions performed at ≤6 weeks' gestation. A limited number of abortions was obtained at >15 weeks' gestation, including 4.1% at 16–20 weeks and 1.4% at ≥21 weeks. A total of 35 reporting areas submitted data stating that they performed and enumerated medical (nonsurgical) procedures, accounting for 5.2% of all known reported procedures from the 45 areas with adequate reporting on type of procedure.

**Interpretation:** During 1990–1997, the number of legal induced abortions gradually declined. When the same 48 reporting areas were compared, the number of abortions decreased during 1996–2001, then slightly increased in 2002. In 2000 and 2001, even with one additional reporting state, the number of abortions declined slightly, with a minimal increase in 2002.

**Public Health Action:** Abortion surveillance in the United States continues to provide the data necessary for examining trends in numbers and characteristics of women who obtain legal induced abortions and to increase understanding of this pregnancy outcome. Policymakers and program planners use these data to improve the health and well-being of women and infants.

### Introduction

CDC began conducting abortion surveillance in 1969 to document the number and characteristics of women obtaining legal induced abortions and to monitor this outcome of unintended pregnancies. This report is based on abortion data for 2002 provided voluntarily to CDC's National Center for Chronic Disease Prevention and Health Promotion (NCCDPHP), Division of Reproductive Health.

The material in this report originated in the National Center for Chronic Disease Prevention and Health Promotion, Janet Collins, PhD, Director; and the Division of Reproductive Health, John Lehnerr, Acting Director.  
**Corresponding address:** CDC/National Center for Chronic Disease Prevention and Health Promotion/Division of Reproductive Health, 1600 Clifton Rd., NE, MS K-21, Atlanta, GA 30333; E-mail: cdcinfo@cdc.gov.

## Methods

For 2002, CDC compiled data that were voluntarily provided from 49 reporting areas in the United States: 47 states (excluding Alaska, California, and New Hampshire), the District of Columbia (DC), and New York City (NYC). Legal induced abortion was defined as a procedure, performed by a licensed physician or someone acting under the supervision of a licensed physician, that was intended to terminate a suspected or known intrauterine pregnancy and to produce a nonviable fetus at any gestational age (1,2). The total number of legal induced abortions was available from all reporting areas; however, not all of these areas collected data on some or all characteristics of women who obtained abortions, and the availability of such data varied by reporting area.

Data on the age of women who obtained abortions were collected and reported adequately (i.e., categorized in accordance with surveillance variables and with <15% unknown values) in 48 reporting areas (46 states, DC, and NYC), representing 89% of all reported procedures, whereas data on ethnicity were collected and reported adequately in only 29 reporting areas, representing 58% of all reported procedures. The findings in this report reflect characteristics of women only from reporting areas that submitted adequate data for the characteristics being examined. For the majority of state tables, the percentage data include a category for unknown values, and the percentage known to be in each category is actually a slight understatement of the true percentage in that category. However, for trend data, out-of-area residents, adolescent ages, and two-characteristics tables, percentages presented are based on known values only.

For the 49 reporting areas, data concerning the number of women obtaining legal induced abortions were provided by the central health agency.\* These agencies provided data on numbers of abortions and characteristics of women obtaining abortions by the reporting area in which the abortion was performed (i.e., state of occurrence). For the majority of reporting areas, abortion totals were also available by the woman's state or area of residence. However, three states (Delaware, Maryland, and Wisconsin) reported characteristics only for residents who obtained abortions in the state but not for women from out-of-state; and one state (Iowa) provided numbers and characteristics only for state residents. Two states (Florida and Louisiana) did not report abortion totals by resident status, and two states (Arizona and Massachusetts) provided only the total num-

ber of abortions for out-of-state residents without specifying individual states or areas of residence.

This report provides overall and state-specific abortion statistics. For all characteristics for which birth or population data were available, abortion ratios (number of abortions per 1,000 live births) or abortion rates (number of abortions per 1,000 women in a given age group) are provided. Beginning with 1996 data, abortion ratios were calculated by using the number of live births to residents of each area from birth data reported to CDC's National Center for Health Statistics (NCHS); these numbers were previously received from state health departments. The population data used for calculating most recent abortion rates were obtained from the U.S. Census Bureau postcensal data (3).

Women aged 20–44 years who obtained legal induced abortions were categorized by 5-year age groups, and adolescents aged 15–19 years were categorized by single years of age. Abortion numbers, ratios, and rates are presented by age group. Because 94% of abortions among adolescents aged <15 years occurred among those aged 13–14 years in 1988 (the latest year for which this information is known) (4), the population of adolescents aged 13–14 years was used as the denominator for calculating abortion rates for adolescents aged <15 years. Rates for women aged  $\geq 40$  years were based on the number of women aged 40–44 years. However, rates for all females who obtained abortions were based on the population of females aged 15–44 years.

Race was categorized by three groups: white, black, and all other races. Other races included Asian or Pacific Islander, American Indian, Alaska Native, and women classified as "other" race. Ethnicity was categorized as either Hispanic or non-Hispanic. As in previous reports, race and ethnicity were provided as separate variables, and abortions were not cross-classified by race and ethnicity. Abortion numbers, ratios, and rates are presented by both race and ethnicity.

Marital status was reported as either married (including women who were married or separated) or unmarried (including those who were never married, widowed, or divorced). Abortion numbers and ratios are presented by marital status.

Gestational age (in weeks) at the time of abortion was categorized as  $\leq 6$ , 7, 8 and  $\leq 8$ , 9–10, 11–12, 13–15, 16–20, and  $\geq 21$ . Weeks of gestation were estimated in 11 reporting areas as the time elapsed since the woman's most recent menstrual period. For 27 other states, gestational age was reported on the basis of the physician's estimate (data from the clinical examination, including ultrasound

\* Includes state, DC, and NYC health departments.

results). For the remaining six states, gestational age was derived from a combination of the physician's estimates and the time elapsed since the woman's most recent menstrual period. Of the 44 areas that reported adequate data on weeks of gestation at the time of abortion, 42 also reported abortions performed at  $\leq 8$  weeks' gestation separately for those performed at  $\leq 6$ , 7, and 8 weeks' gestation. Abortion numbers are presented by gestational age.

The type of abortion procedure was categorized as curettage (including suction and/or sharp curettage at any gestational age); intrauterine instillation; medical (nonsurgical) abortion (methotrexate and misoprostol or mifepristone and misoprostol were reported for abortions performed at  $\leq 8$  weeks' gestation; vaginal prostaglandins were primarily reported for abortions performed at later weeks of gestation); and procedures described as other (including hysterectomy and hysterotomy).

## Results

Overall, the annual number of legal induced abortions in the United States increased gradually from 1973 until it peaked in 1990, and it generally declined thereafter (Figure 1). In 2002, a total of 854,122 legal induced abortions were reported to CDC by 49 reporting areas. This change represents a 0.1% increase from 2001, for which the same 49 areas reported 853,485 legal induced abortions (Tables 1 and 2).

The national legal induced abortion ratio increased from 196 per 1,000 live births in 1973 (the first year that 52 areas reported) to 358 per 1,000 in 1979 and remained nearly stable through 1981 (Figure 1; Table 2). The ratio peaked at 364 per 1,000 in 1984 and since then has demonstrated a generally steady decline. In 2002, the abortion ratio was 246 per 1,000 in 49 reporting areas (the same as in 2001) and 248 for the same 48 reporting areas for which data were available since 1998 (Table 2).

The national legal induced abortion rate increased from 14 per 1,000 women aged 15–44 years in 1973 to 25 per 1,000 in 1980. The rate remained stable, at 23–24 per 1,000 during the 1980s and early 1990s and at 20–21 per 1,000 during 1994–1997. The abortion rate remained unchanged at 17 per 1,000 during 1997–1999 in the same 48 reporting areas. In 2002, the abortion rate remained unchanged since 2000 at 16 per 1,000, both overall and in the same 48 reporting areas as 1999.

The numbers, ratios, and rates of reported legal induced abortions are presented by area of residence and by area of occurrence (Table 3). In 2002, the highest number of reported legal induced abortions occurred in NYC (91,800),

Florida (87,964), and Texas (79,929); the fewest<sup>†</sup> occurred in South Dakota (826), Idaho (829), and North Dakota (1,219) (Table 3). The abortion ratios by state or area of occurrence ranged from 40 per 1,000 live births in Idaho to 776 per 1,000 in NYC. Among women aged 15–44 years, the rates by occurrence ranged from 3 per 1,000 women in Idaho to 39 per 1,000 in DC. These ratios and rates should be viewed with consideration of the sizable variation by state in the percentage of abortions obtained by out-of-state residents. In 2002, approximately 9% of reported abortions were obtained by out-of-state residents (range: from 0.3% [in Hawaii] to 56% [in DC]) (Table 3). Data by state of residence are incomplete because three states (Alaska, California, and New Hampshire) did not report any data on abortion, and five states (Arizona, Florida, Iowa, Louisiana, and Massachusetts) did not provide data concerning the residence status of all women obtaining abortions in their state. Thus, ratios and rates by state of residence should be viewed with caution because of the substantial variation in completeness of reporting of residence information.

Women known to be aged 20–24 years obtained 33% of all abortions for which age was adequately reported. Adolescents known to be aged  $<15$  years obtained  $<1.0\%$  of all abortions in the 48 areas that reported age. Among the 48 reporting areas, age was not reported for 0.9% of patients; however, this percentage ranged from 0.0% (in 19 areas) to 5.6% (Arizona) (Table 4). Abortion ratios were highest for adolescents aged  $<15$  years (753 per 1,000 live births) and lowest for women aged 30–34 years (148 per 1,000) (Figure 2) (Table 4). In contrast to abortion ratios, among females for whom age was reported, abortion rates were highest for women aged 20–24 years (31 per 1,000 women) and lowest for females at the extremes of reproductive age (1 per 1,000 adolescents aged 13–14 years and 3 per 1,000 women aged 40–44 years) (Table 4). Among women aged  $<20$  years (46 reporting areas), the percentage of abortions obtained increased with age (Table 5); the abortion ratio was highest for adolescents aged  $<15$  years<sup>§</sup> (746 per 1,000 live births) and lowest for women aged 19 years (322 per 1,000). Conversely, the rates of abortions were lowest (1 per 1,000) for adolescents aged  $<15$  years and highest (28 per 1,000) for women aged 19 years) (Table 5).

<sup>†</sup> Wyoming reported four abortions that occurred in 2001. As a result of the small number and because computing abortion ratios and rates for such a limited number is not appropriate, Wyoming was not included in this sequence in the text.

<sup>§</sup> Ratios for adolescents aged  $<15$  years differ in Tables 4 and 5 because a different number of areas reported; Table 4 includes 48 reporting areas, and Table 5 includes 46.



Abortion trends by age indicate that since 1973, abortion ratios have been higher for adolescents aged <15 years than for any other age group (Figure 3). For females aged  $\leq 19$  years and those aged  $\geq 40$  years, the abortion ratio generally increased from 1974 through the early 1980s and declined thereafter (Figure 3). The abortion ratio for women aged 20–34 years (those with the highest fertility rates) (5) has declined slightly since the mid-1980s. The abortion ratio for women aged 35–39 years has declined gradually over time.

In 2002, for women from areas where weeks of gestation at the time of abortion were adequately reported (44 reporting areas), 59% of reported legal induced abortions were known to have been obtained at  $\leq 8$  weeks' gestation and 87% at <13 weeks (Table 6). Overall (42 reporting areas), 27% of abortions were known to have been performed at  $\leq 6$  weeks' gestation, 17% at 7 weeks, and 15% at 8 weeks (Table 7). Few reported abortions occurred after 15 weeks' gestation: 4.0% at 16–20 weeks and 1.4% at  $\geq 21$  weeks.

For women whose type of procedure was adequately reported, 91% of abortions were known to have been performed by curettage (which includes dilatation and evacuation [D&E]) and 0.8% by intrauterine instillation (Table 8). Hysterectomy and hysterotomy were included in the "other" procedure category and were known to have been used in <0.01% of all abortions. Thirty-four reporting areas submitted information regarding performance of medical (nonsurgical) procedures,<sup>§</sup> hereafter referred to as medical abortions. Known medical abortions account for approximately 5% of all procedures reported from the 45 areas with adequate reporting on type of procedure. In addition, three areas that did not collect data separately for medical abortions on their abortion reporting form included medical abortions in the "other" category. For the 34 areas that reported medical abortions separately, 36,297 medical abortion procedures were performed in 2002. (Five states reported that no medical abortions were performed in 2002 but did not specify whether such abortions were available.) For the 31 states that reported one or more medical abortion for both 2002 and 2001, the data reflect an increase of 77%, from 20,057 in 2001 to 35,440 in 2002 (6). The extent to which the 36,297 medical abortions reported to CDC for 2002 represent the use of this procedure in all reporting areas is unknown.

In the 37 reporting areas for which race was provided classified according to the same categories used in previous

years, approximately 54% of women who obtained legal induced abortions were known to be white, 36% black, and 8% other; for 3%, race was not known (Table 9). The abortion ratio for black women (495 per 1,000 live births) was 3.0 times the ratio for white women (164 per 1,000), and the ratio for women of the nonhomogeneous "other" race category (357 per 1,000) was 2.2 times the ratio for white women. The abortion rate for black women (29 per 1,000 women) was 3.0 times the rate for white women (10 per 1,000), whereas the abortion rate for women of other races (20 per 1,000 women) was 2.1 times the rate for white women.

Reporting areas provide data voluntarily and thus are not required to use the 31 race/ethnicity categories mandated by the Office of Management and Budget (OMB) for federally funded data collection. Although attempts were made for the 2001 abortion report, *Abortion Surveillance—United States, 2001* (6), to collect data cross-classified by race and ethnicity in these categories, only 39% of all reported abortions could be included, and the mandated "two or more race categories" included only five nonzero values. Moreover, an examination of the states' Induced Termination of Pregnancy (ITOP) forms revealed that only two states offered an option of reporting two or more races, and only one state actually had a nonzero value. Thus, although providing data cross-classified by race and ethnicity would be helpful, the decision was made that attempts to collect these data in the future would not continue unless a substantial number of states change their race/ethnicity questions in this direction.

Twenty-nine reporting areas had separate and adequate data\*\* on the ethnicity of women who obtained legal induced abortions (Table 10). The percentage of abortions known to have been obtained by Hispanic women in these reporting areas was 18% overall (range: from <0.6% [in Kentucky and West Virginia] to 49% [in New Mexico]). For Hispanic women in these reporting areas, the abortion ratio was 233 per 1,000 live births, and the abortion rate was 17 per 1,000 women. However, only 43% of Hispanic women in the United States lived in these reporting areas.

For women whose marital status was adequately reported (39 reporting areas), 80% of women who obtained abortions were known to be unmarried (Table 11). The abortion ratio for unmarried women (570 per 1,000 live births) was 8.8 times that for married women (65 per 1,000).

For women who obtained legal induced abortions and for whom data on previous live births were adequately re-

<sup>§</sup> Medical (nonsurgical) abortion procedures involve the administration of a medication or medications to induce abortion.

\*\* After exclusion of nine areas in which ethnicity data were unknown for >15% of women who obtained an abortion.

ported (41 reporting areas), 39% were known to have had no previous live births, and 32% had two or more previous live births (Table 12). The abortion ratio was highest for women who had three previous live births (291 per 1,000 live births) and lowest for those who had one previous live birth (194 per 1,000).

For women who obtained an abortion and whose number of previous abortions was adequately reported (40 reporting areas), 54% were reported to have obtained an abortion for the first time, and 19% were reported to have had at least two previous abortions (Table 13).

For women whose age and race were known (35 reporting areas), the differences in age distributions of white and black women were relatively small. White women had a slightly higher percentage of abortions in the youngest ( $\leq 19$  years) and oldest ( $\geq 35$  years) age groups compared with black women (18% versus 17% and 12% versus 9%, respectively), whereas women of other races who had abortions tended to be older (Table 14). For women whose marital status and race were both known (32 reporting areas), the percentage of reported abortions among black women who were unmarried was higher (89%) than that among white women (80%) or among women of other races (64%). Among older (aged  $\geq 35$  years) women obtaining abortions whose age and ethnicity were known and reported adequately (28 reporting areas), the percentage of abortions obtained by non-Hispanic women (12%) exceeded that for Hispanic women (10%) (Table 15). Among women whose marital status and ethnicity were known and reported adequately (27 reporting areas), the percentage of reported abortions obtained by unmarried women was somewhat higher for non-Hispanic women (83%) than for Hispanic women (80%) (Table 15). Adequate data were not available to cross-classify race by Hispanic ethnicity.

As in the past, approximately 88% of all abortions for which gestational age at the time of abortion was known and reported adequately (44 reporting areas) were obtained at  $\leq 12$  weeks' gestation (Table 1). The percentage of women who obtained an abortion at  $\leq 8$  weeks' gestation increased with age (Figure 4; Table 16). This association was most pronounced for abortions obtained at  $\leq 6$  weeks' gestation (41 reporting areas) (Table 17). The percentage of women who obtained an abortion decreased with age for women who obtained an abortion at 9–10, 11–12, and 13–15 weeks' gestation, through age 30–34 years at 16–20 weeks', and through age 25–29 years at  $\geq 21$  weeks' gestation (Table 16). Among women with adequately reported race and weeks of gestation (33 reporting areas), white women and women of other races were more likely than black women

to obtain abortions at  $\leq 6$ –7 weeks' gestation (Table 17). Among women with adequately reported known ethnicity and weeks of gestation (27 reporting areas), the difference in timing of their abortions between Hispanic and non-Hispanic women was minimal ( $\leq 2.4\%$ ) at any gestational age (Tables 16 and 17).

For women whose type of procedure and weeks of gestation were known and adequately reported (40 reporting areas), approximately 93% of reported abortions obtained at  $\leq 15$  weeks' gestation were performed by using curettage (primarily suction procedures) (Table 18). Approximately 94% of the 32,216 reported medical abortions were performed at  $\leq 8$  weeks' gestation, representing 8.1% of all abortions performed at  $\leq 8$  weeks' gestation. At  $\geq 16$  weeks' gestation, medical abortions ( $n = 650$ ) accounted for 1.9% of all abortions. Medical abortions constituted 0.5% of procedures performed in the 9–15 weeks' gestation range. Intrauterine instillation involving use of saline or prostaglandin was used rarely (0.3% of all abortions), primarily at  $\leq 8$  weeks' or at  $\geq 16$  weeks' gestation.

## Discussion

A total of 854,122 legal induced abortions were reported in the United States for 2002 from 47 states, DC, and NYC, which reflects an increase of 0.1% from the number of legal induced abortions reported for 2001 from the same reporting areas. After five previous annual decreases, a slight increase of 0.1% in the number of abortions is also apparent when the same 48 reporting areas that reported for all years, 1998–2002, are compared with those that reported for 2001–2002 (Table 2). Before 1998, a substantial number of legal induced abortions were estimated to have been performed in California (e.g.,  $>23\%$  of the U.S. total in 1997) (7). Beginning in 1998, data were no longer estimated for nonreporting states. The lack of data for California for 2002 explains the majority of the 28% decrease from the annual number of abortions reported for 1997 (7) and part of the decrease in the total ratio and rate.

Overall, abortion ratios and abortion rates have declined over time (Figure 1). The abortion ratio for 2002 (246 per 1,000 live births for the same 49 reporting areas as 2001) remained the same as the previous year. For the same 49 reporting areas as 2001, the abortion rate for women aged 15–44 years (16 per 1,000 women) remained identical to the rate reported for 2001 (Table 2). The overall declines in the abortion ratio and rate over time might reflect multiple factors, including a decrease in the number of unintended pregnancies (8); a shift in the age distribution of

women toward the older and less fertile ages (5); reduced or limited access to abortion services, including the passage of abortion laws that affect adolescents (e.g., parental consent or notification laws and mandatory waiting periods) (9–13); and changes in contraceptive practices, including increased use of contraceptives (e.g., condoms and, among young women, of long-acting hormonal contraceptive methods that were introduced in the early 1990s) (14–17).

In this report, the abortion rate for the United States was higher than recent rates reported for Canada and Western European countries and lower than rates reported for China, Cuba, the majority of Eastern European countries, and certain Newly Independent States of the former Soviet Union (18–20).

As in previous years, the abortion ratio in 2002 varied substantially by age. Although the abortion ratio was highest for adolescents in 2002, since the mid-1980s, the ratio has gradually declined for those aged <15 and 15–19 years, with minimal increases ( $\leq 1\%$ ) in 2002 (Figure 3). Other studies also have indicated a decrease in birth rates for females aged 10–14 and 15–19 years during 1991–2003 and a decrease in adolescent pregnancy rates during 1990–2000 (5,21–28). However, abortion rates have not decreased equally among women of all races and ethnicities; rates are declining more slowly among adolescents who are not enrolled in school and those who are members of minority populations (28,29).

The percentage distribution of abortions by known weeks of gestation has shifted slightly since the late 1970s. From 1992 (when detailed data on early abortions were first available) through 2002, data have indicated steady increases in procedures performed at  $\leq 6$  weeks' gestation with decreases occurring in the percentage of abortions performed at 8, 9–10, and 11–12 weeks' gestation. The increase in the percentage of abortions known to have been performed at  $\leq 6$  weeks' gestation might be related to an increase in the availability of early abortion services since 1992 and an increase in medical and surgical procedures that can be performed early in gestation (30,31). Abortions performed early in pregnancy are associated with lower risks of national mortality and morbidity (32,33). The proportions of abortions performed later in pregnancy ( $\geq 13$  weeks' gestation) have varied minimally since 1992. The gestational age at which an abortion is obtained can be influenced by multiple factors in addition to those for which surveillance data are available (age, race, and ethnicity). These additional factors include level of education, availability and accessibility of abortion services, timing of confirmation of

pregnancy, timing of personal decision-making, timing of prenatal diagnosis, level of fear of discovery of pregnancy, and denial of pregnancy (34–36).

Since the mid-1990s, two medical regimens (mifepristone and methotrexate, each used in conjunction with misoprostol) have been tested in clinical trials and used by clinical practitioners to perform early medical abortions (31,37). CDC surveillance data indicate that approximately 60% of all U.S. abortions are performed at  $\leq 8$  weeks' gestation, which is similar to the timing of the regimen approved for both mifepristone and methotrexate (33,38). Mifepristone for medical abortion was approved by the U.S. Food and Drug Administration (FDA) for use and distribution in the United States in September 2000. The FDA-approved protocol can be initiated at  $\leq 49$  days of gestation and requires three office visits by the patient: administration of oral mifepristone, followed 48 hours later by oral misoprostol in the health-care provider's office, and a follow-up visit in approximately 14 days. Clinical studies of alternative medical abortion regimens have been performed in multiple countries and are ongoing (39–48).

In 1997, the U.S. Induced Termination of Pregnancy (ITOP) standard report published by NCHS and used by providers for abortion reporting to state health departments was revised to include a category for "medical (nonsurgical)" procedures (49). Medical abortion procedures have been included in this report since then as a separate category. CDC will continue to monitor early medical procedures and to report on the number of these procedures (Table 8).

The percentage of abortions known to be performed by curettage increased from 88% in 1973 to  $\geq 96\%$  from 1980–2001, with a slight decrease (to 92%) in 2002 (Table 1), whereas the percentage of abortions performed by intrauterine instillation declined sharply, from 10% to  $< 1\%$  since 1989. The increase in use of curettage at  $\geq 13$  weeks is likely attributable to the lower risk for complications associated with the procedure (50,51). The percentage of abortions performed by curettage at  $\geq 13$  weeks' gestation (D&E) increased from 32% in 1974 (the first year for which these data were available) to 96% in 2002, and the percentage of abortions performed by intrauterine instillation at  $\geq 13$  weeks' gestation decreased from 58% to 0.9%; the percentage of medical abortions increased from 1.0% in 2000 to 5.2% in 2002 (Table 18) (52,53).

The differential between the abortion ratio for black women and that for white women increased from 2.0 in 1989 (the first year for which black and other races were reported separately) to 3.0 in 2002 (54). In addition, the



abortion rate for black women has been approximately three times as high as that for white women (range: 2.6–3.1) since 1991 (the first year for which rates by race were published) (55). These rates by race are substantially lower than rates previously published by NCHS and indicate that the reporting areas for the 2002 report might not be truly representative of the U.S. black female population of reproductive age (27). Census Bureau estimates and birth certificate data indicate that a substantial majority of Hispanic women report themselves as white (5). Therefore, data for certain white women represent white women of Hispanic ethnicity.

In 2002, a total of 39 states, DC, and NYC reported Hispanic ethnicity of women who obtained abortions. Because of concerns regarding the completeness of such data (>15% unknown data) in certain states, in 2002, data from only 27 states, DC, and NYC were used to determine the number and percentage of abortions obtained by women of Hispanic ethnicity. These geographic areas represent approximately 43% of reproductive-age Hispanic women in the United States for 2002 and approximately 44% of U.S. Hispanic births (56). Thus, the number of Hispanic women who obtained abortions was underestimated, and the number, ratio, and rate of abortions for Hispanic women in this report are not generalizable to the overall Hispanic population in the United States.

Abortion ratios for both Hispanic and non-Hispanic women have declined considerably since 1992 (26% and 27%, respectively). As in the past, the abortion rate for Hispanic women was higher (17 per 1,000 women) than the rate for non-Hispanic women (13 per 1,000). This finding is consistent with those of other studies published previously by NCHS (25,27). Race- and ethnicity-specific differences in legal induced abortion ratios and rates might reflect differences among populations in socioeconomic status, access to family planning and contraceptive services, contraceptive use, and incidence of unintended pregnancies.

NCHS vital statistics reports indicate that fertility and live birth rates were substantially higher for Hispanic women as a whole than for non-Hispanic women for all age groups in 2002 (5). However, because fertility and live birth rates differ substantially among both the different Hispanic (i.e., Mexican, Puerto Rican, Cuban, and other Hispanic) and non-Hispanic (white, black, and other) subpopulations, comparisons between Hispanic and non-Hispanic populations are of limited value (5). Available abortion surveillance data do not permit cross-classification of race by Hispanic ethnicity.

Despite efforts to collect and provide a cross-classification of race and ethnicity for the 2001 report in compliance with OMB Directive 15, which specifies federal standards for the collection of data on race and ethnicity (57), only 28 states (accounting for 39% of the total number of reported abortions) were able to provide adequate data for use of the recommended race categories. Eleven states could not adequately break down the data by ethnicity. Moreover, three recommended racial categories (Asian, Native Hawaiian or other Pacific Islander, and American Indian or Alaskan Native) had to be combined into one category of “other” to accommodate overlapping categories provided by multiple states. For these reasons, no additional information regarding race or ethnicity was obtained as a result of unavailable data. Therefore, further efforts to collect cross-classified race and ethnicity will not be attempted unless additional states start collecting such data.

For 1972–2000, a total of 470 abortion-related deaths (6) were reported in the 2001 abortion *MMWR Surveillance Summary* (Table 19) (6). Deaths that fit the case definition of abortion-related mortality will be reported in subsequent abortion surveillance reports.

## Limitations

These data are reported voluntarily and are subject to at least five limitations. First, abortion data are compiled and reported to CDC by the central health department in the reporting area in which the abortion was performed rather than the area in which the woman resided. This choice of area inflates the numbers, ratios, and rates of abortions for areas in which a high proportion of legal abortions are obtained by out-of-state residents and undercounts procedures for states with limited abortion services or more stringent legal requirements for obtaining an abortion (causing women to seek abortions elsewhere). Second, four states (Alaska, California, New Hampshire, and Oklahoma) did not report abortion data for 1998–1999, and three states (Alaska, California, and New Hampshire) did not report data for 2000–2002. Data for California and Oklahoma were estimated before 1998; however, data for nonreporting states have not been estimated since 1997. Third, data provided to state or area health departments by providers might be incomplete (58). Fourth, the overall number, ratio, and rate of abortions are conservative estimates; the total numbers of legal induced abortions provided by central health agencies and reported to CDC for 2002 were probably lower than the numbers actually performed. In addition,

the abortion total for 2000 provided to CDC by central health agencies are 20% lower than that reported for 2000 (the most recent year for which data are available) for the same reporting areas by The Alan Guttmacher Institute (AGI), a private organization that contacts abortion providers directly (59). A previously published report documented a discrepancy of approximately 12% (60); the reasons for this larger discrepancy are unclear. Finally, because not all states collected or reported data on all characteristics (e.g., age, race, and the number of weeks' gestation) of women obtaining a legal induced abortion in 2002, the numbers, rates, and ratios derived in this analysis might not be representative of all women who obtained abortions.

## Public Health Actions

Despite these limitations, findings from ongoing national surveillance of legal induced abortion are useful for at least six purposes. First, public health agencies use data from abortion surveillance to identify characteristics of women who are at high risk for unintended pregnancy. Second, ongoing annual surveillance is used to monitor trends in the number, ratio, and rate of abortions in the United States. Third, statistics regarding the number of pregnancies ending in abortion are used in conjunction with birth data and fetal death computations to estimate pregnancy rates (e.g., pregnancy rates among adolescents) (21–25,27). Fourth, abortion and pregnancy rates can be used to evaluate the effectiveness of family planning programs and programs for preventing unintended pregnancy. Fifth, ongoing surveillance provides data for assessing changes in clinical practice patterns related to abortion (e.g., longitudinal changes in the types of procedures and trends in weeks of gestation at the time of abortion). Finally, numbers of abortions are used as the denominator in calculating abortion mortality rates (32).

The Health Insurance Portability and Accountability Act (HIPAA) was enacted by Congress in 1996 to facilitate the electronic transfer of health data relating primarily to insurance coverage and transferability (61). HIPAA provisions mandate adoption of federal privacy protections for certain individually identifiable health information. The U.S. Department of Health and Human Services issued the Privacy Rule that became effective on April 14, 2003. Because the Privacy Rule exempts protected health information required for public health purposes from privacy protections, covered entities may provide such information without a person's authorization to a public health authority (e.g., CDC) whose stated purpose is to prevent and control dis-

ease. Collection of surveillance data for this report is exempt from the Privacy Rule. However, the complexity of the rule might result in difficulty in its interpretation and therefore in collecting surveillance data on the part of certain contributing agencies (61).

More than one in five U.S. pregnancies ended in abortion, according to a national sample survey conducted by AGI during 2001–2002 among women having abortions (59). Inconsistent method use of the pill (75.9%) or condoms (49.3%) was the most common reason that women became pregnant and obtained abortions (17). Unintended pregnancy is a pervasive public health problem for all population subgroups and women of reproductive age (29,55,62).

Although induced abortions usually result from unintended pregnancies, which often occur despite the use of contraception, the approximately 4.6 million women who have had intercourse in the previous 3 months but were not using contraception might be the most at risk for unintended pregnancy (63). Thus, a reduction in the number of abortions will require adapting complex strategies. Insurance coverage of reversible contraception has increased substantially since 1993 (64), although gaps in coverage remain substantial. Education regarding abstinence and contraceptive use, including emergency contraception, combined with access to and education regarding safe, effective contraception, and family planning services, might help reduce the incidence of unintended pregnancy and, therefore, the number of legal induced abortions in the United States (65,66).

## Acknowledgments

The authors thank Rose Pecoraro for her work on the graphics; William Callaghan, MD, for his medical consultation; and Kristi Seed for her help with the tables (all with CDC's National Center for Chronic Disease Prevention and Health Promotion, Division of Reproductive Health).

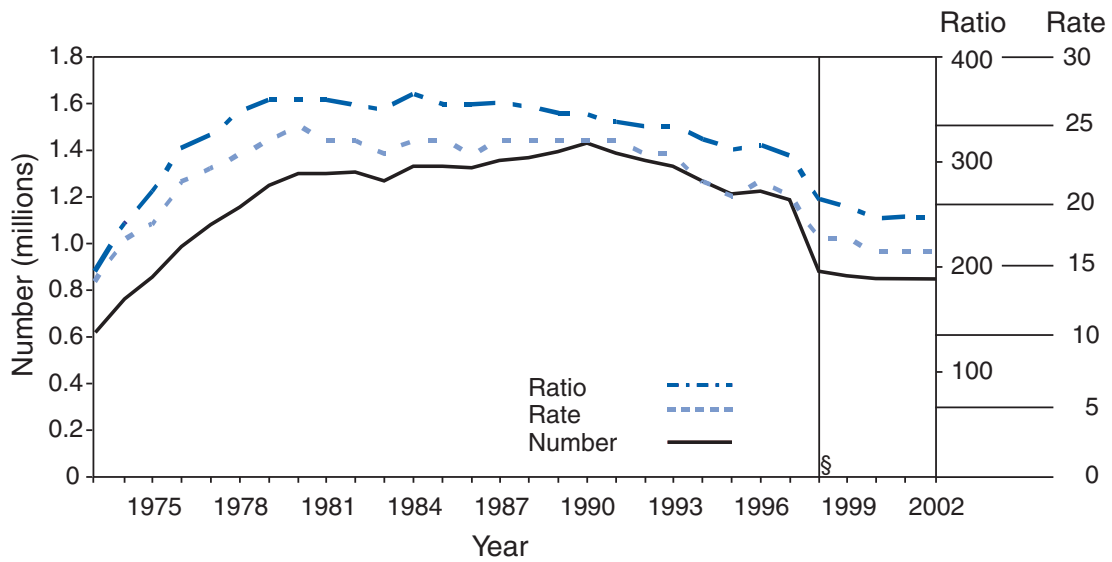
## References

1. CDC. Abortion surveillance; 1977. Atlanta, GA: US Department of Health, Education, and Welfare, Public Health Service, CDC; 1979.
2. CDC. Abortion surveillance; 1978. Atlanta, GA: US Department of Health and Human Services, Public Health Service, CDC; 1980.
3. US Census Bureau, Population Estimates Branch, state estimates by demographic characteristics, Vintage 2003, 6 race group. Released September 30, 2004. Available at <http://www.census.gov/popest/datasets.html>.
4. Kochanek KD. Induced terminations of pregnancy: reporting states; 1988. Hyattsville, MD: US Department of Health and Human Services, CDC, National Center for Health Statistics; 1991. (Monthly vital statistics reports; vol. 39, no. 12 Suppl).

5. Martin JA, Hamilton BE, Ventura SJ, Menacker F, Park MM, Sutton PD. Births: final data for 2001. Hyattsville, MD: US Department of Health and Human Services, CDC, National Center for Health Statistics; 2002. (National vital statistics reports; vol. 51, no. 2).
6. Strauss LT, Herndon J, Chang, J, et al. Abortion surveillance—United States, 2001. In: *Surveillance Summaries*, November 26, 2004. *MMWR* 2004;53(No. SS-9).
7. Koonin LM, Strauss LT, Chrisman CE, Parker WY. Abortion surveillance—United States, 1997. In: *Surveillance Summaries*, December 8, 2000. *MMWR* 1999;49(No. SS-11).
8. Abma JC, Chandra A, Mosher WD, Peterson LS, Piccinino LJ. Fertility, family planning, and women's health: new data from the 1995 National Survey of Family Growth. Hyattsville, MD: US Department of Health and Human Services, CDC, 1997; DHHS publication no. (PHS)97-1995. (Vital and health statistics; series 23, no. 19).
9. Henshaw SK. Factors hindering access to abortion services. *Fam Plann Perspect* 1995;27:54–9.
10. Henshaw SK. Abortion incidence and services in the United States, 1995–1996. *Fam Plann Perspect* 1998;30:263–70,287.
11. Alan Guttmacher Institute. State policies in brief. New York, NY: Alan Guttmacher Institute; 2004. Available at <http://www.guttmacher.org/pubs/spib.html>.
12. Ellertson C. Mandatory parental involvement in minors' abortions: effects of the laws in Minnesota, Missouri, and Indiana. *Am J Public Health* 1997;87:1367–74.
13. Henshaw SK, Finer LB. The accessibility of abortion services in the United States; 2001. *Perspect Sex Reprod Health* 2003;35:16–24.
14. Piccinino LJ, Mosher WD. Trends in contraceptive use in the United States: 1982–1995. *Fam Plann Perspect* 1998;30:4–10,46.
15. Darroch JE, Singh S. Why is teenage pregnancy declining? The roles of abstinence, sexual activity and contraceptive use. New York, NY: Alan Guttmacher Institute; 1999. Occasional report no. 1.
16. Abma JC, Sonenstein FL. Sexual activity and contraceptive practices among teenagers in the United States, 1988 and 1995. Hyattsville, MD: US Department of Health and Human Services, CDC, National Center for Health Statistics; 2001. DHHS publication no (PHS)2001-1997. (Vital and health statistics; series 23, no. 21).
17. Jones RK, Darroch JE, Henshaw SK. Contraceptive use among U.S. women having abortions in 2000–2001. *Perspect Sex Reprod Health* 2002;34:294–303.
18. Henshaw SK, Singh S, Haas T. The incidence of abortion worldwide. *Int Fam Plann Perspect* 1999;25(Suppl):S30–8.
19. Statistics Canada. Induced (therapeutic) abortions, 2000. The Daily: Friday, March 28, 2003. Ottawa, Canada: Statistics Canada. Available at <http://www.statcan.ca/Daily/English/030328/d030328e.htm>.
20. Lawlor DA, Shaw M. Teenage pregnancy rates: high compared with where and when? *J R Soc Med* 2004;97:121–3.
21. CDC. National and state-specific pregnancy rates among adolescents—United States, 1995–1997. *MMWR* 2000;49:605–11.
22. Ventura SJ, Mathews TJ, Hamilton BE. Teenage births in the United States: state trends, 1991–2000, an update. Hyattsville, MD: US Department of Health and Human Services, CDC, National Center for Health Statistics; 2002. (National vital statistics reports; vol. 50, no. 9).
23. Ventura SJ, Mosher WD, Curtin SC, Abma JC, Henshaw S. Trends in pregnancies and pregnancy rates by outcome: estimates for the United States, 1976–1996. Hyattsville, MD: US Department of Health and Human Services, CDC, National Center for Health Statistics; 2000. (Vital and health statistics; series 21, no. 56).
24. Ventura SJ, Mathews TJ, Hamilton BE. Births to teenagers in the United States, 1940–2000. Hyattsville, MD: US Department of Health and Human Services, CDC, National Center for Health Statistics; 2001. (National vital statistics reports; vol. 49, no. 10).
25. Ventura SJ, Mosher WD, Curtin SC, Abma JC, Henshaw S. Trends in pregnancy rates for the United States, 1976–97: an update. Hyattsville, MD: US Department of Health and Human Services, CDC, National Center for Health Statistics; 2001. (National vital statistics reports; vol 49, no. 4).
26. Ventura SJ, Curtin SC, Mathews TJ. Variations in teenage birth rates, 1991–98: national and state trends. Hyattsville, MD: US Department of Health and Human Services, CDC, National Center for Health Statistics; 2000. (National vital statistics reports; vol. 48, no. 6).
27. Ventura SJ, Abma JC, Mosher WD, Henshaw S. Estimated pregnancy rates for the United States, 1990–2000: an update. Hyattsville, MD: US Department of Health and Human Services, CDC, National Center for Health Statistics; 2004. (National vital statistics report; vol. 52, no. 23).
28. Ludmer PI, Nucci-Sack A, Diaz A. Adolescent abortion: trends and techniques. *Current Women's Health Reports* 2003;3:438–44.
29. Jones RK, Darroch JE, Henshaw SK. Patterns in the socioeconomic characteristics of women obtaining abortions in 2000–2001. *Perspect Sex Reprod Health* 2002;34:226–35.
30. Edwards J, Carson SA. New technologies permit safe abortion at less than six weeks' gestation and provide timely detection of ectopic gestation. *Am J Obstet Gynecol* 1997;176:1101–6.
31. Creinin MD, Edwards J. Early abortion: surgical and medical options. *Curr Probl Obstet Gynecol Fertil* 1997;20:1–32.
32. Bartlett LA, Berg CJ, Shulman HB, et al. Risk factors for legal induced abortion-related mortality in the United States. *Obstet Gynecol* 2004;103:729–37.
33. Hausknecht R. Mifepristone and misoprostol for early medical abortion: 18 months experience in the United States. *Contraception* 2003;67:463–5.
34. Evans MI, Wapner RJ. Future directions. *Clin Perinatol* 2001;28:477–80.
35. Fielding WL, Sachtleben MR, Friedman LM, Friedman EA. Comparison of women seeking early and late abortion. *Am J Obstet Gynecol* 1978;131:304–10.
36. Tietze C, Henshaw SK. Induced abortion: a world review, 1986. 6th ed. New York, NY: Alan Guttmacher Institute; 1986:29–52.
37. Kahn JG, Becker BJ, MacIsaac L, et al. The efficacy of medical abortion: a meta-analysis. *Contraception* 2000;61:29–40.
38. Joffe C. Medical abortion in social context. *Am J Obstet Gynecol* 2000;183(Suppl):S10–S15.
39. World Health Organisation Task Force on Post-ovulatory Methods of Fertility Regulation. Comparison of two doses of mifepristone in combination with misoprostol for early medical abortion: a randomized trial. *Br J Obstet Gynaecol* 2000;107:524–30.
40. McKinley C, Thong KJ, Baird DT. The effect of dose of mifepristone and gestation on the efficacy of medical abortion with mifepristone and misoprostol. *Hum Reprod* 1993;8:1502–5.
41. El-Refaey H, Rajasekar D, Abdalla M, Calder L, Templeton A. Induction of abortion with mifepristone (RU 486) and oral or vaginal misoprostol. *N Engl J Med* 1995;332:983–7.
42. Ashok PW, Templeton A. Nonsurgical mid-trimester termination of pregnancy; a review of 500 consecutive cases. *Br J Obstet Gynaecol* 1999;106:706–10.

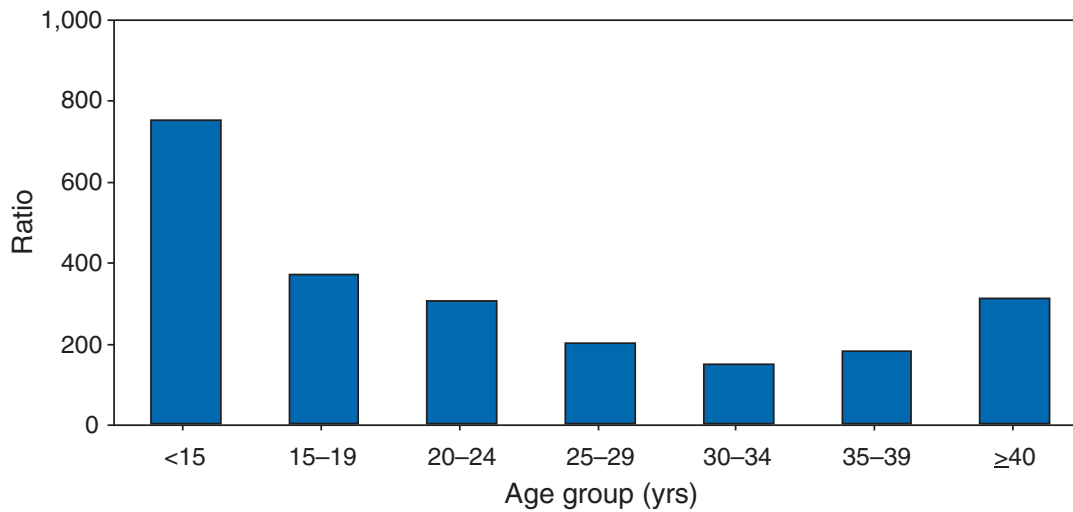
43. Ashok PW, Penney GC, Flett GMM, Templeton A. An effective regimen for early medical abortion: a report of 2000 consecutive cases. *Hum Reprod* 1998;13:2962–5.
44. Schaff EA, Fielding SL, Westhoff C, et al. Vaginal misoprostol administered 1, 2, or 3 days after mifepristone for early medical abortion: a randomized trial. *JAMA* 2000;284:1948–53.
45. Elul B, Hajri S, Ngoc NTN, et al. Can women in less-developed countries use a simplified medical abortion regimen? *Lancet* 2001;357:1402–5.
46. Jones RK, Henshaw SK. Mifepristone for early medical abortion: experiences in France, Great Britain and Sweden. *Perspect Sex Reprod Health* 2002;34:154–61.
47. Child TJ, Thomas J, Rees M, MacKenzie IZ. A comparative study of surgical and medical procedures: 932 pregnancy terminations up to 63 days gestation. *Human Reprod* 2001;16:67–71.
48. Ngai SW, Tang OS, Chan YM, Ho PC. Vaginal misoprostal alone for medical abortion up to 9 weeks of gestation: efficacy and acceptability. *Human Reprod* 2000;15:1159–62.
49. CDC. Handbook on the reporting of induced termination of pregnancy. Hyattsville, MD: US Department of Health and Human Services, CDC, National Center for Health Statistics; 1998. DHHS publication no. (PHS)98 1117:1–18.
50. Cates W Jr, Schulz KF, Grimes DA, et al. Dilatation and evacuation procedures and second-trimester abortions: the role of physician skill and hospital setting. *JAMA* 1982;248:559–63.
51. Grimes DA. Second-trimester abortions in the United States. *Fam Plann Perspect* 1984;16:260–6.
52. CDC. Abortion surveillance—United States, 2000. In: *Surveillance Summaries*, November 28, 2003. *MMWR* 2003;52(No. SS-12).
53. CDC. Abortion surveillance, 1974. Atlanta, GA: US Department of Health, Education, and Welfare, Public Health Service, CDC; 1976.
54. Koonin LM, Smith JC, Ramick M, Lawson HW. Abortion surveillance—United States, 1989. In: *Surveillance Summaries*, September 4, 1992. *MMWR* 1992;41(No. SS-5).
55. CDC. Abortion surveillance—United States, 1991. In: *Surveillance Summaries*, May 5, 1995. *MMWR* 1995;44(No. SS-2).
56. CDC. Bridged-race Vintage 2001 postcensal population estimates for July 1, 2000–July 1, 2001, by year, single-year of age, bridged-race, Hispanic origin, and sex. Atlanta, GA: US Department of Health and Human Services, CDC; National Center for Health Statistics; 2001. Available at <http://www.cdc.gov/nchs/about/major/dvs/popbridge/datadoc.htm> (NCHS data file pcen v2001.txt).
57. Office of Management and Budget. Provisional guidance on the implementation of the 1997 standards for federal data on race and ethnicity. Washington, DC: Office of Management and Budget; 2000. Available at <http://www.ofm.wa.gov/pop/race/omb.pdf>.
58. Henshaw SK, Feivelson DJ. Teenage abortion and pregnancy statistics by state, 1996. *Fam Plann Perspect* 2000;32:272–80.
59. Finer LB, Henshaw SK. Abortion incidence and services in the United States in 2000. *Perspect Sex Reprod Health* 2003;35:6–15.
60. CDC. Abortion surveillance—United States, 1996. In: *Surveillance Summaries*, July 30, 1999. *MMWR* 1999;48(No. SS-4).
61. CDC. HIPAA privacy rule and public health: guidance from CDC and the U.S. Department of Health and Human Services. *MMWR* 2003;52(Suppl).
62. Henshaw SK. Unintended pregnancy in the United States. *Fam Plann Perspect* 1998;30:24–9,46.
63. Mosher WD, Martinez GM, Chandra A, Abma JC, Willson SJ. Use of contraception and use of family planning services in the United States: 1982–2002. Hyattsville, MD: US Department of Health and Human Services, CDC, National Center for Health Statistics; 2004. Advance data from vital and health statistics; no. 350.
64. Sonfield A, Gold RB, Frost JJ, Darroch JE. U.S. Insurance Coverage of Contraceptives and the Impact of Contraceptive Coverage Mandates, 2002. *Perspect Sex Reprod Health* 2004;36:72–9.
65. Gonen JS. Value purchasing: investing in women's health: strategies for employers. Washington, DC: Jacobs Institute of Women's Health; 2000.
66. Grimes DA, Creinin MD. Induced abortion: an overview for inter-nists. *Ann Intern Med* 2004;140:620–6.

**FIGURE 1. Number, ratio,\* and rate† of legal abortions performed, by year — United States, 1973–2002§**



\* Number of abortions per 1,000 live births.  
 † Number of abortions per 1,000 women aged 15–44 years.  
 § For 1998–2002, data are from 48 reporting areas (see Table 2).

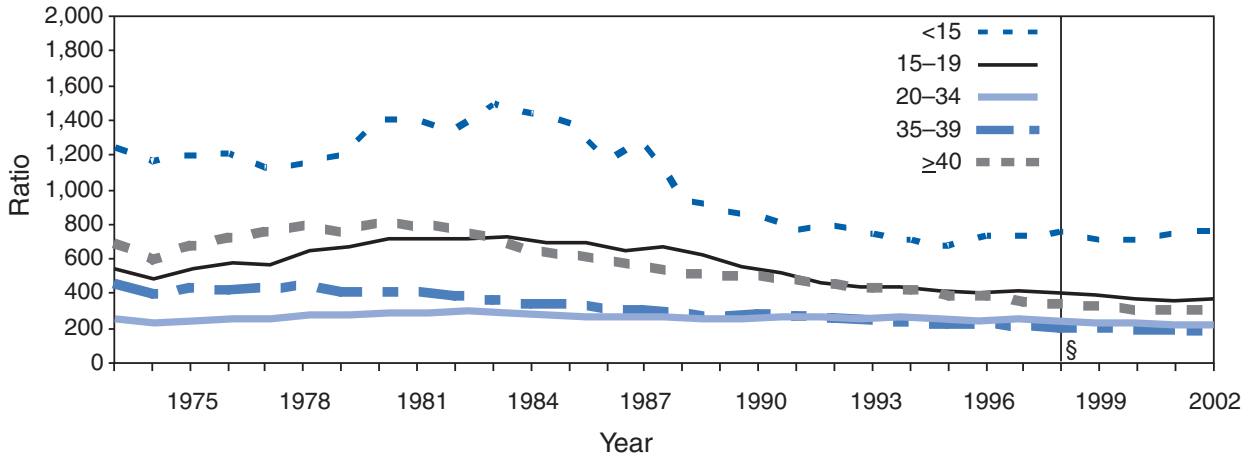
**FIGURE 2. Abortion ratio,\* by age group of women who obtained a legal abortion — selected states,† United States, 2002**



\* Number of abortions per 1,000 live births.  
 † Data are from 46 states, the District of Columbia, and New York City (see Table 4).



**FIGURE 3. Abortion ratio,\* by age group† of women who obtained a legal abortion — selected states,§ United States, 1973–2002**

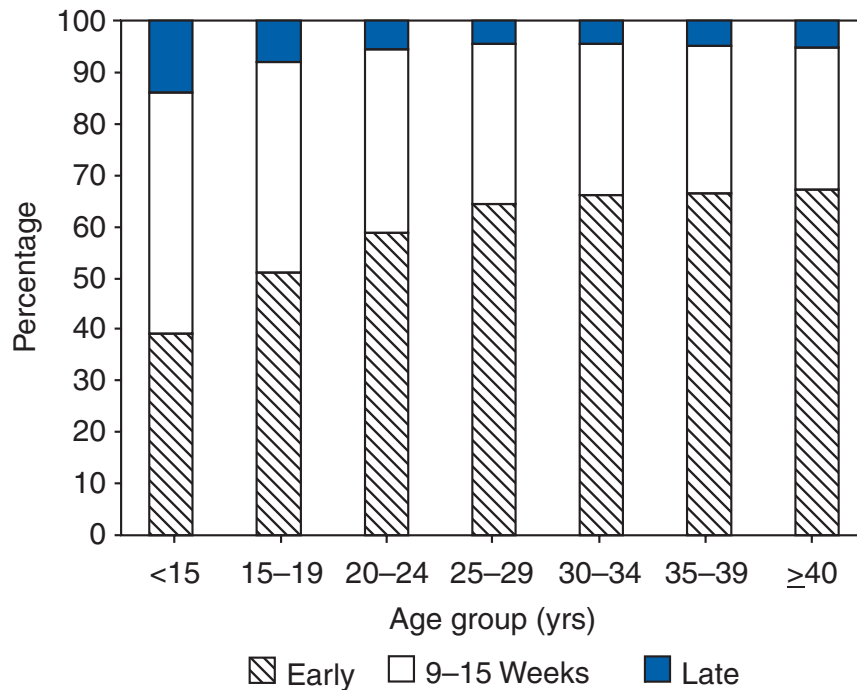


\*Number of abortions per 1,000 live births.

†In years.

§For 1998–1999, data are from 47 reporting areas, and for 2000–2002, from 48 reporting areas.

**FIGURE 4. Percentage\* of women who obtained early† or late§ abortions, by age group of women — selected states,¶ United States, 2002**



\*Based on total known weeks of gestation.

†≤8 weeks' gestation.

§≥16 weeks' gestation.

¶Data are for 41 states and New York City; excludes one state (Nebraska) where gestational age was unknown for >15% of women (see Table 16).

**TABLE 1. Characteristics of women who obtained legal abortions — United States, 1973–2002**

Characteristic	1973	1974	1975	1976	1977	1978	1979	1980	1981	1982	1983
<b>Reported no. of legal abortions*</b>	615,831	763,476	854,853	988,267	1,079,430	763,476	1,251,921	1,297,606	1,300,760	1,303,980	1,268,987
	<b>Percentage distribution<sup>§</sup></b>										
<b>Residence</b>											
In-state/area	74.8	86.6	89.2	90.0	90.0	89.3	90.0	92.6	92.5	92.9	93.3
Out-of-state/area	25.2	13.4	10.8	10.0	10.0	10.7	10.0	7.4	7.5	7.1	6.7
<b>Age group (yrs)</b>											
≤19	32.7	32.6	33.1	32.1	30.8	30.0	30.0	29.2	28.0	27.1	27.1
20–24	32.0	31.8	31.9	33.3	34.5	35.0	35.4	35.5	35.3	35.1	34.7
≥25	35.3	35.6	35.0	34.6	34.7	35.0	34.6	35.3	36.7	37.8	38.2
<b>Race<sup>¶</sup></b>											
White	72.5	69.7	67.8	66.6	66.4	67.0	68.9	69.9	69.9	68.5	67.6
Black	27.5	30.3	32.2	33.4	33.6	33.0	31.1	30.1	30.1	31.5	32.4
Other**	—††	—	—	—	—	—	—	—	—	—	—
<b>Ethnicity</b>											
Hispanic	—	—	—	—	—	—	—	—	—	—	—
Non-Hispanic	—	—	—	—	—	—	—	—	—	—	—
<b>Marital status</b>											
Married	27.4	27.4	26.1	24.6	24.3	26.4	24.7	23.1	22.1	22.0	21.4
Unmarried	72.6	72.6	73.9	75.4	75.7	73.6	75.3	76.9	77.9	78.0	78.6
<b>No. of live births<sup>§§</sup></b>											
0	48.6	47.9	47.1	47.7	53.4	56.6	58.1	58.4	58.3	57.8	57.1
1	18.8	19.6	20.2	20.7	19.0	19.2	19.1	19.4	19.7	20.3	20.7
2	14.2	14.8	15.5	15.4	14.4	14.1	13.8	13.7	13.7	13.9	14.2
3	8.7	8.7	8.7	8.3	7.0	5.9	5.5	5.3	5.3	5.1	5.2
≥4	9.7	9.0	8.5	7.9	6.2	4.2	3.5	3.2	3.0	2.9	2.8
<b>Type of procedure</b>											
Curettage	88.4	89.7	91.0	92.8	93.7	94.6	95.0	95.5	96.1	96.5	96.8
Suction curettage	74.9	77.4	82.6	82.6	90.7	90.2	91.3	89.8	90.4	90.7	91.1
Sharp curettage	13.5	12.3	8.4	10.2	3.0	4.4	3.7	5.7	5.7	5.8	5.7
Intrauterine instillation	10.3	7.8	6.2	6.0	5.4	3.9	3.3	3.1	2.8	2.5	2.1
Hysterotomy/hysterectomy <sup>¶¶¶</sup>	0.7	0.6	0.4	0.3	0.2	0.1	0.1	0.1	0.1	0.0	0.0
Other <sup>¶¶¶</sup>	0.6	1.9	2.4	0.9	0.7	1.4	1.6	1.3	1.0	1.0	1.1
<b>Weeks of gestation</b>											
≤8	36.1	42.6	44.6	47.0	51.1	52.2	52.1	51.7	51.2	50.6	49.7
≤6	—	—	—	—	—	—	—	—	—	—	—
7	—	—	—	—	—	—	—	—	—	—	—
8	—	—	—	—	—	—	—	—	—	—	—
9–10	29.4	28.7	28.4	28.1	27.2	26.9	26.9	26.2	26.8	26.7	26.8
11–12	17.9	15.4	14.9	14.4	13.1	12.3	12.5	12.2	12.1	12.4	12.8
13–15	6.9	5.5	5.0	4.5	3.4	4.0	4.2	5.1	5.2	5.3	5.8
16–20	8.0	6.6	6.1	5.1	4.3	3.7	3.4	3.9	3.7	3.9	3.9
≥21	1.7	1.2	1.0	0.9	0.9	0.9	0.9	0.9	1.0	1.1	1.0

\* See Table 2 for number of areas reporting each year.

† With one exception, no characteristics were available for the excluded states in years before 1998. Oklahoma data available for 2000–2002.

§ On the basis of known values in data from all areas reporting a given characteristic with ≤15% unknowns. The number of areas adequately reporting a given characteristic varied. For 2002, the number of areas included for residence was 46; age, 48; race, 37; ethnicity, 29; marital status, 39; number of previous live births, 41; number of previous induced abortions, 40; type of procedure, 45; and weeks of gestation, 44. Early numbers might differ (by 0.1%) from numbers previously published because of adjusting percentages to total 100.0%.

¶ Black race reported as black and other races through 1984. For 1990–1997, one state included “other” races with blacks.

\*\* Includes all other races.

†† Not available.

§§ For 1973–1977, data indicate number of living children.

¶¶¶ Hysterotomy and hysterectomy included in “other” beginning in 1984. “Other” also included procedures reported as “other” and medical (nonsurgical) procedures (see Table 8) beginning in 1996. For 2002, the number of medical (nonsurgical) procedures reported was 36,297.

\*\*\* Data for 36 of 39 areas reporting weeks of gestation.

††† Data for 38 of 41 areas reporting weeks of gestation.

§§§ Data for 38 of 40 areas reporting weeks of gestation.

¶¶¶¶ Data for 37 of 40 areas reporting weeks of gestation.

\*\*\*\* Data for 40 of 42 areas reporting weeks of gestation.

†††† Data for 42 of 44 areas reporting weeks of gestation.

§§§§ Data for 41 of 43 areas reporting weeks of gestation.

TABLE 1. (Continued) Characteristics of women who obtained legal abortions — United States, 1973–2002

Characteristic	1984	1985	1986	1987	1988	1989	1990	1991	1992	1993	1994
<b>Reported no. of legal abortions*</b>	1,333,521	1,328,570	1,328,112	1,353,671	1,371,285	1,396,658	1,429,247	1,388,937	1,359,146	1,330,414	1,267,415
	<b>Percentage distribution<sup>§</sup></b>										
<b>Residence</b>											
In-state/area	92.0	92.4	92.4	91.7	91.4	91.0	91.8	91.7	92.1	91.4	91.5
Out-of-state/area	8.0	7.6	7.6	8.3	8.6	9.0	8.2	8.3	7.9	8.6	8.5
<b>Age group (yrs)</b>											
≤19	26.4	26.3	25.3	25.8	25.3	24.2	22.4	21.0	20.1	20.0	20.2
20–24	35.3	34.7	34.0	33.4	32.8	32.6	33.2	34.4	34.5	34.4	33.5
≥25	38.3	39.0	40.7	40.8	41.9	43.2	44.4	44.6	45.4	45.6	46.3
<b>Race<sup>¶</sup></b>											
White	67.4	66.7	67.0	66.4	64.4	64.2	64.8	63.9	61.6	60.9	60.6
Black	32.6	29.8	28.7	29.3	31.1	31.2	31.9	32.5	33.9	34.9	34.7
Other**	— <sup>††</sup>	3.5	4.3	4.3	4.5	4.6	3.3	3.6	4.5	4.2	4.7
<b>Ethnicity</b>											
Hispanic	—	—	—	—	—	—	11.4	13.2	15.0	14.5	14.1
Non-Hispanic	—	—	—	—	—	—	88.6	86.8	85.0	85.5	85.9
<b>Marital status</b>											
Married	20.5	19.3	20.2	20.8	20.3	20.1	21.7	21.4	20.8	20.4	19.9
Unmarried	79.5	80.7	79.8	79.2	79.7	79.9	78.3	78.6	79.2	79.6	80.1
<b>No. of live births<sup>§§</sup></b>											
0	57.0	56.3	55.1	53.6	52.4	52.2	49.1	47.8	45.9	46.5	46.2
1	20.9	21.6	22.1	22.8	23.4	23.6	24.4	25.3	25.9	25.8	25.9
2	14.4	14.5	14.9	15.5	16.0	15.9	17.0	17.5	18.0	17.8	17.8
3	5.1	5.1	5.3	5.5	5.6	5.7	6.1	6.4	6.7	6.6	6.7
≥4	2.6	2.5	2.6	2.6	2.6	2.6	3.4	3.0	3.5	3.3	3.4
<b>Type of procedure</b>											
Curettage	96.8	97.5	97.0	97.2	98.6	98.8	98.9	99.0	98.9	99.1	99.1
Suction curettage	93.1	94.6	94.5	93.4	95.1	97.1	97.2	96.5	95.7	95.5	96.5
Sharp curettage	3.7	2.9	2.5	3.8	3.5	1.7	1.7	2.5	3.2	3.6	2.6
Intrauterine instillation	1.9	1.7	1.4	1.3	1.1	0.9	0.8	0.6	0.7	0.6	0.5
Other <sup>¶¶¶</sup>	1.3	0.8	1.6	1.5	0.3	0.3	0.3	0.4	0.4	0.3	0.4
<b>Weeks of gestation</b>											
≤8	50.5	50.3	51.0	50.4	48.7	49.8	51.6	52.4	52.1	52.3	53.7
≤6	—	—	—	—	—	—	—	—	14.3***	14.7 <sup>†††</sup>	15.7 <sup>§§§</sup>
7	—	—	—	—	—	—	—	—	15.6***	16.2 <sup>†††</sup>	16.5 <sup>§§§</sup>
8	—	—	—	—	—	—	—	—	22.2***	21.6 <sup>†††</sup>	21.6 <sup>§§§</sup>
9–10	26.4	26.6	25.8	26.0	26.4	25.8	25.3	25.1	24.2	24.4	23.5
11–12	12.6	12.5	12.2	12.4	12.7	12.6	11.7	11.5	12.1	11.6	10.9
13–15	5.8	5.9	6.1	6.2	6.6	6.6	6.4	6.1	6.0	6.3	6.3
16–20	3.9	3.9	4.1	4.2	4.5	4.2	4.0	3.8	4.2	4.1	4.3
≥21	0.8	0.8	0.8	0.8	1.1	1.0	1.0	1.1	1.4	1.3	1.3

\* See Table 2 for number of areas reporting each year.

† With one exception, no characteristics were available for the excluded states in years before 1998. Oklahoma data available for 2000–2002.

§ On the basis of known values in data from all areas reporting a given characteristic with ≤15% unknowns. The number of areas adequately reporting a given characteristic varied. For 2002, the number of areas included for residence was 46; age, 48; race, 37; ethnicity, 29; marital status, 39; number of previous live births, 41; number of previous induced abortions, 40; type of procedure, 45; and weeks of gestation, 44. Early numbers might differ (by 0.1%) from numbers previously published because of adjusting percentages to total 100.0%.

¶ Black race reported as black and other races through 1984. For 1990–1997, one state included “other” races with blacks.

\*\* Includes all other races.

†† Not available.

§§ For 1973–1977, data indicate number of living children.

¶¶¶ Hysterotomy and hysterectomy included in “other” beginning in 1984. “Other” also included procedures reported as “other” and medical (nonsurgical) procedures (see Table 8) beginning in 1996. For 2002, the number of medical (nonsurgical) procedures reported was 36,297.

\*\*\* Data for 36 of 39 areas reporting weeks of gestation.

††† Data for 38 of 41 areas reporting weeks of gestation.

§§§ Data for 38 of 40 areas reporting weeks of gestation.

¶¶¶¶ Data for 37 of 40 areas reporting weeks of gestation.

\*\*\*\* Data for 40 of 42 areas reporting weeks of gestation.

†††† Data for 42 of 44 areas reporting weeks of gestation.

§§§§ Data for 41 of 43 areas reporting weeks of gestation.

**TABLE 1. (Continued) Characteristics of women who obtained legal abortions — United States, 1973–2002**

Characteristic	1995	1996	1997	1998	1999	2000	2001	2002
<b>Reported no. of legal abortions*</b>	1,210,883	1,225,937	1,186,039	884,273	861,789	857,475	853,485	854,122
<b>Reported no. of legal abortions excluding AK, CA, NH, OK†</b>	908,243	934,549	900,171	884,273	861,789	850,293	846,447	847,622
	<b>Percentage distribution§</b>							
<b>Residence</b>								
In-state/area	91.5	91.7	91.8	91.4	91.2	91.3	91.3	91.2
Out-of-state/area	8.5	8.3	8.2	8.6	8.8	8.7	8.7	8.8
<b>Age group (yrs)</b>								
≤19	20.1	20.3	20.1	19.8	19.2	18.8	18.1	17.5
20–24	32.5	31.8	31.7	31.8	32.2	32.8	33.4	33.4
≥25	47.4	47.9	48.2	48.4	48.6	48.4	48.5	49.1
<b>Race¶</b>								
White	59.6	59.1	58.4	58.7	56.2	56.6	55.4	55.5
Black	35.0	35.3	35.9	35.4	37.3	36.3	36.6	36.6
Other**	5.4	5.6	5.7	5.9	6.5	7.1	8.0	7.9
<b>Ethnicity</b>								
Hispanic	15.1	15.7	15.6	17.1	17.3	17.2	17.1	18.2
Non-Hispanic	84.9	84.3	84.4	82.9	82.7	82.8	82.9	81.8
<b>Marital status</b>								
Married	19.7	19.6	19.0	18.9	19.2	18.7	18.4	18.1
Unmarried	80.3	80.4	81.0	81.1	80.8	81.3	81.6	81.9
<b>No. of live births§§</b>								
0	45.2	44.2	42.2	41.1	40.6	40.0	45.2	40.0
1	26.5	26.8	27.6	27.9	27.9	27.7	25.2	27.3
2	18.0	18.4	19.1	19.6	19.8	20.1	18.4	20.2
3	6.8	7.0	7.3	7.5	7.7	7.9	7.3	8.2
≥4	3.5	3.6	3.8	3.9	4.0	4.3	3.9	4.3
<b>Type of procedure</b>								
Curettage	98.9	98.8	98.3	98.3	98.2	97.9	95.5	92.4
Suction curettage	96.6	96.5	97.3	96.8	96.0	95.6	92.8	90.0
Sharp curettage	2.3	2.3	1.0	1.5	2.2	2.3	2.7	2.4
Intrauterine instillation	0.5	0.4	0.4	0.3	0.2	0.4	0.6	0.8
Other¶¶	0.6	0.8	1.3	1.4	1.6	1.7	3.9	6.8
<b>Weeks of gestation</b>								
≤8	54.0	54.6	55.4	55.7	57.6	58.1	59.1	60.5
≤6	15.7§§§	16.3¶¶¶	17.6****	19.2†††	21.9§§§§	23.3§§§§	24.9****	27.1††††
7	17.1§§§	17.4¶¶¶	18.1****	17.8†††	17.6§§§§	17.8§§§§	17.9****	17.8††††
8	21.2§§§	21.0¶¶¶	19.6****	18.8†††	18.2§§§§	17.1§§§§	16.4****	15.6††††
9–10	23.1	22.6	22.0	21.5	20.2	19.8	19.0	18.4
11–12	10.9	11.0	10.7	10.9	10.2	10.2	10.0	9.6
13–15	6.3	6.0	6.2	6.4	6.2	6.2	6.2	6.0
16–20	4.3	4.3	4.3	4.1	4.3	4.3	4.3	4.1
≥21	1.4	1.5	1.4	1.4	1.5	1.4	1.4	1.4

\* See Table 2 for number of areas reporting each year.

† With one exception, no characteristics were available for the excluded states in years before 1998. Oklahoma data available for 2000–2002.

§ On the basis of known values in data from all areas reporting a given characteristic with ≤15% unknowns. The number of areas adequately reporting a given characteristic varied. For 2002, the number of areas included for residence was 46; age, 48; race, 37; ethnicity, 29; marital status, 39; number of previous live births, 41; number of previous induced abortions, 40; type of procedure, 45; and weeks of gestation, 44. Early numbers might differ (by 0.1%) from numbers previously published because of adjusting percentages to total 100.0%.

¶ Black race reported as black and other races through 1984. For 1990–1997, one state included "other" races with blacks.

\*\* Includes all other races.

†† Not available.

§§ For 1973–1977, data indicate number of living children.

¶¶ Hysterotomy and hysterectomy included in "other" beginning in 1984. "Other" also included procedures reported as "other" and medical (nonsurgical) procedures (see Table 8) beginning in 1996. For 2002, the number of medical (nonsurgical) procedures reported was 36,297.

\*\*\* Data for 36 of 39 areas reporting weeks of gestation.

††† Data for 38 of 41 areas reporting weeks of gestation.

§§§ Data for 38 of 40 areas reporting weeks of gestation.

¶¶¶ Data for 37 of 40 areas reporting weeks of gestation.

\*\*\*\* Data for 40 of 42 areas reporting weeks of gestation.

†††† Data for 42 of 44 areas reporting weeks of gestation.

§§§§ Data for 41 of 43 areas reporting weeks of gestation.

**TABLE 2. Number, ratio,\* and rate† of legal abortions and source of reporting for all reporting areas and for the 48 areas that reported in 1998–2002, by year — United States, 1970–2002**

Year	No. of legal abortions	Ratio*	Rate†	No. of areas reporting	
				Central health agency§	Hospitals/facilities¶
<b>All reporting areas</b>					
1970	193,491	52	5	8	7
1971	485,816	137	11	19	7
1972	586,760	180	13	21	8
1973	615,831	196	14	26	26
1974	763,476	242	17	37	15
1975	854,853	272	18	39	13
1976	988,267	312	21	41	11
1977	1,079,430	325	22	46	6
1978	1,157,776	347	23	48	4
1979	1,251,921	358	24	47	5
1980	1,297,606	359	25	47	5
1981	1,300,760	358	24	46	6
1982	1,303,980	354	24	46	6
1983	1,268,987	349	23	46	6
1984	1,333,521	364	24	44	8
1985	1,328,570	354	24	44	8
1986	1,328,112	354	23	43	9
1987	1,353,671	356	24	45	7
1988	1,371,285	352	24	45	7
1989	1,396,658	346	24	45	7
1990	1,429,247	344	24	46	6
1991	1,388,937	338	24	47	5
1992	1,359,146	334	23	47	5
1993	1,330,414	333	23	47	5
1994	1,267,415	321	21	47	5
1995	1,210,883	311	20	48	4
1996	1,225,937	315**	21	48	4
1997	1,186,039	306	20	48	4
1998††	884,273	264	17	48	0
1999††	861,789	256	17	48	0
2000§§	857,475	245	16	49	0
2001§§	853,485	246	16	49	0
2002§§	854,122	246	16	49	0
<b>48 Reporting areas¶¶</b>					
1995	908,243	277	18	47	1
1996	934,549	285**	18	47	1
1997	900,171	274	17	46	2
1998	884,273	264	17	48	0
1999	861,789	256	17	48	0
2000	850,293	246	16	48	0
2001	846,447	247	16	48	0
2002	847,622	248	16	48	0

\* Number of abortions per 1,000 live births.

† Number of abortions per 1,000 women aged 15–44 years.

§ State health departments and the health departments of New York City and the District of Columbia.

¶ Hospitals or other medical facilities in state.

\*\* Beginning in 1996, the ratio was based on births reported by the National Center for Health Statistics, CDC.

†† Without estimates for Alaska, California, New Hampshire, and Oklahoma, which did not report number of legal abortions for 1998–1999.

§§ Without estimates for Alaska, California, and New Hampshire, which did not report number of legal abortions for 1998–2002.

¶¶ Without estimates for Alaska, California, and New Hampshire, which did not report number of legal abortions for 1998–2002, and for Oklahoma, which did not report for 1998–1999.



**TABLE 3. Reported number,\* ratio,<sup>†</sup> and rate<sup>§</sup> of legal abortions by residence and occurrence, and percentage of abortions obtained by out-of-state residents,<sup>¶</sup> by state of occurrence — United States, 2002**

State	Residence			Occurrence			% of legal abortions obtained by out-of-state residents
	No. of legal abortions	Ratio	Rate	No. of legal abortions	Ratio	Rate	
Alabama	10,691	181	11	12,249	208	13	18.0
Alaska**	— <sup>††</sup>	—	—	—	—	—	—
Arizona <sup>§§</sup>	10,758	122	10	10,677	122	9	2.6
Arkansas	5,286	141	9	5,316	142	9	15.1
California**	—	—	—	—	—	—	—
Colorado	6,957	102	7	7,757	113	8	11.5
Connecticut	13,306	317	18	13,470	321	19	4.2
Delaware <sup>¶¶</sup>	3,486	314	20	4,493	405	26	27.3
District of Columbia	3,486	465	24	5,511	735	39	56.1
Florida***	449	2	0	87,964	428	27	—
Georgia	30,614	230	16	34,091	256	18	11.3
Hawaii	3,927	225	16	3,920	224	16	0.3
Idaho	1,509	72	5	829	40	3	3.5
Illinois	43,645	242	16	46,945	260	17	9.0
Indiana	12,535	147	10	10,937	129	8	4.9
Iowa <sup>¶¶</sup>	6,781	181	11	6,240	166	10	—
Kansas	6,321	160	11	11,765	299	21	47.1
Kentucky	6,077	112	7	3,502	65	4	14.6
Louisiana***	646	10	1	10,451	161	11	—
Maine	2,253	166	8	2,315	171	9	3.6
Maryland <sup>¶¶</sup>	15,064	205	13	13,595	185	11	14.3
Massachusetts <sup>§§</sup>	25,146	312	18	25,249	313	18	6.6
Michigan	28,629	220	13	29,231	225	14	3.4
Minnesota	13,415	197	12	14,187	209	13	9.1
Mississippi	6,882	166	11	3,605	87	6	4.2
Missouri	15,165	202	13	8,201	109	7	9.5
Montana	2,068	187	11	2,248	203	12	9.4
Nebraska	3,285	129	9	3,775	149	10	15.8
Nevada	9,232	283	20	9,960	306	22	7.0
New Hampshire**	—	—	—	—	—	—	—
New Jersey <sup>†††</sup>	33,730	294	19	32,854	286	18	4.1
New Mexico	5,633	203	14	5,069	183	13	4.0
New York	123,709	492	30	127,983	509	31	—
City	86,564	732	—	91,800 <sup>§§§</sup>	776	—	6.6 <sup>¶¶¶</sup>
State	37,145 <sup>****</sup>	279	—	36,183	272	—	8.6 <sup>¶¶¶</sup>
North Carolina	25,969	221	14	29,229	249	16	14.3
North Dakota	896	116	7	1,219	157	9	36.2
Ohio	33,597	226	14	35,830	241	15	8.8
Oklahoma	7,015	139	10	6,500	129	9	4.4
Oregon	11,808	261	16	13,172	291	18	12.4
Pennsylvania	35,894	251	14	35,167	246	14	4.7
Rhode Island	4,248	329	18	5,550	430	24	25.3
South Carolina	11,256	206	13	6,657	122	8	4.3
South Dakota	1,001	94	6	826	77	5	17.1
Tennessee	15,640	202	13	17,807	230	14	20.1
Texas	76,539	206	16	79,929	215	17	3.7
Utah	3,469	71	6	3,524	72	7	6.4
Vermont	1,425	223	11	1,635	256	13	13.7
Virginia	26,815	269	17	24,992	251	16	5.7
Washington	25,500	323	19	25,148	318	19	4.7
West Virginia	2,551	123	7	2,049	99	6	10.8
Wisconsin <sup>¶¶</sup>	11,853	173	10	10,489	153	9	1.8
Wyoming	761	116	7	10	†††	†††	0.0
Other residence <sup>§§§§</sup>	4,396	—	—	NA <sup>¶¶¶¶</sup>	NA	NA	NA
<b>Total known</b>	<b>752,238</b>			<b>854,122</b>	<b>246</b>	<b>16</b>	<b>8.8</b>

**TABLE 3. (Continued) Reported number,\* ratio,<sup>†</sup> and rate<sup>§</sup> of legal abortions by residence and occurrence, and percentage of abortions obtained by out-of-state residents,<sup>¶</sup> by state of occurrence — United States, 2002**

State	Residence			Occurrence			% of legal abortions obtained by out-of-state residents
	No. of legal abortions	Ratio	Rate	No. of legal abortions	Ratio	Rate	
Unknown residence****	3,469						
Not reported by residence††††	98,415						
<b>Total</b>	<b>854,122</b>	<b>246</b>	<b>16</b>				

\* Abortion data reported by central health agencies.

† Number of abortions per 1,000 live births. **Source:** Martin JA, Hamilton BE, Sutton PD, Ventura SJ, Menacker F, Munson ML. Births: final data for 2002. Atlanta, GA: US Department of Health and Human Services, CDC, National Center for Health Statistics; 2003. (National Vital Statistics Reports; vol. 52, no. 10).

§ Number of abortions per 1,000 women aged 15–44 years. **Source:** U.S. Bureau of the Census, Population Estimates Branch, state estimates by demographic characteristics, Vintage 2003, 6-race group. Released September 30, 2004. Available at <http://www.census.gov/popest/datasets.html>.

¶ Based on number of abortions for which residence of women was known.

\*\* State did not report abortions.

†† Not available.

§§ Reported numbers of abortions for in-state residents without detailed information regarding out-of-state residents.

¶¶ Reported for own residents only.

\*\*\* State did not report abortions by residence; therefore, no information regarding in-state residents is available.

††† Numbers do not include private physicians' procedures.

§§§ Reported by the New York City Department of Health.

¶¶¶ Percentage based on number of abortions reported as "out-of-reporting area."

\*\*\*\* Abortions for women whose state of residence was listed as "New York."

†††† Ratio and rate not provided because of small numbers.

§§§§ Women whose residence was listed as Canada, Mexico, or "other."

¶¶¶¶ Not applicable.

\*\*\*\*\* Reported as unknown residence (2,979) or out-of-state residence, but not specified (490).

††††† Total for states that did not report abortions by residence.

**TABLE 4. Reported legal abortions, by age group of women who obtained an abortion and state of occurrence — selected states,\* United States, 2002**

State	Age group (yrs)										Total							
	<15		15–19		20–24		25–29		30–34			35–39		>40		Unknown		No. (%)†
Alabama	115	(0.9)	2,131	(17.4)	4,433	(36.2)	2,872	(23.4)	1,585	(12.9)	797	(6.5)	311	(2.5)	5	(0.0)	12,249	(100.0)
Arizona	47	(0.4)	1,985	(18.6)	3,413	(32.0)	2,091	(19.6)	1,421	(13.3)	805	(7.5)	316	(3.0)	599	(5.6)	10,677	(100.0)
Arkansas	54	(1.0)	952	(17.9)	1,833	(34.5)	1,244	(23.4)	681	(12.8)	388	(7.3)	136	(2.6)	28	(0.5)	5,316	(100.0)
Colorado	47	(0.6)	1,491	(19.2)	2,620	(33.8)	1,583	(20.4)	992	(12.8)	674	(8.7)	329	(4.2)	21	(0.3)	7,757	(100.0)
Connecticut	80	(0.6)	2,671	(19.8)	4,407	(32.7)	2,814	(20.9)	1,872	(13.9)	1,112	(8.3)	371	(2.8)	143	(1.1)	13,470	(100.0)
Delaware§	29	(0.9)	682	(20.9)	1,139	(34.9)	664	(20.3)	431	(13.2)	245	(7.5)	76	(2.3)	0	(0.0)	3,266	(100.0)
District of Columbia	40	(0.7)	1,073	(19.5)	1,804	(32.7)	1,330	(24.1)	775	(14.1)	349	(6.3)	140	(2.5)	0	(0.0)	5,511	(100.0)
Georgia	270	(0.8)	5,042	(14.8)	11,437	(33.5)	8,241	(24.2)	5,441	(16.0)	2,819	(8.3)	841	(2.5)	0	(0.0)	34,091	(100.0)
Hawaii	33	(0.8)	804	(20.5)	1,246	(31.8)	794	(20.3)	551	(14.1)	340	(8.7)	149	(3.8)	3	(0.1)	3,920	(100.0)
Idaho	4	(0.5)	176	(21.2)	259	(31.2)	171	(20.6)	110	(13.3)	73	(8.8)	36	(4.3)	0	(0.0)	829	(100.0)
Illinois¶	321	(0.7)	8,407	(17.9)	15,094	(32.2)	10,766	(22.9)	6,907	(14.7)	3,801	(8.1)	1,352	(2.9)	297	(0.6)	46,945	(100.0)
Indiana	65	(0.6)	1,830	(16.7)	3,881	(35.5)	2,487	(22.7)	1,478	(13.5)	793	(7.3)	284	(2.6)	119	(1.1)	10,937	(100.0)
Iowa§	35	(0.6)	1,177	(18.9)	2,225	(35.7)	1,275	(20.4)	830	(13.3)	502	(8.0)	192	(3.1)	4	(0.1)	6,240	(100.0)
Kansas	88	(0.7)	2,236	(19.0)	4,080	(34.7)	2,520	(21.4)	1,628	(13.8)	883	(7.5)	330	(2.8)	0	(0.0)	11,765	(100.0)
Kentucky	18	(0.5)	530	(15.1)	1,183	(33.8)	794	(22.7)	511	(14.6)	312	(8.9)	108	(3.1)	46	(1.3)	3,502	(100.0)
Louisiana	97	(0.9)	1,765	(16.9)	3,794	(36.3)	2,430	(23.3)	1,325	(12.7)	728	(7.0)	242	(2.3)	70	(0.7)	10,451	(100.0)
Maine	7	(0.3)	483	(20.9)	811	(35.0)	436	(18.8)	297	(12.8)	179	(7.7)	68	(2.9)	34	(1.5)	2,315	(100.0)
Maryland§	65	(0.6)	1,859	(16.0)	3,887	(33.4)	2,664	(22.9)	1,892	(16.2)	1,014	(8.7)	264	(2.3)	0	(0.0)	11,645	(100.0)
Massachusetts	82	(0.3)	3,758	(14.9)	8,171	(32.4)	5,745	(22.8)	3,893	(15.4)	2,493	(9.9)	1,035	(4.1)	72	(0.3)	25,249	(100.0)
Michigan	214	(0.7)	4,859	(16.6)	9,768	(33.4)	6,713	(23.0)	4,440	(15.2)	2,312	(7.9)	804	(2.8)	121	(0.4)	29,231	(100.0)
Minnesota	62	(0.4)	2,192	(15.5)	4,861	(34.3)	3,101	(21.9)	2,227	(15.7)	1,243	(8.8)	501	(3.5)	0	(0.0)	14,187	(100.0)
Mississippi	35	(1.0)	645	(17.9)	1,313	(36.4)	811	(22.5)	447	(12.4)	244	(6.8)	104	(2.9)	6	(0.2)	3,605	(100.0)
Missouri	66	(0.8)	1,355	(16.5)	2,718	(33.1)	1,818	(22.2)	1,229	(15.0)	765	(9.3)	250	(3.0)	0	(0.0)	8,201	(100.0)
Montana	16	(0.7)	494	(22.0)	747	(33.2)	413	(18.4)	302	(13.4)	185	(8.2)	91	(4.0)	0	(0.0)	2,248	(100.0)
Nebraska	23	(0.6)	688	(18.2)	1,319	(34.9)	804	(21.3)	524	(13.9)	298	(7.9)	119	(3.2)	0	(0.0)	3,775	(100.0)
Nevada	25	(0.3)	1,584	(15.9)	2,833	(28.4)	2,168	(21.8)	1,595	(16.0)	936	(9.4)	819	(8.2)	0	(0.0)	9,960	(100.0)
New Jersey**	181	(0.6)	5,694	(17.3)	10,957	(33.4)	7,383	(22.5)	4,773	(14.5)	2,846	(8.7)	984	(3.0)	36	(0.1)	32,854	(100.0)
New Mexico	37	(0.7)	1,061	(20.9)	1,695	(33.4)	1,022	(20.2)	651	(12.8)	373	(7.4)	175	(3.5)	55	(1.1)	5,069	(100.0)
New York	736	(0.6)	22,116	(17.3)	39,073	(30.5)	29,024	(22.7)	20,277	(15.8)	12,062	(9.4)	4,243	(3.3)	452	(0.4)	127,983	(100.0)
City	506	(0.6)	14,706	(16.0)	27,076	(29.5)	21,790	(23.7)	15,285	(16.7)	8,989	(9.8)	3,126	(3.4)	322	(0.4)	91,800	(100.0)
State	230	(0.6)	7,410	(20.5)	11,997	(33.2)	7,234	(20.0)	4,992	(13.8)	3,073	(8.5)	1,117	(3.1)	130	(0.4)	36,183	(100.0)
North Carolina	194	(0.7)	4,591	(15.7)	9,738	(33.3)	6,651	(22.8)	4,210	(14.4)	2,099	(7.2)	741	(2.5)	1,005	(3.4)	29,229	(100.0)
North Dakota	5	(0.4)	261	(21.4)	469	(38.5)	222	(18.2)	132	(10.8)	90	(7.4)	40	(3.3)	0	(0.0)	1,219	(100.0)
Ohio	277	(0.8)	6,098	(17.0)	12,370	(34.5)	7,984	(22.3)	5,205	(14.5)	2,775	(7.7)	967	(2.7)	154	(0.4)	35,830	(100.0)
Oklahoma	40	(0.6)	1,150	(17.7)	2,263	(34.8)	1,392	(21.4)	894	(13.8)	506	(7.8)	200	(3.1)	55	(0.8)	6,500	(100.0)
Oregon	46	(0.3)	2,242	(17.0)	4,462	(33.9)	2,914	(22.1)	1,971	(15.0)	1,098	(8.3)	434	(3.3)	5	(0.0)	13,172	(100.0)
Pennsylvania	269	(0.8)	5,919	(16.8)	11,720	(33.3)	7,769	(22.1)	5,192	(14.8)	3,119	(8.9)	1,178	(3.3)	1	(0.0)	35,167	(100.0)
Rhode Island	30	(0.5)	945	(17.0)	1,963	(35.4)	1,182	(21.3)	781	(14.1)	483	(8.7)	163	(2.9)	3	(0.1)	5,550	(100.0)
South Carolina	35	(0.5)	1,242	(18.7)	2,187	(32.9)	1,561	(23.4)	933	(14.0)	514	(7.7)	185	(2.8)	0	(0.0)	6,657	(100.0)
South Dakota	11	(1.3)	160	(19.4)	266	(32.2)	175	(21.2)	110	(13.3)	82	(9.9)	22	(2.7)	0	(0.0)	826	(100.0)
Tennessee	139	(0.8)	2,827	(15.9)	6,308	(35.4)	4,203	(23.6)	2,548	(14.3)	1,308	(7.4)	432	(2.4)	42	(0.2)	17,807	(100.0)
Texas	284	(0.4)	10,963	(13.7)	26,952	(33.7)	18,175	(22.7)	11,750	(14.7)	6,168	(7.7)	2,469	(3.1)	3,168	(4.0)	79,929	(100.0)
Utah	14	(0.4)	550	(15.6)	1,228	(34.8)	821	(23.3)	483	(13.7)	286	(8.1)	108	(3.1)	34	(1.0)	3,524	(100.0)
Vermont	4	(0.2)	343	(21.0)	549	(33.6)	322	(19.7)	212	(13.0)	141	(8.6)	63	(3.9)	1	(0.1)	1,635	(100.0)
Virginia	129	(0.5)	3,760	(15.0)	8,368	(33.5)	5,718	(22.9)	3,814	(15.3)	2,258	(9.0)	797	(3.2)	148	(0.6)	24,992	(100.0)
Washington	128	(0.5)	4,808	(19.1)	8,397	(33.4)	5,170	(20.6)	3,585	(14.3)	2,162	(8.6)	873	(3.5)	25	(0.1)	25,148	(100.0)
West Virginia	9	(0.4)	359	(17.5)	780	(38.1)	464	(22.6)	245	(12.0)	128	(6.2)	46	(2.2)	18	(0.9)	2,049	(100.0)
Wisconsin§	78	(0.8)	1,832	(17.8)	3,475	(33.7)	2,279	(22.1)	1,433	(13.9)	862	(8.4)	346	(3.4)	0	(0.0)	10,305	(100.0)
Wyoming	0	(0.0)	3	(30.0)	4	(40.0)	1	(10.0)	1	(10.0)	1	(10.0)	0	(0.0)	0	(0.0)	10	(100.0)
<b>Total</b>	<b>4,584</b>	<b>(0.6)</b>	<b>127,793</b>	<b>(16.8)</b>	<b>252,500</b>	<b>(33.1)</b>	<b>171,181</b>	<b>(22.4)</b>	<b>112,584</b>	<b>(14.8)</b>	<b>63,651</b>	<b>(8.3)</b>	<b>23,734</b>	<b>(3.1)</b>	<b>6,770</b>	<b>(0.9)</b>	<b>762,797</b>	<b>(100.0)</b>
<b>Abortion ratio††</b>	<b>753</b>		<b>368</b>		<b>303</b>		<b>200</b>		<b>148</b>		<b>180</b>		<b>310</b>				<b>234</b>	
<b>Abortion rate§§</b>	<b>1</b>		<b>16</b>		<b>31</b>		<b>23</b>		<b>14</b>		<b>7</b>		<b>3</b>				<b>15</b>	

\* Data from 46 states, the District of Columbia, and New York City.

† Percentages might not add to 100.0 because of rounding.

§ Includes residents only.

¶ Unpublished small numbers distributed as the known numbers by using data from public use tape.

\*\* Numbers do not include private physicians' procedures.

†† Calculated as the number of legal abortions obtained by women in a given age group per 1,000 live births to women in the same age group for these states. For each state, data for women of unknown age were distributed according to the known age distribution for that state.

§§ Calculated as the number of legal abortions obtained by women in a given age group per 1,000 women in the same age group for these states. Women aged 13–14 years were used for the denominator for the &lt;15 years age group; women aged 40–44 years were used for the denominator for the ≥40 years age group; and women aged 15–44 years were used for the denominator for the total rate. For each state, data for women of unknown age were distributed according to the known age distribution for that state.

**TABLE 5. Reported legal abortions obtained by adolescents, by known age and state of occurrence — selected states,\* United States, 2002**

State	Age (yrs)										Total			
	<15		15		16		17		18				19	
	No.	(%)	No.	(%)	No.	(%)	No.	(%)	No.	(%)	No.	(%)	No.	(%)†
Alabama	115	(5.1)	154	(6.9)	243	(10.8)	364	(16.2)	598	(26.6)	772	(34.4)	2,246	(100.0)
Arizona	47	(2.3)	122	(6.0)	232	(11.4)	365	(18.0)	575	(28.3)	691	(34.0)	2,032	(100.0)
Arkansas	54	(5.4)	75	(7.5)	105	(10.4)	171	(17.0)	267	(26.5)	334	(33.2)	1,006	(100.0)
Colorado	47	(3.1)	84	(5.5)	219	(14.2)	260	(16.9)	428	(27.8)	500	(32.5)	1,538	(100.0)
Connecticut	80	(2.9)	156	(5.7)	373	(13.6)	596	(21.7)	709	(25.8)	837	(30.4)	2,751	(100.0)
Delaware§	29	(4.1)	48	(6.8)	77	(10.8)	148	(20.8)	178	(25.0)	231	(32.5)	711	(100.0)
District of Columbia	40	(3.6)	65	(5.9)	140	(12.8)	223	(20.3)	315	(28.7)	313	(28.6)	1,096	(100.0)
Georgia	270	(5.1)	328	(6.2)	625	(11.8)	864	(16.3)	1,398	(26.3)	1,827	(34.4)	5,312	(100.0)
Hawaii	33	(3.9)	56	(6.7)	89	(10.6)	179	(21.4)	230	(27.5)	250	(29.9)	837	(100.0)
Idaho	4	(2.2)	7	(3.9)	21	(11.7)	38	(21.1)	54	(30.0)	56	(31.1)	180	(100.0)
Indiana	65	(3.4)	136	(7.2)	224	(11.8)	281	(14.8)	546	(28.8)	643	(33.9)	1,895	(100.0)
Iowa§	35	(2.9)	87	(7.2)	130	(10.7)	196	(16.2)	384	(31.7)	380	(31.4)	1,212	(100.0)
Kansas	88	(3.8)	144	(6.2)	264	(11.4)	389	(16.7)	640	(27.5)	799	(34.4)	2,324	(100.0)
Kentucky	18	(100.0)	0	(0.0)	0	(0.0)	0	(0.0)	0	(0.0)	0	(0.0)	18	(100.0)
Louisiana	97	(5.2)	124	(6.7)	214	(11.5)	307	(16.5)	465	(25.0)	655	(35.2)	1,862	(100.0)
Maine	7	(1.4)	24	(4.9)	77	(15.7)	90	(18.4)	149	(30.4)	143	(29.2)	490	(100.0)
Massachusetts	82	(2.1)	175	(4.6)	365	(9.5)	623	(16.2)	1,172	(30.5)	1,423	(37.1)	3,840	(100.0)
Michigan	214	(4.2)	303	(6.0)	555	(10.9)	865	(17.1)	1,399	(27.6)	1,737	(34.2)	5,073	(100.0)
Minnesota	62	(2.8)	101	(4.5)	226	(10.0)	377	(16.7)	717	(31.8)	771	(34.2)	2,254	(100.0)
Mississippi	35	(5.1)	47	(6.9)	63	(9.3)	108	(15.9)	200	(29.4)	227	(33.4)	680	(100.0)
Missouri	66	(4.6)	74	(5.2)	143	(10.1)	184	(12.9)	424	(29.8)	530	(37.3)	1,421	(100.0)
Montana	16	(3.1)	26	(5.1)	62	(12.2)	112	(22.0)	137	(26.9)	157	(30.8)	510	(100.0)
Nebraska	23	(3.2)	48	(6.8)	95	(13.4)	109	(15.3)	177	(24.9)	259	(36.4)	711	(100.0)
Nevada	25	(1.6)	115	(7.1)	204	(12.7)	316	(19.6)	456	(28.3)	493	(30.6)	1,609	(100.0)
New Jersey¶	181	(3.1)	388	(6.6)	717	(12.2)	1,161	(19.8)	1,584	(27.0)	1,844	(31.4)	5,875	(100.0)
New Mexico	37	(3.4)	70	(6.4)	145	(13.2)	211	(19.2)	299	(27.2)	336	(30.6)	1,098	(100.0)
New York	736	(3.2)	1,545	(6.8)	2,942	(12.9)	4,493	(19.7)	6,102	(26.7)	7,034	(30.8)	22,852	(100.0)
City	506	(3.3)	1,094	(7.2)	1,943	(12.8)	2,979	(19.6)	4,109	(27.0)	4,581	(30.1)	15,212	(100.0)
State	230	(3.0)	451	(5.9)	999	(13.1)	1,514	(19.8)	1,993	(26.1)	2,453	(32.1)	7,640	(100.0)
North Carolina	194	(4.1)	321	(6.7)	553	(11.6)	768	(16.1)	1,310	(27.4)	1,639	(34.3)	4,785	(100.0)
North Dakota	5	(1.9)	15	(5.6)	18	(6.8)	41	(15.4)	89	(33.5)	98	(36.8)	266	(100.0)
Ohio	277	(4.3)	478	(7.5)	769	(12.1)	987	(15.5)	1,743	(27.3)	2,121	(33.3)	6,375	(100.0)
Oklahoma	40	(3.4)	66	(5.5)	113	(9.5)	196	(16.5)	369	(31.0)	406	(34.1)	1,190	(100.0)
Oregon	46	(2.0)	111	(4.9)	273	(11.9)	417	(18.2)	652	(28.5)	789	(34.5)	2,288	(100.0)
Pennsylvania	269	(4.3)	415	(6.7)	685	(11.1)	837	(13.5)	1,820	(29.4)	2,162	(34.9)	6,188	(100.0)
Rhode Island	30	(3.1)	51	(5.2)	92	(9.4)	118	(12.1)	294	(30.2)	390	(40.0)	975	(100.0)
South Carolina	35	(2.7)	83	(6.5)	126	(9.9)	332	(26.0)	311	(24.4)	390	(30.5)	1,277	(100.0)
South Dakota	11	(6.4)	15	(8.8)	17	(9.9)	33	(19.3)	45	(26.3)	50	(29.2)	171	(100.0)
Tennessee	139	(4.7)	204	(6.9)	343	(11.6)	428	(14.4)	849	(28.6)	1,003	(33.8)	2,966	(100.0)
Texas	284	(2.5)	581	(5.2)	1,095	(9.7)	1,694	(15.1)	2,993	(26.6)	4,600	(40.9)	11,247	(100.0)
Utah	14	(2.5)	29	(5.1)	58	(10.3)	82	(14.5)	179	(31.7)	202	(35.8)	564	(100.0)
Vermont	4	(1.2)	21	(6.1)	39	(11.2)	77	(22.2)	102	(29.4)	104	(30.0)	347	(100.0)
Virginia	129	(3.3)	237	(6.1)	391	(10.1)	589	(15.1)	1,116	(28.7)	1,427	(36.7)	3,889	(100.0)
Washington	128	(2.6)	275	(5.6)	613	(12.4)	919	(18.6)	1,365	(27.7)	1,636	(33.1)	4,936	(100.0)
West Virginia	9	(2.4)	25	(6.8)	31	(8.4)	57	(15.5)	109	(29.6)	137	(37.2)	368	(100.0)
Wisconsin§	78	(4.1)	121	(6.3)	218	(11.4)	293	(15.3)	522	(27.3)	678	(35.5)	1,910	(100.0)
Wyoming	0	(0.0)	0	(0.0)	0	(0.0)	1	(33.3)	1	(33.3)	1	(33.3)	3	(100.0)
<b>Total</b>	<b>4,198</b>	<b>(3.5)</b>	<b>7,550</b>	<b>(6.2)</b>	<b>13,984</b>	<b>(11.5)</b>	<b>20,899</b>	<b>(17.2)</b>	<b>33,472</b>	<b>(27.6)</b>	<b>41,075</b>	<b>(33.9)</b>	<b>121,178</b>	<b>(100.0)</b>
<b>Abortion ratio**</b>	<b>746</b>		<b>540</b>		<b>431</b>		<b>358</b>		<b>372</b>		<b>322</b>		<b>369</b>	
<b>Abortion rate††</b>	<b>1</b>		<b>5</b>		<b>9</b>		<b>14</b>		<b>23</b>		<b>28</b>		<b>12</b>	

\* Data from 44 states, the District of Columbia, and New York City.

† Percentages might not add to 100.0 because of rounding.

§ Includes residents only.

¶ Numbers do not include private physicians' procedures.

\*\* Calculated as the number of legal abortions obtained by women of a given age per 1,000 live births to women of the same age for these states. For each state, data for women whose age was unknown were distributed according to the known age distribution for that state.

†† Calculated as the number of legal abortions obtained by women of a given age per 1,000 women of the same age for these states; women aged 13–14 years were used for the denominator for the &lt;15 years age group. For each state, data for women whose age was unknown were distributed according to the known age distribution for that state.

**TABLE 6. Reported legal abortions, by weeks of gestation\* and state of occurrence — selected states, † United States, 2002**

State	Weeks of gestation														Total	
	≤8		9–10		11–12		13–15		16–20		≥21		Unknown			
	No.	(%)	No.	(%)	No.	(%)	No.	(%)	No.	(%)	No.	(%)	No.	(%)	No.	(%) <sup>§</sup>
Alabama <sup>¶</sup>	7,632	(62.3)	2,053	(16.8)	1,111	(9.1)	834	(6.8)	534	(4.4)	80	(0.7)	5	(0.0)	12,249	(100.0)
Arizona <sup>¶</sup>	6,899	(64.6)	1,713	(16.0)	827	(7.7)	660	(6.2)	478	(4.5)	21	(0.2)	79	(0.7)	10,677	(100.0)
Arkansas**	2,982	(56.1)	915	(17.2)	521	(9.8)	445	(8.4)	413	(7.8)	37	(0.7)	3	(0.1)	5,316	(100.0)
Colorado <sup>¶</sup>	4,694	(60.5)	1,397	(18.0)	741	(0.6)	445	(5.7)	238	(3.1)	184	(2.4)	58	(0.7)	7,757	(100.0)
Connecticut <sup>¶</sup>	8,043 <sup>††</sup>	(59.7)	2,441 <sup>††</sup>	(18.1)	1,276 <sup>††</sup>	(9.5)	740	(5.5)	350	(2.6)	40	(0.3)	580	(4.3)	13,470	(100.0)
Delaware <sup>¶§§</sup>	1,742	(53.3)	756	(23.1)	358	(11.0)	268	(8.2)	128	(3.9)	14	(0.4)	0	(0.0)	3,266	(100.0)
District of Columbia	2,564	(46.5)	1,441	(26.1)	611	(11.1)	532	(9.7)	359	(6.5)	0	(0.0)	4	(0.1)	5,511	(100.0)
Georgia	18,788	(55.1)	6,947	(20.4)	3,597	(10.6)	2,188	(6.4)	1,696	(5.0)	875	(2.6)	0	(0.0)	34,091	(100.0)
Hawaii <sup>¶</sup>	1,983	(50.6)	811	(20.7)	464	(11.8)	327	(8.3)	269	(6.9)	37	(0.9)	29	(0.7)	3,920	(100.0)
Idaho <sup>¶</sup>	501	(60.4)	211	(25.5)	87	(10.5)	18	(2.2)	8	(1.0)	3	(0.4)	1	(0.1)	829	(100.0)
Indiana <sup>¶</sup>	7,262	(66.4)	2,216	(20.3)	1,021	(9.3)	169	(1.5)	129	(1.2)	0	(0.0)	140	(1.3)	10,937	(100.0)
Iowa <sup>§§</sup>	4,388	(70.3)	890	(14.3)	560	(9.0)	223	(3.6)	157	(2.5)	2	(0.0)	20	(0.3)	6,240	(100.0)
Kansas <sup>¶</sup>	6,997	(59.5)	1,920	(16.3)	979	(8.3)	742	(6.3)	502	(4.3)	625	(5.3)	0	(0.0)	11,765	(100.0)
Kentucky	1,965	(56.1)	595	(17.0)	363	(10.4)	282	(8.1)	215	(6.1)	64	(1.8)	18	(0.5)	3,502	(100.0)
Louisiana <sup>¶</sup>	5,026	(48.1)	2,194	(21.0)	1,068	(10.2)	1,135	(10.9)	590	(5.6)	292	(2.8)	146	(1.4)	10,451	(100.0)
Maine <sup>¶¶</sup>	1,494	(64.5)	573	(24.8)	183	(7.9)	37	(1.6)	8	(0.3)	3	(0.1)	17	(0.7)	2,315	(100.0)
Michigan	18,123	(62.0)	5,180	(17.7)	2,492	(8.5)	1,986	(6.8)	947	(3.2)	199	(0.7)	304	(1.0)	29,231	(100.0)
Minnesota <sup>¶</sup>	9,071	(63.9)	2,397	(16.9)	1,301	(9.2)	703	(5.0)	601	(4.2)	114	(0.8)	0	(0.0)	14,187	(100.0)
Mississippi	1,844	(51.2)	760	(21.1)	501	(13.9)	292	(8.1)	37	(1.0)	2	(0.1)	169	(4.7)	3,605	(100.0)
Missouri	4,933	(60.2)	1,671	(20.4)	908	(11.1)	376	(4.6)	211	(2.6)	29	(0.4)	73	(0.9)	8,201	(100.0)
Montana <sup>¶</sup>	1,165	(51.8)	479	(21.3)	271	(12.1)	200	(8.9)	118	(5.2)	8	(0.4)	7	(0.3)	2,248	(100.0)
Nevada <sup>¶</sup>	5,942	(59.7)	1,912	(19.2)	994	(10.0)	511	(5.1)	296	(3.0)	53	(0.5)	252	(2.5)	9,960	(100.0)
New Jersey***	18,281	(55.6)	5,696	(17.3)	2,174	(6.6)	2,887	(8.8)	2,440	(7.4)	793	(2.4)	583	(1.8)	32,854	(100.0)
New Mexico <sup>¶¶</sup>	3,044	(60.1)	807	(15.9)	512	(10.1)	308	(6.1)	297	(5.9)	59	(1.2)	42	(0.8)	5,069	(100.0)
New York	71,238	(55.7)	23,328	(18.2)	12,121	(9.5)	6,945	(5.4)	5,984	(4.7)	2,669	(2.1)	5,698	(4.5)	127,983	(100.0)
City	57,459	(62.6)	14,623	(15.9)	7,389	(8.0)	4,560	(5.0)	4,752	(5.2)	1,965	(2.1)	1,052	(1.1)	91,800	(100.0)
State	13,779	(38.1)	8,705	(24.1)	4,732	(13.1)	2,385	(6.6)	1,232	(3.4)	704	(1.9)	4,646	(12.8)	36,183	(100.0)
North Carolina	19,407	(66.4)	3,297	(11.3)	1,801	(6.2)	1,064	(3.6)	313	(1.1)	52	(0.2)	3,295	(11.3)	29,229	(100.0)
North Dakota <sup>¶</sup>	617	(50.6)	267	(21.9)	205	(16.8)	121	(9.9)	8	(0.7)	0	(0.0)	1	(0.1)	1,219	(100.0)
Ohio <sup>¶</sup>	19,755	(55.1)	6,896	(19.2)	3,924	(11.0)	2,598	(7.3)	1,896	(5.3)	706	(2.0)	55	(0.2)	35,830	(100.0)
Oklahoma <sup>¶</sup>	3,982	(61.3)	1,301	(20.0)	660	(10.2)	365	(5.6)	180	(2.8)	12	(0.2)	0	(0.0)	6,500	(100.0)
Oregon <sup>¶</sup>	8,248	(62.6)	2,033	(15.4)	1,110	(8.4)	767	(5.8)	670	(5.1)	282	(2.1)	62	(0.5)	13,172	(100.0)
Pennsylvania	19,860	(56.5)	7,339	(20.9)	3,740	(10.6)	2,402	(6.8)	1,473	(4.2)	353	(1.0)	0	(0.0)	35,167	(100.0)
Rhode Island <sup>¶</sup>	3,661	(66.0)	895	(16.1)	397	(7.2)	356	(6.4)	219	(3.9)	8	(0.1)	14	(0.3)	5,550	(100.0)
South Carolina	4,185	(62.9)	1,469	(22.1)	769	(11.6)	123	(1.8)	30	(0.5)	28	(0.4)	53	(0.8)	6,657	(100.0)
South Dakota <sup>¶</sup>	368	(44.6)	290	(35.1)	130	(15.7)	28	(3.4)	4	(0.5)	4	(0.5)	2	(0.2)	826	(100.0)
Tennessee <sup>¶</sup>	11,551	(64.9)	3,023	(17.0)	2,387	(13.4)	642	(3.6)	89	(0.5)	10	(0.1)	105	(0.6)	17,807	(100.0)
Texas <sup>¶</sup>	49,299	(61.7)	13,427	(16.8)	7,327	(9.2)	4,929	(6.2)	3,307	(4.1)	921	(1.2)	719	(0.9)	79,929	(100.0)
Utah <sup>¶</sup>	2,052	(58.2)	612	(17.4)	262	(7.4)	251	(7.1)	175	(5.0)	0	(0.0)	172	(4.9)	3,524	(100.0)
Vermont	1,108	(67.8)	296	(18.1)	135	(8.3)	86	(5.3)	7	(0.4)	1	(0.1)	2	(0.1)	1,635	(100.0)
Virginia <sup>¶</sup>	17,661	(70.7)	4,295	(17.2)	2,046	(8.2)	577	(2.3)	231	(0.9)	57	(0.2)	125	(0.5)	24,992	(100.0)
Washington <sup>¶</sup>	15,680	(62.4)	4,245	(16.9)	2,188	(8.7)	1,437	(5.7)	998	(4.0)	473	(1.9)	127	(0.5)	25,148	(100.0)
West Virginia**	756	(36.9)	602	(29.4)	340	(16.6)	195	(9.5)	144	(7.0)	10	(0.5)	2	(0.1)	2,049	(100.0)
Wisconsin***§§	5,839	(56.7)	2,005	(19.5)	1,113	(10.8)	686	(6.7)	470	(4.6)	192	(1.9)	0	(0.0)	10,305	(100.0)
Wyoming**	7	(70.0)	3	(30.0)	0	(0.0)	0	(0.0)	0	(0.0)	0	(0.0)	0	(0.0)	10	(100.0)
<b>Total</b>	<b>400,637</b>	<b>(59.3)</b>	<b>121,598</b>	<b>(18.0)</b>	<b>63,575</b>	<b>(9.4)</b>	<b>39,880</b>	<b>(5.9)</b>	<b>27,219</b>	<b>(4.0)</b>	<b>9,312</b>	<b>(1.4)</b>	<b>12,962</b>	<b>(1.9)</b>	<b>675,183</b>	<b>(100.0)</b>

\* Data for legal abortions obtained at ≤8 weeks of gestation are presented in Table 7 by ≤6, 7, and 8 weeks of gestation.

† Data from 42 states, the District of Columbia, and New York City; excludes one state (Nebraska) where gestational age was reported as unknown for &gt;15% of women.

§ Percentages might not add to 100.0 because of rounding.

¶ Weeks of gestation based on physicians' estimates.

\*\* Weeks of gestation based on physicians' estimates only if date of last menstrual period was unknown.

†† Numbers obtained at ≤12 weeks of gestation redistributed.

§§ Includes residents only.

¶¶ Weeks of gestation based on date of last menstrual period only if physicians' estimates were unknown.

\*\*\* Numbers do not include private physicians' procedures.



**TABLE 7. Reported legal abortions obtained at  $\leq 8$  weeks of gestation, by known weeks of gestation and state of occurrence — selected states,\* United States, 2002**

State	Weeks of gestation						Total obtained at $\leq 8$ weeks of gestation	
	$\leq 6$		7		8			
	No.	(%)	No.	(%)	No.	(%)	No.	(%) <sup>†</sup>
Alabama <sup>§</sup>	3,160	(25.8)	2,665	(21.8)	1,807	(14.8)	7,632	(62.3)
Arizona <sup>§</sup>	3,405	(31.9)	1,958	(18.3)	1,536	(14.4)	6,899	(64.6)
Arkansas <sup>¶</sup>	1,500	(28.2)	802	(15.1)	680	(12.8)	2,982	(56.1)
Colorado <sup>§</sup>	2,149	(27.7)	1,320	(17.0)	1,225	(15.8)	4,694	(60.5)
Delaware <sup>§**</sup>	685	(21.0)	544	(16.7)	513	(15.7)	1,742	(53.3)
District of Columbia	451	(8.2)	830	(15.1)	1,283	(23.3)	2,564	(46.5)
Georgia	7,575	(22.2)	5,970	(17.5)	5,243	(15.4)	18,788	(55.1)
Hawaii <sup>§</sup>	520	(13.3)	810	(20.7)	653	(16.7)	1,983	(50.6)
Idaho <sup>§</sup>	168	(20.3)	153	(18.5)	180	(21.7)	501	(60.4)
Indiana <sup>§</sup>	3,646	(33.3)	1,861	(17.0)	1,755	(16.0)	7,262	(66.4)
Iowa <sup>**</sup>	2,597	(41.6)	1,020	(16.3)	771	(12.4)	4,388	(70.3)
Kansas <sup>§</sup>	3,541	(30.1)	1,997	(17.0)	1,459	(12.4)	6,997	(59.5)
Kentucky	745	(21.3)	746	(21.3)	474	(13.5)	1,965	(56.1)
Louisiana <sup>§</sup>	1,461	(14.0)	1,847	(17.7)	1,718	(16.4)	5,026	(48.1)
Maine <sup>††</sup>	477	(20.6)	526	(22.7)	491	(21.2)	1,494	(64.5)
Michigan	8,201	(28.1)	5,097	(17.4)	4,825	(16.5)	18,123	(62.0)
Minnesota <sup>§</sup>	4,033	(28.4)	2,927	(20.6)	2,111	(14.9)	9,071	(63.9)
Mississippi	652	(18.1)	583	(16.2)	609	(16.9)	1,844	(51.2)
Missouri	2,313	(28.2)	1,448	(17.7)	1,172	(14.3)	4,933	(60.2)
Montana <sup>§</sup>	447	(19.9)	324	(14.4)	394	(17.5)	1,165	(51.8)
Nevada <sup>§</sup>	2,679	(26.9)	1,464	(14.7)	1,799	(18.1)	5,942	(59.7)
New Jersey <sup>§§</sup>	7,956	(24.2)	5,055	(15.4)	5,270	(16.0)	18,281	(55.6)
New Mexico <sup>††</sup>	1,530	(30.2)	881	(17.4)	633	(12.5)	3,044	(60.1)
New York	30,106	(23.5)	22,269	(17.4)	18,863	(14.7)	71,238	(55.7)
City	27,331	(29.8)	16,882	(18.4)	13,246	(14.4)	57,459	(62.6)
State	2,775	(7.7)	5,387	(14.9)	5,617	(15.5)	13,779	(38.1)
North Carolina	13,310	(45.5)	3,469	(11.9)	2,628	(9.0)	19,407	(66.4)
North Dakota <sup>§</sup>	150	(12.3)	269	(22.1)	198	(16.2)	617	(50.6)
Ohio <sup>§</sup>	7,724	(21.6)	6,419	(17.9)	5,612	(15.7)	19,755	(55.1)
Oklahoma <sup>§</sup>	1,723	(26.5)	1,241	(19.1)	1,018	(15.7)	3,982	(61.3)
Oregon <sup>§</sup>	4,065	(30.9)	2,229	(16.9)	1,954	(14.8)	8,248	(62.6)
Pennsylvania	8,288	(23.6)	5,534	(15.7)	6,038	(17.2)	19,860	(56.5)
Rhode Island <sup>§</sup>	2,007	(36.2)	963	(17.4)	691	(12.5)	3,661	(66.0)
South Carolina	1,909	(28.7)	1,119	(16.8)	1,157	(17.4)	4,185	(62.9)
South Dakota <sup>§</sup>	44	(5.3)	105	(12.7)	219	(26.5)	368	(44.6)
Tennessee <sup>§</sup>	4,599	(25.8)	4,177	(23.5)	2,775	(15.6)	11,551	(64.9)
Texas <sup>§</sup>	22,525	(28.2)	14,146	(17.7)	12,628	(15.8)	49,299	(61.7)
Utah <sup>§</sup>	865	(24.5)	648	(18.4)	539	(15.3)	2,052	(58.2)
Vermont	488	(29.8)	328	(20.1)	292	(17.9)	1,108	(67.8)
Virginia <sup>§</sup>	8,853	(35.4)	4,427	(17.7)	4,381	(17.5)	17,661	(70.7)
Washington <sup>§</sup>	6,428	(25.6)	5,212	(20.7)	4,040	(16.1)	15,680	(62.4)
West Virginia <sup>¶</sup>	176	(8.6)	248	(12.1)	332	(16.2)	756	(36.9)
Wyoming <sup>¶</sup>	0	(0.0)	4	(40.0)	3	(30.0)	7	(70.0)
<b>Total</b>	<b>173,151</b>	<b>(26.6)</b>	<b>113,635</b>	<b>(17.4)</b>	<b>99,969</b>	<b>(15.3)</b>	<b>386,755</b>	<b>(59.4)</b>

\* Data from 40 states, the District of Columbia, and New York City; excludes one state (Nebraska) where gestational age was reported as unknown for >15% of women, and two states that were included in Table 6 but did not provide component weeks of gestation for abortions obtained at  $\leq 8$  weeks.

† Percentages might not add to total percentage obtained at  $\leq 8$  weeks because of rounding.

§ Weeks of gestation based on physicians' estimates.

¶ Weeks of gestation based on physicians' estimates only if date of last menstrual period was unknown.

\*\* Includes residents only.

†† Weeks of gestation based on date of last menstrual period only if physicians' estimates were unknown.

§§ Numbers do not include private physicians' procedures.

**TABLE 8. Reported legal abortions, by type of procedure and state of occurrence — selected states,\* United States, 2002**

State	Procedure															
	Curettage ≤12 weeks		Curettage >12 weeks		All curettage†		Intrauterine instillation		Medical		Other‡		Unknown		Total	
	No.	(%)	No.	(%)	No.	(%)	No.	(%)	No.	(%)	No.	(%)	No.	(%)	No.	(%)§
Alabama	9,866	(80.5)	1,389	(11.3)	11,257	(91.9)	9	(0.1)	**	(0.0)	938††	(7.7)	45	(0.4)	12,249	(100.0)
Arizona	7,167	(67.1)	1,138	(10.7)	8,361	(78.3)	494	(4.6)	1,816	(17.0)	0	(0.0)	6	(0.1)	10,677	(100.0)
Arkansas	4,398	(82.7)	892	(16.8)	5,293	(99.6)	3	(0.1)	0	(0.0)	0	(0.0)	20	(0.4)	5,316	(100.0)
Colorado	5,837	(75.2)	576	(7.4)	6,439	(83.0)	7	(0.1)	§§	(0.0)	1,042	(13.4)	269	(3.5)	7,757	(100.0)
Connecticut	—¶¶	—	—	—	12,975	(96.3)	2	(0.0)	465	(3.5)	28	(0.2)	0	(0.0)	13,470	(100.0)
Delaware***	2,585	(79.1)	388	(11.9)	2,973	(91.0)	9	(0.3)	279	(8.5)	2	(0.1)	3	(0.1)	3,266	(100.0)
District of Columbia	—	—	—	—	5,130	(93.1)	0	(0.0)	381	(6.9)	0	(0.0)	0	(0.0)	5,511	(100.0)
Georgia	28,754	(84.3)	4,703	(13.8)	33,457	(98.1)	20	(0.1)	**	(0.0)	258††	(0.8)	356	(0.1)	34,091	(100.0)
Hawaii	3,240	(82.7)	626	(15.9)	3,894	(99.3)	2	(0.1)	§§	(0.0)	3	(0.1)	21	(0.5)	3,920	(100.0)
Idaho	799	(96.4)	24	(2.9)	824	(99.4)	2	(0.2)	2	(0.2)	1	(0.1)	0	(0.0)	829	(100.0)
Indiana	9,199	(84.1)	292	(2.7)	9,628	(88.0)	0	(0.0)	0	(0.0)	152	(1.4)	1,157	(10.6)	10,937	(100.0)
Kansas	8,923	(75.8)	1,338	(11.4)	10,261	(87.2)	0	(0.0)	974	(8.3)	530	(4.5)	0	(0.0)	11,765	(100.0)
Kentucky	2,784	(79.5)	557	(15.9)	3,355	(95.8)	0	(0.0)	142	(4.1)	2	(0.1)	3	(0.1)	3,502	(100.0)
Louisiana	7,791	(74.5)	1,892	(8.5)	9,781	(93.6)	0	(0.0)	**	(0.0)	245††	(2.3)	425	(4.1)	10,451	(100.0)
Maine	1,888	(81.6)	28	(1.2)	1,925	(83.2)	0	(0.0)	148	(6.4)	1	(0.0)	241	(10.4)	2,315	(100.0)
Maryland***	—	—	—	—	10,488	(90.1)	2	(0.0)	73	(0.6)	1,080	(9.3)	2	(0.0)	11,645	(100.0)
Massachusetts	—	—	—	—	18,960	(75.1)	3,803	(15.1)	2,482	(9.8)	4	(0.0)	0	(0.0)	25,249	(100.0)
Michigan	24,129	(82.5)	3,077	(10.5)	27,501	(94.1)	14	(0.0)	1,694	(5.8)	12	(0.0)	10	(0.0)	29,231	(100.0)
Minnesota	11,976	(84.4)	1,380	(9.7)	13,356	(94.1)	11	(0.1)	800	(5.6)	20	(0.1)	0	(0.0)	14,187	(100.0)
Mississippi	3,105	(86.1)	324	(8.9)	3,588	(99.5)	7	(0.2)	1	(0.0)	7	(0.1)	2	(0.1)	3,605	(100.0)
Missouri	6,605	(80.5)	606	(7.4)	7,270	(88.6)	0	(0.0)	925	(11.3)	1	(0.0)	5	(0.1)	8,201	(100.0)
Montana	1,884	(83.8)	326	(14.5)	2,217	(98.6)	0	(0.0)	31	(1.4)	0	(0.0)	0	(0.0)	2,248	(100.0)
Nebraska	—	—	—	—	3,674	(97.3)	0	(0.0)	99	(2.6)	2	(0.1)	0	(0.0)	3,775	(100.0)
Nevada	8,671	(87.1)	855	(8.6)	9,761	(98.0)	1	(0.0)	0	(0.0)	0	(0.0)	198	(2.0)	9,960	(100.0)
New Jersey†††	26,062	(79.3)	6,029	(18.4)	32,674	(99.5)	58	(0.2)	103	(0.3)	19	(0.1)	0	(0.0)	32,854	(100.0)
New Mexico	3,984	(78.6)	621	(12.3)	4,617	(91.1)	7	(0.1)	271	(5.3)	0	(0.0)	174	(3.4)	5,069	(100.0)
New York	99,291	(77.0)	14,810	(11.5)	118,985	(92.2)	355	(0.3)	7,504	(5.8)	577	(0.4)	1,583	(1.2)	129,004§§§	(100.0)
City	74,648	(81.3)	10,760	(11.7)	86,197	(93.9)	290	(0.3)	4,519	(4.9)	64	(0.1)	730	(0.8)	91,800	(100.0)
State	24,643	(66.2)	4,050	(10.9)	32,788	(88.1)	65	(0.2)	2,985	(8.0)	513	(1.4)	853	(2.3)	37,204§§§	(100.0)
North Carolina	20,739	(71.0)	1,269	(4.3)	24,693	(84.5)	54	(0.2)	72	(0.2)	4,410	(15.1)	0	(0.0)	29,229	(100.0)
North Dakota	1,089	(89.3)	129	(10.6)	1,219	(100.0)	0	(0.0)	0	(0.0)	0	(0.0)	0	(0.0)	1,219	(100.0)
Ohio	28,014	(77.6)	5,139	(14.2)	33,192	(91.9)	174	(0.5)	2,265	(6.3)	368	(1.0)	118	(0.3)	36,117§§§	(100.0)
Oklahoma	5,331	(82.0)	550	(8.5)	5,881	(90.5)	0	(0.0)	§§	(0.0)	569	(8.8)	50	(0.8)	6,500	(100.0)
Oregon	9,815	(74.5)	1,666	(12.6)	11,535	(87.6)	7	(0.1)	1,620	(12.3)	6	(0.0)	4	(0.0)	13,172	(100.0)
Pennsylvania	28,134	(80.0)	4,017	(11.4)	32,151	(91.4)	148	(0.4)	2,713	(7.7)	155	(0.4)	0	(0.0)	35,167	(100.0)
Rhode Island	4,896	(88.2)	575	(10.4)	5,484	(98.8)	3	(0.1)	54	(1.0)	7	(0.1)	2	(0.0)	5,550	(100.0)
South Carolina	5,699	(85.6)	138	(2.1)	5,882	(88.4)	0	(0.0)	744	(11.2)	29	(0.4)	2	(0.0)	6,657	(100.0)
South Dakota	756	(91.5)	29	(3.5)	787	(95.3)	0	(0.0)	23	(2.8)	2	(0.2)	14	(1.7)	826	(100.0)
Tennessee	14,776	(83.0)	685	(3.8)	15,519	(87.2)	455	(2.6)	11	(0.1)	28	(0.2)	1,794	(10.1)	17,807	(100.0)
Texas	62,855	(78.6)	8,816	(11.0)	72,270	(90.4)	6	(0.0)	6,129	(7.7)	69	(0.1)	1,455	(1.8)	79,929	(100.0)
Utah	2,152	(61.1)	423	(12.0)	2,673	(75.9)	0	(0.0)	851	(24.1)	0	(0.0)	0	(0.0)	3,524	(100.0)
Vermont	1,277	(78.1)	88	(5.4)	1,366	(83.5)	0	(0.0)	266	(16.3)	3	(0.2)	0	(0.0)	1,635	(100.0)
Virginia	22,696	(90.8)	810	(3.2)	23,611	(94.5)	8	(0.0)	1,111	(4.4)	135	(0.5)	127	(0.5)	24,992	(100.0)
Washington	19,960	(79.4)	2,821	(11.3)	22,902	(91.1)	30	(0.1)	2,183	(8.7)	19	(0.1)	14	(0.1)	25,148	(100.0)
West Virginia	1,627	(79.4)	336	(16.4)	1,964	(95.9)	1	(0.0)	65	(3.2)	2	(0.1)	17	(0.8)	2,049	(100.0)
Wyoming	10	(100.0)	0	(0.0)	10	(100.0)	0	(0.0)	0	(0.0)	0	(0.0)	0	(0.0)	10	(100.0)
<b>Total</b>	<b>508,764</b>	<b>(72.6)</b>	<b>69,362</b>	<b>(9.9)</b>	<b>639,783</b>	<b>(91.3)</b>	<b>5,692</b>	<b>(0.8)</b>	<b>36,297</b>	<b>(5.2)</b>	<b>10,726</b>	<b>(1.5)</b>	<b>8,117</b>	<b>(1.2)</b>	<b>700,615</b>	<b>(100.0)</b>

\* Data from 43 states, the District of Columbia, and New York City.

† Includes abortions of unknown gestational age. Therefore, the first two columns might not add to the third.

§ Includes hysterotomy and hysterectomy and procedures reported as "other."

¶ Percentages might not add to 100.0 because of rounding.

\*\* Medical procedures included with "other."

†† Includes medical (nonsurgical) procedures; no separate numbers provided.

§§ Recording area does not collect medical abortions as a separate category on abortion reporting form; unknown whether any medical procedures are included in the "other" category.

¶¶ Not available.

\*\*\* Includes residents only.

††† Numbers do not include private physicians' procedures.

§§§ Does not add to total abortions reported because of certain reported combination procedures.

**TABLE 9. Reported legal abortions, by race of women who obtained an abortion and state of occurrence — selected states,\* United States, 2002**

State	Race								Total	
	White		Black		Other		Unknown			
	No.	(%)	No.	(%)	No.	(%)	No.	(%)	No.	(%)†
Alabama	5,563	(45.4)	6,396	(52.2)	210	(1.7)	80	(0.7)	12,249	(100.0)
Arkansas	3,122	(58.7)	1,868	(35.1)	275	(5.2)	51	(1.0)	5,316	(100.0)
Colorado	6,241	(80.5)	382	(4.9)	608	(7.8)	526	(6.8)	7,757	(100.0)
Delaware§	1,786	(54.7)	1,353	(41.4)	127	(3.9)	0	(0.0)	3,266	(100.0)
District of Columbia	636	(11.5)	3,972	(72.1)	763	(13.8)	140	(2.5)	5,511	(100.0)
Georgia	13,793	(40.5)	18,836	(55.3)	1,462	(4.3)	0	(0.0)	34,091	(100.0)
Hawaii	969	(24.7)	131	(3.3)	2,573	(65.6)	247	(6.3)	3,920	(100.0)
Idaho	769	(92.8)	15	(1.8)	41	(4.9)	4	(0.5)	829	(100.0)
Indiana	6,971	(63.7)	2,954	(27.0)	234	(2.1)	778	(7.1)	10,937	(100.0)
Iowa§	5,043	(80.8)	464	(7.4)	700	(11.2)	33	(0.5)	6,240	(100.0)
Kansas	8,327	(70.8)	2,771	(23.6)	661	(5.6)	6	(0.1)	11,765	(100.0)
Kentucky	2,469	(70.5)	705	(20.1)	238	(6.8)	90	(2.6)	3,502	(100.0)
Louisiana	4,162	(39.8)	5,395	(51.6)	303	(2.9)	591	(5.7)	10,451	(100.0)
Maine	1,982	(85.6)	53	(2.3)	92	(4.0)	188	(8.1)	2,315	(100.0)
Maryland§	3,167	(27.2)	6,280	(53.9)	1,018	(8.7)	1,180	(10.1)	11,645	(100.0)
Massachusetts	13,348	(52.9)	5,388	(21.3)	5,328	(21.1)	1,185	(4.7)	25,249	(100.0)
Minnesota	9,221	(65.0)	2,914	(20.5)	1,781	(12.6)	271	(1.9)	14,187	(100.0)
Mississippi	970	(26.9)	2,605	(72.3)	28	(0.8)	2	(0.1)	3,605	(100.0)
Missouri	4,752	(57.9)	3,040	(37.1)	375	(4.6)	34	(0.4)	8,201	(100.0)
Montana	1,768	(78.6)	18	(0.8)	213	(9.5)	249	(11.1)	2,248	(100.0)
New Jersey¶	10,188	(31.0)	14,588	(44.4)	7,593	(23.1)	485	(1.5)	32,854	(100.0)
New Mexico	4,051	(79.9)	167	(3.3)	727	(14.3)	124	(2.4)	5,069	(100.0)
New York City	38,932	(42.4)	44,790	(48.8)	5,704	(6.2)	2,374	(2.6)	91,800	(100.0)
North Carolina	12,906	(44.2)	12,319	(42.1)	3,032	(10.4)	972	(3.3)	29,229	(100.0)
North Dakota	1,013	(83.1)	25	(2.1)	171	(14.0)	10	(0.8)	1,219	(100.0)
Ohio	20,934	(58.4)	12,689	(35.4)	818	(2.3)	1,389	(3.9)	35,830	(100.0)
Oklahoma	4,395	(67.6)	1,157	(17.8)	948	(14.6)	0	(0.0)	6,500	(100.0)
Oregon	11,059	(84.0)	739	(5.6)	1,083	(8.2)	291	(2.2)	13,172	(100.0)
Pennsylvania	19,542	(55.6)	14,330	(40.7)	1,259	(3.6)	36	(0.1)	35,167	(100.0)
South Carolina	3,705	(55.7)	2,751	(41.3)	201	(3.0)	0	(0.0)	6,657	(100.0)
Tennessee	9,372	(52.6)	7,894	(44.3)	406	(2.3)	135	(0.8)	17,807	(100.0)
Texas	57,413	(71.8)	16,881	(21.1)	3,647	(4.6)	1,988	(2.5)	79,929	(100.0)
Utah	2,629	(74.6)	64	(1.8)	360	(10.2)	471	(13.4)	3,524	(100.0)
Vermont	1,549	(94.7)	30	(1.8)	46	(2.8)	10	(0.6)	1,635	(100.0)
Virginia	11,918	(47.7)	10,275	(41.1)	1,888	(7.6)	911	(3.6)	24,992	(100.0)
West Virginia	1,788	(87.3)	214	(10.4)	34	(1.7)	13	(0.6)	2,049	(100.0)
Wisconsin§	7,047	(68.4)	2,520	(24.5)	**	NA††	738§§	(7.2)§§	10,305	(100.0)
<b>Total</b>	<b>313,500</b>	<b>(54.0)</b>	<b>206,973</b>	<b>(35.6)</b>	<b>44,947</b>	<b>(7.7)</b>	<b>15,602</b>	<b>(2.7)</b>	<b>581,022</b>	<b>(100.0)</b>
<b>Abortion ratio¶¶¶</b>	<b>164</b>		<b>495</b>		<b>357</b>				<b>230</b>	
<b>Abortion rate***</b>	<b>10</b>		<b>29</b>		<b>20</b>				<b>13</b>	

\* Data from 35 states, the District of Columbia, and New York City; excludes seven states (Nebraska, Nevada, New York Upstate, Rhode Island, South Dakota, Washington, and Wyoming) from which race was reported as unknown for >15% of women.

† Percentages might not add to 100.0 because of rounding.

§ Includes residents only.

¶ Numbers do not include private physicians' procedures.

\*\* "Other" included with "unknown."

†† Not applicable.

§§ Includes "other."

¶¶ Calculated as the number of legal abortions obtained by women of a given race per 1,000 live births to women of the same race for these states. For each state, data for women of unknown race were distributed according to the known racial distribution for that state.

\*\*\* Calculated as the number of legal abortions obtained by women of a given race per 1,000 women aged 15–44 years of the same race for these states. For each state, data for women of unknown race were distributed according to the known racial distribution for that state. New York City data were excluded because separate population data were not available for New York City.

**TABLE 10. Reported legal abortions, by ethnicity of women who obtained an abortion and state of occurrence — selected states,\* United States, 2002**

State	Ethnicity						Total	
	Hispanic		Non-Hispanic		Unknown			
	No.	(%)	No.	(%)	No.	(%)	No.	(%) <sup>†</sup>
Alabama	314	(2.6)	11,881	(97.0)	54	(0.4)	12,249	(100.0)
Arkansas	92	(1.7)	5,024	(94.5)	200	(3.8)	5,316	(100.0)
Colorado	1,318	(17.0)	5,852	(75.4)	587	(7.6)	7,757	(100.0)
Delaware <sup>§</sup>	262	(8.0)	2,981	(91.3)	23	(0.7)	3,266	(100.0)
District of Columbia	450	(8.2)	4,502	(81.7)	559	(10.1)	5,511	(100.0)
Georgia	2,130	(6.2)	31,448	(92.2)	513	(1.5)	34,091	(100.0)
Hawaii	195	(5.0)	3,305	(84.3)	420	(10.7)	3,920	(100.0)
Idaho	90	(10.9)	736	(88.8)	3	(0.4)	829	(100.0)
Indiana	651	(6.0)	8,646	(79.1)	1,640	(15.0)	10,937	(100.0)
Kansas	817	(6.9)	10,885	(92.5)	63	(0.5)	11,765	(100.0)
Kentucky	21	(0.6)	3,391	(96.8)	90	(2.6)	3,502	(100.0)
Minnesota	787	(5.5)	13,229	(93.2)	171	(1.2)	14,187	(100.0)
Mississippi	42	(1.2)	3,558	(98.7)	5	(0.1)	3,605	(100.0)
Missouri	163	(2.0)	7,983	(97.3)	55	(0.7)	8,201	(100.0)
New Jersey <sup>¶</sup>	7,972	(24.3)	24,876	(75.7)	6	(0.0)	32,854	(100.0)
New Mexico	2,507	(49.5)	2,228	(44.0)	334	(6.6)	5,069	(100.0)
New York	33,558	(26.2)	87,939	(68.7)	6,486	(5.1)	127,983	(100.0)
City	30,098	(32.8)	59,438	(64.7)	2,264	(2.5)	91,800	(100.0)
State	3,460	(9.6)	28,501	(78.8)	4,222	(11.7)	36,183	(100.0)
Ohio	1,127	(3.1)	34,483	(96.2)	220	(0.6)	35,830	(100.0)
Oregon	1,370	(10.4)	11,786	(89.5)	16	(0.1)	13,172	(100.0)
Pennsylvania	1,830	(5.2)	33,312	(94.7)	25	(0.1)	35,167	(100.0)
South Carolina	245	(3.7)	6,411	(96.3)	1	(0.0)	6,657	(100.0)
Tennessee	552	(3.1)	16,976	(95.3)	279	(1.6)	17,807	(100.0)
Texas	30,163	(37.7)	47,778	(59.8)	1,988	(2.5)	79,929	(100.0)
Utah	553	(15.7)	2,581	(73.2)	390	(11.1)	3,524	(100.0)
Vermont	20	(1.2)	1,608	(98.3)	7	(0.4)	1,635	(100.0)
West Virginia	12	(0.6)	2,033	(99.2)	4	(0.2)	2,049	(100.0)
Wisconsin <sup>§</sup>	743	(7.2)	9,562	(92.8)	0	(0.0)	10,305	(100.0)
Wyoming	3	(30.0)	7	(70.0)	0	(0.0)	10	(100.0)
<b>Total</b>	<b>87,987</b>	<b>(17.7)</b>	<b>395,001</b>	<b>(79.5)</b>	<b>14,139</b>	<b>(2.8)</b>	<b>497,127</b>	<b>(100.0)</b>
<b>Abortion ratio**</b>	<b>233</b>		<b>237</b>				<b>236</b>	
<b>Abortion rate<sup>††</sup></b>	<b>17</b>		<b>13</b>				<b>13</b>	

\* Data from 27 states, the District of Columbia, and New York City; excludes 12 states (Maine, Massachusetts, Montana, Nebraska, Nevada, North Carolina, North Dakota, Oklahoma, Rhode Island, South Dakota, Virginia, and Washington) where ethnicity was reported as unknown for >15% of women.

<sup>†</sup> Percentages might not add to 100.0 because of rounding.

<sup>§</sup> Includes residents only.

<sup>¶</sup> Numbers do not include private physicians' procedures.

\*\* Calculated as the number of legal abortions obtained by women of a given ethnicity per 1,000 live births to women of the same ethnicity for these states. For each state, data for women of unknown ethnicity were distributed according to the known ethnicity distribution for that state.

<sup>††</sup> Calculated as the number of legal abortions obtained by women of a given ethnicity per 1,000 women of the same ethnicity for these states. For each state, data for women of unknown ethnicity were distributed according to the known ethnicity distribution for that state.

**TABLE 11. Reported legal abortions, by marital status of women who obtained an abortion and state of occurrence — selected states,\* United States, 2002**

State	Marital status						Total	
	Married†		Unmarried§		Unknown			
	No.	(%)	No.	(%)	No.	(%)	No.	(%)¶
Alabama	1,716	(14.0)	10,322	(84.3)	211	(1.7)	12,249	(100.0)
Arkansas	990	(18.6)	4,235	(79.7)	91	(1.7)	5,316	(100.0)
Colorado	1,479	(19.1)	6,222	(80.2)	56	(0.7)	7,757	(100.0)
Delaware**	477	(14.6)	2,789	(85.4)	0	(0.0)	3,266	(100.0)
District of Columbia	720	(13.1)	4,261	(77.3)	530	(9.6)	5,511	(100.0)
Georgia	6,214	(18.2)	27,366	(80.3)	511	(1.5)	34,091	(100.0)
Hawaii	731	(18.6)	3,152	(80.4)	37	(0.9)	3,920	(100.0)
Idaho	178	(21.5)	650	(78.4)	1	(0.1)	829	(100.0)
Illinois††	7,641	(16.3)	38,261	(81.5)	1,043	(2.2)	46,945	(100.0)
Indiana	1,538	(14.1)	8,057	(73.7)	1,342	(12.3)	10,937	(100.0)
Iowa**	1,272	(20.4)	4,946	(79.3)	22	(0.4)	6,240	(100.0)
Kansas	2,150	(18.3)	9,601	(81.6)	14	(0.1)	11,765	(100.0)
Kentucky	621	(17.7)	2,881	(82.3)	0	(0.0)	3,502	(100.0)
Massachusetts	4,717	(18.7)	19,830	(78.5)	702	(2.8)	25,249	(100.0)
Michigan	4,264	(14.6)	24,731	(84.6)	236	(0.8)	29,231	(100.0)
Minnesota	2,753	(19.4)	11,219	(79.1)	215	(1.5)	14,187	(100.0)
Mississippi	456	(12.6)	3,134	(86.9)	15	(0.4)	3,605	(100.0)
Missouri	1,633	(19.9)	6,441	(78.5)	127	(1.5)	8,201	(100.0)
Montana	397	(17.7)	1,648	(73.3)	203	(9.0)	2,248	(100.0)
Nevada	2,279	(22.9)	7,293	(73.2)	388	(3.9)	9,960	(100.0)
New Jersey§§	5,458	(16.6)	27,288	(83.1)	108	(0.3)	32,854	(100.0)
New Mexico	756	(14.9)	4,285	(84.5)	28	(0.6)	5,069	(100.0)
New York City	14,476	(15.8)	75,461	(82.2)	1,863	(2.0)	91,800	(100.0)
North Carolina	6,322	(21.6)	21,252	(72.7)	1,655	(5.7)	29,229	(100.0)
North Dakota	202	(16.6)	1,015	(83.3)	2	(0.2)	1,219	(100.0)
Ohio	5,935	(16.6)	29,132	(81.3)	763	(2.1)	35,830	(100.0)
Oklahoma	1,247	(19.2)	5,253	(80.8)	0	(0.0)	6,500	(100.0)
Oregon	3,010	(22.9)	9,985	(75.8)	177	(1.3)	13,172	(100.0)
Pennsylvania	5,564	(15.8)	29,594	(84.2)	9	(0.0)	35,167	(100.0)
South Carolina	1,141	(17.1)	5,516	(82.9)	0	(0.0)	6,657	(100.0)
South Dakota	149	(18.0)	677	(82.0)	0	(0.0)	826	(100.0)
Tennessee	3,163	(17.8)	14,349	(80.6)	295	(1.7)	17,807	(100.0)
Texas	16,485	(20.6)	61,827	(77.4)	1,617	(2.0)	79,929	(100.0)
Utah	807	(22.9)	2,414	(68.5)	303	(8.6)	3,524	(100.0)
Vermont	272	(16.6)	1,248	(76.3)	115	(7.0)	1,635	(100.0)
Virginia	4,719	(18.9)	18,456	(73.8)	1,817	(7.3)	24,992	(100.0)
West Virginia	356	(17.4)	1,640	(80.0)	53	(2.6)	2,049	(100.0)
Wisconsin**	1,768	(17.2)	8,495	(82.4)	42	(0.4)	10,305	(100.0)
Wyoming	1	(10.0)	9	(90.0)	0	(0.0)	10	(100.0)
<b>Total</b>	<b>114,057</b>	<b>(17.7)</b>	<b>514,935</b>	<b>(80.0)</b>	<b>14,591</b>	<b>(2.3)</b>	<b>643,583</b>	<b>(100.0)</b>
<b>Abortion ratio¶¶</b>	<b>65</b>		<b>570</b>				<b>236</b>	

\* Data from 37 states, the District of Columbia, and New York City; excludes six states (Arizona, Louisiana, Maine, Maryland, Nebraska, and Rhode Island) where marital status was reported as unknown for >15% of women.

† Includes married and separated.

§ Includes never married, divorced, and widowed.

¶ Percentages might not add to 100.0 because of rounding.

\*\* Includes residents only.

†† Unpublished small numbers distributed as the known numbers by using data from public use tape.

§§ Numbers do not include private physicians' procedures.

¶¶ Calculated as the number of legal abortions obtained by women of a given marital status per 1,000 live births to women of the same marital status for these states. For each state, data for women of unknown marital status were distributed according to the known marital status distribution for that state.



**TABLE 12. Reported legal abortions, by number of previous live births and state of occurrence — selected states,\* United States, 2002**

State	No. of previous live births													
	0		1		2		3		>4		Unknown		Total	
	No.	(%)	No.	(%)	No.	(%)	No.	(%)	No.	(%)	No.	(%)	No.	(%)†
Alabama	4,796	(39.2)	3,872	(31.6)	2,437	(19.9)	805	(6.6)	313	(2.6)	26	(0.2)	12,249	(100.0)
Arkansas	1,964	(36.9)	1,551	(29.2)	1,159	(21.8)	443	(8.3)	190	(3.6)	9	(0.2)	5,316	(100.0)
Colorado	4,099	(52.8)	1,633	(21.1)	1,245	(16.1)	471	(6.1)	239	(3.1)	70	(0.9)	7,757	(100.0)
Delaware§	1,310	(40.1)	932	(28.5)	619	(19.0)	251	(7.7)	144	(4.4)	10	(0.3)	3,266	(100.0)
Georgia	13,539	(39.7)	9,621	(28.2)	6,870	(20.2)	2,679	(7.9)	1,321	(3.9)	61	(0.2)	34,091	(100.0)
Hawaii	1,910	(48.7)	877	(22.4)	627	(16.0)	276	(7.0)	168	(4.3)	62	(1.6)	3,920	(100.0)
Idaho	398	(48.0)	194	(23.4)	156	(18.8)	49	(5.9)	30	(3.6)	2	(0.2)	829	(100.0)
Indiana	3,800	(34.7)	2,898	(26.5)	2,300	(21.0)	979	(9.0)	500	(4.6)	460	(4.2)	10,937	(100.0)
Iowa§	2,752	(44.1)	1,544	(24.7)	1,230	(19.7)	492	(7.9)	212	(3.4)	10	(0.2)	6,240	(100.0)
Kansas	4,737	(40.3)	3,077	(26.2)	2,420	(20.6)	1,001	(8.5)	530	(4.5)	0	(0.0)	11,765	(100.0)
Kentucky	1,296	(37.0)	1,103	(31.5)	717	(20.5)	256	(7.3)	130	(3.7)	0	(0.0)	3,502	(100.0)
Louisiana	3,732	(35.7)	3,085	(29.5)	2,102	(20.1)	748	(7.2)	356	(3.4)	428	(4.1)	10,451	(100.0)
Maine	1,209	(52.2)	549	(23.7)	377	(16.3)	123	(5.3)	53	(2.3)	4	(0.2)	2,315	(100.0)
Maryland§¶	4,433	(38.1)	3,328	(28.6)	2,469	(21.2)	971	(8.3)	444	(3.8)	0	(0.0)	11,645	(100.0)
Michigan	10,760	(36.8)	8,049	(27.5)	6,366	(21.8)	2,640	(9.0)	1,416	(4.8)	0	(0.0)	29,231	(100.0)
Minnesota	5,854	(41.3)	3,534	(24.9)	2,691	(19.0)	1,220	(8.6)	849	(6.0)	39	(0.3)	14,187	(100.0)
Mississippi	1,258	(34.9)	1,127	(31.3)	800	(22.2)	299	(8.3)	120	(3.3)	1	(0.0)	3,605	(100.0)
Missouri	3,069	(37.4)	2,287	(27.9)	1,731	(21.1)	725	(8.8)	389	(4.7)	0	(0.0)	8,201	(100.0)
Montana	1,097	(48.8)	509	(22.6)	383	(17.0)	176	(7.8)	82	(3.6)	1	(0.0)	2,248	(100.0)
Nebraska	1,592	(42.2)	928	(24.6)	775	(20.5)	311	(8.2)	169	(4.5)	0	(0.0)	3,775	(100.0)
Nevada	3,803	(38.2)	2,351	(23.6)	1,929	(19.4)	864	(8.7)	455	(4.6)	558	(5.6)	9,960	(100.0)
New Jersey**	14,094	(42.9)	8,746	(26.6)	5,991	(18.2)	2,442	(7.4)	1,475	(4.5)	106	(0.3)	32,854	(100.0)
New Mexico	1,805	(35.6)	1,306	(25.8)	994	(19.6)	453	(8.9)	330	(6.5)	181	(3.6)	5,069	(100.0)
New York	52,183	(40.8)	33,152	(25.9)	24,585	(19.2)	10,653	(8.3)	5,817	(4.5)	1,593	(1.2)	127,983	(100.0)
City	33,207	(36.2)	25,753	(28.1)	18,924	(20.6)	8,038	(8.8)	4,889	(5.3)	989	(1.1)	91,800	(100.0)
State	18,976	(52.4)	7,399	(20.4)	5,661	(15.6)	2,615	(7.2)	928	(2.6)	604	(1.7)	36,183	(100.0)
North Dakota	1,204	(98.8)	10	(0.8)	3	(0.2)	1	(0.1)	0	(0.0)	1	(0.1)	1,219	(100.0)
Ohio	10,154	(28.3)	9,970	(27.8)	7,643	(21.3)	2,960	(8.3)	1,576	(4.4)	3,527	(9.8)	35,830	(100.0)
Oklahoma¶	2,491	(38.3)	1,818	(28.0)	1,398	(21.5)	546	(8.4)	174	(2.7)	73	(1.1)	6,500	(100.0)
Oregon	5,671	(43.1)	3,359	(25.5)	2,638	(20.0)	964	(7.3)	511	(3.9)	29	(0.2)	13,172	(100.0)
Pennsylvania	13,741	(39.1)	9,615	(27.3)	7,183	(20.4)	3,025	(8.6)	1,599	(4.5)	4	(0.0)	35,167	(100.0)
Rhode Island¶	2,342	(42.2)	1,543	(27.8)	1,047	(18.9)	401	(7.2)	207	(3.7)	10	(0.2)	5,550	(100.0)
South Carolina	2,821	(42.4)	1,902	(28.6)	1,334	(20.0)	454	(6.8)	146	(2.2)	0	(0.0)	6,657	(100.0)
South Dakota¶	372	(45.0)	206	(24.9)	159	(19.2)	64	(7.7)	25	(3.0)	0	(0.0)	826	(100.0)
Tennessee	6,295	(35.4)	5,442	(30.6)	3,824	(21.5)	1,433	(8.0)	737	(4.1)	76	(0.4)	17,807	(100.0)
Texas	30,387	(38.0)	22,148	(27.7)	16,787	(21.0)	6,854	(8.6)	3,531	(4.4)	222	(0.3)	79,929	(100.0)
Utah	1,371	(38.9)	915	(26.0)	685	(19.4)	322	(9.1)	160	(4.5)	71	(2.0)	3,524	(100.0)
Vermont	927	(56.7)	333	(20.4)	239	(14.6)	86	(5.3)	47	(2.9)	3	(0.2)	1,635	(100.0)
Virginia	9,785	(39.2)	7,003	(28.0)	5,116	(20.5)	1,799	(7.2)	841	(3.4)	448	(1.8)	24,992	(100.0)
Washington	11,445	(45.5)	6,217	(24.7)	4,763	(18.9)	1,830	(7.3)	840	(3.3)	53	(0.2)	25,148	(100.0)
West Virginia	684	(33.4)	667	(32.6)	473	(23.1)	137	(6.7)	67	(3.3)	21	(1.0)	2,049	(100.0)
Wyoming	5	(50.0)	3	(30.0)	0	(0.0)	0	(0.0)	1	(10.0)	1	(10.0)	10	(100.0)
<b>Total</b>	<b>245,185</b>	<b>(39.5)</b>	<b>167,404</b>	<b>(26.9)</b>	<b>124,265</b>	<b>(20.0)</b>	<b>50,203</b>	<b>(8.1)</b>	<b>26,194</b>	<b>(4.2)</b>	<b>8,160</b>	<b>(1.3)</b>	<b>621,411</b>	<b>(100.0)</b>
<b>Abortion ratio††</b>	<b>233</b>		<b>194</b>		<b>279</b>		<b>291</b>		<b>236</b>				<b>232</b>	

\* Data from 40 states and New York City; excludes three states (Arizona, Massachusetts, and North Carolina) where number of previous live births was reported as unknown for >15% of women.

† Percentages might not add to 100.0 because of rounding.

§ Includes residents only.

¶ Indicates number of living children.

\*\* Numbers do not include private physicians' procedures.

†† Calculated as the number of legal abortions obtained by women with a given number of previous live births per 1,000 live births to women with the same number of previous live births for these states. For each state, data for women whose number of previous live births was unknown were distributed according to the known number of previous live births for that state.

**TABLE 13. Reported legal abortions, by number of previous legal induced abortions and state of occurrence — selected states,\* United States, 2002**

State	No. previous induced abortions								Total			
	0		1		2		≥3		Unknown		No.	(%) <sup>†</sup>
Alabama	7,895	(64.5)	2,999	(24.5)	946	(7.7)	379	(3.1)	30	(0.2)	<b>12,249</b>	<b>(100.0)</b>
Arkansas	3,266	(61.4)	1,400	(26.3)	437	(8.2)	194	(3.6)	19	(0.4)	<b>5,316</b>	<b>(100.0)</b>
Colorado	5,043	(65.0)	1,879	(24.2)	563	(7.3)	203	(2.6)	69	(0.9)	<b>7,757</b>	<b>(100.0)</b>
Delaware <sup>§</sup>	1,855	(56.8)	839	(25.7)	342	(10.5)	227	(7.0)	3	(0.1)	<b>3,266</b>	<b>(100.0)</b>
Georgia	20,599	(60.4)	8,666	(25.4)	3,066	(9.0)	1,628	(4.8)	132	(0.4)	<b>34,091</b>	<b>(100.0)</b>
Hawaii	2,195	(56.0)	963	(24.6)	399	(10.2)	307	(7.8)	56	(1.4)	<b>3,920</b>	<b>(100.0)</b>
Idaho	627	(75.6)	149	(18.0)	39	(4.7)	12	(1.4)	2	(0.2)	<b>829</b>	<b>(100.0)</b>
Indiana	6,618	(60.5)	2,689	(24.6)	884	(8.1)	397	(3.6)	349	(3.2)	<b>10,937</b>	<b>(100.0)</b>
Iowa <sup>§</sup>	3,920	(62.8)	1,599	(25.6)	471	(7.5)	246	(3.9)	4	(0.1)	<b>6,240</b>	<b>(100.0)</b>
Kansas	7,024	(59.7)	3,083	(26.2)	1,129	(9.6)	528	(4.5)	1	(0.0)	<b>11,765</b>	<b>(100.0)</b>
Kentucky	1,916	(54.7)	898	(25.6)	403	(11.5)	285	(8.1)	0	(0.0)	<b>3,502</b>	<b>(100.0)</b>
Maine	1,532	(66.2)	583	(25.2)	145	(6.3)	51	(2.2)	4	(0.2)	<b>2,315</b>	<b>(100.0)</b>
Maryland <sup>§</sup>	3,316	(28.5)	4,112	(35.3)	2,310	(19.8)	1,907	(16.4)	0	(0.0)	<b>11,645</b>	<b>(100.0)</b>
Massachusetts	12,506	(49.5)	6,333	(25.1)	2,898	(11.5)	1,940	(7.7)	1,572	(6.2)	<b>25,249</b>	<b>(100.0)</b>
Michigan	14,861	(50.8)	7,610	(26.0)	3,829	(13.1)	2,931	(10.0)	0	(0.0)	<b>29,231</b>	<b>(100.0)</b>
Minnesota	8,412	(59.3)	3,509	(24.7)	1,349	(9.5)	917	(6.5)	0	(0.0)	<b>14,187</b>	<b>(100.0)</b>
Mississippi	2,361	(65.5)	899	(24.9)	272	(7.5)	72	(2.0)	1	(0.0)	<b>3,605</b>	<b>(100.0)</b>
Missouri	4,666	(56.9)	2,210	(26.9)	885	(10.8)	440	(5.4)	0	(0.0)	<b>8,201</b>	<b>(100.0)</b>
Montana	1,251	(55.6)	591	(26.3)	254	(11.3)	151	(6.7)	1	(0.0)	<b>2,248</b>	<b>(100.0)</b>
Nebraska	2,621	(69.4)	762	(20.2)	237	(6.3)	155	(4.1)	0	(0.0)	<b>3,775</b>	<b>(100.0)</b>
Nevada	5,183	(52.0)	2,568	(25.8)	1,097	(11.0)	693	(7.0)	419	(4.2)	<b>9,960</b>	<b>(100.0)</b>
New Jersey <sup>¶</sup>	22,005	(67.0)	5,595	(17.0)	2,840	(8.6)	2,308	(7.0)	106	(0.3)	<b>32,854</b>	<b>(100.0)</b>
New Mexico	3,130	(61.7)	1,000	(19.7)	328	(6.5)	162	(3.2)	449	(8.9)	<b>5,069</b>	<b>(100.0)</b>
New York	60,629	(47.4)	31,438	(24.6)	17,892	(14.0)	15,365	(12.0)	2,659	(2.1)	<b>127,983</b>	<b>(100.0)</b>
City	38,373	(41.8)	23,660	(25.8)	14,353	(15.6)	13,882	(15.1)	1,532	(1.7)	<b>91,800</b>	<b>(100.0)</b>
State	22,256	(61.5)	7,778	(21.5)	3,539	(9.8)	1,483	(4.1)	1,127	(3.1)	<b>36,183</b>	<b>(100.0)</b>
North Dakota	876	(71.9)	247	(20.3)	61	(5.0)	33	(2.7)	2	(0.2)	<b>1,219</b>	<b>(100.0)</b>
Ohio	15,781	(44.0)	9,263	(25.9)	3,784	(10.6)	2,427	(6.8)	4,575	(12.8)	<b>35,830</b>	<b>(100.0)</b>
Oklahoma	4,022	(61.9)	1,655	(25.5)	529	(8.1)	294	(4.5)	0	(0.0)	<b>6,500</b>	<b>(100.0)</b>
Oregon	7,239	(55.0)	3,543	(26.9)	1,402	(10.6)	954	(7.2)	34	(0.3)	<b>13,172</b>	<b>(100.0)</b>
Pennsylvania	19,326	(55.0)	9,314	(26.5)	4,025	(11.4)	2,497	(7.1)	5	(0.0)	<b>35,167</b>	<b>(100.0)</b>
Rhode Island	3,001	(54.1)	1,450	(26.1)	660	(11.9)	416	(7.5)	23	(0.4)	<b>5,550</b>	<b>(100.0)</b>
South Carolina	4,072	(61.2)	1,759	(26.4)	567	(8.5)	259	(3.9)	0	(0.0)	<b>6,657</b>	<b>(100.0)</b>
South Dakota	749	(90.7)	60	(7.3)	12	(1.5)	5	(0.6)	0	(0.0)	<b>826</b>	<b>(100.0)</b>
Tennessee	9,207	(51.7)	4,760	(26.7)	2,211	(12.4)	1,546	(8.7)	83	(0.5)	<b>17,807</b>	<b>(100.0)</b>
Texas	46,722	(58.5)	21,121	(26.4)	7,709	(9.6)	4,025	(5.0)	352	(0.4)	<b>79,929</b>	<b>(100.0)</b>
Utah	2,280	(64.7)	797	(22.6)	247	(7.0)	200	(5.7)	0	(0.0)	<b>3,524</b>	<b>(100.0)</b>
Vermont	976	(59.7)	432	(26.4)	142	(8.7)	84	(5.1)	1	(0.1)	<b>1,635</b>	<b>(100.0)</b>
Virginia	13,470	(53.9)	7,109	(28.4)	2,763	(11.1)	1,332	(5.3)	318	(1.3)	<b>24,992</b>	<b>(100.0)</b>
Washington	13,310	(52.9)	6,805	(27.1)	3,017	(12.0)	1,934	(7.7)	82	(0.3)	<b>25,148</b>	<b>(100.0)</b>
West Virginia	1,314	(64.1)	492	(24.0)	143	(7.0)	80	(3.9)	20	(1.0)	<b>2,049</b>	<b>(100.0)</b>
<b>Total</b>	<b>345,776</b>	<b>(54.4)</b>	<b>161,181</b>	<b>(25.3)</b>	<b>70,287</b>	<b>(11.0)</b>	<b>47,584</b>	<b>(7.5)</b>	<b>11,371</b>	<b>(1.8)</b>	<b>636,199</b>	<b>(100.0)</b>

\* Data from 39 states and New York City; excludes four areas (Arizona, District of Columbia, North Carolina, and Wyoming) where number of previous induced abortions was reported as unknown for >15% of women.

<sup>†</sup> Percentages might not add to 100.0 because of rounding.

<sup>§</sup> Includes residents only.

<sup>¶</sup> Numbers do not include private physicians' procedures.

**TABLE 14. Reported legal abortions, by known race, age group, and marital status of women who obtained an abortion — selected states, United States, 2002**

Characteristic	Race						Total	
	White		Black		Other			
	No.	(%)	No.	(%)	No.	(%)	No.	(%)
<b>Age group (yrs)</b>								
<15	1,382	(0.5)	1,750	(0.9)	144	(0.4)	<b>3,276</b>	<b>(0.6)</b>
15–19	51,030	(17.2)	31,410	(16.0)	4,956	(12.9)	<b>87,396</b>	<b>(16.5)</b>
20–24	100,304	(33.8)	66,867	(34.1)	11,377	(29.6)	<b>178,548</b>	<b>(33.6)</b>
25–29	64,142	(21.6)	48,488	(24.7)	9,088	(23.6)	<b>121,718</b>	<b>(22.9)</b>
30–34	43,265	(14.6)	29,312	(14.9)	6,891	(17.9)	<b>79,468</b>	<b>(15.0)</b>
35–39	25,959	(8.8)	14,204	(7.2)	4,315	(11.2)	<b>44,478</b>	<b>(8.4)</b>
≥40	10,244	(3.5)	4,167	(2.1)	1,693	(4.4)	<b>16,104</b>	<b>(3.0)</b>
<b>Total*</b>	<b>296,326</b>	<b>(100.0)</b>	<b>196,198</b>	<b>(100.0)</b>	<b>38,464</b>	<b>(100.0)</b>	<b>530,988</b>	<b>(100.0)</b>
<b>Marital status</b>								
Married	57,833	(20.3)	20,856	(11.4)	13,059	(35.7)	<b>91,748</b>	<b>(18.2)</b>
Unmarried	226,688	(79.7)	161,511	(88.6)	23,551	(64.3)	<b>411,750</b>	<b>(81.8)</b>
<b>Total†</b>	<b>284,521</b>	<b>(100.0)</b>	<b>182,367</b>	<b>(100.0)</b>	<b>36,610</b>	<b>(100.0)</b>	<b>503,498</b>	<b>(100.0)</b>

\* Data from 34 states and New York City; excludes seven states (Nebraska, Nevada, New York Upstate, Rhode Island, South Dakota, Washington, and Wyoming) where race was reported as unknown for >15% of women. Percentages might not add to 100.0 because of rounding.

† Data from 31 states and New York City; excludes seven states (Louisiana, Maine, Nebraska, Nevada, Rhode Island, South Dakota, and Wyoming) where race or marital status was reported as unknown for >15% of women.

**TABLE 15. Reported legal abortions, by known ethnicity, age group, and marital status of women who obtained an abortion — selected states, United States, 2002**

Characteristic	Ethnicity				Total	
	Hispanic		Non-Hispanic			
	No.	(%)	No.	(%)	No.	(%)
<b>Age group (yrs)</b>						
<15	470	(0.5)	2,462	(0.6)	<b>2,932</b>	<b>(0.6)</b>
15–19	13,621	(15.8)	65,537	(16.9)	<b>79,158</b>	<b>(16.7)</b>
20–24	30,013	(34.8)	128,463	(33.1)	<b>158,476</b>	<b>(33.4)</b>
25–29	21,020	(24.4)	87,067	(22.5)	<b>108,087</b>	<b>(22.8)</b>
30–34	12,526	(14.5)	58,355	(15.0)	<b>70,881</b>	<b>(15.0)</b>
35–39	6,429	(7.5)	33,511	(8.6)	<b>39,940</b>	<b>(8.4)</b>
≥40	2,155	(2.5)	12,417	(3.2)	<b>14,572</b>	<b>(3.1)</b>
<b>Total*</b>	<b>86,234</b>	<b>(100.0)</b>	<b>387,812</b>	<b>(100.0)</b>	<b>474,046</b>	<b>(100.0)</b>
<b>Marital status</b>						
Married	16,163	(19.7)	62,248	(17.5)	<b>78,411</b>	<b>(17.9)</b>
Unmarried	66,039	(80.3)	294,276	(82.5)	<b>360,315</b>	<b>(82.1)</b>
<b>Total†</b>	<b>82,202</b>	<b>(100.0)</b>	<b>356,524</b>	<b>(100.0)</b>	<b>438,726</b>	<b>(100.0)</b>

\* Data from 27 states and New York City; excludes 11 states (Maine, Montana, Nebraska, Nevada, North Carolina, North Dakota, Oklahoma, Rhode Island, South Dakota, Virginia, and Washington) where ethnicity was reported as unknown for >15% of women.

† Data from 26 states and New York City; excludes 10 states (Maine, Montana, Nebraska, Nevada, North Carolina, North Dakota, Oklahoma, Rhode Island, South Dakota, and Virginia) where ethnicity or marital status was reported as unknown for >15% of women.

**TABLE 16. Reported legal abortions, by known weeks of gestation, age group, race, and ethnicity of women who obtained an abortion — selected states, United States, 2002**

Characteristic	Weeks of gestation										Total			
	<8		9–10		11–12		13–15		16–20				≥21	
	No.	(%)	No.	(%)	No.	(%)	No.	(%)	No.	(%)	No.	(%)	No.	(%)*
<b>Age group (yrs)</b>														
<15	1,500	(38.6)	842	(21.7)	559	(14.4)	430	(11.1)	347	(8.9)	203	(5.2)	<b>3,881</b>	<b>(100.0)</b>
15–19	54,644	(51.0)	21,996	(20.5)	13,010	(12.1)	8,805	(8.2)	6,270	(5.9)	2,432	(2.3)	<b>107,157</b>	<b>(100.0)</b>
20–24	125,791	(58.8)	40,506	(18.9)	21,767	(10.2)	13,973	(6.5)	8,989	(4.2)	2,885	(1.3)	<b>213,911</b>	<b>(100.0)</b>
25–29	92,734	(64.2)	25,342	(17.5)	12,528	(8.7)	7,535	(5.2)	4,760	(3.3)	1,601	(1.1)	<b>144,500</b>	<b>(100.0)</b>
30–34	62,903	(66.2)	15,988	(16.8)	7,551	(8.0)	4,336	(4.6)	3,043	(3.2)	1,129	(1.2)	<b>94,950</b>	<b>(100.0)</b>
35–39	35,445	(66.2)	8,847	(16.5)	4,102	(7.7)	2,421	(4.5)	1,974	(3.7)	720	(1.3)	<b>53,509</b>	<b>(100.0)</b>
≥40	13,478	(67.3)	3,167	(15.8)	1,465	(7.3)	825	(4.1)	831	(4.2)	254	(1.3)	<b>20,020</b>	<b>(100.0)</b>
<b>Total†</b>	<b>386,495</b>	<b>(60.6)</b>	<b>116,688</b>	<b>(18.3)</b>	<b>60,982</b>	<b>(9.6)</b>	<b>38,325</b>	<b>(6.0)</b>	<b>26,214</b>	<b>(4.1)</b>	<b>9,224</b>	<b>(1.4)</b>	<b>637,928</b>	<b>(100.0)</b>
<b>Race</b>														
White	181,080	(63.3)	49,344	(17.2)	25,268	(8.8)	15,617	(5.5)	11,003	(3.8)	3,741	(1.3)	<b>286,053</b>	<b>(100.0)</b>
Black	106,625	(57.2)	35,748	(19.2)	19,975	(10.7)	12,350	(6.6)	8,650	(4.6)	2,959	(1.6)	<b>186,307</b>	<b>(100.0)</b>
Other	24,798	(66.7)	5,688	(15.3)	2,471	(6.6)	1,997	(5.4)	1,655	(4.4)	585	(1.6)	<b>37,194</b>	<b>(100.0)</b>
<b>Total§</b>	<b>312,503</b>	<b>(61.3)</b>	<b>90,780</b>	<b>(17.8)</b>	<b>47,714</b>	<b>(9.4)</b>	<b>29,964</b>	<b>(5.9)</b>	<b>21,308</b>	<b>(4.2)</b>	<b>7,285</b>	<b>(1.4)</b>	<b>509,554</b>	<b>(100.0)</b>
<b>Ethnicity</b>														
Hispanic	52,190	(60.8)	15,273	(17.8)	7,845	(9.1)	5,417	(6.3)	3,867	(4.5)	1,220	(1.4)	<b>85,812</b>	<b>(100.0)</b>
Non-Hispanic	221,518	(58.8)	70,711	(18.8)	37,789	(10.0)	23,212	(6.2)	17,062	(4.5)	6,350	(1.7)	<b>376,642</b>	<b>(100.0)</b>
<b>Total¶</b>	<b>273,708</b>	<b>(59.2)</b>	<b>85,984</b>	<b>(18.6)</b>	<b>45,634</b>	<b>(9.9)</b>	<b>28,629</b>	<b>(6.2)</b>	<b>20,929</b>	<b>(4.5)</b>	<b>7,570</b>	<b>(1.6)</b>	<b>462,454</b>	<b>(100.0)</b>

\* Percentages might not add to 100.0 because of rounding.

† Data from 41 states and New York City; excludes one state (Nebraska) in which gestational age was reported as unknown for >15% of women.

§ Data from 32 states and New York City; excludes seven states (Nebraska, Nevada, New York Upstate, Rhode Island, South Dakota, Washington, and Wyoming) in which gestational age or race was reported as unknown for >15% of women.

¶ Data from 26 states and New York City; excludes 11 states (Maine, Montana, Nebraska, Nevada, North Carolina, North Dakota, Oklahoma, Rhode Island, South Dakota, Virginia, and Washington) in which gestational age or ethnicity was reported as unknown for >15% of women.

**TABLE 17. Reported legal abortions obtained at ≤8 weeks of gestation, by known weeks of gestation, age group, race, and ethnicity of women who obtained an abortion — selected states, United States, 2002**

Characteristic	Weeks of gestation						Total	
	<6		7		8			
	No.	(%)	No.	(%)	No.	(%)	No.	(%)*
<b>Age group (yrs)</b>								
<15	586	(15.4)	398	(10.5)	488	(12.8)	<b>1,472</b>	<b>(38.7)</b>
15–19	21,923	(20.8)	15,964	(15.2)	15,874	(15.1)	<b>53,761</b>	<b>(51.0)</b>
20–24	54,690	(26.0)	36,529	(17.4)	32,654	(15.5)	<b>123,873</b>	<b>(58.9)</b>
25–29	42,241	(29.7)	26,706	(18.8)	22,423	(15.8)	<b>91,370</b>	<b>(64.2)</b>
30–34	29,040	(31.1)	18,335	(19.6)	14,653	(15.7)	<b>62,028</b>	<b>(66.3)</b>
35–39	16,239	(30.8)	10,122	(19.2)	8,527	(16.2)	<b>34,888</b>	<b>(66.3)</b>
≥40	6,384	(32.4)	3,741	(19.0)	3,139	(16.0)	<b>13,264</b>	<b>(67.4)</b>
<b>Total†</b>	<b>171,103</b>	<b>(27.3)</b>	<b>111,795</b>	<b>(17.8)</b>	<b>97,758</b>	<b>(15.6)</b>	<b>380,656</b>	<b>(60.7)</b>
<b>Race</b>								
White	86,087	(30.1)	51,389	(18.0)	43,604	(15.2)	<b>181,080</b>	<b>(63.3)</b>
Black	44,910	(24.1)	32,487	(17.4)	29,228	(15.7)	<b>106,625</b>	<b>(57.2)</b>
Other	12,743	(34.3)	6,727	(18.1)	5,328	(14.3)	<b>24,798</b>	<b>(66.7)</b>
<b>Total§</b>	<b>143,740</b>	<b>(28.2)</b>	<b>90,603</b>	<b>(17.8)</b>	<b>78,160</b>	<b>(15.3)</b>	<b>312,503</b>	<b>(61.3)</b>
<b>Ethnicity</b>								
Hispanic	23,587	(27.5)	15,268	(17.8)	13,335	(15.5)	<b>52,190</b>	<b>(60.8)</b>
Non-Hispanic	94,490	(25.1)	67,918	(18.0)	59,110	(15.7)	<b>221,518</b>	<b>(58.8)</b>
<b>Total¶</b>	<b>118,077</b>	<b>(25.5)</b>	<b>83,186</b>	<b>(18.0)</b>	<b>72,445</b>	<b>(15.7)</b>	<b>273,708</b>	<b>(59.2)</b>

\* Percentages were calculated using the total number of abortions obtained at all known weeks of gestation. Percentages might not add to the percentage obtained at ≤8 weeks of gestation because fewer states are included in some of the variables. In addition, percentages might not add to the total percentage because of rounding.

† Data from 40 states and New York City; excludes one state (Nebraska) in which gestational age was reported as unknown for >15% of women.

§ Data from 32 states and New York City; excludes seven states (Nebraska, Nevada, New York Upstate, Rhode Island, South Dakota, Washington, and Wyoming) in which gestational age or race was reported as unknown for >15% of women.

¶ Data from 26 states and New York City; excludes 11 states (Maine, Montana, Nebraska, Nevada, North Carolina, North Dakota, Oklahoma, Rhode Island, South Dakota, Virginia, and Washington) in which gestational age or ethnicity was reported as unknown for >15% of women.

**TABLE 18. Reported legal abortions, by known weeks of gestation and types of procedures — selected states,\* United States, 2002**

Type of procedure	Weeks of gestation										Total			
	≤8		9–10		11–12		13–15		16–20				≥21	
	No.	(%)	No.	(%)	No.	(%)	No.	(%)	No.	(%)	No.	(%)	No.	(%)
Curettage (suction or sharp) <sup>†</sup>	337,189	(89.8)	112,505	(98.7)	59,070	(99.1)	37,129	(99.1)	24,532	(95.7)	7,701	(85.6)	<b>578,126</b>	<b>(93.1)</b>
Intrauterine instillation	909	(0.2)	150	(0.1)	78	(0.1)	69	(0.2)	442	(1.7)	146	(1.6)	<b>1,794</b>	<b>(0.3)</b>
Medical <sup>§</sup>	30,414	(8.1)	868	(0.8)	200	(0.3)	84	(0.2)	348	(1.4)	302	(3.4)	<b>32,216</b>	<b>(5.2)</b>
Other <sup>¶</sup>	6,854	(1.8)	460	(0.4)	256	(0.4)	191	(0.5)	314	(1.2)	849	(9.4)	<b>8,924</b>	<b>(1.4)</b>
<b>Total**</b>	<b>375,366</b>	<b>(100.0)</b>	<b>113,983</b>	<b>(100.0)</b>	<b>59,604</b>	<b>(100.0)</b>	<b>37,473</b>	<b>(100.0)</b>	<b>25,636</b>	<b>(100.0)</b>	<b>8,998</b>	<b>(100.0)</b>	<b>621,060</b>	<b>(100.0)</b>

\* Data from 39 states and New York City; excludes one state (Nebraska) where gestational age was reported as unknown for >15% of women.

<sup>†</sup> Includes dilatation and evacuation.

<sup>§</sup> Medical (nonsurgical) procedures differed by weeks of gestation (i.e., methotrexate and misoprostol or mifepristone and misoprostol were reported for abortions performed at ≤8 weeks' gestation; vaginal prostaglandins were primarily reported for abortions performed at later weeks of gestation).

<sup>¶</sup> Includes hysterotomy and hysterectomy and procedures reported as "other."

\*\* Percentages might not add to 100.0 because of rounding.







The *Morbidity and Mortality Weekly Report (MMWR)* Series is prepared by the Centers for Disease Control and Prevention (CDC) and is available free of charge in electronic format and on a paid subscription basis for paper copy. To receive an electronic copy each week, send an e-mail message to [listserv@listserv.cdc.gov](mailto:listserv@listserv.cdc.gov). The body content should read *SUBscribe mmwr-toc*. Electronic copy also is available from CDC's World-Wide Web server at <http://www.cdc.gov/mmwr> or from CDC's file transfer protocol server at <ftp://ftp.cdc.gov/pub/publications/mmwr>. To subscribe for paper copy, contact Superintendent of Documents, U.S. Government Printing Office, Washington, DC 20402; telephone 202-512-1800.

Data in the weekly *MMWR* are provisional, based on weekly reports to CDC by state health departments. The reporting week concludes at close of business on Friday; compiled data on a national basis are officially released to the public on the following Friday. Address inquiries about the *MMWR* Series, including material to be considered for publication, to Editor, *MMWR* Series, Mailstop K-95, CDC, 1600 Clifton Rd., N.E., Atlanta, GA 30333; telephone 888-232-3228.

All material in the *MMWR* Series is in the public domain and may be used and reprinted without permission; citation as to source, however, is appreciated.

All *MMWR* references are available on the Internet at <http://www.cdc.gov/mmwr>. Use the search function to find specific articles.

Use of trade names and commercial sources is for identification only and does not imply endorsement by the U.S. Department of Health and Human Services.

References to non-CDC sites on the Internet are provided as a service to *MMWR* readers and do not constitute or imply endorsement of these organizations or their programs by CDC or the U.S. Department of Health and Human Services. CDC is not responsible for the content of these sites. URL addresses listed in *MMWR* were current as of the date of publication.