



MMWRTM

Morbidity and Mortality Weekly Report

Surveillance Summaries

November 29, 2002 / Vol. 51 / No. SS-9

Abortion Surveillance — United States, 1999

CENTERS FOR DISEASE CONTROL AND PREVENTION

SAFER • HEALTHIER • PEOPLETM

The *MMWR* series of publications is published by the Epidemiology Program Office, Centers for Disease Control and Prevention (CDC), U.S. Department of Health and Human Services, Atlanta, GA 30333.

SUGGESTED CITATION

General: Centers for Disease Control and Prevention. *Surveillance Summaries*, November 29, 2002. MMWR 2002;51(No. SS-9).

Specific: [Author(s)]. [Title of particular article]. In: *Surveillance Summaries*, November 29, 2002. MMWR 2002;51(No. SS-9):[inclusive page numbers].

Centers for Disease Control and Prevention

Julie L. Gerberding, M.D., M.P.H.
Director

David W. Fleming, M.D.
Deputy Director for Science and Public Health

Dixie E. Snider, Jr., M.D., M.P.H.
Associate Director for Science

Epidemiology Program Office

Stephen B. Thacker, M.D., M.Sc.
Director

Division of Public Health Surveillance and Informatics

Daniel M. Sosin, M.D., M.P.H.
Director
Associate Editor, Surveillance Summaries

Office of Scientific and Health Communications

John W. Ward, M.D.
Director
Editor, MMWR Series

Suzanne M. Hewitt, M.P.A.
Managing Editor

Lynne McIntyre, M.A.L.S.
Project Editor

Lynda C. Cupell
Malbea A. Heilman
Beverly J. Holland
Visual Information Specialists

Quang M. Doan
Erica R. Shaver
Information Technology Specialists

CONTENTS

Introduction	2
Methods	2
Results	3
Discussion	5
References	8

Abortion Surveillance—United States, 1999

Laurie D. Elam-Evans, Ph.D.

Lilo T. Strauss, M.A.

Joy Herndon, M.S.

Wilda Y. Parker

Sara Whitehead, M.D.

Cynthia J. Berg, M.D.

Division of Reproductive Health

National Center for Chronic Disease Prevention and Health Promotion

Abstract

Problem/Condition: CDC began abortion surveillance in 1969 to document the number and characteristics of women obtaining legal induced abortions and to monitor unintended pregnancy.

Reporting Period Covered: This report summarizes and describes data reported to CDC regarding legal induced abortions obtained in the United States in 1999.

Description of System: For each year since 1969, CDC has compiled abortion data by state or area of occurrence. From 1973 through 1997, data were received from or estimated for 52 reporting areas in the United States: 50 states, the District of Columbia, and New York City. Beginning in 1998, CDC compiled abortion data from 48 reporting areas. Alaska, California, New Hampshire, and Oklahoma did not report, and data for these areas were not estimated. The availability of data regarding the characteristics of women who obtained an abortion in 1999 varied by state and by the number of states reporting each characteristic. The total number of legal induced abortions is reported by state of residence and also by state of occurrence for most areas; characteristics of women obtaining abortions in 1999 are reported by state of occurrence.

Results: A total of 861,789 legal induced abortions were reported to CDC for 1999, representing a 2.5% decrease from the 884,273 legal induced abortions reported by the same 48 reporting areas for 1998. The abortion ratio, defined as the number of abortions per 1,000 live births, was 256 in 1999, compared with 264 reported for 1998; the abortion rate for these 48 reporting areas was 17 per 1,000 women aged 15–44 years for 1999, the same as in 1997 and 1998.

The highest percentages of abortions were reported for women aged <25 years, women who were white, and unmarried women; slightly more than half were obtaining an abortion for the first time. Fifty-eight percent of all abortions for which gestational age was reported were performed at ≤ 8 weeks of gestation, and 88% were performed before 13 weeks. From 1992 (when these data were first collected) through 1999, increases have occurred in the percentage of abortions performed at ≤ 6 weeks of gestation. Few abortions were provided after 15 weeks of gestation; 4.3% were obtained at 16–20 weeks and 1.5% were obtained at ≥ 21 weeks. A total of 27 reporting areas submitted data stating that they performed medical (nonsurgical) procedures (two of these areas categorized medical abortions with “other” procedures), making up <1.0% of all procedures reported from all reporting areas.

In 1998 (for which data have not been published previously and the most recent year for which such data are available), nine women died as a result of complications from known legal induced abortion; no deaths were associated with known illegal abortion.

Interpretation: From 1990 through 1997, the number of legal induced abortions gradually declined. In 1998 and in 1999, the number of abortions continued to decrease when comparing the same 48 reporting areas. In 1998, as in previous years, deaths related to legal induced abortions occurred rarely.

Public Health Action: Abortion surveillance in the United States should continue so that trends and characteristics of women who obtain legal induced abortions can be examined and efforts to prevent unintended pregnancy can be enhanced.

Introduction

CDC began conducting abortion surveillance in 1969 to document the number and characteristics of women obtaining legal induced abortions and to monitor unintended pregnancy. This report is based on abortion data for 1999 provided to CDC's National Center for Chronic Disease Prevention and Health Promotion (NCCDPHP), Division of Reproductive Health.

Methods

For 1999, CDC compiled data that were voluntarily provided from 48 reporting areas in the United States: 46 states (excluding Alaska, California, New Hampshire, and Oklahoma), the District of Columbia, and New York City. Legal induced abortion was defined as a procedure, performed by a licensed physician or someone acting under the supervision of a licensed physician, that was intended to terminate a suspected or known intrauterine pregnancy and to produce a nonviable fetus at any gestational age (1,2). The total number of legal induced abortions was available from all reporting areas; however, not all of these areas collected data regarding some or all of the characteristics of women who obtained abortions. Thus, the availability of these data varied by reporting area in 1999.

The majority of reporting areas (45 states, the District of Columbia, and New York City) collected and reported adequate abortion data (i.e., data categorized in accordance with surveillance variables and with $\leq 15\%$ unknown values) by age of the woman, whereas only 24 states, the District of Columbia, and New York City collected and reported adequate abortion data by Hispanic ethnicity. Therefore, the findings in this report reflect characteristics of women only from reporting areas that submitted adequate data for those characteristics. The percentage data for most state tables include unknown values; unknowns have not been redistributed for the calculation of these percentages. However, percentages based only on known values are included for trend data, out-of-area residents, adolescent ages, and two-characteristics tables.

For the 48 reporting areas, data concerning the number of women obtaining legal induced abortions were provided by the central health agency.* These agencies provided data on numbers of abortions and characteristics of women by the state in which the abortions were performed (i.e., state of occurrence). For most states, only abortion totals were available by state of residence. However, two states, Delaware and Wisconsin, reported characteristics only for women who were

residents and who obtained abortions in the state, but not for women from out of state; and one state (Iowa) provided both numbers and characteristics only for state residents. Two states (Florida and Louisiana) did not report abortion totals by resident status, and two states (Arizona and Massachusetts) provided only the total number of abortions for out-of-state residents without specifying their particular state or area of residence.

Women who obtained legal induced abortions were categorized by 5-year age groups and by single years of age for adolescents aged 15–19 years. Both abortion ratios (number of abortions per 1,000 live births in the same age group per year) and abortion rates (number of abortions per 1,000 women in the same age group per year) are presented by age group. Starting with 1996, ratios were calculated by using the number of live births to residents of each area from birth data reported to CDC's National Center for Health Statistics; numbers had previously been received from state health departments. Rates were calculated by using the number of women residents of each area from tabulations provided by the U.S. Census Bureau. Because nearly all (94%) abortions among women aged <15 years occurred among those aged 13–14 years in 1988 (the latest year for which this information is known) (3), the population of women aged 13–14 years was used as the denominator for calculating abortion rates for women <15 years. Rates for women aged ≥ 40 years were based on the number of women aged 40–44 years. Rates for all women who obtained abortions, however, were based on the population of women aged 15–44 years.

Race was categorized by three groups: white, black, and all other races. Other races included Asian/Pacific Islander, American Indian, Alaska Native, and women classified as "other" race. Ethnicity was categorized as Hispanic and non-Hispanic. As in previous reports, race and ethnicity were provided as separate variables and abortions were not cross-classified by race and ethnicity.

Marital status was reported as either married (including women who were married or separated) or unmarried (including those who were never married, divorced, or widowed).

Gestational age (in weeks) at the time of abortion was categorized as ≤ 6 , 7, 8 and ≤ 8 , 9–10, 11–12, 13–15, 16–20, and ≥ 21 . Weeks of gestation were estimated in 20 reporting areas as the time elapsed since the woman's last menstrual period. For 18 other states, gestational age was reported on the basis of the physician's estimate (data from the clinical examination including ultrasound results). For the remaining five states, gestational age came from a combination of physician's estimates and the time elapsed since the woman's last menstrual

* Includes state health departments and the health departments of New York City and the District of Columbia.

period. Most areas (41 of 43) that reported adequate data on weeks of gestation at the time of abortion also reported abortions performed at ≤ 8 weeks separately for ≤ 6 , 7, and 8 weeks of gestation.

CDC has periodically reported data on abortion-related deaths since these deaths were first included in the Abortion Surveillance Report for 1973 (4,5). An abortion-related death was defined as a death resulting from a) a direct complication of an abortion, b) an indirect complication caused by the chain of events initiated by abortion, or c) aggravation of a preexisting condition by the physiologic or psychologic effects of the abortion (1,2). Sources of data for abortion-related deaths included national and state vital records, maternal mortality review committees, surveys, private citizens and groups, media reports, health-care providers, medical examiners' reports, and computerized searches of full-text newspaper databases. All deaths associated with any type of abortion, induced or spontaneous, were investigated. For each death possibly related to an induced abortion or an abortion of unknown type, clinical records and autopsy reports were requested and reviewed by two clinically experienced medical epidemiologists to determine the cause of death and whether the death was abortion related. Each abortion-related death was then categorized as legal induced, illegal induced, spontaneous, or unknown (whether induced or spontaneous). Abortion-related deaths for 1972–1998 are provided in this report. The 1998 data have not been published previously and are the most recent data available. National case-fatality rates were calculated as the number of known legal induced abortion-related deaths per 100,000 reported legal induced abortions. Case-fatality rates for 1972–1997 are provided in this report. No case-fatality rate was calculated for 1998 because only 48 states reported abortions; thus, the denominator for the national case-fatality rate was unknown.

Results

Overall, the annual number of legal induced abortions in the United States increased gradually until it peaked in 1990, and it has generally declined thereafter (Figure 1). In 1999, a total of 861,789 legal induced abortions were reported to CDC by 48 reporting areas. This represents a 2.5% decrease from 1998, for which 884,273 legal induced abortions were reported from the same 48 reporting areas (5) (Table 1).

The national legal induced abortion ratio increased from 196 per 1,000 live births in 1973 (the first year that 52 areas reported) to 358 per 1,000 live births in 1979 and remained stable through 1981 (Figure 1) (Table 2). The ratio peaked at 364 per 1,000 live births in 1984 and since then has shown a

generally steady decline. In 1999, the abortion ratio was 256 per 1,000 live births in the 48 reporting areas. This represents a 3.2% decrease from 1998 (264 per 1,000 live births) in the same 48 reporting areas (5) (Table 2). However, approximately 30–35 points of the apparent decrease in the 1998 and 1999 ratios compared with earlier years can be attributed to the current exclusion of the four nonreporting states, which had relatively high abortion ratios in earlier years.

The national legal induced abortion rate increased from 14 abortions per 1,000 women aged 15–44 years in 1973 (the first year that 52 areas reported) to 25 per 1,000 in 1980. In the 1980s and early 1990s, the rate remained stable at 23–24 abortions per 1,000 women, and from 1994 through 1997 it again stabilized at 20–21. The abortion rate has remained unchanged since 1997 at 17 per 1,000 women in the same 48 reporting areas. Again, the seeming decline after 1997 is due to the exclusion of the four nonreporting states with relatively high abortion rates.

The numbers, ratios, and rates of reported legal induced abortions are presented by area of residence as well as by area of occurrence (Table 3). In 1999, as in previous years, the highest number of reported legal induced abortions occurred in New York City (102,334), Florida (83,971), and Texas (80,739); the fewest occurred in Wyoming (110), South Dakota (740), and Idaho (867) (Table 3). The abortion ratios by state or area of occurrence ranged from 18 per 1,000 live births in Wyoming to 980 per 1,000 live births in the District of Columbia. The rates by occurrence ranged from 1 per 1,000 women aged 15–44 in Wyoming to 59 per 1,000 women aged 15–44 in the District of Columbia. These ratios and rates should be viewed with consideration of the sizable variation by state in the percentage of abortions obtained by out-of-state residents. In 1999, approximately 9% of reported abortions were obtained by out-of-state residents. The percentages ranged from 0.5% in Hawaii to 55% in the District of Columbia (Table 3). Data by state of residence are not complete because four states (Alaska, California, New Hampshire, and Oklahoma) did not report, and five states (Arizona, Florida, Iowa, Louisiana, and Massachusetts) could not provide any data concerning the residence status of all women obtaining abortions in their state.

Women with known age reported as 20–24 years obtained 32% of all abortions; women aged <15 years obtained <1.0% of all abortions in areas where age was reported (Table 4). Abortion ratios were highest for the youngest women (709 abortions per 1,000 live births for women aged <15 years) and lowest for women aged 30–34 years (152 per 1,000 live births) (Figure 2) (Table 4). In contrast to abortion ratios, among women for whom age was reported, abortion rates

were highest for women aged 20–24 years (35 abortions per 1,000 women) and lowest for women at the extremes of reproductive age (2 abortions per 1,000 women aged 13–14 years and 2 per 1,000 women aged 40–44 years) (Table 4). Among adolescents (aged <20 years), the percentage of abortions obtained increased with increasing age. However, the abortion ratio was highest for those <15 years (708 abortions per 1,000 live births)[†] and lowest for those aged 19 years (343 per 1,000 live births) (Table 5). Conversely, the rates of abortions were lowest for adolescents aged <15 years (2 per 1,000 women aged 13–14 years) and highest for women aged 19 years (30 per 1,000 women aged 19 years) (Table 5).

For women in the majority of age groups, the abortion ratio increased from 1974 through the early 1980s and declined thereafter, particularly for the younger (≤ 19) and oldest reproductive-aged women (Figure 3). Abortion ratios for women <15 years have always been higher than those for the other age groups. The abortion ratio for women aged 20–34 years (the groups with the highest fertility rates) (6) has remained relatively stable since the mid-1980s.

In 1999, for women whose weeks of gestation at the time of abortion were adequately reported, 57% of reported legal induced abortions were known to have been obtained at ≤ 8 weeks of gestation, and 87% were reported at <13 weeks (Table 6). Overall, 22% of abortions were performed at ≤ 6 weeks of gestation, 17% at 7 weeks, and 18% at 8 weeks (Table 7). Few reported abortions were provided after 15 weeks of gestation; 4.3% were known to have been obtained at 16–20 weeks, and 1.5% at ≥ 21 weeks.

For women whose type of procedure was adequately reported, almost all (98%) abortions were known to have been performed by curettage and 0.2% by intrauterine instillation (Table 8). Hysterectomy and hysterotomy were included in the “other” procedure category and were used in <0.01% of all abortions. Twenty-seven reporting areas submitted data stating that they performed medical (nonsurgical) procedures[§] (two of these areas included medical abortions in the “other” category), making up approximately 1% of all procedures reported from all areas with adequate reporting. However, certain other reporting areas do not include medical abortions as a separate category in their abortion reporting form. For 1999, 25 reporting areas submitted data stating that they performed a total of 6,278 medical (nonsurgical) procedures. This reflects an increase of 28% from the 4,899 medical abortions

reported by 22 reporting areas for 1998 (5). We do not know to what extent the 6,278 medical (nonsurgical) abortions reported to CDC for 1999 represent the use of this procedure in all reporting areas.

In the 37 areas for which race was adequately reported, approximately 55% of women who obtained legal induced abortions were known to be white, 36% were black and 6% were of other races. (Table 9). However, the abortion ratio for black women (529 per 1,000 live births) was 3.0 times the ratio for white women (177 per 1,000 live births). Additionally, the abortion ratio for women of other races (367 per 1,000 live births) was 2.1 times the ratio for white women. The abortion rate for black women (31 per 1,000 women) was 3.0 times the rate for white women (10 per 1,000 women). The abortion rate for women of other races (26 per 1,000 women) was 2.5 times the rate for white women.

Twenty-four states, the District of Columbia, and New York City reported adequate data[¶] concerning the ethnicity of women who obtained legal induced abortions (Table 10). The percentage of abortions known to have been obtained by Hispanic women in these reporting areas ranged from 0.2% in Kentucky to 46% in New Mexico. For Hispanic women in these reporting areas, the abortion ratio was 261 per 1,000 live births. The abortion rate for Hispanic women was 19 abortions per 1,000 women.

For women whose marital status was adequately reported, 78% of women who obtained abortions were known to be unmarried (Table 11). The abortion ratio for unmarried women was 8.6 times the ratio for married women (604 versus 70 abortions per 1,000 live births).

For women for whom data on previous live births were adequately reported, 39% of women who obtained legal induced abortions were known to have had no previous live births, and 86% had had ≤ 2 previous live births (Table 12). The abortion ratio was highest for women who had three previous live births (298 per 1,000 live births) and lowest for women who had one previous live birth (206 per 1,000 live births).

In 1999, of women who obtained an abortion and whose number of previous abortions was adequately reported, 52% were known to have obtained an abortion for the first time. Nineteen percent of women had ≥ 2 previous abortions (Table 13).

For women whose age and race were known, white women had a greater percentage of abortions at the youngest (≤ 19 years) and oldest (≥ 35 years) age groups compared with women of black or other races (20% versus 18%, and 12% versus 10%, respectively) (Table 14). For women whose marital

[†] Ratios for women aged <15 years differ in Table 4 and Table 5 because a different number of areas are reporting; Table 4 includes 47 reporting areas, and Table 5 includes 45.

[§] Medical (nonsurgical) induced abortion procedures involve the administration of a medication or medications to induce an abortion.

[¶] After exclusion of 13 states for which ethnicity was unknown for >15% of women who obtained an abortion.

status and race were both known, the percentage of reported abortions among black or other races that were obtained by unmarried women (84%) was higher than that obtained by unmarried white women (79%). Among women obtaining abortions whose age and Hispanic ethnicity were known (25 reporting areas), the percentage of abortions obtained by older women (≥ 35 years) of non-Hispanic ethnicity (12%) was greater than that for older women of Hispanic ethnicity (9%) (Table 15). For women whose marital status and ethnicity were known (24 reporting areas), the percentage of reported abortions obtained by unmarried women was similar for non-Hispanic and Hispanic women (Table 15). Data were not available to cross-classify race by Hispanic ethnicity.

As in the past, approximately 88% of all abortions (for which gestational age at the time of abortion was reported and known) were obtained during the first 12 weeks of gestation (Table 1). The percentage of women who obtained an abortion at ≤ 8 weeks of gestation increased with age (Figure 4) (Table 16). This association is most evident for abortions obtained at ≤ 6 weeks' gestation (Table 17). The percentage of women who obtained an abortion at ≥ 21 weeks of gestation decreased with age for women through 25–29 years and remained stable for women in the older age groups (Table 16). Among women with known race and weeks of gestation, white women and women of other races were more likely than black women to obtain abortions at ≤ 6 or 7 weeks of gestation (Table 17). Among women with known ethnicity and weeks of gestation, 23% of Hispanic women obtained abortions at ≤ 6 weeks of gestation and 59% obtained abortions at ≤ 8 weeks' gestation (Table 17).

For women whose type of procedure and weeks of gestation were known, approximately 99% of reported abortions obtained at ≤ 15 weeks of gestation were performed using curettage (primarily suction procedures) (Table 18). Approximately 88% of reported medical (nonsurgical) abortions ($n = 4,777$) were performed at ≤ 8 weeks' gestation; these 4,777 represent 1.3% of all abortions that are performed at ≤ 8 weeks' gestation. At ≥ 16 weeks of gestation, medical (nonsurgical) abortions ($n = 491$) made up 1.3% of all abortions, whereas at all other gestational ages, medical (nonsurgical) abortions made up $< 0.2\%$. Intrauterine instillation involved the use of saline or prostaglandin and was used rarely (0.2% of all abortions), primarily at ≥ 16 weeks of gestation.

From the National Pregnancy Mortality Surveillance System, CDC identified 22 maternal deaths with some indication of abortion on the death certificate for 1998. Investigation of these cases indicated that nine of these 22 deaths were known to be related to legal induced abortion and none to illegal induced abortion (Table 19). Eleven deaths were due to spontaneous abortion, and one death was due to abortion of

unknown type. One death was determined not to be abortion related. Numbers of deaths due to legal induced abortion were highest before the 1980s, with very few deaths occurring in 1998 (Table 19). Possible abortion-related deaths that occurred during 1999 are currently being investigated.

Discussion

A total of 861,789 legal induced abortions were reported for 1999 in the United States from 46 states, the District of Columbia, and New York City. This is a decline of 2.5% from the legal induced abortions reported for 1998 from the same 48 reporting areas (5). In previous years, a substantial number of legal induced abortions were estimated to have been performed in California, (e.g., $> 23\%$ of the U.S. total in 1997) (7). The lack of data for California for 1999 explains most of the 27% decrease from the annual number of abortions reported in 1997 (7) as well as some of the decrease in the total ratio and rate. After 1997, data were no longer estimated for nonreporting states (5).

The abortion ratio for 1999 (256 per 1,000 live births) was a 3.2% decline from the previous year and is the lowest recorded level since 1975 (8). The abortion rate (17 per 1,000 women aged 15–44 years) was the same as in 1997 and 1998 (Table 2). The declines in the abortion ratio and rate over time may reflect multiple factors, including a decrease in the number of unintended pregnancies (9); a shift in the age distribution of women toward the older and less fertile ages (6); reduced access to abortion services, including the passage of abortion laws that affect adolescents (e.g., parental consent or notification laws and mandatory waiting periods) (10–13); and changes in contraceptive practices, including an increased use of contraception, particularly of condoms, and, among young women, of long-acting hormonal contraceptive methods that were introduced in the early 1990s (14–16).

The abortion rate reported here for the United States was higher than recent rates reported for Australia, Canada, and Western European countries and lower than rates reported for China, Cuba, most Eastern European countries, and several of the Newly Independent States of the former Soviet Union (17,18). The abortion rates reported for teenagers are higher in the United States than in most Western European countries and some Eastern European countries (19).

As in previous years, the abortion ratio in 1999 varied substantially by age (5). Although the ratio was highest for adolescents, the percentage of legal induced abortions obtained by women aged ≤ 19 years has decreased since the early 1970s (from 33% in 1973 to 22% in 1990 and to 20% in 1992) and has remained at that level (Table 1) (4,20–22). The abortion ratio has declined for women aged ≤ 15 and 15–19

years since the mid-1980s. Other studies also have indicated a decrease in birth rates for women aged 15–19 years from 1991 through 2000 and a decrease in adolescent pregnancy rates from 1991 to 1997 (6,23–29).

Since 1980, the percentage distribution of abortions by known weeks of gestation has been stable. From 1992 (when more detailed data for ≤ 8 weeks' gestation were first available) through 1999, data have shown some steady increases in procedures performed at ≤ 6 and 7 weeks' gestation, with decreases occurring in the percentage of abortions performed at 8, 9–10, and 11–12 weeks' gestation. The increase in the percentage of abortions known to have been performed at ≤ 6 and 7 weeks may be related to an increase in availability of early abortion services since 1992 as well as to an increase in medical (nonsurgical) and surgical procedures that can be performed early in gestation (30,31). Abortions performed early in pregnancy are associated with lower risks of mortality and morbidity (32). The proportions of abortions performed later in pregnancy (≥ 13 weeks) have varied little since 1992. Several additional factors affect the timing of abortion. Age of the woman, race, marital status, level of education, availability and accessibility of services, timing of confirmation of pregnancy, personal decision-making, level of fear of discovery of pregnancy and denial of pregnancy all have an impact on timing (5,33,34).

Since the mid-1990s, two medical (nonsurgical) regimens—methotrexate and mifepristone, each used in conjunction with misoprostol—have been tested in clinical trials and used by clinical practitioners to perform early medical (nonsurgical) abortions (31,35). Surveillance data from CDC and other investigators indicate that $>50\%$ of all U.S. abortions are performed at ≤ 8 weeks of gestation, which is the timing of the regimen approved for both mifepristone and methotrexate (36). The medical (nonsurgical) procedures reported most often for abortions performed early in gestation (≤ 7 weeks) are use of methotrexate with misoprostol and mifepristone with misoprostol (37,38). Mifepristone for medical abortion was approved by the Food and Drug Administration for use and distribution in the United States in September 2000. This approval might result in early medical (nonsurgical) induced abortions becoming more widespread (39,40).

In 1997, the U.S. Standard Report of Induced Termination of Pregnancy, published by the National Center for Health Statistics (NCHS) and used by providers for abortion reporting to state health departments, was revised to include a category for “medical (nonsurgical)” procedures (41). Medical (nonsurgical) legal induced abortion procedures have been included in this report since then as a separate category. CDC will continue to monitor early medical (nonsurgical) procedures.

The percentage of abortions known to be performed by curettage (which includes dilatation and evacuation [D&E]) increased from 89% in 1972 to 98% in 1999 (Table 1), while the percentage of abortions performed by intrauterine instillation declined sharply, from 10% to 0.2%. The increase in use of D&E is likely due to the lower risk for complications associated with the procedure (42,43). From 1974 (first year for which these data were available) through 1999, the percentage of second-trimester abortions performed by D&E (curettage) increased from 31% to 96%; the percentage of second-trimester abortions performed by intrauterine instillation decreased from 57% to 1.3% (Table 18) (44).

The differential between the abortion ratio for black women and that for white women has increased substantially since 1989 (45). In addition, the abortion rate for black women was 3.0 times the rate for white women. Census Bureau estimates and birth certificate data indicate that the majority of Hispanic women report themselves as white. NCHS vital statistics reports indicate that 97% of Hispanic women giving birth in 1999 were white (6). Data for some Hispanic women, therefore, are included in data for white women; in 1999, Hispanic women accounted for 24% of all births to white women (6). Race-specific and ethnicity-specific differences in legal induced abortion ratios and rates might reflect differences in factors such as socioeconomic status, access to family planning and contraceptive services, contraceptive use, and incidence of unintended pregnancies among groups.

In 1999, 37 states, the District of Columbia, and New York City reported Hispanic ethnicity of women who obtained abortions. Because of concerns regarding the completeness of such data ($>15\%$ unknown data) in some states, in 1999, data from only 24 states, the District of Columbia and New York City were used to determine the number and percentage of abortions obtained by women of Hispanic ethnicity. These geographic areas represent approximately 40% of all reproductive-age Hispanic women in the United States for 1999 and approximately 40% of U.S. Hispanic births (6,46). Thus, the number of Hispanic women who obtain abortions is underestimated, and the number, ratio, and rate of abortions for Hispanic women in this report are not generalizable to the overall Hispanic population in the United States.

The abortion ratio for Hispanic women in past years has either been slightly lower than or similar to that for non-Hispanic women; however, in 1999, the results shifted in that the ratio for Hispanic women (261) was substantially higher than for non-Hispanic women (252). As in the past, the abortion rate per 1,000 Hispanic women was higher than the rate per 1,000 non-Hispanic women, which is consistent with another study (47). NCHS vital statistics reports indicate that

in 1999, fertility and live birth rates were substantially higher for Hispanic women as a whole than for non-Hispanic women for all age groups (6). However, because fertility and birth rates differ substantially among components of the Hispanic subgroups (Mexican, Puerto Rican, Cuban, and other Hispanic), and these differ substantially from rates among components of the non-Hispanic subgroups (white, black, other), comparisons between Hispanic and non-Hispanic groups are of limited value (6). The available abortion surveillance data do not permit cross-classification of race by Hispanic ethnicity.

Compared with 1972, the annual number of deaths associated with known legal induced abortion in 1998 has decreased nearly two thirds (Table 19). In 1972, 24 women died from causes known to be associated with legal abortions and 39 died as a result of known illegal abortions. In 1998, nine died as a result of legal induced abortion and none died as a result of illegal induced abortion. The national case-fatality rate for 1998 can not be appropriately calculated because a substantial number of abortions occurred in the four nonreporting states, making the denominator unknown.

Because these data are reported voluntarily, several limitations exist. First, abortion data are compiled and reported to CDC by reporting area where the abortion was performed rather than by where the woman resides. This inflates the numbers, ratios, and rates of abortions for areas where a high proportion of legal abortions are obtained by out-of-state residents and undercounts procedures for states with limited abortion services or more stringent legal requirements for obtaining an abortion (causing women to seek abortions elsewhere). Second, four states (Alaska, California, New Hampshire, and Oklahoma) did not collect or report abortion data in 1998 or 1999. Data for these four states were not estimated for 1998 or 1999. Data for California and Oklahoma had been estimated before 1998, and Alaska and New Hampshire reported for 1997. Third, data provided to state or area health departments by providers may be incomplete (48). Fourth, the overall number, ratio, and rate of abortions are conservative estimates because the total numbers of legal induced abortions provided by central health agencies and reported to CDC for 1999 were probably lower than the numbers actually performed. Additionally, totals provided by central health agencies are lower than those obtained by direct surveys of abortion providers (49). For example, the total number of abortions reported to CDC for 1997 was approximately 12% lower than that reported for 1997 by The Alan Guttmacher Institute, a private organization that contacts abortion providers directly to obtain the total number of abortions performed (27). Fifth, not all states collected or reported data on all characteristics (e.g., age, race, and weeks of gestation) of women obtaining a legal induced abortion in 1999. Thus, the num-

bers, rates, and ratios derived in this analysis may not be representative of all women who obtained abortions.

Despite these limitations, findings from ongoing national surveillance of legal induced abortion are useful for several purposes. First, public health agencies use data from abortion surveillance to identify characteristics of women who are at high risk for unintended pregnancy. Second, ongoing annual surveillance is used to monitor trends in the number, ratio, and rate of abortions in the United States. Third, statistics regarding the number of pregnancies ending in abortion are used in conjunction with birth data and fetal death computations to estimate pregnancy rates (e.g., pregnancy rates among adolescents) (23–27). Fourth, abortion and pregnancy rates can be used to evaluate the effectiveness of family planning programs and programs for preventing unintended pregnancy. Fifth, ongoing surveillance provides data for assessing changes in clinical practice patterns related to abortion (e.g., longitudinal changes in the types of procedures and trends in weeks of gestation at the time of abortion). Finally, numbers of abortions are used as the denominator in calculating abortion morbidity and mortality rates (32).

Welfare-reform legislation, specifically, the Personal Responsibility and Work Opportunity Reconciliation Act of 1996,** has increased interest in accurate state-based surveillance for induced abortion. In addition, certain states have instituted programs that emphasize the prevention of unintended pregnancy, particularly among adolescents. To help guide these efforts, an ongoing, accurate assessment of induced abortion is needed in all states (particularly abortion data by state of residence) to determine the number and characteristics of women who obtain these procedures.

Induced abortions usually result from unintended pregnancies, which often occur despite use of contraception (14,50,51). Data from the 1995 National Survey of Family Growth (NSFG), conducted by NCHS, indicate that approximately 49% of all pregnancies were unintended (9,52) and 31% of live births were associated with unintended pregnancy (i.e., either mistimed or unwanted at conception). Unintended pregnancy is a problem not just for adolescents, unmarried women, or poor women; it is a pervasive public health problem for all women of reproductive age (9,14,52).

A reduction in unintended pregnancy, and thus abortion, will require several complex strategies. In a study of abortion patients conducted during 1994–1995, 58% of patients reported that they “currently used” contraception during the

** Section 103 of PL 104-193 provides for additional welfare funding for as many as five states if a) the birth rate of infants to unwed mothers is decreased, and b) the rate of induced pregnancy terminations is less than the rate for 1995 (the baseline year).

month of their last menstrual period. However, their use of contraception might have been inconsistent or incorrect (47). In 1995, when the most recent NSFG was conducted, approximately 29% of sexually active U.S. women who used only oral contraceptives for birth control reported that they missed a birth-control pill one or more times during the 3 months before their NSFG interview. In addition, approximately 33% of U.S. women who were using only coitus-dependent contraceptive methods^{††} during the 3 months before the interview used these methods inconsistently (9). Also, not all health insurance plans provide contraceptive benefits (53). Therefore, education regarding improved contraceptive use and practices as well as access to and education regarding safe, effective, and affordable contraception and family-planning services might help reduce the incidence of unintended pregnancy and, therefore, might reduce the number of legal induced abortions in the United States (54–56).

Copies of this and other *MMWR* reports containing statistical and epidemiologic data regarding abortions can be obtained through the CDC website at http://www.cdc.gov/nccdphp/drh/surv_abort.htm.

Acknowledgments

The authors thank Sonya Bowens, M.S. and Elizabeth Fitch, Division of Reproductive Health, NCCDPHP, CDC, for their critical work with computer programming and graphics for this surveillance project.

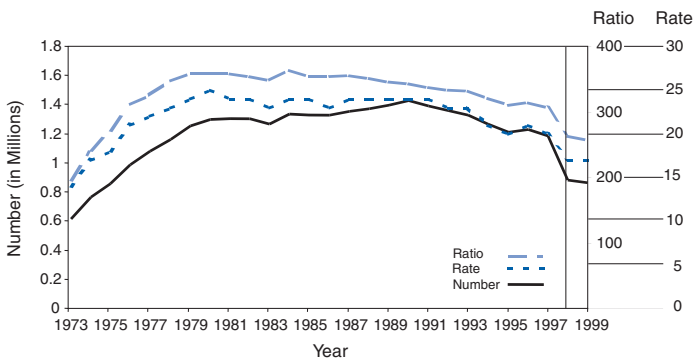
References

1. CDC. Abortion surveillance, 1977. Atlanta: US Department of Health, Education, and Welfare, Public Health Service, CDC, 1979:7.
2. CDC. Abortion surveillance, 1978. Atlanta: US Department of Health and Human Services, Public Health Service, CDC, 1980:7.
3. Spitz AM, Velebil P, Koonin LM, et al. Pregnancy, abortion, and birth rates among US adolescents—1980, 1985, and 1990. *JAMA* 1996;275:989–94.
4. CDC. Abortion surveillance, 1973. Atlanta: US Department of Health, Education, and Welfare, Public Health Service, CDC, 1975:5.
5. Herndon J, Strauss LT, Whitehead S, Parker WY, Bartlett L, Zane S. Abortion surveillance—United States, 1998. In: *CDC Surveillance Summaries*, June 7, 2002. *MMWR* 2002;51(No. SS-3):1–34.
6. Ventura SJ, Martin JA, Curtin SC, Menacker F, Hamilton BE. Births: final data for 1999. Hyattsville, MD: US Department of Health and Human Services, CDC, National Center for Health Statistics, 2001. (National vital statistics reports; vol 49, no.1).
7. Koonin LM, Strauss LT, Chrisman CE, Parker WY. Abortion surveillance—United States, 1997. In: *CDC Surveillance Summaries*, December, 8, 2000. *MMWR* 2000;49(No. SS-11):1–43.
8. CDC. Abortion surveillance, 1975. Atlanta: US Department of Health, Education, and Welfare, Public Health Service, CDC, 1977.
9. Abma JC, Chandra A, Mosher WD, Peterson LS, Piccinino LJ. Fertility, family planning, and women's health: new data from the 1995 National Survey of Family Growth. Hyattsville, MD: US Department of Health and Human Services, Public Health Service, CDC, 1997; DHHS publication no. (PHS)97-1995. (Vital and health statistics; series 23, no. 19).
10. Henshaw SK. Factors hindering access to abortion services. *Fam Plann Perspect* 1995;27:54–9.
11. Henshaw SK. Abortion incidence and services in the United States, 1995–1996. *Fam Plann Perspect* 1998;30:263–70, 287.
12. Alan Guttmacher Institute. State policies in brief. Available at <http://www.guttmacher.org/pubs/spib.html>.
13. Ellertson C. Mandatory parental involvement in minors' abortions: effects of the laws in Minnesota, Missouri, and Indiana. *Am J Public Health* 1997;87:1367–74.
14. Piccinino LJ, Mosher WD. Trends in contraceptive use in the United States: 1982–1995. *Fam Plann Perspect* 1998;30:4–10, 46.
15. Darroch JE, Singh S. Why is teenage pregnancy declining? The roles of abstinence, sexual activity and contraceptive use. New York: Alan Guttmacher Institute. Occasional Report No. 1, 1999.
16. Abma JC, Sonenstein F. Sexual activity and contraceptive practices among teenagers in the United States, 1988 and 1995. Hyattsville, MD: US Department of Health and Human Services, Public Health Service, CDC, National Center for Health Statistics, 2001; DHHS publication No (PHS) 2001-2997. (Vital and health statistics; series 23, no. 21).
17. Henshaw SK, Singh S, Haas T. The incidence of abortion worldwide. *Int Fam Plann Perspect* 1999;25(suppl):S30–S37.
18. Statistics Canada. Therapeutic abortions, 1996 and 1997. *The Daily Statistics Canada*. Ottawa: Minister of Industry, 2000.
19. McElroy SW, Moore KA. Trends over time in teenage pregnancy and childbearing: the critical changes. In: Maynard RA, ed. *Kids having kids: economic costs and social consequences of teen pregnancy*. Washington, DC: Urban Institute Press, 1997:23–53.
20. Koonin LM, Smith JC, Ramick M. Abortion surveillance—United States, 1990. In: *CDC Surveillance Summaries* December 17, 1993. *MMWR* 1993;42(No. SS-6):29–57.
21. Lawson HW, Atrash HK, Saftlas AF, Koonin LM, Ramick M, Smith JC. Abortion surveillance, United States, 1984–1985. In: *CDC Surveillance Summaries*, September 1, 1989. *MMWR* 1989;38(No. SS-2):11–45.
22. Koonin LM, Smith JC, Ramick M, Green CA. Abortion surveillance—United States, 1992. In: *CDC Surveillance Summaries*, May 3, 1996. *MMWR* 1996;45(No. SS-3):1–36.
23. CDC. National and state-specific pregnancy rates among adolescents—United States, 1995–1997. *MMWR* 2000;49:605–11.
24. Ventura SJ, Mathews TJ, Hamilton BE. Teenage births in the United States: Trends 1991–2000. Hyattsville, MD: US Department of Health and Human Services, Public Health Service, CDC, National Center for Health Statistics, 2002. (National vital statistics reports; vol. 50 no. 9).
25. Ventura SJ, Mosher WD, Curtin SC, Abma JC, Henshaw S. Trends in pregnancies and pregnancy rates by outcome: estimates for the United States, 1976–1996. Hyattsville, MD: US Department of Health and Human Services, Public Health Services, CDC, National Center for Health Statistics, 2000; DHHS publications no. (PHS) 2000-1934. (Vital and health statistics; series 21, no. 56).

^{††} Coitus-dependent contraceptive methods include male or female condoms, diaphragm, sponge, cream, jelly, or other methods that must be used at the time intercourse occurs.

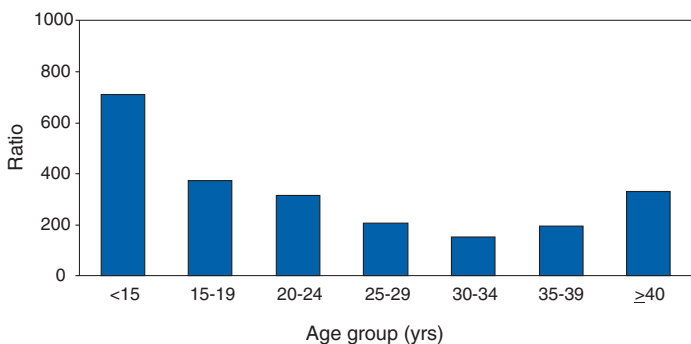
26. Ventura SJ, Mathews TJ, Hamilton BE. Births to teenagers in the United States, 1940–2000. Hyattsville, MD: US Department of Health and Human Services, Public Health Service, CDC, National Center for Health Statistics, 2001. (National vital statistics reports; vol. 49, no. 10).
27. Ventura SJ, Mosher WD, Curtin SC, Abma JC, Henshaw S. Trends in pregnancy rates for the United States, 1976–97: An update. Hyattsville, MD: US Department of Health and Human Services, Public Health Service, CDC, National Center for Health Statistics, 2001. (National vital statistics reports; vol. 49, no. 4).
28. Martin JA, Hamilton BE, Ventura SJ, Menacker F, Park MM. Births: Final Data for 2000. Hyattsville, MD: US Department of Health and Human Services, Public Health Service, CDC, National Center for Health Statistics, 2002. (National vital statistics reports; vol. 50, no. 5).
29. Ventura SJ, Curtin SC, Mathews TJ. Variations in teenage birth rates, 1991–98: national and state trends. Hyattsville, MD: US Department of Health and Human Services, Public Health Service, CDC, National Center for Health Statistics, 2000. (National vital statistics reports; vol. 48 no. 6).
30. Edwards J, Carson SA. New technologies permit safe abortion at less than six weeks' gestation and provide timely detection of ectopic gestation. *Am J Obstet Gynecol* 1997;176:1101–6.
31. Creinin MD, Edwards J. Early abortion: surgical and medical options. *Curr Probl Obstet Gynecol Fertil* 1997;20:1–32.
32. Lawson HW, Frye A, Atrash HK, Smith JC, Shulman HB, Ramick M. Abortion mortality, United States, 1972 through 1987. *Am J Obstet Gynecol* 1994;171:1365–72.
33. Fielding WL, Sachtleben MR, Friedman LM, Friedman EA. Comparison of women seeking early and late abortion. *Am J Obstet Gynecol* 1978;131:304–10.
34. Tietze C, Henshaw SK. Induced abortion: a world review, 1986. 6th ed. New York: Alan Guttmacher Institute, 1986:29–52.
35. Kahn JG, Becker BJ, Macisaa L, et al. The efficacy of medical abortion: a meta-analysis. *Contraception* 2000;61:29–40.
36. Joffe C. Medical abortion in social context. *Am J Obstet Gynecol* 2000;183(suppl):S10–S15.
37. Pymar HC, Creinin MD. Alternatives to mifepristone regimens for medical abortion. *Am J Obstet Gynecol* 2000;183 (suppl):S54–S64.
38. Goldberg AB, Greenberg MB, Darney PD. Drug therapy: misoprostol and pregnancy. *N Engl J Med* 2001;344:38–47.
39. Joffe C. Reactions to medical abortion among providers of surgical abortion: an early snapshot. *Fam Plann Perspect* 1999;31:35–8.
40. Koenig JD, Tapias MP, Hoff T, Stewart FH. Are US health professionals likely to prescribe mifepristone or methotrexate? *J Am Med Womens Assoc* 2000;55(Suppl):155–60.
41. CDC. Handbook on the reporting of induced termination of pregnancy. Hyattsville, MD: US Department of Health and Human Services, CDC, National Center for Health Statistics, 1998; DHHS publication no. (PHS)98-1117;1–18.
42. Cates W Jr, Schulz KF, Grimes DA, et al. Dilatation and evacuation procedures and second-trimester abortion: the role of physician skill and hospital setting. *JAMA* 1982;248:559–63.
43. Grimes DA. Second-trimester abortions in the United States. *Fam Plann Perspect* 1984;16:260–6.
44. CDC. Abortion surveillance, 1974. Atlanta: US Department of Health, Education, and Welfare, Public Health Service, CDC, 1976:1–49.
45. Koonin LM, Smith JC, Ramick M, Lawson HW. Abortion surveillance—United States, 1989. In: *CDC Surveillance Summaries*, September 4, 1992. *MMWR* 1992;41(No. SS-5):1–33.
46. US Census Bureau. Table ST-99-34 to 43: Population estimates for states by age, race, sex, and Hispanic origin: July 1, 1990 to July 1, 1999 (includes revised population counts).
47. Henshaw SK, Kost K. Abortion patients in 1994–1995: characteristics and contraceptive use. *Fam Plann Perspect* 1996;28:140–7,158.
48. Henshaw SK, Feivelson DJ. Teenage abortion and pregnancy statistics by state, 1996. *Fam Plann Perspect* 2000; 32:272–80.
49. Saul R. Abortion reporting in the United States: an examination of the federal–state partnership. *Fam Plann Perspect* 1998;30:244–7.
50. Fu H, Darroch JE, Haas T, Ranjit N. Contraceptive failure rates: new estimates from the 1995 National Survey of Family Growth. *Fam Plann Persp* 1999;31:56–63. Corrected data are available at <http://www.agi-usa.org/pubs/journals/3105699.html>.
51. Torres A, Forrest JD. Why do women have abortions? *Fam Plann Perspect* 1988;20:169–76.
52. Henshaw SK. Unintended pregnancy in the United States. *Fam Plann Perspect* 1998;30:24–9,46.
53. Gold RB, Darroch JE, Frost JJ. Mainstreaming contraceptive services in managed care—five states' experiences. *Fam Plann Perspect* 1998;30:204–11.
54. Westoff CF. Contraceptive paths toward the reduction of unintended pregnancy and abortion. *Fam Plann Perspect* 1988;20:4–13.
55. Forrest JD. Epidemiology of unintended pregnancy and contraceptive use. *Am J Obstet Gynecol* 1994;170(suppl):1485–8.
56. Gonen JS. Value purchasing: investing in women's health. Washington DC: Jacobs Institute of Women's Health, 2000.

FIGURE 1. Number, ratio,* and rate† of legal abortions performed, by year—United States, 1973–1999§



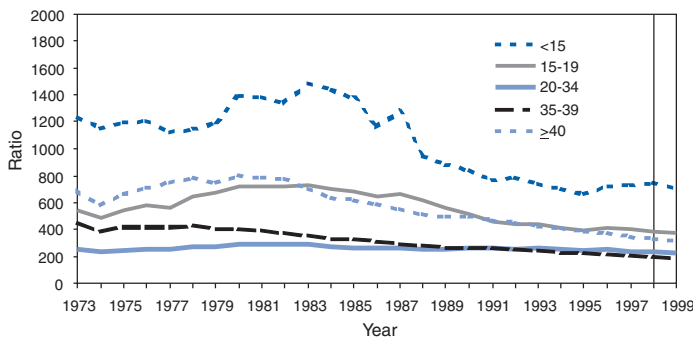
* Number of abortions per 1,000 live births.
 † Number of abortions per 1,000 women aged 15–44 years.
 § Beginning in 1998, data are from 48 reporting areas. See Tables 1 and 2.

FIGURE 2. Abortion ratio,* by age group of women who obtained a legal abortion—selected states,† United States, 1999



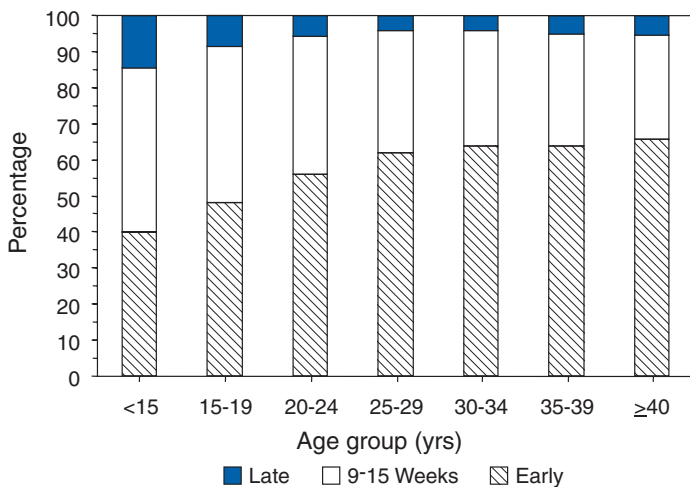
* Number of abortions per 1,000 live births.
 † Data from 45 states, the District of Columbia, and New York City.

FIGURE 3. Abortion ratio,* by age group† of women who obtained a legal abortion—selected states, United States, 1973–1999§



* Number of abortions per 1,000 live births.
 † In years.
 § Beginning in 1998, data are for 45 states, the District of Columbia, and New York City. See Table 1.

FIGURE 4. Percentage* of women who obtained early† or late§ abortions, by age group of women—selected states,¶ United States, 1999



* Based on total known weeks of gestation.
 † ≤8 weeks of gestation.
 § ≥16 weeks of gestation.
 ¶ Data from 40 states and New York City; excludes one state where weeks of gestation was unknown for >15% of women.

TABLE 1. Characteristics of women who obtained legal abortions—United States, selected years, 1972–1999

Characteristic	1972	1976	1980	1985	1990	1992	1994	1995	1996	1997	1998	1999
Reported no. of legal abortions*	586,760	988,267	1,297,606	1,328,570	1,429,247	1,359,146	1,267,415	1,210,883	1,225,937	1,186,039	884,273	861,789
Reported no. of legal abortions excluding AK, CA, NH, OK†								908,243	934,549	900,171	884,273	861,789
	Percent distribution§											
Residence												
In-state/area	56.2	90.0	92.6	92.4	91.8	92.1	91.5	91.5	91.7	91.8	91.5	91.2
Out-of-state/area	43.8	10.0	7.4	7.6	8.2	7.9	8.5	8.5	8.3	8.2	8.5	8.8
Age (yrs)												
≤19	32.6	32.1	29.2	26.3	22.4	20.1	20.2	20.1	20.3	20.1	19.8	19.2
20–24	32.5	33.3	35.5	34.7	33.2	34.5	33.5	32.5	31.8	31.7	31.8	32.2
≥25	34.9	34.6	35.3	39.0	44.4	45.4	46.3	47.4	47.9	48.2	48.4	48.6
Race¶												
White	77.0	66.6	69.9	66.7	64.8	61.6	60.6	59.6	59.1	58.4	58.7	56.2
Black	23.0	33.4	30.1	29.8	31.9	33.9	34.7	35.0	35.3	35.9	35.4	37.3
Other**	—	—	—	3.5	3.3	4.5	4.7	5.4	5.6	5.7	5.9	6.5
Ethnicity												
Hispanic	—	—	—	—	11.4	15.0	14.1	15.1	15.7	15.6	17.1	17.3
Non-Hispanic	—	—	—	—	88.6	85.0	85.9	84.9	84.3	84.4	82.9	82.7
Marital status												
Married	29.7	24.6	23.1	19.3	21.7	20.8	19.9	19.7	19.6	19.0	18.9	19.2
Unmarried	70.3	75.4	76.9	80.7	78.3	79.2	80.1	80.3	80.4	81.0	81.1	80.8
No. of live births††												
0	49.4	47.7	58.4	56.3	49.2	45.9	46.2	45.2	44.2	42.2	41.1	40.6
1	18.2	20.7	19.4	21.6	24.4	25.9	25.9	26.5	26.8	27.6	27.9	27.9
2	13.3	15.4	13.7	14.5	16.9	18.0	17.8	18.0	18.4	19.1	19.6	19.8
3	8.7	8.3	5.3	5.1	6.1	6.7	6.7	6.8	7.0	7.3	7.5	7.7
≥4	10.4	7.9	3.2	2.5	3.4	3.5	3.4	3.5	3.6	3.8	3.9	4.0
Type of procedure												
Curettage	88.6	92.8	95.5	97.5	98.9	99.0	99.1	98.9	98.8	98.3	98.3	98.2
Suction curettage	65.2	82.6	89.8	94.6	97.2	95.8	96.5	96.6	96.5	97.3	96.8	96.0
Sharp curettage	23.4	10.2	5.7	2.9	1.7	3.2	2.6	2.3	2.3	1.0	1.5	2.2
Intrauterine instillation	10.4	6.0	3.1	1.7	0.8	0.6	0.5	0.5	0.4	0.4	0.3	0.2
Other§§	1.0	1.2	1.4	0.8	0.3	0.4	0.4	0.6	0.8	1.3	1.4	1.6
Weeks of gestation												
≤8	34.0	47.0	51.7	50.3	51.6	52.1	53.7	54.0	54.6	55.4	55.7	57.6
≤6	—	—	—	—	—	14.3¶¶¶	15.7***	15.7***	16.3†††	17.6§§§	19.2¶¶¶	21.9****
7	—	—	—	—	—	15.6¶¶¶	16.5***	17.1***	17.4†††	18.1§§§	17.8¶¶¶	17.6****
8	—	—	—	—	—	22.2¶¶¶	21.6***	21.2***	21.0†††	19.6§§§	18.8¶¶¶	18.2****
9–10	30.7	28.1	26.2	26.6	25.3	24.2	23.5	23.1	22.6	22.0	21.5	20.2
11–12	17.5	14.4	12.2	12.5	11.7	12.1	10.9	10.9	11.0	10.7	10.8	10.2
13–15	8.4	4.5	5.1	5.9	6.4	6.0	6.3	6.3	6.0	6.2	6.4	6.2
16–20	8.2	5.1	3.9	3.9	4.0	4.2	4.3	4.3	4.3	4.3	4.1	4.3
≥21	1.2	0.9	0.9	0.8	1.0	1.4	1.3	1.4	1.5	1.4	1.4	1.5

* See Table 2 for number of areas reporting each year.

† With one exception, no characteristics were available for the excluded states in previous years.

§ Based on known values in data from all areas reporting a given characteristic with no more than 15% unknowns. The number of areas adequately reporting a given characteristic thus varied. For 1999, the number of areas included for residence was 45; age, 47; race, 37; ethnicity, 26; marital status, 37; number of live births, 41; type of procedure, 42; and weeks of gestation, 43.

¶ Black race reported as black and other races through 1984. From 1990 through 1997, one state included "other" races with blacks.

** Includes all other races.

†† For 1972 and 1976, data indicate number of living children.

§§ Includes hysterotomy and hysterectomy, procedures reported as "other," and medical (nonsurgical) procedures. For 1999, the number of medical (nonsurgical) procedures reported was 6,278.

¶¶ Data were for 36 of 39 areas reporting weeks of gestation.

*** Data were for 38 of 40 areas reporting weeks of gestation.

††† Data were for 37 of 40 areas reporting weeks of gestation.

§§§ Data were for 40 of 42 areas reporting weeks of gestation.

¶¶¶ Data were for 42 of 44 areas reporting weeks of gestation.

**** Data were for 41 of 43 areas reporting weeks of gestation.

— Not available.

TABLE 2. Number, ratio,* and rate† of legal abortions and source of reporting for all reporting areas and for the 48 areas that reported in 1999, by year—United States, 1970–1999

Year	No. of legal abortions	Ratio*	Rate†	No. of areas reporting	
				Central health agency‡	Hospitals/facilities¶
All Reporting Areas					
1970	193,491	52	5	8	7
1971	485,816	137	11	19	7
1972	586,760	180	13	21	8
1973	615,831	196	14	26	26
1974	763,476	242	17	37	15
1975	854,853	272	18	39	13
1976	988,267	312	21	41	11
1977	1,079,430	325	22	46	6
1978	1,157,776	347	23	48	4
1979	1,251,921	358	24	47	5
1980	1,297,606	359	25	47	5
1981	1,300,760	358	24	46	6
1982	1,303,980	354	24	46	6
1983	1,268,987	349	23	46	6
1984	1,333,521	364	24	44	8
1985	1,328,570	354	24	44	8
1986	1,328,112	354	23	43	9
1987	1,353,671	356	24	45	7
1988	1,371,285	352	24	45	7
1989	1,396,658	346	24	45	7
1990	1,429,247	344	24	46	6
1991	1,388,937	338	24	47	5
1992	1,359,146	334	23	47	5
1993	1,330,414	333	23	47	5
1994	1,267,415	321	21	47	5
1995	1,210,883	311	20	48	4
1996	1,225,937	315**	21	48	4
1997	1,186,039	306	20	48	4
1998	884,273	264	17	48	0
1999	861,789	256	17	48	0
48 Reporting Areas††					
1995	908,243	277	18	47	1
1996	934,549	285**	18	47	1
1997	900,171	274	17	46	2
1998	884,273	264	17	48	0
1999	861,789	256	17	48	0

* Number of abortions per 1,000 live births.

† Number of abortions per 1,000 women aged 15–44 years.

‡ State health departments and the health departments of New York City and the District of Columbia.

¶ Hospitals or other medical facilities in state.

** Beginning in 1996, the ratio was based on births reported by the National Center for Health Statistics, CDC.

†† Without Alaska, California, New Hampshire, and Oklahoma, which did not report number of legal abortions for 1999.

TABLE 3. Reported number,* ratio,[†] and rate[§] of legal abortions by residence and occurrence, and percentage of abortions obtained by out-of-state residents,[¶] by state of occurrence—United States, 1999

State	Residence			Occurrence			Percentage of legal abortions obtained by out-of-state residents
	No. of legal abortions	Ratio	Rate	No. of legal abortions	Ratio	Rate	
Alabama	11,972	193	12	13,273	214	14	17.4
Alaska**	—	—	—	—	—	—	—
Arizona ^{††}	11,024	136	11	10,765	133	11	1.0
Arkansas	5,614	153	10	5,755	157	11	13.1
California**	—	—	—	—	—	—	—
Colorado	4,385	71	5	5,017	81	6	15.0
Connecticut	13,086	302	19	12,958	299	19	3.4
Delaware	3,540	332	20	5,161	483	30	34.8
Dist. of Columbia	3,881	516	31	7,373	980	59	54.9
Florida ^{§§}	—	—	—	83,971	426	28	—
Georgia	30,405	240	17	33,095	261	18	9.5
Hawaii	4,397	258	18	4,404	258	18	0.5
Idaho	1,580	80	6	867	44	3	3.2
Illinois	42,563	234	16	45,924	252	17	9.4
Indiana	14,238	165	11	12,109	141	9	3.6
Iowa ^{¶¶}	6,989	186	12	6,106 ^{¶¶}	163	10	—
Kansas	6,435	166	11	12,395	320	22	48.6
Kentucky	6,758	124	8	5,469	101	6	20.2
Louisiana ^{§§}	—	—	—	12,008	179	12	—
Maine	2,366	174	9	2,427	178	9	3.0
Maryland	15,557	216	13	11,164	155	9	4.1
Massachusetts ^{††}	25,047	309	18	26,852	332	19	6.1
Michigan	25,898	194	12	26,207	196	12	3.1
Minnesota	13,567	206	13	14,342	217	14	8.9
Mississippi	7,206	169	11	3,878	91	6	4.7
Missouri	15,838	210	13	8,113	108	7	9.5
Montana	2,150	199	12	2,499	232	14	14.6
Nebraska	3,831	160	11	4,565	191	13	18.4
Nevada	5,208	177	14	5,807	198	15	10.4
New Hampshire**	—	—	—	—	—	—	—
New Jersey	35,293	309	20	35,126	308	20	6.0
New Mexico	5,644	208	15	5,098	187	14	5.0
New York	133,495	522	33	137,234	537	34	—
City	95,978	804	—	102,334 ^{***}	858	—	6.6 ^{†††}
State	37,517 ^{§§§}	275	—	34,900	256	—	5.5 ^{†††}
North Carolina	28,459	250	17	32,081	282	19	14.3
North Dakota	960	126	7	1,345	176	10	34.2
Ohio	34,859	228	14	37,041	243	15	7.8
Oklahoma**	—	—	—	—	—	—	—
Oregon	12,562	278	18	14,145	313	20	12.6
Pennsylvania	37,097	255	15	34,494	237	14	4.7
Rhode Island	3,995	323	18	5,004	405	23	22.0
South Carolina	11,122	202	13	7,687	140	9	5.6
South Dakota	961	91	6	740	70	5	18.6
Tennessee	15,472	199	13	16,924	218	14	18.8
Texas	77,506	222	17	80,739	231	18	3.7
Utah	3,250	70	7	3,381	73	7	6.7
Vermont	1,476	225	11	1,748	266	13	16.8
Virginia	28,388	297	18	27,354	287	17	6.3
Washington	26,062	327	20	25,523	321	20	4.3
West Virginia	2,730	132	7	2,498	121	7	13.3
Wisconsin	12,113	178	11	11,013	161	10	2.8
Wyoming	833	136	8	110	18	1	1.8
Other residence ^{¶¶¶}	2,537	—	—	NA	NA	NA	NA
Total known	758,349			861,789	256	17	8.8

TABLE 3. (Continued) Reported number,* ratio,[†] and rate[§] of legal abortions by residence and occurrence, and percentage of abortions obtained by out-of-state residents,[¶] by state of occurrence—United States, 1999

State	Residence			Occurrence			Percentage of legal abortions obtained by out-of-state residents
	No. of legal abortions	Ratio	Rate	No. of legal abortions	Ratio	Rate	
Unknown residence****	4,886						
Not reported by residence††††	98,554						
Total	861,789	256	17				

* Abortion data reported by central health agencies.

† Number of abortions per 1,000 live births. **Source:** Number of live births obtained from Ventura SJ, Martin JA, Curtin SC, Menacker F, Hamilton BE. Births: final data for 1999. Hyattsville, MD: US Department of Health and Human Services, CDC, National Center for Health Statistics, 2001. Natl Vital Stat Rep; vol 49, no. 1.

§ Number of abortions per 1,000 women aged 15–44 years. **Source:** Number of women in this age group was obtained from the US Census Bureau. Table ST-99-8: Population estimates for the U.S., Regions, Divisions, and States by 5-year age Groups and Sex: Time Series Estimates, July 1, 1990 to July 1, 1999, and April 1, 1990, Census Population Counts (includes revised population counts). Washington, DC: US Census Bureau, Population Division, Population Estimates Program.

¶ Based on number of abortions for which residence of women was known.

** State did not report abortions.

†† Reported numbers of abortions for in-state residents without detailed information regarding out-of-state residents.

§§ State did not report abortions by residence; therefore, no information is available regarding in-state residents.

¶¶ Reported for own residents only.

*** Reported by the New York City Department of Health.

††† Percentage based on number of abortions reported as “out of reporting area.”

§§§ Abortions for women whose state of residence was listed as New York.

¶¶¶ Women whose residence was listed as Canada, Mexico, or Other.

**** Reported as unknown residence (3,249) or out-of-state residence, but not specified (1,637).

†††† Total for states that did not report abortions by residence.

— Not available; NA, not applicable.

TABLE 4. Reported legal abortions, by age group of women who obtained an abortion and state of occurrence—selected states,* United States, 1999

State	Age group (yrs)												Total					
	<15		15–19		20–24		25–29		30–34		35–39				≥40		Unknown	
	No.	(%)	No.	(%)	No.	(%)	No.	(%)	No.	(%)	No.	(%)	No.	(%)	No.	(%) [†]		
Alabama	131	(1.0)	2,609	(19.7)	4,779	(36.0)	3,084	(23.2)	1,470	(11.1)	925	(7.0)	268	(2.0)	7	(0.1)	13,273	(100.0)
Arizona	60	(0.6)	2,000	(18.6)	3,217	(29.9)	2,271	(21.1)	1,294	(12.0)	825	(7.7)	247	(2.3)	851	(7.9)	10,765	(100.0)
Arkansas	51	(0.9)	1,139	(19.8)	1,947	(33.8)	1,352	(23.5)	677	(11.8)	388	(6.7)	117	(2.0)	84	(1.5)	5,755	(100.0)
Colorado	29	(0.6)	1,131	(22.5)	1,574	(31.4)	969	(19.3)	662	(13.2)	455	(9.1)	174	(3.5)	23	(0.5)	5,017	(100.0)
Connecticut	91	(0.7)	2,671	(20.6)	4,051	(31.3)	2,827	(21.8)	1,778	(13.7)	1,079	(8.3)	349	(2.7)	112	(0.9)	12,958	(100.0)
Delaware [§]	22	(0.7)	773	(23.0)	1,117	(33.2)	701	(20.8)	416	(12.4)	265	(7.9)	72	(2.1)	0	(0.0)	3,366	(100.0)
Dist. of Columbia	43	(0.6)	1,367	(18.5)	2,580	(35.0)	1,703	(23.1)	973	(13.2)	549	(7.4)	158	(2.1)	0	(0.0)	7,373	(100.0)
Georgia	299	(0.9)	5,894	(17.8)	10,534	(31.8)	8,370	(25.3)	4,697	(14.2)	2,540	(7.7)	761	(2.3)	0	(0.0)	33,095	(100.0)
Hawaii	35	(0.8)	965	(21.9)	1,292	(29.3)	946	(21.5)	623	(14.1)	401	(9.1)	138	(3.1)	4	(0.1)	4,404	(100.0)
Idaho	3	(0.3)	228	(26.3)	246	(28.4)	164	(18.9)	117	(13.5)	73	(8.4)	35	(4.0)	1	(0.1)	867	(100.0)
Illinois [¶]	350	(0.8)	9,257	(20.2)	14,734	(32.1)	10,738	(23.4)	6,005	(13.1)	3,484	(7.6)	1,152	(2.5)	204	(0.4)	45,924	(100.0)
Indiana	69	(0.6)	2,329	(19.2)	4,236	(35.0)	2,750	(22.7)	1,438	(11.9)	927	(7.7)	258	(2.1)	102	(0.8)	12,109	(100.0)
Iowa [§]	42	(0.7)	1,268	(20.8)	2,050	(33.6)	1,252	(20.5)	780	(12.8)	498	(8.2)	205	(3.4)	11	(0.2)	6,106	(100.0)
Kansas	114	(0.9)	2,619	(21.1)	4,140	(33.4)	2,724	(22.0)	1,494	(12.1)	957	(7.7)	347	(2.8)	0	(0.0)	12,395	(100.0)
Kentucky	38	(0.7)	1,027	(18.8)	1,801	(32.9)	1,235	(22.6)	697	(12.7)	422	(7.7)	138	(2.5)	111	(2.0)	5,469	(100.0)
Louisiana	103	(0.9)	2,234	(18.6)	4,253	(35.4)	2,761	(23.0)	1,435	(12.0)	903	(7.5)	249	(2.1)	70	(0.6)	12,008	(100.0)
Maine	17	(0.7)	566	(23.3)	765	(31.5)	460	(19.0)	297	(12.2)	208	(8.6)	92	(3.8)	22	(0.9)	2,427	(100.0)
Maryland	106	(0.9)	2,039	(18.3)	3,537	(31.7)	2,643	(23.7)	1,702	(15.2)	871	(7.8)	266	(2.4)	0	(0.0)	11,164	(100.0)
Massachusetts	125	(0.5)	4,347	(16.2)	7,728	(28.8)	5,819	(21.7)	3,922	(14.6)	2,559	(9.5)	882	(3.3)	1,470	(5.5)	26,852	(100.0)
Michigan	165	(0.6)	4,829	(18.4)	8,404	(32.1)	6,243	(23.8)	3,595	(13.7)	2,182	(8.3)	682	(2.6)	107	(0.4)	26,207	(100.0)
Minnesota	69	(0.5)	2,507	(17.5)	4,462	(31.1)	3,319	(23.1)	2,155	(15.0)	1,320	(9.2)	506	(3.5)	4	(0.0)	14,342	(100.0)
Mississippi	39	(1.0)	768	(19.8)	1,387	(35.8)	904	(23.3)	448	(11.6)	244	(6.3)	87	(2.2)	1	(0.0)	3,878	(100.0)
Missouri	61	(0.8)	1,385	(17.1)	2,576	(31.8)	1,875	(23.1)	1,185	(14.6)	763	(9.4)	262	(3.2)	6	(0.1)	8,113	(100.0)
Montana	9	(0.4)	637	(25.5)	765	(30.6)	471	(18.8)	282	(11.3)	245	(9.8)	88	(3.5)	2	(0.1)	2,499	(100.0)
Nebraska	23	(0.5)	1,003	(22.0)	1,511	(33.1)	995	(21.8)	522	(11.4)	364	(8.0)	147	(3.2)	0	(0.0)	4,565	(100.0)
Nevada	28	(0.5)	1,050	(18.1)	1,604	(27.6)	1,354	(23.3)	879	(15.1)	550	(9.5)	170	(2.9)	172	(3.0)	5,807	(100.0)
New Jersey	207	(0.6)	6,498	(18.5)	11,103	(31.6)	8,254	(23.5)	5,012	(14.3)	2,897	(8.2)	1,059	(3.0)	96	(0.3)	35,126	(100.0)
New Mexico	34	(0.7)	1,034	(20.3)	1,654	(32.4)	1,130	(22.2)	609	(11.9)	407	(8.0)	185	(3.6)	45	(0.9)	5,098	(100.0)
New York	861	(0.6)	23,971	(17.5)	40,835	(29.8)	32,047	(23.4)	22,052	(16.1)	13,009	(9.5)	4,182	(3.0)	277	(0.2)	137,234	(100.0)
City	666	(0.7)	16,525	(16.1)	29,857	(29.2)	24,758	(24.2)	17,337	(16.9)	9,875	(9.6)	3,138	(3.1)	178	(0.2)	102,334	(100.0)
State	195	(0.6)	7,446	(21.3)	10,978	(31.5)	7,289	(20.9)	4,715	(13.5)	3,134	(9.0)	1,044	(3.0)	99	(0.3)	34,900	(100.0)
North Carolina	254	(0.8)	5,497	(17.1)	10,713	(33.4)	7,606	(23.7)	4,000	(12.5)	2,298	(7.2)	721	(2.2)	992	(3.1)	32,081	(100.0)
North Dakota	3	(0.2)	297	(22.1)	481	(35.8)	262	(19.5)	154	(11.4)	103	(7.7)	45	(3.3)	0	(0.0)	1,345	(100.0)
Ohio	279	(0.8)	6,997	(18.9)	12,391	(33.5)	8,774	(23.7)	4,797	(13.0)	2,857	(7.7)	920	(2.5)	26	(0.1)	37,041	(100.0)
Oregon	68	(0.5)	2,958	(20.9)	4,519	(31.9)	3,080	(21.8)	1,891	(13.4)	1,232	(8.7)	380	(2.7)	17	(0.1)	14,145	(100.0)
Pennsylvania	294	(0.9)	6,421	(18.6)	11,035	(32.0)	7,788	(22.6)	4,896	(14.2)	3,039	(8.8)	1,021	(3.0)	0	(0.0)	34,494	(100.0)
Rhode Island	18	(0.4)	886	(17.7)	1,658	(33.1)	1,136	(22.7)	712	(14.2)	439	(8.8)	152	(3.0)	3	(0.1)	5,004	(100.0)
South Carolina	67	(0.9)	1,531	(19.9)	2,516	(32.7)	1,720	(22.4)	1,062	(13.8)	631	(8.2)	160	(2.1)	0	(0.0)	7,687	(100.0)
South Dakota	2	(0.3)	182	(24.6)	258	(34.9)	126	(17.0)	83	(11.2)	54	(7.3)	31	(4.2)	4	(0.5)	740	(100.0)
Tennessee	138	(0.8)	3,137	(18.5)	5,802	(34.3)	4,104	(24.2)	2,104	(12.4)	1,257	(7.4)	353	(2.1)	29	(0.2)	16,924	(100.0)
Texas	367	(0.5)	13,535	(16.8)	26,687	(33.1)	19,323	(23.9)	10,972	(13.6)	6,570	(8.1)	2,380	(2.9)	905	(1.1)	80,739	(100.0)
Utah	12	(0.4)	634	(18.8)	1,113	(32.9)	771	(22.8)	454	(13.4)	286	(8.5)	110	(3.3)	1	(0.0)	3,381	(100.0)
Vermont	12	(0.7)	360	(20.6)	582	(33.3)	329	(18.8)	228	(13.0)	154	(8.8)	82	(4.7)	1	(0.1)	1,748	(100.0)
Virginia	178	(0.7)	4,571	(16.7)	8,850	(32.4)	6,312	(23.1)	3,939	(14.4)	2,523	(9.2)	819	(3.0)	162	(0.6)	27,354	(100.0)
Washington	143	(0.6)	5,226	(20.5)	7,966	(31.2)	5,422	(21.2)	3,516	(13.8)	2,283	(8.9)	861	(3.4)	106	(0.4)	25,523	(100.0)
West Virginia	20	(0.8)	490	(19.6)	929	(37.2)	546	(21.9)	275	(11.0)	185	(7.4)	53	(2.1)	0	(0.0)	2,498	(100.0)
Wisconsin [§]	68	(0.6)	2,026	(18.9)	3,533	(33.0)	2,424	(22.6)	1,425	(13.3)	926	(8.7)	301	(2.8)	0	(0.0)	10,703	(100.0)
Wyoming	1	(0.9)	27	(24.5)	28	(25.5)	26	(23.6)	9	(8.2)	13	(11.8)	4	(3.6)	2	(1.8)	110	(100.0)
Total	5,148	(0.7)	142,920	(18.4)	247,943	(32.0)	179,110	(23.1)	107,733	(13.9)	65,160	(8.4)	21,669	(2.8)	6,030	(0.8)	775,713	(100.0)
Abortion ratio**	709		375		316		208		152		193		329				245	
Abortion rate††	2		18		35		25		14		7		2				15	

* Data from 45 states, the District of Columbia, and New York City.

† Percentages might not add to 100.0 because of rounding.

§ Includes residents only.

¶ Unpublished small numbers distributed as the known numbers using data from public use tape.

** Calculated as the number of legal abortions obtained by women in a given age group per 1,000 live births to women in the same age group for these states. For each state, data for women of unknown age were distributed according to the known age distribution for that state.

†† Calculated as the number of legal abortions obtained by women in a given age group per 1,000 women in the same age group for these states. Women aged 13–14 years were used for the denominator for the <15 years age group, women aged 40–44 years were used for the denominator for the ≥40 years age group, and women aged 15–44 years were used as the denominator for the total group. For each state, data for women of unknown age were distributed according to the known age distribution for that state.

TABLE 5. Reported legal abortions obtained by adolescents, by known age and state of occurrence—selected states,* United States, 1999

State	Age (yrs)													
	<15		15		16		17		18		19		Total	
	No.	(%)	No.	(%)	No.	(%)	No.	(%)	No.	(%)	No.	(%)	No.	(%) [†]
Alabama	131	(4.8)	193	(7.0)	343	(12.5)	378	(13.8)	751	(27.4)	944	(34.5)	2,740	(100.0)
Arizona	60	(2.9)	119	(5.8)	256	(12.4)	357	(17.3)	630	(30.6)	638	(31.0)	2,060	(100.0)
Arkansas	51	(4.3)	72	(6.1)	123	(10.3)	203	(17.1)	366	(30.8)	375	(31.5)	1,190	(100.0)
Colorado	29	(2.5)	77	(6.6)	174	(15.0)	236	(20.3)	297	(25.6)	347	(29.9)	1,160	(100.0)
Connecticut	91	(3.3)	162	(5.9)	403	(14.6)	613	(22.2)	694	(25.1)	799	(28.9)	2,762	(100.0)
Delaware [§]	22	(2.8)	41	(5.2)	104	(13.1)	149	(18.7)	223	(28.1)	256	(32.2)	795	(100.0)
Dist. of Columbia	43	(3.0)	76	(5.4)	178	(12.6)	283	(20.1)	381	(27.0)	449	(31.8)	1,410	(100.0)
Georgia	299	(4.8)	415	(6.7)	736	(11.9)	1,077	(17.4)	1,702	(27.5)	1,964	(31.7)	6,193	(100.0)
Hawaii	35	(3.5)	73	(7.3)	132	(13.2)	190	(19.0)	260	(26.0)	310	(31.0)	1,000	(100.0)
Idaho	3	(1.3)	12	(5.2)	32	(13.9)	27	(11.7)	86	(37.2)	71	(30.7)	231	(100.0)
Indiana	69	(2.9)	134	(5.6)	247	(10.3)	348	(14.5)	744	(31.0)	856	(35.7)	2,398	(100.0)
Iowa [§]	42	(3.2)	80	(6.1)	166	(12.7)	200	(15.3)	392	(29.9)	430	(32.8)	1,310	(100.0)
Kansas	114	(4.2)	169	(6.2)	369	(13.5)	433	(15.8)	777	(28.4)	871	(31.9)	2,733	(100.0)
Louisiana	103	(4.4)	179	(7.7)	248	(10.6)	319	(13.6)	680	(29.1)	808	(34.6)	2,337	(100.0)
Maine	17	(2.9)	35	(6.0)	76	(13.0)	108	(18.5)	179	(30.7)	168	(28.8)	583	(100.0)
Maryland	106	(4.9)	135	(6.3)	245	(11.4)	423	(19.7)	585	(27.3)	651	(30.3)	2,145	(100.0)
Massachusetts	125	(2.8)	232	(5.2)	476	(10.6)	762	(17.0)	1,332	(29.8)	1,545	(34.5)	4,472	(100.0)
Michigan	165	(3.3)	328	(6.6)	562	(11.3)	794	(15.9)	1,487	(29.8)	1,658	(33.2)	4,994	(100.0)
Minnesota	69	(2.7)	132	(5.1)	262	(10.2)	456	(17.7)	757	(29.4)	900	(34.9)	2,576	(100.0)
Mississippi	39	(4.8)	68	(8.4)	77	(9.5)	105	(13.0)	252	(31.2)	266	(33.0)	807	(100.0)
Missouri	61	(4.2)	103	(7.1)	140	(9.7)	195	(13.5)	446	(30.8)	501	(34.6)	1,446	(100.0)
Montana	9	(1.4)	39	(6.0)	102	(15.8)	128	(19.8)	158	(24.5)	210	(32.5)	646	(100.0)
Nebraska	23	(2.2)	68	(6.6)	111	(10.8)	178	(17.3)	319	(31.1)	327	(31.9)	1,026	(100.0)
Nevada	28	(2.6)	79	(7.3)	141	(13.1)	233	(21.6)	286	(26.5)	311	(28.8)	1,078	(100.0)
New Jersey	207	(3.1)	447	(6.7)	794	(11.8)	1,294	(19.3)	1,839	(27.4)	2,124	(31.7)	6,705	(100.0)
New Mexico	34	(3.2)	76	(7.1)	147	(13.8)	205	(19.2)	276	(25.8)	330	(30.9)	1,068	(100.0)
New York	861	(3.5)	1,636	(6.6)	3,182	(12.8)	4,924	(19.8)	6,541	(26.3)	7,688	(31.0)	24,832	(100.0)
City	666	(3.9)	1,159	(6.7)	2,204	(12.8)	3,390	(19.7)	4,481	(26.1)	5,291	(30.8)	17,191	(100.0)
State	195	(2.6)	477	(6.2)	978	(12.8)	1,534	(20.1)	2,060	(27.0)	2,397	(31.4)	7,641	(100.0)
North Carolina	254	(4.4)	325	(5.7)	648	(11.3)	893	(15.5)	1,657	(28.8)	1,974	(34.3)	5,751	(100.0)
North Dakota	3	(1.0)	22	(7.3)	31	(10.3)	45	(15.0)	97	(32.3)	102	(34.0)	300	(100.0)
Ohio	279	(3.8)	483	(6.6)	796	(10.9)	1,243	(17.1)	2,088	(28.7)	2,387	(32.8)	7,276	(100.0)
Oregon	68	(2.2)	199	(6.6)	319	(10.5)	608	(20.1)	839	(27.7)	993	(32.8)	3,026	(100.0)
Pennsylvania	294	(4.4)	482	(7.2)	711	(10.6)	925	(13.8)	2,059	(30.7)	2,244	(33.4)	6,715	(100.0)
Rhode Island	18	(2.0)	43	(4.8)	91	(10.1)	131	(14.5)	264	(29.2)	357	(39.5)	904	(100.0)
South Carolina	67	(4.2)	95	(5.9)	190	(11.9)	330	(20.7)	429	(26.8)	487	(30.5)	1,598	(100.0)
South Dakota	2	(1.1)	13	(7.1)	21	(11.4)	25	(13.6)	66	(35.9)	57	(31.0)	184	(100.0)
Tennessee	138	(4.2)	208	(6.4)	334	(10.2)	497	(15.2)	959	(29.3)	1,139	(34.8)	3,275	(100.0)
Texas	367	(2.6)	643	(4.6)	1,431	(10.3)	2,532	(18.2)	3,707	(26.7)	5,222	(37.6)	13,902	(100.0)
Utah	12	(1.9)	37	(5.7)	81	(12.5)	96	(14.9)	181	(28.0)	239	(37.0)	646	(100.0)
Vermont	12	(3.2)	33	(8.9)	43	(11.6)	67	(18.0)	101	(27.2)	116	(31.2)	372	(100.0)
Virginia	178	(3.7)	268	(5.6)	486	(10.2)	747	(15.7)	1,362	(28.7)	1,708	(36.0)	4,749	(100.0)
Washington	143	(2.7)	328	(6.1)	659	(12.3)	1,016	(18.9)	1,501	(28.0)	1,722	(32.1)	5,369	(100.0)
West Virginia	20	(3.9)	28	(5.5)	75	(14.7)	77	(15.1)	140	(27.5)	170	(33.3)	510	(100.0)
Wisconsin [§]	68	(3.2)	119	(5.7)	240	(11.5)	328	(15.7)	635	(30.3)	704	(33.6)	2,094	(100.0)
Wyoming	1	(3.6)	2	(7.1)	2	(7.1)	6	(21.4)	5	(17.9)	12	(42.9)	28	(100.0)
Total	4,760	(3.5)	8,508	(6.2)	15,984	(11.6)	24,184	(17.6)	38,530	(28.0)	45,430	(33.1)	137,396	(100.0)
Abortion ratio [¶]	708		505		423		367		387		343		383	
Abortion rate**	2		6		11		17		27		30		14	

* Data from 43 states, the District of Columbia, and New York City.

† Percentages might not add to 100.0 because of rounding.

§ Includes residents only.

¶ Calculated as the number of legal abortions obtained by women of a given age per 1,000 live births to women of the same age for these states. For each state, data for women whose age was unknown were distributed according to the known age distribution for that state.

** Calculated as the number of legal abortions obtained by women of a given age per 1,000 women of the same age for these states; women aged 13–14 years were used for the denominator for the <15 years age group. For each state, data for women whose age was unknown were distributed according to the known age distribution for that state.

TABLE 6. Reported legal abortions, by weeks of gestation* and state of occurrence—selected states,† United States, 1999

State	Weeks of gestation												Total			
	≤8		9–10		11–12		13–15		16–20		≥21				Unknown	
	No.	(%)	No.	(%)	No.	(%)	No.	(%)	No.	(%)	No.	(%)	No.	(%)	No.	(%) [§]
Alabama	7,293	(54.9)	3,057	(23.0)	1,395	(10.5)	1,074	(8.1)	402	(3.0)	32	(0.2)	20	(0.2)	13,273	(100.0)
Arizona [¶]	5,457	(50.7)	2,463	(22.9)	1,022	(9.5)	957	(8.9)	505	(4.7)	4	(0.0)	357	(3.3)	10,765	(100.0)
Arkansas	3,192	(55.5)	1,037	(18.0)	593	(10.3)	400	(7.0)	434	(7.5)	44	(0.8)	55	(1.0)	5,755	(100.0)
Colorado	2,419	(48.2)	1,167	(23.3)	672	(13.4)	328	(6.5)	192	(3.8)	178	(3.5)	61	(1.2)	5,017	(100.0)
Connecticut [¶]	7,693**	(59.4)	2,706**	(20.9)	1,358**	(10.5)	802	(6.2)	320	(2.5)	7	(0.1)	72	(0.6)	12,958	(100.0)
Delaware ^{¶,††}	1,803	(53.6)	760	(22.6)	426	(12.7)	229	(6.8)	130	(3.9)	5	(0.1)	13	(0.4)	3,366	(100.0)
Dist. of Columbia	3,419**	(46.4)	2,222**	(30.1)	682**	(9.2)	565	(7.7)	321	(4.4)	0	(0.0)	164	(2.2)	7,373	(100.0)
Georgia [¶]	16,093	(48.6)	7,392	(22.3)	3,904	(11.8)	2,201	(6.7)	2,204	(6.7)	1,105	(3.3)	196	(0.6)	33,095	(100.0)
Hawaii [¶]	2,145	(48.7)	1,100	(25.0)	513	(11.6)	276	(6.3)	270	(6.1)	48	(1.1)	52	(1.2)	4,404	(100.0)
Idaho	487	(56.2)	236	(27.2)	107	(12.3)	19	(2.2)	8	(0.9)	7	(0.8)	3	(0.3)	867	(100.0)
Indiana [¶]	7,480	(61.8)	2,850	(23.5)	1,293	(10.7)	158	(1.3)	137	(1.1)	0	(0.0)	191	(1.6)	12,109	(100.0)
Iowa ^{††}	4,138	(67.8)	874	(14.3)	527	(8.6)	279	(4.6)	247	(4.0)	38	(0.6)	3	(0.0)	6,106	(100.0)
Kansas [¶]	7,430	(59.9)	1,888	(15.2)	1,101	(8.9)	708	(5.7)	603	(4.9)	665	(5.4)	0	(0.0)	12,395	(100.0)
Kentucky	2,633	(48.1)	1,227	(22.4)	611	(11.2)	476	(8.7)	394	(7.2)	89	(1.6)	39	(0.7)	5,469	(100.0)
Louisiana [¶]	5,559	(46.3)	2,668	(22.2)	1,516	(12.6)	1,167	(9.7)	646	(5.4)	335	(2.8)	117	(1.0)	12,008	(100.0)
Maine ^{§§}	1,427	(58.8)	673	(27.7)	297	(12.2)	17	(0.7)	7	(0.3)	2	(0.1)	4	(0.2)	2,427	(100.0)
Maryland [¶]	7,973	(71.4)	1,865	(16.7)	754	(6.8)	337	(3.0)	213	(1.9)	22	(0.2)	0	(0.0)	11,164	(100.0)
Michigan	15,392	(58.7)	5,020	(19.2)	2,343	(8.9)	1,794	(6.8)	1,071	(4.1)	245	(0.9)	342	(1.3)	26,207	(100.0)
Minnesota [¶]	8,564	(59.7)	2,744	(19.1)	1,612	(11.2)	702	(4.9)	598	(4.2)	100	(0.7)	22	(0.2)	14,342	(100.0)
Mississippi	2,034	(52.4)	902	(23.3)	502	(12.9)	350	(9.0)	33	(0.9)	17	(0.4)	40	(1.0)	3,878	(100.0)
Missouri	4,550	(56.1)	1,974	(24.3)	923	(11.4)	386	(4.8)	194	(2.4)	30	(0.4)	56	(0.7)	8,113	(100.0)
Montana [¶]	1,224	(49.0)	486	(19.4)	340	(13.6)	225	(9.0)	150	(6.0)	50	(2.0)	24	(1.0)	2,499	(100.0)
Nevada	3,298	(56.8)	1,191	(20.5)	602	(10.4)	354	(6.1)	220	(3.8)	59	(1.0)	83	(1.4)	5,807	(100.0)
New Jersey	18,837	(53.6)	6,732	(19.2)	2,601	(7.4)	3,051	(8.7)	2,838	(8.1)	812	(2.3)	255	(0.7)	35,126	(100.0)
New Mexico ^{¶¶}	2,687	(52.7)	1,081	(21.2)	633	(12.4)	417	(8.2)	229	(4.5)	21	(0.4)	30	(0.6)	5,098	(100.0)
New York City	62,262	(60.8)	17,219	(16.8)	8,782	(8.6)	5,557	(5.4)	5,271	(5.2)	2,316	(2.3)	927	(0.9)	102,334	(100.0)
North Carolina	21,130	(65.9)	4,309	(13.4)	2,553	(8.0)	1,447	(4.5)	548	(1.7)	74	(0.2)	2,020	(6.3)	32,081	(100.0)
North Dakota [¶]	794	(59.0)	271	(20.1)	139	(10.3)	111	(8.3)	19	(1.4)	0	(0.0)	11	(0.8)	1,345	(100.0)
Ohio [¶]	19,212	(51.9)	7,979	(21.5)	4,242	(11.5)	2,855	(7.7)	2,070	(5.6)	682	(1.8)	1	(0.0)	37,041	(100.0)
Oregon [¶]	6,874	(48.6)	3,043	(21.5)	1,662	(11.7)	974	(6.9)	728	(5.1)	325	(2.3)	539	(3.8)	14,145	(100.0)
Pennsylvania	18,032	(52.3)	8,015	(23.2)	3,857	(11.2)	2,468	(7.2)	1,595	(4.6)	526	(1.5)	1	(0.0)	34,494	(100.0)
Rhode Island	3,229	(64.5)	914	(18.3)	393	(7.9)	278	(5.6)	166	(3.3)	12	(0.2)	12	(0.2)	5,004	(100.0)
South Carolina	4,619	(60.1)	2,017	(26.2)	954	(12.4)	51	(0.7)	27	(0.4)	10	(0.1)	9	(0.1)	7,687	(100.0)
South Dakota	354	(47.8)	240	(32.4)	124	(16.8)	14	(1.9)	7	(0.9)	0	(0.0)	1	(0.1)	740	(100.0)
Tennessee [¶]	9,843	(58.2)	3,889	(23.0)	2,440	(14.4)	570	(3.4)	45	(0.3)	21	(0.1)	116	(0.7)	16,924	(100.0)
Texas [¶]	47,199	(58.5)	15,709	(19.5)	7,540	(9.3)	5,406	(6.7)	3,275	(4.1)	979	(1.2)	631	(0.8)	80,739	(100.0)
Utah	2,079	(61.5)	805	(23.8)	225	(6.7)	161	(4.8)	95	(2.8)	0	(0.0)	16	(0.5)	3,381	(100.0)
Vermont	1,141	(65.3)	370	(21.2)	166	(9.5)	62	(3.5)	4	(0.2)	4	(0.2)	1	(0.1)	1,748	(100.0)
Virginia [¶]	17,758	(64.9)	5,617	(20.5)	2,899	(10.6)	577	(2.1)	230	(0.8)	58	(0.2)	215	(0.8)	27,354	(100.0)
Washington [¶]	13,954	(54.7)	5,177	(20.3)	2,640	(10.3)	1,828	(7.2)	1,311	(5.1)	548	(2.1)	65	(0.3)	25,523	(100.0)
West Virginia ^{***}	1,050	(42.0)	727	(29.1)	397	(15.9)	232	(9.3)	85	(3.4)	2	(0.1)	5	(0.2)	2,498	(100.0)
Wisconsin ^{††,¶¶}	5,363	(50.1)	2,375	(22.2)	1,404	(13.1)	799	(7.5)	589	(5.5)	171	(1.6)	2	(0.0)	10,703	(100.0)
Wyoming ^{***}	54	(49.1)	41	(37.3)	11	(10.0)	1	(0.9)	0	(0.0)	0	(0.0)	3	(2.7)	110	(100.0)
Total	378,174	(57.0)	133,032	(20.1)	66,755	(10.1)	40,663	(6.1)	28,431	(4.3)	9,643	(1.5)	6,774	(1.0)	663,472	(100.0)

* Data for legal abortions obtained at ≤8 weeks of gestation are presented in Table 7 by ≤6, 7, and 8 weeks of gestation.

† Data from 41 states, the District of Columbia, and New York City; excludes two states where weeks of gestation was reported as unknown for >15% of women.

§ Percentages might not add to 100.0 because of rounding.

¶ Weeks of gestation based on physicians' estimates.

** Numbers obtained at ≤12 weeks of gestation redistributed.

†† Includes residents only.

§§ Weeks of gestation based on date of last menstrual period only if physicians' estimates were unknown.

¶¶ Weeks of gestation based on physicians' estimates only if date of last menstrual period was unknown or unreliable.

*** Weeks of gestation based on physicians' estimates only if date of last menstrual period was unknown.

TABLE 7. Reported legal abortions obtained at ≤8 weeks of gestation, by known weeks of gestation and state of occurrence—selected states,* United States, 1999

State	Weeks of gestation						Total obtained at ≤8 weeks of gestation	
	≤6		7		8		No.	(%)†
	No.	(%)	No.	(%)	No.	(%)		
Alabama	1,786	(13.5)	2,606	(19.6)	2,901	(21.9)	7,293	(54.9)
Arizona§	952	(8.8)	2,264	(21.0)	2,241	(20.8)	5,457	(50.7)
Arkansas	1,490	(25.9)	876	(15.2)	826	(14.4)	3,192	(55.5)
Colorado	771	(15.4)	776	(15.5)	872	(17.4)	2,419	(48.2)
Delaware§,¶	678	(20.1)	522	(15.5)	603	(17.9)	1,803	(53.6)
Dist. Of Columbia**	471	(6.4)	655	(8.9)	2,293	(31.1)	3,419	(46.4)
Georgia§	3,678	(11.1)	6,393	(19.3)	6,022	(18.2)	16,093	(48.6)
Hawaii§	268	(6.1)	798	(18.1)	1,079	(24.5)	2,145	(48.7)
Idaho	154	(17.8)	135	(15.6)	198	(22.8)	487	(56.2)
Indiana§	3,086	(25.5)	2,199	(18.2)	2,195	(18.1)	7,480	(61.8)
Iowa¶	2,318	(38.0)	960	(15.7)	860	(14.1)	4,138	(67.8)
Kansas§	3,734	(30.1)	2,168	(17.5)	1,528	(12.3)	7,430	(59.9)
Kentucky	603	(11.0)	1,145	(20.9)	885	(16.2)	2,633	(48.1)
Louisiana§	1,336	(11.1)	1,748	(14.6)	2,475	(20.6)	5,559	(46.3)
Maine††	305	(12.6)	517	(21.3)	605	(24.9)	1,427	(58.8)
Maryland§	4,786	(42.9)	1,421	(12.7)	1,766	(15.8)	7,973	(71.4)
Michigan	6,529	(24.9)	4,448	(17.0)	4,415	(16.8)	15,392	(58.7)
Minnesota§	2,844	(19.8)	3,443	(24.0)	2,277	(15.9)	8,564	(59.7)
Mississippi	689	(17.8)	699	(18.0)	646	(16.7)	2,034	(52.4)
Missouri§§	1,695	(20.9)	1,579	(19.5)	1,276	(15.7)	4,550	(56.1)
Montana§	385	(15.4)	431	(17.2)	408	(16.3)	1,224	(49.0)
Nevada	855	(14.7)	1,296	(22.3)	1,147	(19.8)	3,298	(56.8)
New Jersey	7,400	(21.1)	5,099	(14.5)	6,338	(18.0)	18,837	(53.6)
New Mexico§§	947	(18.6)	954	(18.7)	786	(15.4)	2,687	(52.7)
New York City	26,316	(25.7)	17,799	(17.4)	18,147	(17.7)	62,262	(60.8)
North Carolina	13,349	(41.6)	4,159	(13.0)	3,622	(11.3)	21,130	(65.9)
North Dakota§	236	(17.5)	332	(24.7)	226	(16.8)	794	(59.0)
Ohio§	6,309	(17.0)	6,242	(16.9)	6,661	(18.0)	19,212	(51.9)
Oregon§	1,894	(13.4)	2,559	(18.1)	2,421	(17.1)	6,874	(48.6)
Pennsylvania	6,215	(18.0)	5,602	(16.2)	6,215	(18.0)	18,032	(52.3)
Rhode Island	1,443	(28.8)	968	(19.3)	818	(16.3)	3,229	(64.5)
South Carolina	1,760	(22.9)	1,229	(16.0)	1,630	(21.2)	4,619	(60.1)
South Dakota	68	(9.2)	121	(16.4)	165	(22.3)	354	(47.8)
Tennessee§	2,064	(12.2)	3,508	(20.7)	4,271	(25.2)	9,843	(58.2)
Texas§	18,332	(22.7)	14,149	(17.5)	14,718	(18.2)	47,199	(58.5)
Utah	913	(27.0)	633	(18.7)	533	(15.8)	2,079	(61.5)
Vermont	428	(24.5)	407	(23.3)	306	(17.5)	1,141	(65.3)
Virginia§	6,677	(24.4)	5,411	(19.8)	5,670	(20.7)	17,758	(64.9)
Washington§	4,714	(18.5)	4,647	(18.2)	4,593	(18.0)	13,954	(54.7)
West Virginia¶¶	290	(11.6)	367	(14.7)	393	(15.7)	1,050	(42.0)
Wyoming¶¶¶	19	(17.3)	12	(10.9)	23	(20.9)	54	(49.1)
Total	138,787	(21.7)	111,277	(17.4)	115,054	(18.0)	365,118	(57.1)

* Data from 39 states, the District of Columbia, and New York City; excludes two states where weeks of gestation was reported as unknown for >15% of women, and two states that were included in Table 6 but did not provide component weeks of gestation for abortions obtained at ≤8 weeks.

† Percentages might not add to total percentage obtained at ≤8 weeks because of rounding.

§ Weeks of gestation based on physicians' estimates.

¶ Includes residents only.

** Numbers obtained at ≤12 weeks of gestation redistributed.

†† Weeks of gestation based on date of last menstrual period only if physicians' estimates were unknown.

§§ Weeks of gestation based on physicians' estimates only if date of last menstrual period was unknown or unreliable.

¶¶ Weeks of gestation based on physicians' estimates only if date of last menstrual period was unknown.

TABLE 8. Reported legal abortions, by type of procedure and state of occurrence—selected states,* United States, 1999

State	Procedure															
	Suction curettage & dilation and evacuation		Sharp curettage		All curettage		Intrauterine instillation		Medical		Other [†]		Unknown		Total	
	No.	(%)	No.	(%)	No.	(%) [§]	No.	(%)	No.	(%)	No.	(%)	No.	(%)	No.	(%) [§]
Alabama	13,164	(99.2)	40	(0.3)	13,204	(99.5)	12	(0.1)	0	(0.0)	45	(0.3)	12	(0.1)	13,273	(100.0)
Arkansas	5,745	(99.8)	3	(0.1)	5,748	(99.9)	4	(0.1)	1	(0.0)	2	(0.0)	0	(0.0)	5,755	(100.0)
Colorado	4,171	(83.1)	0	(0.0)	4,171	(83.1)	12	(0.2)	0	(0.0)	568	(11.3)	266	(5.3)	5,017	(100.0)
Connecticut	12,800	(98.8)	134	(1.0)	12,934	(99.8)	2	(0.0)	0	(0.0)	22	(0.2)	0	(0.0)	12,958	(100.0)
Delaware [¶]	3,338	(99.2)	8	(0.2)	3,346	(99.4)	7	(0.2)	9	(0.3)	3	(0.1)	1	(0.0)	3,366	(100.0)
Dist. of Columbia	4,678	(63.4)	2,602	(35.3)	7,280	(98.7)	12	(0.2)	4	(0.1)	0	(0.0)	77	(1.0)	7,373	(100.0)
Georgia	32,983	(99.7)	8	(0.0)	32,991	(99.7)	21	(0.1)	0	(0.0)	83	(0.2)	0	(0.0)	33,095	(100.0)
Hawaii	4,340	(98.5)	40	(0.9)	4,380	(99.5)	7	(0.2)	0	(0.0)	8	(0.2)	9	(0.2)	4,404	(100.0)
Idaho	853	(98.4)	1	(0.1)	854	(98.5)	4	(0.5)	0	(0.0)	8	(0.9)	1	(0.1)	867	(100.0)
Indiana	11,835	(97.7)	35	(0.3)	11,870	(98.0)	1	(0.0)	0	(0.0)	101	(0.8)	137	(1.1)	12,109	(100.0)
Kansas	11,553	(93.2)	2	(0.0)	11,555	(93.2)	3	(0.0)	289	(2.3)	548	(4.4)	0	(0.0)	12,395	(100.0)
Kentucky	5,442	(99.5)	2	(0.0)	5,444	(99.5)	1	(0.0)	1	(0.0)	0	(0.0)	23	(0.4)	5,469	(100.0)
Louisiana	11,765	(98.0)	52	(0.4)	11,817	(98.4)	1	(0.0)	0	(0.0)	14	(0.1)	176	(1.5)	12,008	(100.0)
Maine	2,348	(96.7)	9	(0.4)	2,357	(97.1)	0	(0.0)	6	(0.2)	5	(0.2)	59	(2.4)	2,427	(100.0)
Maryland	10,916	(97.8)	71	(0.6)	10,987	(98.4)	5	(0.0)	0	(0.0)	172	(1.5)	0	(0.0)	11,164	(100.0)
Massachusetts	24,409	(90.9)	120	(0.4)	24,529	(91.3)	381	(1.4)	—	**	1,942 ^{††}	(7.2)	0	(0.0)	26,852	(100.0)
Michigan	24,493	(93.5)	1,123	(4.3)	25,616	(97.7)	47	(0.2)	290	(1.1)	22	(0.1)	232	(0.9)	26,207	(100.0)
Minnesota	14,229	(99.2)	12	(0.1)	14,241	(99.3)	1	(0.0)	—	**	16 ^{††}	(0.1)	3	(0.0)	14,342	(100.0)
Mississippi	3,847	(99.2)	0	(0.0)	3,847	(99.2)	18	(0.5)	2	(0.1)	11	(0.3)	0	(0.0)	3,878	(100.0)
Missouri	8,093	(99.8)	4	(0.0)	8,097	(99.8)	1	(0.0)	13	(0.2)	2	(0.0)	0	(0.0)	8,113	(100.0)
Montana	2,484	(99.4)	4	(0.2)	2,488	(99.6)	1	(0.0)	7	(0.3)	3	(0.1)	0	(0.0)	2,499	(100.0)
Nebraska	4,541	(99.5)	0	(0.0)	4,541	(99.5)	0	(0.0)	23	(0.5)	1	(0.0)	0	(0.0)	4,565	(100.0)
Nevada	5,793	(99.8)	1	(0.0)	5,794	(99.8)	1	(0.0)	0	(0.0)	12	(0.2)	0	(0.0)	5,807	(100.0)
New Jersey ^{§§}	31,309	(97.4)	507	(1.6)	31,816	(99.0)	116	(0.4)	25	(0.1)	13	(0.0)	165	(0.5)	32,135	(100.0)
New Mexico	4,522	(88.7)	383	(7.5)	4,905	(96.2)	0	(0.0)	191	(3.7)	0	(0.0)	2	(0.0)	5,098	(100.0)
New York	126,065	(91.9)	7,195	(5.2)	133,260	(97.1)	618	(0.5)	1,300	(0.9)	310	(0.2)	1,746	(1.3)	137,234	(100.0)
City	93,588	(91.5)	6,506	(6.4)	100,094	(97.8)	482	(0.5)	669	(0.7)	97	(0.1)	992	(1.0)	102,334	(100.0)
State	32,477	(93.1)	689	(2.0)	33,166	(95.0)	136	(0.4)	631	(1.8)	213	(0.6)	754	(2.2)	34,900	(100.0)
North Carolina	31,657	(98.7)	43	(0.1)	31,700	(98.8)	50	(0.2)	290	(0.9)	41	(0.1)	0	(0.0)	32,081	(100.0)
North Dakota	1,343	(99.9)	1	(0.1)	1,344	(99.9)	0	(0.0)	0	(0.0)	0	(0.0)	1	(0.1)	1,345	(100.0)
Ohio	37,013	(96.3)	791	(2.1)	37,804	(98.3)	36	(0.1)	62	(0.2)	506	(1.3)	43	(0.1)	38,451 ^{¶¶}	(100.0)
Oregon	13,929	(98.5)	21	(0.1)	13,950	(98.6)	62	(0.4)	82	(0.6)	46	(0.3)	5	(0.0)	14,145	(100.0)
Pennsylvania	33,381	(96.8)	4	(0.0)	33,385	(96.8)	56	(0.2)	832	(2.4)	221	(0.6)	0	(0.0)	34,494	(100.0)
Rhode Island	4,984	(99.6)	8	(0.2)	4,992	(99.8)	6	(0.1)	4	(0.1)	0	(0.0)	2	(0.0)	5,004	(100.0)
South Carolina	7,652	(99.5)	2	(0.0)	7,654	(99.6)	19	(0.2)	0	(0.0)	14	(0.2)	0	(0.0)	7,687	(100.0)
South Dakota	44	(5.9)	696	(94.1)	740	(100.0)	0	(0.0)	0	(0.0)	0	(0.0)	0	(0.0)	740	(100.0)
Tennessee	16,680	(98.6)	8	(0.0)	16,688	(98.6)	51	(0.3)	0	(0.0)	8	(0.0)	177	(1.0)	16,924	(100.0)
Texas	78,683	(97.5)	65	(0.1)	78,748	(97.5)	44	(0.1)	1,381	(1.7)	63	(0.1)	503	(0.6)	80,739	(100.0)
Utah	3,368	(99.6)	12	(0.4)	3,380	(100.0)	0	(0.0)	1	(0.0)	0	(0.0)	0	(0.0)	3,381	(100.0)
Vermont	1,654	(94.6)	0	(0.0)	1,654	(94.6)	1	(0.1)	92	(5.3)	0	(0.0)	1	(0.1)	1,748	(100.0)
Virginia	25,050	(91.6)	1,276	(4.7)	26,326	(96.2)	29	(0.1)	777	(2.8)	113	(0.4)	109	(0.4)	27,354	(100.0)
Washington	24,958	(97.8)	15	(0.1)	24,973	(97.8)	29	(0.1)	515	(2.0)	0	(0.0)	6	(0.0)	25,523	(100.0)
Wyoming	89	(80.9)	20	(18.2)	109	(99.1)	0	(0.0)	0	(0.0)	0	(0.0)	1	(0.9)	110	(100.0)
Total	666,201	(95.4)	15,318	(2.2)	681,519	(97.6)	1,659	(0.2)	6,278	(0.9)	4,923	(0.7)	3,757	(0.5)	698,136	(100.0)

* Data from 40 states, the District of Columbia, and New York City; excludes one state where type of procedure was reported as unknown or as multiple types for >15% of women.

[†] Includes hysterotomy/hysterectomy and procedures reported as "other."[§] Percentages might not add to total because of rounding.[¶] Includes residents only.^{**} Medical procedures included with "other."^{††} Includes medical (nonsurgical) procedures; no separate numbers provided.^{§§} Numbers do not include private physicians' procedures.^{¶¶} Does not add to total abortions reported because of some reported combination procedures.

— Not available.

TABLE 9. Reported legal abortions, by race of women who obtained an abortion and state of occurrence—selected states,* United States, 1999

State	Race									
	White		Black		Other		Unknown		Total	
	No.	(%)	No.	(%)	No.	(%)	No.	(%)	No.	(%) [†]
Alabama	6,436	(48.5)	6,610	(49.8)	206	(1.6)	21	(0.2)	13,273	(100.0)
Arkansas	3,444	(59.8)	2,125	(36.9)	145	(2.5)	41	(0.7)	5,755	(100.0)
Colorado	3,806	(75.9)	243	(4.8)	299	(6.0)	669	(13.3)	5,017	(100.0)
Delaware [§]	1,858	(55.2)	1,388	(41.2)	120	(3.6)	0	(0.0)	3,366	(100.0)
Dist. of Columbia	639	(8.7)	5,899	(80.0)	650	(8.8)	185	(2.5)	7,373	(100.0)
Georgia	14,055	(42.5)	17,938	(54.2)	1,102	(3.3)	0	(0.0)	33,095	(100.0)
Hawaii	1,104	(25.1)	132	(3.0)	2,723	(61.8)	445	(10.1)	4,404	(100.0)
Idaho	811	(93.5)	10	(1.2)	42	(4.8)	4	(0.5)	867	(100.0)
Indiana	7,160	(59.1)	3,316	(27.4)	255	(2.1)	1,378	(11.4)	12,109	(100.0)
Iowa [§]	4,922	(80.6)	383	(6.3)	674	(11.0)	127	(2.1)	6,106	(100.0)
Kansas	9,020	(72.8)	2,666	(21.5)	671	(5.4)	38	(0.3)	12,395	(100.0)
Kentucky	3,928	(71.8)	1,180	(21.6)	243	(4.4)	118	(2.2)	5,469	(100.0)
Louisiana	4,927	(41.0)	6,176	(51.4)	180	(1.5)	725	(6.0)	12,008	(100.0)
Maine	2,206	(90.9)	24	(1.0)	90	(3.7)	107	(4.4)	2,427	(100.0)
Maryland	3,860	(34.6)	6,290	(56.3)	865	(7.7)	149	(1.3)	11,164	(100.0)
Minnesota	9,611	(67.0)	2,425	(16.9)	1,892	(13.2)	414	(2.9)	14,342	(100.0)
Mississippi	1,060	(27.3)	2,754	(71.0)	56	(1.4)	8	(0.2)	3,878	(100.0)
Missouri	4,745	(58.5)	2,998	(37.0)	343	(4.2)	27	(0.3)	8,113	(100.0)
Montana	2,172	(86.9)	10	(0.4)	226	(9.0)	91	(3.6)	2,499	(100.0)
New Jersey	12,317	(35.1)	15,612	(44.4)	6,052	(17.2)	1,145	(3.3)	35,126	(100.0)
New Mexico	4,305	(84.4)	153	(3.0)	640	(12.6)	0	(0.0)	5,098	(100.0)
New York City	43,234	(42.2)	49,314	(48.2)	5,800	(5.7)	3,986	(3.9)	102,334	(100.0)
North Carolina	15,307	(47.7)	13,593	(42.4)	2,486	(7.7)	695	(2.2)	32,081	(100.0)
North Dakota	1,170	(87.0)	30	(2.2)	142	(10.6)	3	(0.2)	1,345	(100.0)
Ohio	22,143	(59.8)	12,680	(34.2)	790	(2.1)	1,428	(3.9)	37,041	(100.0)
Oregon	11,983	(84.7)	807	(5.7)	768	(5.4)	587	(4.1)	14,145	(100.0)
Pennsylvania	18,602	(53.9)	14,710	(42.6)	1,140	(3.3)	42	(0.1)	34,494	(100.0)
Rhode Island	3,902	(78.0)	724	(14.5)	288	(5.8)	90	(1.8)	5,004	(100.0)
South Carolina	4,238	(55.1)	3,277	(42.6)	172	(2.2)	0	(0.0)	7,687	(100.0)
South Dakota	599	(80.9)	29	(3.9)	104	(14.1)	8	(1.1)	740	(100.0)
Tennessee	9,131	(54.0)	7,226	(42.7)	511	(3.0)	56	(0.3)	16,924	(100.0)
Texas	57,301	(71.0)	16,414	(20.3)	3,711	(4.6)	3,313	(4.1)	80,739	(100.0)
Utah	2,676	(79.1)	91	(2.7)	339	(10.0)	275	(8.1)	3,381	(100.0)
Vermont	1,691	(96.7)	20	(1.1)	36	(2.1)	1	(0.1)	1,748	(100.0)
Virginia	13,597	(49.7)	10,797	(39.5)	2,050	(7.5)	910	(3.3)	27,354	(100.0)
West Virginia	2,191	(87.7)	262	(10.5)	45	(1.8)	0	(0.0)	2,498	(100.0)
Wisconsin [§]	7,457	(69.7)	2,553	(23.9)	664	(6.2)	29	(0.3)	10,703	(100.0)
Total	317,608	(54.6)	210,859	(36.2)	36,520	(6.3)	17,115	(2.9)	582,102	(100.0)
Ratio [¶]	177		529		367				245	
Rate ^{**}	10		31		26				14	

* Data from 35 states, the District of Columbia, and New York City; excludes six states where race was reported as unknown for >15% of women.

† Percentages might not add to 100.0 because of rounding.

§ Includes residents only.

¶ Calculated as the number of legal abortions obtained by women of a given race per 1,000 live births to women of the same race for these states. For each state, data for women of unknown race were distributed according to the known racial distribution for that state.

** Calculated as the number of legal abortions obtained by women of a given race per 1,000 women aged 15–44 years of the same race for these states. For each state, data for women of unknown race were distributed according to the known racial distribution for that state. Rates exclude New York City because population data were not available separately from New York State.

TABLE 10. Reported legal abortions, by ethnicity of women who obtained an abortion and state of occurrence—selected states,* United States, 1999

State	Ethnicity						Total	
	Hispanic		Non-Hispanic		Unknown		No.	(%) [†]
	No.	(%)	No.	(%)	No.	(%)		
Alabama	216	(1.6)	13,033	(98.2)	24	(0.2)	13,273	(100.0)
Arkansas	109	(1.9)	5,588	(97.1)	58	(1.0)	5,755	(100.0)
Colorado	577	(11.5)	4,420	(88.1)	20	(0.4)	5,017	(100.0)
Delaware [§]	186	(5.5)	3,174	(94.3)	6	(0.2)	3,366	(100.0)
Dist. of Columbia	531	(7.2)	6,513	(88.3)	329	(4.5)	7,373	(100.0)
Georgia	1,110	(3.4)	30,867	(93.3)	1,118	(3.4)	33,095	(100.0)
Idaho	82	(9.5)	784	(90.4)	1	(0.1)	867	(100.0)
Kansas	801	(6.5)	11,084	(89.4)	510	(4.1)	12,395	(100.0)
Kentucky	10	(0.2)	5,341	(97.7)	118	(2.2)	5,469	(100.0)
Maine	16	(0.7)	2,136	(88.0)	275	(11.3)	2,427	(100.0)
Minnesota	612	(4.3)	13,339	(93.0)	391	(2.7)	14,342	(100.0)
Mississippi	15	(0.4)	3,852	(99.3)	11	(0.3)	3,878	(100.0)
Missouri	166	(2.0)	7,471	(92.1)	476	(5.9)	8,113	(100.0)
New Jersey	6,051	(17.2)	28,352	(80.7)	723	(2.1)	35,126	(100.0)
New Mexico	2,365	(46.4)	2,733	(53.6)	0	(0.0)	5,098	(100.0)
New York City	32,826	(32.1)	65,047	(63.6)	4,461	(4.4)	102,334	(100.0)
Ohio	832	(2.2)	35,935	(97.0)	274	(0.7)	37,041	(100.0)
Oregon	1,221	(8.6)	12,896	(91.2)	28	(0.2)	14,145	(100.0)
Pennsylvania	1,409	(4.1)	33,055	(95.8)	30	(0.1)	34,494	(100.0)
South Carolina	196	(2.5)	7,483	(97.3)	8	(0.1)	7,687	(100.0)
South Dakota	25	(3.4)	693	(93.6)	22	(3.0)	740	(100.0)
Tennessee	297	(1.8)	16,244	(96.0)	383	(2.3)	16,924	(100.0)
Texas	27,514	(34.1)	49,912	(61.8)	3,313	(4.1)	80,739	(100.0)
Utah	463	(13.7)	2,885	(85.3)	33	(1.0)	3,381	(100.0)
Vermont	20	(1.1)	1,725	(98.7)	3	(0.2)	1,748	(100.0)
Wisconsin [§]	633	(5.9)	10,070	(94.1)	0	(0.0)	10,703	(100.0)
Total	78,283	(16.8)	374,632	(80.5)	12,615	(2.7)	465,530	(100.0)
Abortion ratio [¶]	261		252				254	
Abortion rate ^{**}	19		14				14	

* Data from 24 states, the District of Columbia, and New York City; excludes 13 states where ethnicity was reported as unknown for >15% of women.

† Percentages might not add to 100.0 because of rounding.

§ Includes residents only.

¶ Calculated as the number of legal abortions obtained by women of a given ethnicity per 1,000 live births to women of the same ethnicity for these states. For each state, data for women of unknown ethnicity were distributed according to the known ethnicity distribution for that state.

** Calculated as the number of legal abortions obtained by women of a given ethnicity per 1,000 women of the same ethnicity for these states. For each state, data for women of unknown ethnicity were distributed according to the known ethnicity distribution for that state. Rates exclude New York City because population data were not available separately from New York State.

TABLE 11. Reported legal abortions, by marital status of women who obtained an abortion and state of occurrence—selected states,* United States, 1999

State	Marital status						Total	
	Married†		Unmarried§		Unknown			
	No.	(%)	No.	(%)	No.	(%)	No.	(%)¶
Alabama	2,057	(15.5)	11,139	(83.9)	77	(0.6)	13,273	(100.0)
Arkansas	1,000	(17.4)	4,615	(80.2)	140	(2.4)	5,755	(100.0)
Colorado	1,101	(21.9)	3,870	(77.1)	46	(0.9)	5,017	(100.0)
Delaware**	545	(16.2)	2,821	(83.8)	0	(0.0)	3,366	(100.0)
Georgia	6,135	(18.5)	26,960	(81.5)	0	(0.0)	33,095	(100.0)
Hawaii	860	(19.5)	3,532	(80.2)	12	(0.3)	4,404	(100.0)
Idaho	218	(25.1)	648	(74.7)	1	(0.1)	867	(100.0)
Illinois††	7,306	(15.9)	36,341	(79.1)	2,277	(5.0)	45,924	(100.0)
Indiana	1,715	(14.2)	8,709	(71.9)	1,685	(13.9)	12,109	(100.0)
Iowa**	1,355	(22.2)	4,614	(75.6)	137	(2.2)	6,106	(100.0)
Kansas	2,466	(19.9)	9,901	(79.9)	28	(0.2)	12,395	(100.0)
Kentucky	824	(15.1)	4,559	(83.4)	86	(1.6)	5,469	(100.0)
Maryland	1,878	(16.8)	8,877	(79.5)	409	(3.7)	11,164	(100.0)
Massachusetts	6,998	(26.1)	17,637	(65.7)	2,217	(8.3)	26,852	(100.0)
Michigan	3,957	(15.1)	21,995	(83.9)	255	(1.0)	26,207	(100.0)
Minnesota	2,774	(19.3)	10,586	(73.8)	982	(6.8)	14,342	(100.0)
Mississippi	557	(14.4)	3,313	(85.4)	8	(0.2)	3,878	(100.0)
Missouri	1,664	(20.5)	6,338	(78.1)	111	(1.4)	8,113	(100.0)
Nevada	1,288	(22.2)	4,309	(74.2)	210	(3.6)	5,807	(100.0)
New Jersey	6,261	(17.8)	28,733	(81.8)	132	(0.4)	35,126	(100.0)
New Mexico	827	(16.2)	4,184	(82.1)	87	(1.7)	5,098	(100.0)
New York City	18,284	(17.9)	81,118	(79.3)	2,932	(2.9)	102,334	(100.0)
North Carolina	6,761	(21.1)	23,792	(74.2)	1,528	(4.8)	32,081	(100.0)
North Dakota	252	(18.7)	1,085	(80.7)	8	(0.6)	1,345	(100.0)
Ohio	6,262	(16.9)	29,395	(79.4)	1,384	(3.7)	37,041	(100.0)
Oregon	3,204	(22.7)	10,672	(75.4)	269	(1.9)	14,145	(100.0)
Pennsylvania	5,710	(16.6)	28,772	(83.4)	12	(0.0)	34,494	(100.0)
Rhode Island	839	(16.8)	3,583	(71.6)	582	(11.6)	5,004	(100.0)
South Carolina	1,326	(17.2)	6,360	(82.7)	1	(0.0)	7,687	(100.0)
South Dakota	141	(19.1)	599	(80.9)	0	(0.0)	740	(100.0)
Tennessee	3,047	(18.0)	13,654	(80.7)	223	(1.3)	16,924	(100.0)
Texas	16,902	(20.9)	61,182	(75.8)	2,655	(3.3)	80,739	(100.0)
Utah	914	(27.0)	2,452	(72.5)	15	(0.4)	3,381	(100.0)
Vermont	348	(19.9)	1,287	(73.6)	113	(6.5)	1,748	(100.0)
Virginia	4,698	(17.2)	19,408	(71.0)	3,248	(11.9)	27,354	(100.0)
West Virginia	466	(18.7)	2,024	(81.0)	8	(0.3)	2,498	(100.0)
Wisconsin**	2,001	(18.7)	8,665	(81.0)	37	(0.3)	10,703	(100.0)
Total	122,941	(18.6)	517,729	(78.1)	21,915	(3.3)	662,585	(100.0)
Abortion ratio ^{§§}	70		604		245			

* Data from 36 states and New York City; excludes seven areas where marital status was reported as unknown for >15% of women.

† Includes married and separated.

§ Includes never married, divorced, and widowed.

¶ Percentages might not add to 100.0 because of rounding.

** Includes residents only.

†† Unpublished small numbers distributed as the known numbers using data from public use tape.

§§ Calculated as the number of legal abortions obtained by women of a given marital status per 1,000 live births to women of the same marital status for these states. For each state, data for women of unknown marital status were distributed according to the known marital status distribution for that state.

TABLE 12. Reported legal abortions, by number of previous live births and state of occurrence—selected states,* United States, 1999

State	No. previous live births													
	0		1		2		3		≥4		Unknown		Total	
	No.	(%)	No.	(%)	No.	(%)	No.	(%)	No.	(%)	No.	(%)	No.	(%)†
Alabama	5,439	(41.0)	4,119	(31.0)	2,589	(19.5)	758	(5.7)	322	(2.4)	46	(0.3)	13,273	(100.0)
Arizona	4,675	(43.4)	2,642	(24.5)	1,993	(18.5)	857	(8.0)	487	(4.5)	111	(1.0)	10,765	(100.0)
Colorado	2,050	(40.9)	1,082	(21.6)	786	(15.7)	280	(5.6)	148	(2.9)	671	(13.4)	5,017	(100.0)
Delaware [§]	1,391	(41.3)	955	(28.4)	651	(19.3)	238	(7.1)	124	(3.7)	7	(0.2)	3,366	(100.0)
Georgia	14,259	(43.1)	9,600	(29.0)	6,155	(18.6)	2,076	(6.3)	969	(2.9)	36	(0.1)	33,095	(100.0)
Hawaii	2,101	(47.7)	899	(20.4)	740	(16.8)	279	(6.3)	170	(3.9)	215	(4.9)	4,404	(100.0)
Idaho	393	(45.3)	219	(25.3)	165	(19.0)	60	(6.9)	29	(3.3)	1	(0.1)	867	(100.0)
Indiana [¶]	4,184	(34.6)	3,333	(27.5)	2,517	(20.8)	921	(7.6)	400	(3.3)	754	(6.2)	12,109	(100.0)
Iowa [§]	2,826	(46.3)	1,432	(23.5)	1,124	(18.4)	466	(7.6)	193	(3.2)	65	(1.1)	6,106	(100.0)
Kansas	5,377	(43.4)	3,204	(25.8)	2,333	(18.8)	967	(7.8)	514	(4.1)	0	(0.0)	12,395	(100.0)
Kentucky	2,198	(40.2)	1,718	(31.4)	1,064	(19.5)	356	(6.5)	126	(2.3)	7	(0.1)	5,469	(100.0)
Louisiana	5,071	(42.2)	3,292	(27.4)	2,050	(17.1)	707	(5.9)	386	(3.2)	502	(4.2)	12,008	(100.0)
Maine	1,313	(54.1)	521	(21.5)	395	(16.3)	137	(5.6)	52	(2.1)	9	(0.4)	2,427	(100.0)
Maryland	4,373	(39.2)	3,351	(30.0)	2,232	(20.0)	817	(7.3)	391	(3.5)	0	(0.0)	11,164	(100.0)
Michigan	11,255	(42.9)	6,600	(25.2)	5,107	(19.5)	2,157	(8.2)	1,069	(4.1)	19	(0.1)	26,207	(100.0)
Minnesota	6,153	(42.9)	3,321	(23.2)	2,730	(19.0)	1,144	(8.0)	939	(6.5)	55	(0.4)	14,342	(100.0)
Mississippi	1,361	(35.1)	1,263	(32.6)	824	(21.2)	298	(7.7)	131	(3.4)	1	(0.0)	3,878	(100.0)
Missouri	3,087	(38.1)	2,244	(27.7)	1,723	(21.2)	672	(8.3)	384	(4.7)	3	(0.0)	8,113	(100.0)
Montana	1,290	(51.6)	548	(21.9)	429	(17.2)	157	(6.3)	74	(3.0)	1	(0.0)	2,499	(100.0)
Nebraska	2,097	(45.9)	1,075	(23.5)	817	(17.9)	381	(8.3)	195	(4.3)	0	(0.0)	4,565	(100.0)
Nevada	2,048	(35.3)	1,390	(23.9)	1,037	(17.9)	425	(7.3)	197	(3.4)	710	(12.2)	5,807	(100.0)
New Jersey	11,921	(33.9)	10,260	(29.2)	7,398	(21.1)	2,854	(8.1)	1,327	(3.8)	1,366	(3.9)	35,126	(100.0)
New Mexico	1,981	(38.9)	1,420	(27.9)	952	(18.7)	440	(8.6)	305	(6.0)	0	(0.0)	5,098	(100.0)
New York	49,353	(36.0)	36,486	(26.6)	27,251	(19.9)	11,536	(8.4)	6,955	(5.1)	5,653	(4.1)	137,234	(100.0)
City	35,088	(34.3)	29,544	(28.9)	21,926	(21.4)	9,273	(9.1)	5,774	(5.6)	729	(0.7)	102,334	(100.0)
State	14,265	(40.9)	6,942	(19.9)	5,325	(15.3)	2,263	(6.5)	1,181	(3.4)	4,924	(14.1)	34,900	(100.0)
North Carolina	12,281	(38.3)	7,904	(24.6)	5,032	(15.7)	1,870	(5.8)	965	(3.0)	4,029	(12.6)	32,081	(100.0)
North Dakota	638	(47.4)	318	(23.6)	255	(19.0)	93	(6.9)	39	(2.9)	2	(0.1)	1,345	(100.0)
Ohio	11,480	(31.0)	10,650	(28.8)	7,614	(20.6)	2,920	(7.9)	1,496	(4.0)	2,881	(7.8)	37,041	(100.0)
Oregon	6,364	(45.0)	3,679	(26.0)	2,567	(18.1)	946	(6.7)	513	(3.6)	76	(0.5)	14,145	(100.0)
Pennsylvania	14,057	(40.8)	9,545	(27.7)	6,772	(19.6)	2,668	(7.7)	1,451	(4.2)	1	(0.0)	34,494	(100.0)
Rhode Island [¶]	2,251	(45.0)	1,347	(26.9)	927	(18.5)	307	(6.1)	160	(3.2)	12	(0.2)	5,004	(100.0)
South Carolina	3,380	(44.0)	2,221	(28.9)	1,442	(18.8)	453	(5.9)	188	(2.4)	3	(0.0)	7,687	(100.0)
South Dakota	359	(48.5)	171	(23.1)	124	(16.8)	54	(7.3)	30	(4.1)	2	(0.3)	740	(100.0)
Tennessee	6,481	(38.3)	5,323	(31.5)	3,276	(19.4)	1,140	(6.7)	574	(3.4)	130	(0.8)	16,924	(100.0)
Texas	32,976	(40.8)	22,420	(27.8)	16,011	(19.8)	6,241	(7.7)	2,913	(3.6)	178	(0.2)	80,739	(100.0)
Utah	1,369	(40.5)	846	(25.0)	735	(21.7)	292	(8.6)	135	(4.0)	4	(0.1)	3,381	(100.0)
Vermont	981	(56.1)	342	(19.6)	295	(16.9)	96	(5.5)	33	(1.9)	1	(0.1)	1,748	(100.0)
Virginia	11,541	(42.2)	7,478	(27.3)	5,102	(18.7)	1,659	(6.1)	758	(2.8)	816	(3.0)	27,354	(100.0)
Washington	11,609	(45.5)	6,507	(25.5)	4,642	(18.2)	1,828	(7.2)	873	(3.4)	64	(0.3)	25,523	(100.0)
West Virginia	797	(31.9)	745	(29.8)	556	(22.3)	225	(9.0)	175	(7.0)	0	(0.0)	2,498	(100.0)
Wyoming	48	(43.6)	22	(20.0)	27	(24.5)	10	(9.1)	3	(2.7)	0	(0.0)	110	(100.0)
Total	262,808	(39.5)	180,492	(27.1)	128,439	(19.3)	49,785	(7.5)	26,193	(3.9)	18,431	(2.8)	666,148	(100.0)
Ratio**	243		206		290		298		242				242	

* Data from 40 states and New York City; excludes two states where number of previous live births was reported as unknown for >15% of women.

† Percentages might not add to 100.0 because of rounding.

§ Includes residents only.

¶ Indicates number of living children.

** Calculated as the number of legal abortions obtained by women with a given number of previous live births per 1,000 live births to women with the same number of previous live births for these states. For each state, data for women whose number of previous live births was unknown were distributed according to the known number of previous live births for that state.

TABLE 13. Reported legal abortions, by number of previous legal induced abortions and state of occurrence—selected states,* United States, 1999

State	No. previous induced abortions											
	0		1		2		≥3		Unknown		Total	
	No.	(%)	No.	(%)	No.	(%)	No.	(%)	No.	(%)	No.	(%)†
Alabama	8,613	(64.9)	3,279	(24.7)	965	(7.3)	366	(2.8)	50	(0.4)	13,273	(100.0)
Arizona	6,717	(62.4)	2,611	(24.3)	893	(8.3)	382	(3.5)	162	(1.5)	10,765	(100.0)
Delaware§	1,881	(55.9)	964	(28.6)	318	(9.4)	186	(5.5)	17	(0.5)	3,366	(100.0)
Georgia	19,309	(58.3)	9,035	(27.3)	3,087	(9.3)	1,555	(4.7)	109	(0.3)	33,095	(100.0)
Hawaii	1,715	(38.9)	1,393	(31.6)	683	(15.5)	432	(9.8)	181	(4.1)	4,404	(100.0)
Idaho	671	(77.4)	137	(15.8)	34	(3.9)	24	(2.8)	1	(0.1)	867	(100.0)
Indiana	7,200	(59.5)	3,022	(25.0)	958	(7.9)	459	(3.8)	470	(3.9)	12,109	(100.0)
Iowa§	3,819	(62.5)	1,623	(26.6)	428	(7.0)	198	(3.2)	38	(0.6)	6,106	(100.0)
Kansas	7,845	(63.3)	3,082	(24.9)	988	(8.0)	478	(3.9)	2	(0.0)	12,395	(100.0)
Kentucky	3,539	(64.7)	1,249	(22.8)	446	(8.2)	226	(4.1)	9	(0.2)	5,469	(100.0)
Maine	1,515	(62.4)	621	(25.6)	207	(8.5)	75	(3.1)	9	(0.4)	2,427	(100.0)
Maryland	2,582	(23.1)	4,167	(37.3)	2,705	(24.2)	1,710	(15.3)	0	(0.0)	11,164	(100.0)
Massachusetts	12,420	(46.3)	6,254	(23.3)	2,862	(10.7)	1,875	(7.0)	3,441	(12.8)	26,852	(100.0)
Michigan	14,236	(54.3)	6,647	(25.4)	3,136	(12.0)	2,161	(8.2)	27	(0.1)	26,207	(100.0)
Minnesota	8,446	(58.9)	3,566	(24.9)	1,457	(10.2)	869	(6.1)	4	(0.0)	14,342	(100.0)
Mississippi	2,647	(68.3)	931	(24.0)	229	(5.9)	70	(1.8)	1	(0.0)	3,878	(100.0)
Missouri	4,520	(55.7)	2,277	(28.1)	867	(10.7)	446	(5.5)	3	(0.0)	8,113	(100.0)
Montana	1,435	(57.4)	646	(25.9)	264	(10.6)	153	(6.1)	1	(0.0)	2,499	(100.0)
Nebraska	3,132	(68.6)	919	(20.1)	316	(6.9)	198	(4.3)	0	(0.0)	4,565	(100.0)
Nevada	2,955	(50.9)	1,491	(25.7)	760	(13.1)	559	(9.6)	42	(0.7)	5,807	(100.0)
New Jersey	15,162	(43.2)	9,772	(27.8)	4,753	(13.5)	3,614	(10.3)	1,825	(5.2)	35,126	(100.0)
New Mexico	3,420	(67.1)	1,060	(20.8)	347	(6.8)	174	(3.4)	97	(1.9)	5,098	(100.0)
New York	55,658	(40.6)	36,093	(26.3)	20,967	(15.3)	19,201	(14.0)	5,315	(3.9)	137,234	(100.0)
City	37,221	(36.4)	28,822	(28.2)	17,842	(17.4)	17,063	(16.7)	1,386	(1.4)	102,334	(100.0)
State	18,437	(52.8)	7,271	(20.8)	3,125	(9.0)	2,138	(6.1)	3,929	(11.3)	34,900	(100.0)
North Carolina	17,710	(55.2)	7,353	(22.9)	2,396	(7.5)	1,054	(3.3)	3,568	(11.1)	32,081	(100.0)
North Dakota	940	(69.9)	268	(19.9)	94	(7.0)	29	(2.2)	14	(1.0)	1,345	(100.0)
Ohio	15,336	(41.4)	10,338	(27.9)	3,759	(10.1)	2,238	(6.0)	5,370	(14.5)	37,041	(100.0)
Oregon	8,127	(57.5)	3,548	(25.1)	1,476	(10.4)	929	(6.6)	65	(0.5)	14,145	(100.0)
Pennsylvania	19,007	(55.1)	9,207	(26.7)	3,872	(11.2)	2,407	(7.0)	1	(0.0)	34,494	(100.0)
Rhode Island	2,891	(57.8)	1,306	(26.1)	506	(10.1)	271	(5.4)	30	(0.6)	5,004	(100.0)
South Carolina	4,856	(63.2)	1,954	(25.4)	611	(7.9)	266	(3.5)	0	(0.0)	7,687	(100.0)
South Dakota	556	(75.1)	135	(18.2)	31	(4.2)	16	(2.2)	2	(0.3)	740	(100.0)
Tennessee	10,233	(60.5)	4,327	(25.6)	1,571	(9.3)	729	(4.3)	64	(0.4)	16,924	(100.0)
Texas	48,095	(59.6)	21,738	(26.9)	7,108	(8.8)	3,564	(4.4)	234	(0.3)	80,739	(100.0)
Utah	2,188	(64.7)	763	(22.6)	252	(7.5)	178	(5.3)	0	(0.0)	3,381	(100.0)
Vermont	1,067	(61.0)	439	(25.1)	149	(8.5)	93	(5.3)	0	(0.0)	1,748	(100.0)
Virginia	14,806	(54.1)	7,889	(28.8)	2,901	(10.6)	1,395	(5.1)	363	(1.3)	27,354	(100.0)
Washington	13,974	(54.8)	6,497	(25.5)	2,899	(11.4)	2,049	(8.0)	104	(0.4)	25,523	(100.0)
West Virginia	2,023	(81.0)	350	(14.0)	75	(3.0)	50	(2.0)	0	(0.0)	2,498	(100.0)
Wyoming	79	(71.8)	24	(21.8)	4	(3.6)	3	(2.7)	0	(0.0)	110	(100.0)
Total	351,325	(52.0)	176,975	(26.2)	75,374	(11.2)	50,682	(7.5)	21,619	(3.2)	675,975	(100.0)

* Data from 39 states and New York City; excludes three areas where number of previous induced abortions was reported as unknown for >15% of women.

† Percentages might not add to 100.0 because of rounding.

§ Includes residents only.

TABLE 14. Reported legal abortions, by known race, age group, and marital status of women who obtained an abortion—selected states, United States, 1999

Characteristic	Race				Total	
	White		Black/other		No.	(%)
	No.	(%)	No.	(%)		
Age group (yrs)						
<15	1,697	(0.5)	2,107	(0.9)	3,804	(0.7)
15–19	60,202	(19.1)	40,557	(16.9)	100,759	(18.1)
20–24	101,781	(32.3)	78,168	(32.6)	179,949	(32.4)
25–29	69,755	(22.1)	60,758	(25.3)	130,513	(23.5)
30–34	43,657	(13.8)	34,482	(14.4)	78,139	(14.1)
35–39	28,297	(9.0)	18,311	(7.6)	46,608	(8.4)
≥40	10,075	(3.2)	5,407	(2.3)	15,482	(2.8)
Total*	315,464	(100.0)	239,790	(100.0)	555,254	(100.0)
Marital status						
Married	63,458	(21.2)	37,103	(16.3)	100,561	(19.1)
Unmarried	235,473	(78.8)	190,775	(83.7)	426,248	(80.9)
Total†	298,931	(100.0)	227,878	(100.0)	526,809	(100.0)

* Data from 35 states and New York City; excludes seven states where race was reported as unknown for >15% of women.

† Data from 32 states and New York City; excludes eight states where race or marital status was reported as unknown for >15% of women.

TABLE 15. Reported legal abortions, by known ethnicity, age group, and marital status of women who obtained an abortion—selected states, United States, 1999

Characteristic	Ethnicity				Total	
	Hispanic		Non-Hispanic		No.	(%)
	No.	(%)	No.	(%)		
Age group (yrs)						
<15	454	(0.6)	2,543	(0.7)	2,997	(0.7)
15–19	13,640	(17.6)	66,927	(18.2)	80,567	(18.1)
20–24	26,607	(34.4)	116,146	(31.6)	142,753	(32.1)
25–29	18,814	(24.3)	85,987	(23.4)	104,801	(23.6)
30–34	10,680	(13.8)	52,562	(14.3)	63,242	(14.2)
35–39	5,494	(7.1)	31,991	(8.7)	37,485	(8.4)
≥40	1,640	(2.1)	10,923	(3.0)	12,563	(2.8)
Total*	77,329	(100.0)	367,079	(100.0)	444,408	(100.0)
Marital status						
Married	15,806	(21.0)	66,406	(18.4)	82,212	(18.9)
Unmarried	59,524	(79.0)	293,578	(81.6)	353,102	(81.1)
Total†	75,330	(100.0)	359,984	(100.0)	435,314	(100.0)

* Data from 24 states and New York City; excludes 13 states where ethnicity was reported as unknown for >15% of women. Percentages might not add to 100.0 because of rounding.

† Data from 23 states and New York City; excludes 13 states where ethnicity or marital status was reported as unknown for >15% of women.

TABLE 16. Reported legal abortions, by known weeks of gestation, age group, race, and ethnicity of women who obtained abortions—selected states, United States, 1999

Characteristic	Weeks of gestation										Total			
	≤8		9–10		11–12		13–15		16–20				≥21	
	No.	(%)	No.	(%)	No.	(%)	No.	(%)	No.	(%)	No.	(%)	No.	(%)*
Age group (yrs)														
<15	1,695	(39.8)	924	(21.7)	563	(13.2)	457	(10.7)	387	(9.1)	235	(5.5)	4,261	(100.0)
15–19	55,421	(47.9)	25,518	(22.1)	14,930	(12.9)	9,756	(8.4)	7,272	(6.3)	2,788	(2.4)	115,685	(100.0)
20–24	114,047	(55.8)	42,409	(20.8)	22,179	(10.9)	13,631	(6.7)	9,136	(4.5)	2,948	(1.4)	204,350	(100.0)
25–29	91,390	(61.6)	28,898	(19.5)	13,498	(9.1)	7,843	(5.3)	4,944	(3.3)	1,713	(1.2)	148,286	(100.0)
30–34	56,555	(63.6)	16,749	(18.8)	7,481	(8.4)	4,215	(4.7)	2,938	(3.3)	1,053	(1.2)	88,991	(100.0)
35–39	33,991	(63.6)	9,820	(18.4)	4,412	(8.3)	2,426	(4.5)	2,169	(4.1)	640	(1.2)	53,458	(100.0)
≥40	11,630	(65.6)	3,065	(17.3)	1,295	(7.3)	743	(4.2)	769	(4.3)	221	(1.2)	17,723	(100.0)
Total†	364,729	(57.6)	127,383	(20.1)	64,358	(10.2)	39,071	(6.2)	27,615	(4.4)	9,598	(1.5)	632,754	(100.0)
Race														
White	183,375	(59.8)	60,537	(19.7)	29,672	(9.7)	16,925	(5.5)	11,927	(3.9)	4,116	(1.3)	306,552	(100.0)
Black	108,299	(54.0)	42,083	(21.0)	22,859	(11.4)	14,036	(7.0)	9,791	(4.9)	3,459	(1.7)	200,527	(100.0)
Other	22,483	(64.6)	5,993	(17.2)	2,568	(7.4)	1,745	(5.0)	1,551	(4.5)	489	(1.4)	34,829	(100.0)
Total§	314,157	(58.0)	108,613	(20.0)	55,099	(10.2)	32,706	(6.0)	23,269	(4.3)	8,064	(1.5)	541,908	(100.0)
Ethnicity														
Hispanic	44,779	(58.5)	14,908	(19.5)	7,320	(9.6)	5,029	(6.6)	3,529	(4.6)	957	(1.3)	76,522	(100.0)
Non-Hispanic	199,371	(56.0)	72,782	(20.5)	36,933	(10.4)	22,915	(6.4)	17,267	(4.9)	6,626	(1.9)	355,894	(100.0)
Total¶	244,150	(56.5)	87,690	(20.3)	44,253	(10.2)	27,944	(6.5)	20,796	(4.8)	7,583	(1.8)	432,416	(100.0)

* Percentages might not add to 100.0 because of rounding.

† Data from 40 states and New York City; excludes one state where weeks of gestation was reported as unknown for >15% of women.

§ Data from 34 states and New York City; excludes five states where weeks of gestation or race was reported as unknown for >15% of women.

¶ Data from 23 states and New York City; excludes 12 states where weeks of gestation or ethnicity was reported as unknown for >15% of women.

TABLE 17. Reported legal abortions obtained at ≤8 weeks of gestation, by known weeks of gestation, age group, race, and ethnicity of women who obtained abortions—selected states, United States, 1999

Characteristic	Weeks of gestation						Total	
	≤6		7		8			
	No.	(%)*	No.	(%)*	No.	(%)*	No.	(%)*
Age group (yrs)								
<15	577	(13.8)	512	(12.2)	579	(13.8)	1,668	(39.8)
15–19	18,760	(16.5)	16,843	(14.8)	18,986	(16.7)	54,589	(48.0)
20–24	41,785	(20.8)	34,458	(17.2)	36,077	(18.0)	112,320	(56.0)
25–29	35,558	(24.4)	27,551	(18.9)	26,997	(18.5)	90,106	(61.8)
30–34	22,309	(25.5)	17,039	(19.5)	16,436	(18.8)	55,784	(63.7)
35–39	13,482	(25.7)	10,212	(19.4)	9,764	(18.6)	33,458	(63.7)
≥40	4,896	(28.1)	3,377	(19.4)	3,168	(18.2)	11,441	(65.7)
Total†	137,367	(22.1)	109,992	(17.7)	112,007	(18.0)	359,366	(57.8)
Race								
White	71,437	(23.3)	56,335	(18.4)	55,603	(18.1)	183,375	(59.8)
Black	39,891	(19.9)	32,267	(16.1)	36,141	(18.0)	108,299	(54.0)
Other	10,109	(29.0)	6,547	(18.8)	5,827	(16.7)	22,483	(64.6)
Total§	121,437	(22.4)	95,149	(17.6)	97,571	(18.0)	314,157	(58.0)
Ethnicity								
Hispanic	17,369	(22.7)	13,563	(17.7)	13,847	(18.1)	44,779	(58.5)
Non-Hispanic	71,022	(20.0)	63,463	(17.8)	64,886	(18.2)	199,371	(56.0)
Total¶	88,391	(20.4)	77,026	(17.8)	78,733	(18.2)	244,150	(56.5)

* Percentages were calculated using total number of abortions obtained at all known weeks of gestation. Percentages might not add to the percentage obtained at ≤8 weeks of gestation because fewer states are included here, or because of rounding.

† Data from 39 states and New York City; excludes one state where weeks of gestation was reported as unknown for >15% of women.

§ Data from 34 states and New York City; excludes five states where weeks of gestation or race was reported as unknown for >15% of women.

¶ Data from 23 states and New York City; excludes 12 states where weeks of gestation or ethnicity was reported as unknown for >15% of women.

TABLE 18. Reported legal abortions, by known weeks of gestation and type of procedure—selected states,* United States, 1999

Type of procedure	Weeks of gestation													
	≤8		9–10		11–12		13–15		16–20		≥21		Total	
	No.	(%)	No.	(%)	No.	(%)	No.	(%)	No.	(%)	No.	(%)	No.	(%)
Curettage (suction or sharp) [†]	348,662	(98.4)	123,187	(99.7)	61,964	(99.7)	37,990	(99.4)	25,732	(94.9)	8,152	(86.5)	605,687	(98.5)
Intrauterine saline instillation	58	(0.0) [§]	27	(0.0) [§]	14	(0.0) [§]	39	(0.1)	488	(1.8)	191	(2.0)	817	(0.1)
Intrauterine prostaglandin instillation	3	(0.0) [§]	8	(0.0) [§]	4	(0.0) [§]	5	(0.0) [§]	145	(0.5)	74	(0.8)	239	(0.0) [§]
Medical [¶]	4,777	(1.3)	65	(0.1)	18	(0.0) [§]	61	(0.2)	313	(1.2)	178	(1.9)	5,412	(0.9)
Other ^{**}	923	(0.3)	250	(0.2)	147	(0.2)	113	(0.3)	427	(1.5)	825	(8.7)	2,685	(0.4)
Total^{††}	354,423	(100.0)	123,537	(100.0)	62,147	(100.0)	38,208	(100.0)	27,105	(100.0)	9,420	(100.0)	614,840	(100.0)

* Data from 37 states and New York City; excludes two states where weeks of gestation or type of procedure was reported as unknown for >15% of women.

[†] Includes dilatation and evacuation.

[§] <0.05%.

[¶] Medical (nonsurgical) procedures differed by weeks of gestation (i.e., methotrexate and misoprostol or mifepristone and misoprostol were reported for abortions performed at ≤8 weeks' gestation; vaginal prostaglandins were primarily reported for abortions performed at later weeks of gestation).

^{**} Includes hysterotomy/hysterectomy and procedures reported as "other."

^{††} Percentages might not add to 100.0 because of rounding.

TABLE 19. Number of deaths and case-fatality rates* for abortion-related deaths reported to CDC, by type of abortion—United States, 1972–1998

Year	Type of abortion			Total	Case-fatality rate*
	Induced		Unknown [†]		
	Legal	Illegal			
1972	24	39	2	65	4.1
1973	25	19	3	47	4.1
1974	26	6	1	33	3.4
1975	29	4	1	34	3.4
1976	11	2	1	14	1.1
1977	17	4	0	21	1.6
1978	9	7	0	16	0.8
1979	22	0	0	22	1.8
1980	9	1	2	12	0.7
1981	8	1	0	9	0.6
1982	11	1	0	12	0.8
1983	11	1	0	12	0.9
1984	12	0	0	12	0.9
1985	11	1	1	13	0.8
1986	11	0	2	13	0.8
1987	7	2	0	9	0.5
1988	16	0	0	16	1.2
1989	12	1	0	13	0.9
1990	5	0	0	5	0.3
1991	11	1	0	12	0.8
1992	10	0	0	10	0.7
1993	6	1	2	9	0.5
1994	10	2	0	12	0.8
1995	4	0	0	4	0.3
1996	9	0	0	9	0.7
1997	7	0	0	7	0.6
1998	9	0	1	10	[§]
Total	342	93	16	451	1.1[¶]

* Legal induced abortion-related deaths per 100,000 reported legal induced abortions.

[†] Unknown whether induced or spontaneous abortions.

[§] The national case-fatality rate for 1998 cannot be calculated accurately because a substantial number of abortions occurred in the four nonreporting states; therefore, an appropriate total (US) denominator is unknown.

[¶] Case-fatality rate computed for 1972–1997 only.

All *MMWR* references are available on the Internet at <http://www.cdc.gov/mmwr>. Use the search function to find specific articles.

Use of trade names and commercial sources is for identification only and does not imply endorsement by the U.S. Department of Health and Human Services.

References to non-CDC sites on the Internet are provided as a service to *MMWR* readers and do not constitute or imply endorsement of these organizations or their programs by CDC or the U.S. Department of Health and Human Services. CDC is not responsible for the content of these sites. URL addresses listed in *MMWR* were current as of the date of publication.

The *Morbidity and Mortality Weekly Report (MMWR)* series is prepared by the Centers for Disease Control and Prevention (CDC) and is available free of charge in electronic format and on a paid subscription basis for paper copy. To receive an electronic copy each week, send an e-mail message to listserv@listserv.cdc.gov. The body content should read *SUBscribe mmwr-toc*. Electronic copy also is available from CDC's Internet server at <http://www.cdc.gov/mmwr> or from CDC's file transfer protocol server at <ftp://ftp.cdc.gov/pub/publications/mmwr>. To subscribe for paper copy, contact Superintendent of Documents, U.S. Government Printing Office, Washington, DC 20402; telephone 202-512-1800.

Data in the weekly *MMWR* are provisional, based on weekly reports to CDC by state health departments. The reporting week concludes at close of business on Friday; compiled data on a national basis are officially released to the public on the following Friday. Address inquiries about the *MMWR* series, including material to be considered for publication, to Editor, *MMWR* Series, Mailstop C-08, CDC, 1600 Clifton Rd., N.E., Atlanta, GA 30333; telephone 888-232-3228.

All material in the *MMWR* series is in the public domain and may be used and reprinted without permission; however, citation of the source is appreciated.