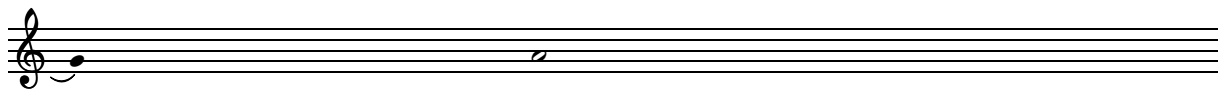


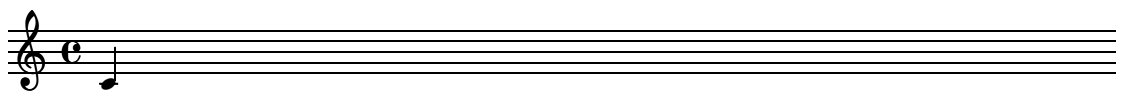
`'gregorian-transcription.ly':`

Modern transcriptions of gregorian music. Gregorian music has no measure, no stems, only uses half and quarter notes, and two types of barlines, a short one indicating a rest, a second indicating a breath mark.



`'header.ly':`

The standard header that ought to be above a file.



`'jazz-combo.ly':`

Jazz tune for combo (horns, piano, drums, bass, guitar).

'melody-chords.ly':

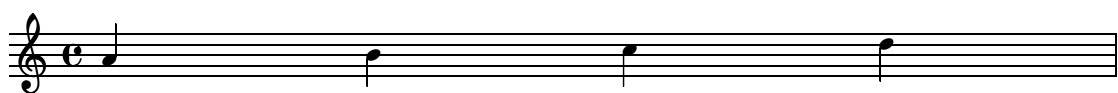
Lead sheet format: chords with melody.

'melody-lyrics-chords.ly':

Popsong format: chords, melody and lyrics.

'melody-lyrics.ly':

Melody and lyrics.



Aaa

Bee

Cee

Dee

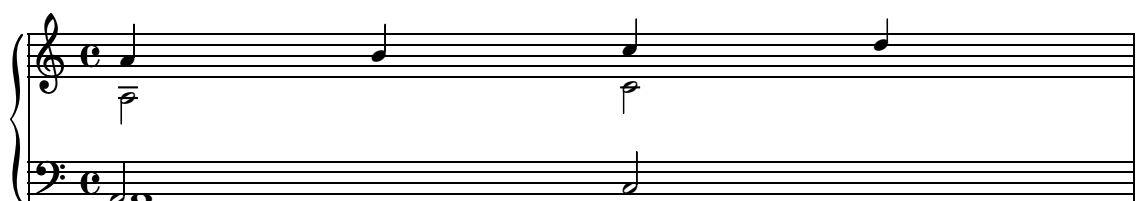
`'melody.ly':`

Only a melody.



`'piano-4-voices.ly':`

Polyphonic piano music



`'piano-dynamics.ly':`

Template that puts dynamics on a separate line, so it is neatly centered between staves.

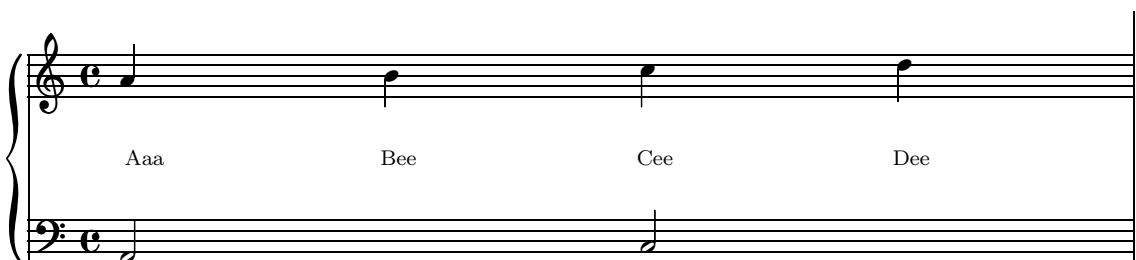


ℳ.

✱

`'piano-lyrics.ly':`

Lyrics between two staves.



`'piano-melody-lyrics.ly':`

Classical song format: one staff with melody and lyrics, and piano accompaniment.

A musical score for a piano piece. It consists of two staves: a single treble clef staff at the top and a grand staff (treble and bass clefs) at the bottom. The key signature is one flat (B-flat) and the time signature is common time (C). The melody is composed of four quarter notes: A3, B3, C4, and D4. The lyrics 'Aaa', 'Bee', 'Cee', and 'Dee' are written below the top staff, aligned with the notes. The piano accompaniment in the grand staff consists of a single quarter note A2 in the bass staff, with the treble staff being empty.

‘piano.ly’:

Simple piano music.

An empty musical score for a piano piece, identical in structure to the first score. It features a single treble clef staff and a grand staff (treble and bass clefs) in one flat, common time. No notes or lyrics are present.

‘satb.ly’:

Example template for a SATB vocal score.

A musical score template for a SATB vocal score. It features a single treble clef staff and a grand staff (treble and bass clefs) in one flat, common time. The melody in the top staff consists of four quarter notes: A3, B3, C4, and D4. The lyrics 'hi', 'hi', 'hi', and 'hi' are written above the top staff, aligned with the notes. The piano accompaniment in the grand staff consists of a single quarter note A2 in the bass staff, with the treble staff being empty. The lyrics 'ha', 'ha', 'ha', and 'ha' are written below the top staff, and 'hu', 'hu', 'hu', and 'hu' are written below the bass staff, all aligned with the notes.